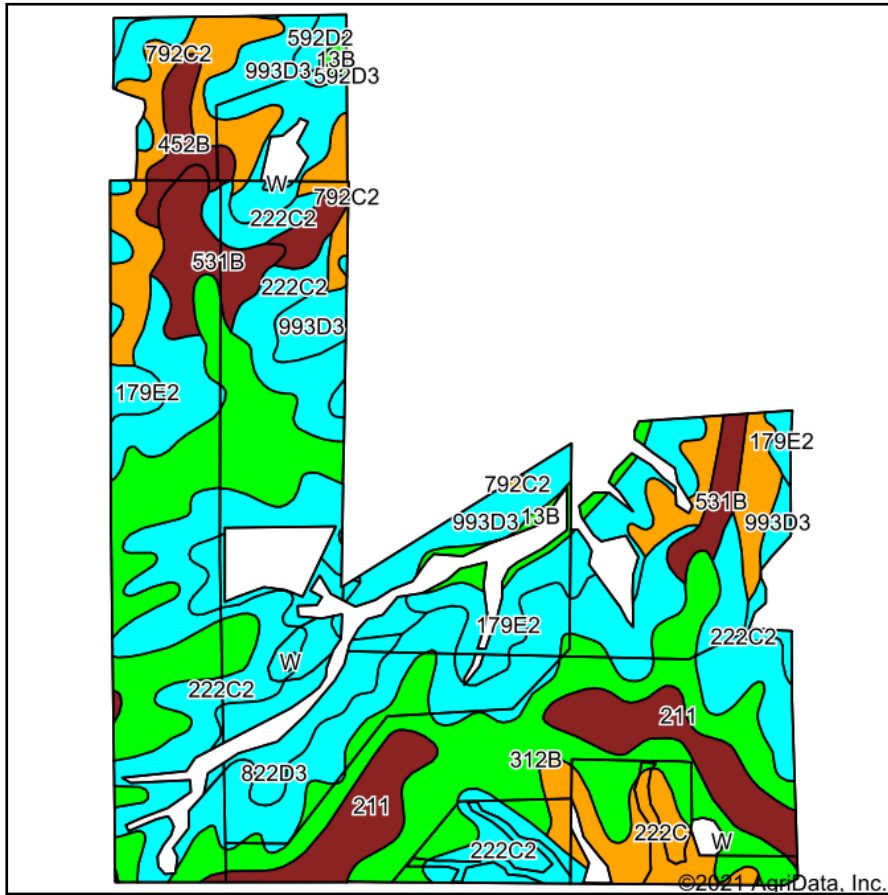
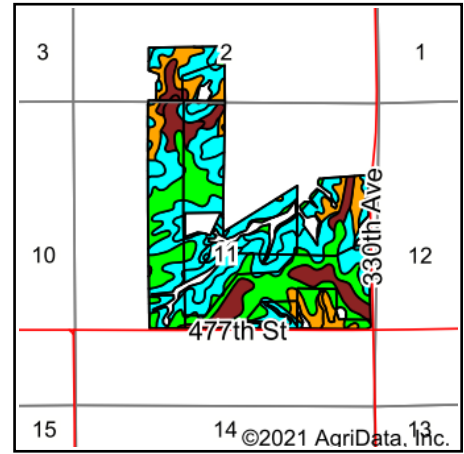


# Soils Map



Soils data provided by USDA and NRCS.



State: **Iowa**  
 County: **Appanoose**  
 Location: **11-69N-16W**  
 Township: **Udell**  
 Acres: **255.92**  
 Date: **8/19/2021**

**Hawkeye Farm Mgmt & Real Estate**

United Country Real Estate  
 22 N Main, Albion IA Phone: 641-932-7796  
 Email: hawkeye@uciowa.com  
 On the web: www.uciowa.com  
 www.iowawhitehallfarms.com

Maps Provided By:

**surety**  
 CUSTOMIZED ONLINE MAPPING  
 © AgriData, Inc. 2021 www.AgriDataInc.com



Area Symbol: IA007, Soil Area Version: 27

Code	Soil Description	Acres	Percent of field	CSR2 Legend	Non-Irr Class *c	CSR2**	CSR	*n NCCPI Soybeans
222C2	Clarinda silty clay loam, 5 to 9 percent slopes, moderately eroded	73.41	28.7%		IVw	28	25	43
312B	Seymour silt loam, 2 to 5 percent slopes	65.14	25.5%		IIIe	64	60	66
792C2	Armstrong loam, 5 to 9 percent slopes, moderately eroded	21.48	8.4%		IIIe	31	26	48
993D3	Armstrong-Gara complex, 9 to 14 percent slopes, severely eroded	21.37	8.4%		VIe	19	15	40
211	Edina silt loam, 0 to 1 percent slopes	16.67	6.5%		IIIw	59	60	66
179E2	Gara loam, 14 to 18 percent slopes, moderately eroded	16.31	6.4%		VIe	24	33	45
822D3	Lamoni soils, 9 to 14 percent slopes, severely eroded	10.88	4.3%		VIe	5	5	34
531B	Kniffin silt loam, 2 to 5 percent slopes	10.54	4.1%		IIIe	55	58	67
222C	Clarinda silty clay loam, 5 to 9 percent slopes	8.80	3.4%		IVw	31	30	47
452B	Lineville silt loam, 2 to 5 percent slopes	6.26	2.4%		IIIe	53	50	62
13B	Olmitz-Vesser-Colo complex, 2 to 5 percent slopes	2.95	1.2%		IIw	79	68	80
592D2	Mystic silt loam, 9 to 14 percent slopes, moderately eroded	1.85	0.7%		IVe	10	5	51
W	Water	0.26	0.1%			0	0	
Weighted Average						39.7	37.6	*n 52.3

\*\*IA has updated the CSR values for each county to CSR2.

\*n: The aggregation method is "Weighted Average using all components"

\*c: Using Capabilities Class Dominant Condition Aggregation Method

Soils data provided by USDA and NRCS.