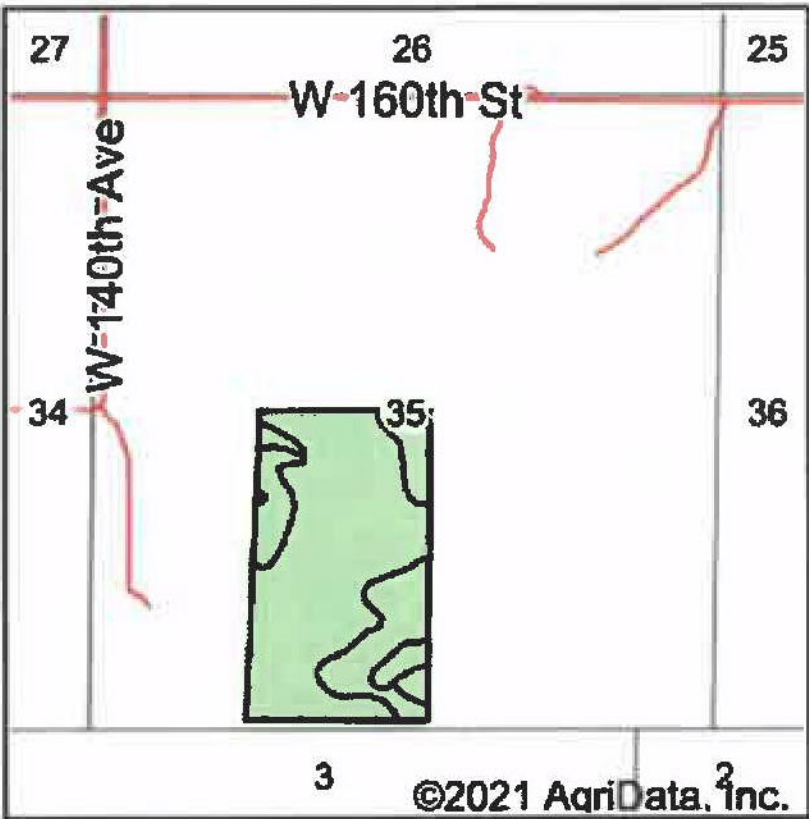
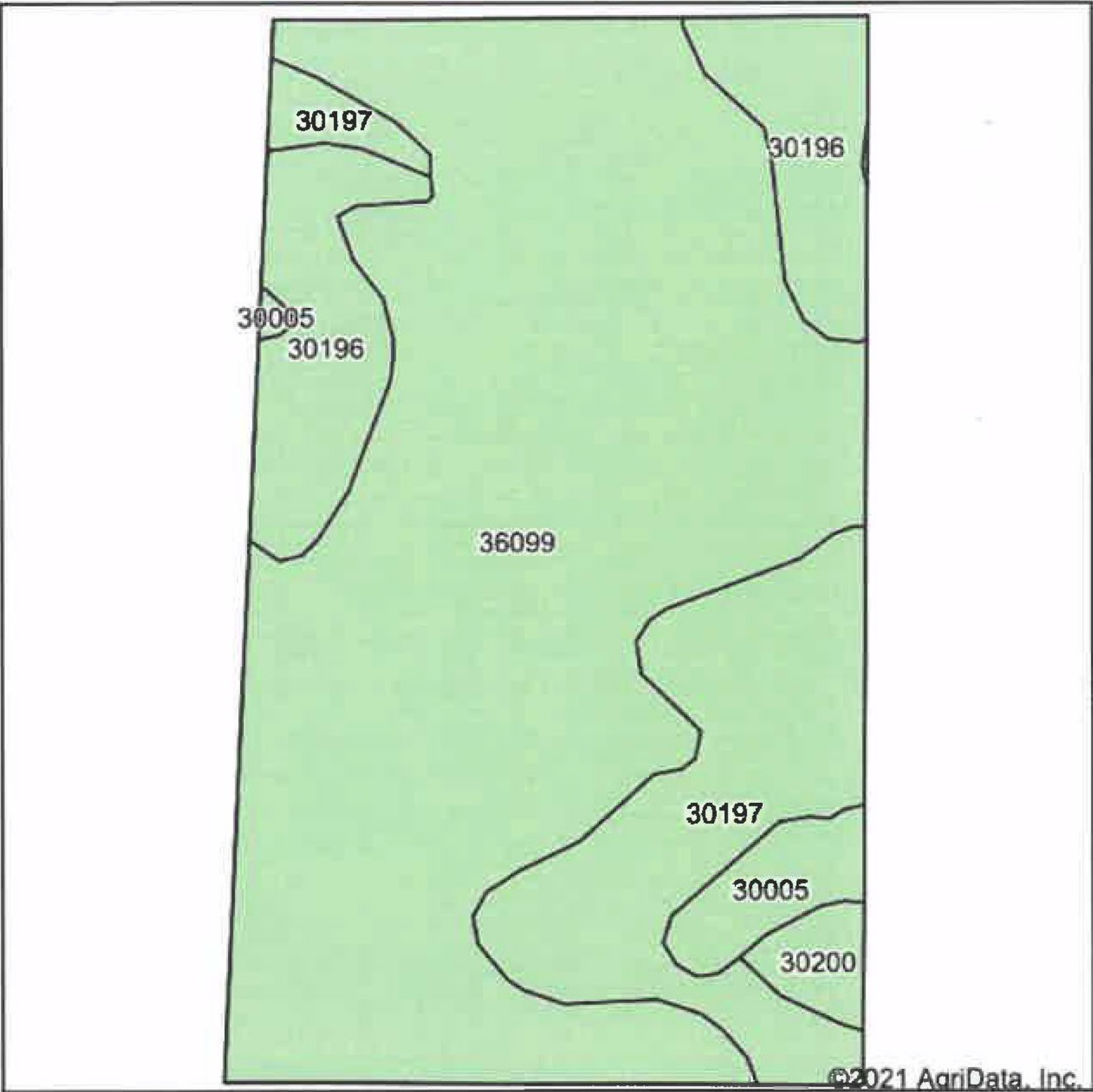


Soils Map



State: **Missouri**
County: **Harrison**
Location: **35-66N-29W**
Township: **Lincoln**
Acres: **90.27**
Date: **8/24/2021**



Soils data provided by USDA and NRCS.

Area Symbol: MO081, Soil Area Version: 24										
Code	Soil Description	Acres	Percent of field	Non-Irr Class *c	Alfalfa hay	Caucasian bluestem	Common bermudagrass	Orchardgrass red clover	Tall fescue	Warm season grasses
36099	Zook-Colo silty clay loams, 1 to 3 percent slopes, frequently flooded	60.59	67.1%	IIIw			8	7	8	9
30197	Shelby loam, 14 to 18 percent slopes	14.75	16.3%	IVe						
30196	Shelby clay loam, 9 to 14 percent slopes, severely eroded	10.88	12.1%	IVe						
30005	Adair loam, 3 to 9 percent slopes	2.64	2.9%	IIIe	5	8	7	8	7	8
30200	Shelby loam, 9 to 14 percent slopes	1.41	1.6%	IIIe						
Weighted Average					0.1	0.2	5.6	4.9	5.6	6.3

*c: Using Capabilities Class Dominant Condition Aggregation Method