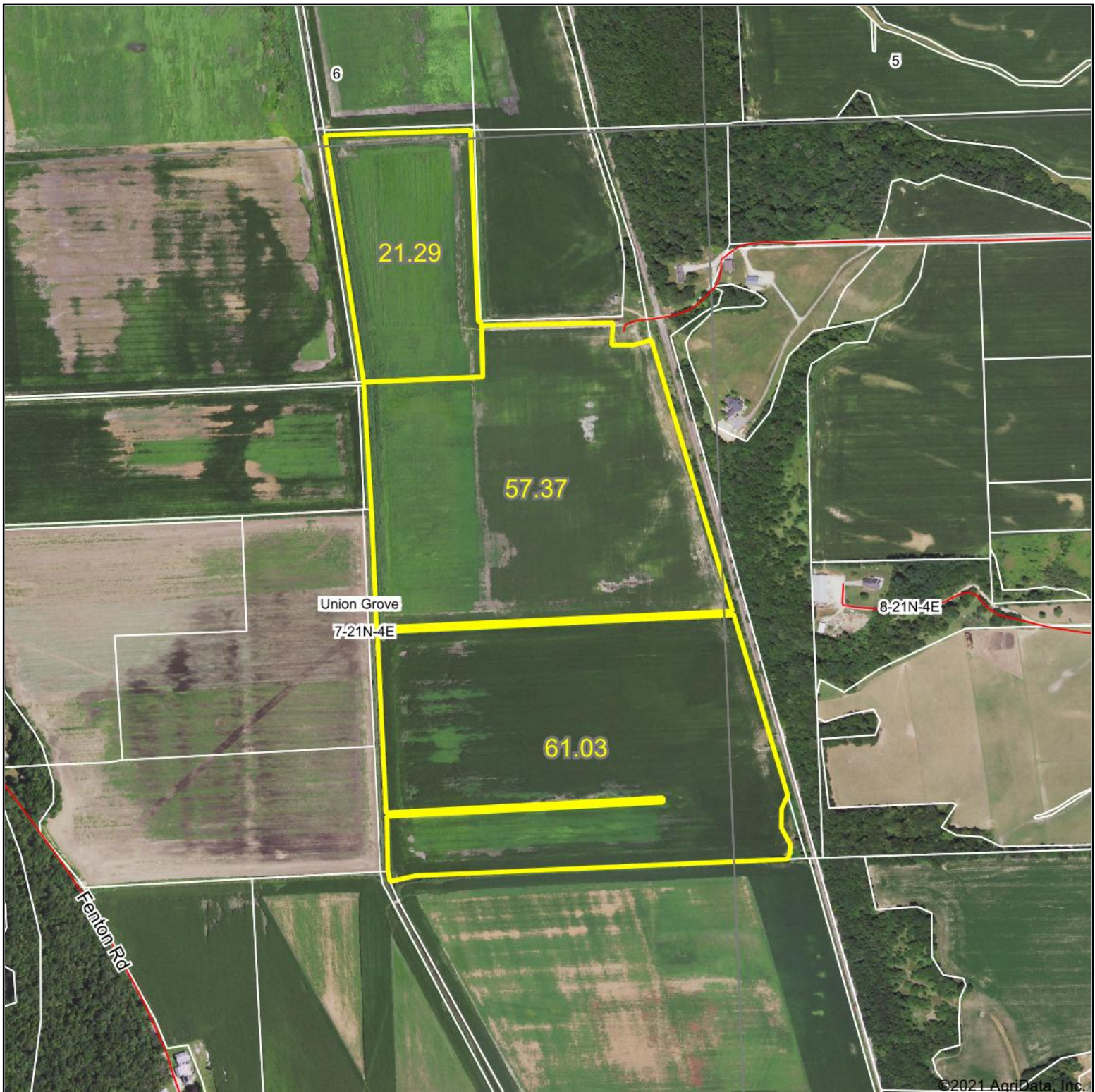


Aerial Map - Tillable Acres



Map Center: 41° 49' 24.91, -90° 4' 42.64

0ft 830ft 1660ft

7-21N-4E
Whiteside County
Illinois



Maps Provided By:
 **surety**
CUSTOMIZED ONLINE MAPPING
© AgriData, Inc. 2021 www.AgriDataInc.com

Field borders provided by Farm Service Agency as of 5/21/2008.