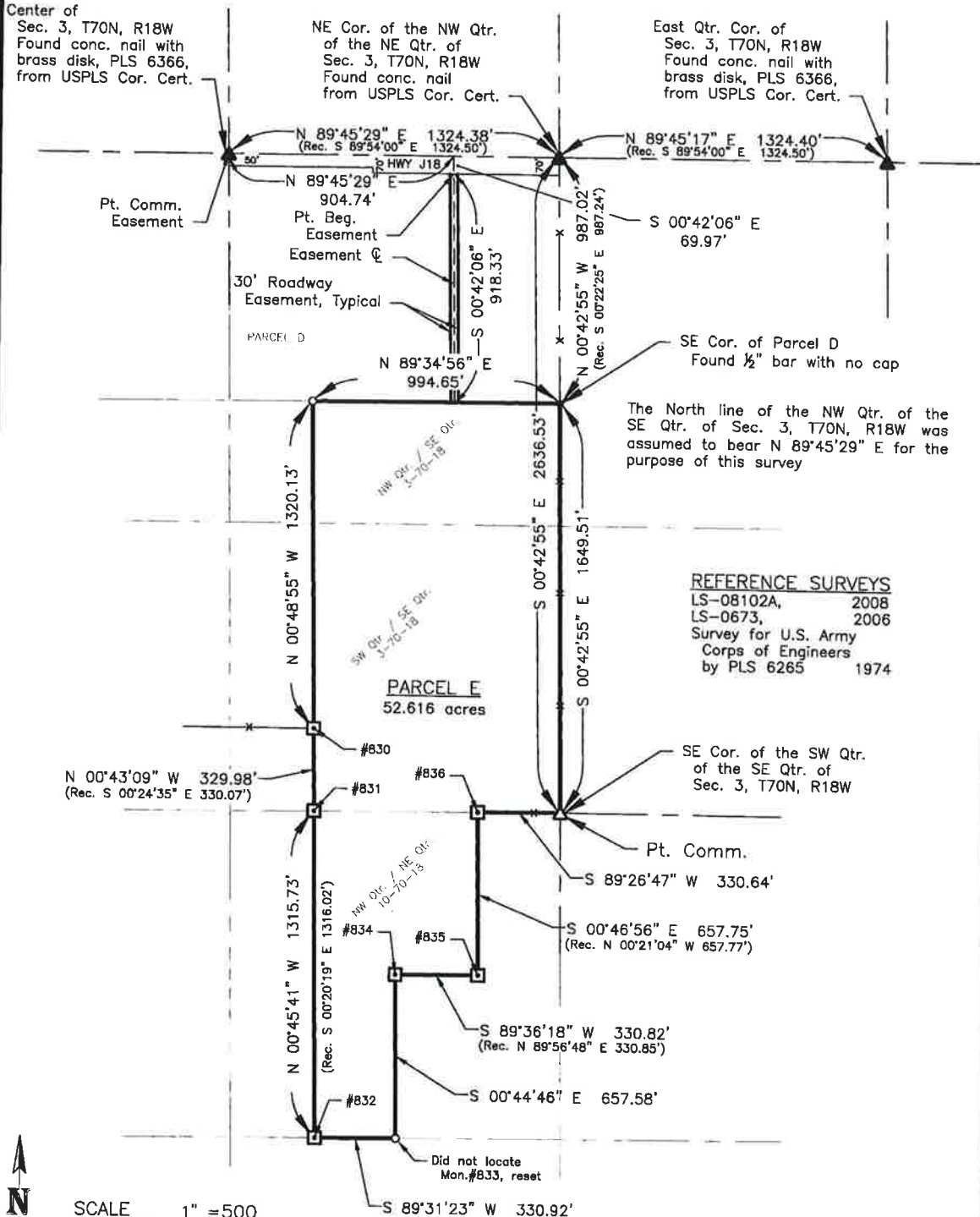


MONUMENTATION LEGEND

- ▲ - Found Monument as noted at United States Public Land Survey Corner
- △ - Set 1/2" bar with yellow surveyor's cap at United States Public Land Survey Corner
- - Found Monument as noted
- - Set 1/2" bar with yellow surveyor's cap at corner, PLS 6366
- - Found United States Army Corps of Engineers Concrete Monument, numbered as noted



APPROXIMATE ACREAGE WITHIN EACH 40 ACRE ALIQUOTE PART

11.262 acres in the NW Qtr. of the SE Qtr. of Sec. 3, T70N, R18W
 26.363 acres in the SW Qtr. of the SE Qtr. of Sec. 3, T70N, R18W
 14.991 acres in the NW Qtr. of the NE Qtr. of Sec. 10, T70N, R18W

B&T Book 211-X, Pg. 67

PLAT OF SURVEY

B & T ENGINEERING SERVICES, INC.

Owner
IA DEVELOPMENT LLC

Page
3 of 3

Date
11/18/13

Location Appanoose County, Iowa
West One-half of the SE Qtr. of Sec. 3, T70N, R18W and the NW Qtr. of the NE Qtr. of Sec. 10, T70N, R18W
Drawn By K. McDonald
Drawing No. LS-1381

Survey Notes

HWY J18 was derived using fieldwork and prior surveys of record.

REFERENCE SURVEYS

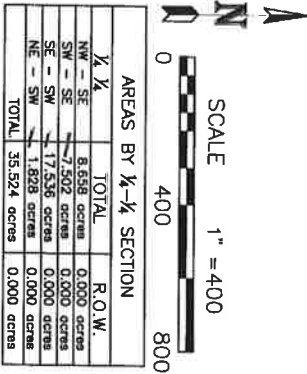
Survey for IA Development LLC, by PLS 6366, 2016
Survey for IA Development LLC, by PLS 6366, 2014
Survey for IA Development LLC, by PLS 6366, 2013

The North line of the Northwest Quarter of the Southeast Quarter of Sec. 3, T70N, R18W was assumed to bear S 89°45'18" W for the purpose of this survey.

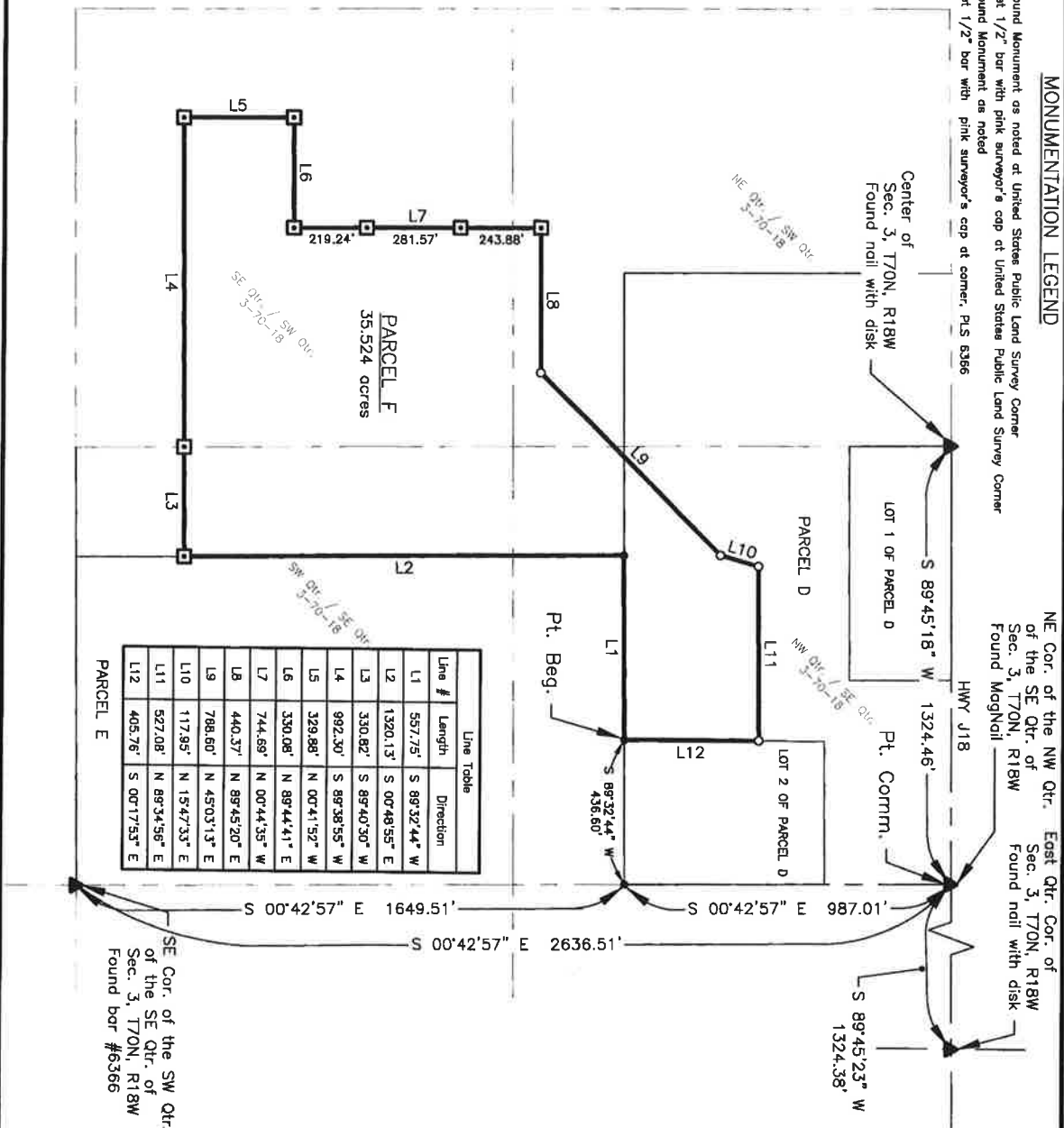
Found USACE concrete monument

MONUMENTATION LEGEND

- ▲ - Found Monument as noted at United States Public Land Survey Corner
- - Set 1/2" bar with pink surveyor's cap at United States Public Land Survey Corner
- - Found Monument as noted
- - Set 1/2" bar with pink surveyor's cap at corner, PLS 6366



AREAS BY 1/4-1/4 SECTION		
1/4	TOTAL	R.O.W.
NW - SE	8.658 acres	0.000 acres
SW - SE	17.502 acres	0.000 acres
SE - SW	17.536 acres	0.000 acres
NE - SW	1.828 acres	0.000 acres
TOTAL	35.524 acres	0.000 acres



PLAT OF SURVEY

Location Appanoose County, Iowa
South One-half of Sec. 3, T70N, R18W

Drawn By
K. McDonald

B & T ENGINEERING SERVICES, INC.

Scale
1" = 400'

Owner
IA DEVELOPMENT LLC

Page
2 of 2

Date
10/10/16

Project No.
LS-1669