

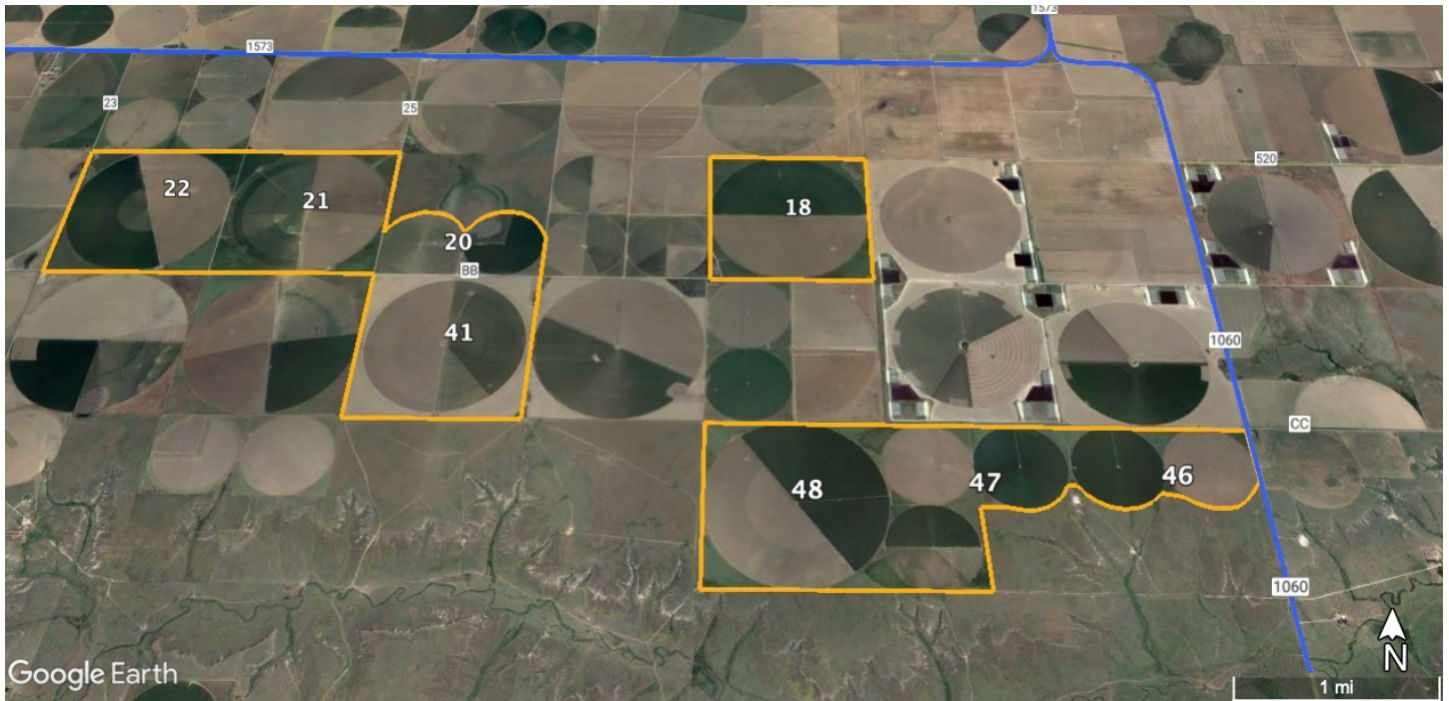


Shawn Gillispie, Broker PH:
806-922-5532
Marty Nicholson, Agent PH:
806-330-0057

FOR SALE

**Corn Growers
Championship Irrigated
Farm**

\$22,000,00,000



3D interactive Map

Corn Growers Championship Irrigated Farm

Area: Northeast of Sunray, TX in Sherman Co. South of FM 1573

Location: From the intersection of FM 1573 and FM 119, drive east 3 miles to Co Rd 23 turning right and driving south 1 mile to the NW corner of the NW section of the farm.

Sections: 6.75 sections

Total Acres: Approximately 4,267 acres

Total Wet Acres: Approximately 3,240 acres

CRP Acres: A portion of the corners are enrolled in the CRP program.

Crop History: Seed maize, corn, cotton, wheat

Total Irrigation Wells: 32

1/2 mile Sprinklers: 5

¼ mile Sprinklers: 7

Booster Pumps: 4

National Corn Growers Winner:

1st in the State of Texas

Years- 2020, 2019, 2018, 2016, 2009, 2007, 2004

2nd in the State of Texas

Years- 2017, 2013, 2010, 2008, 2007, 2003, 2002

2nd and 3rd National Winner

Years- 2018, 2010, 2007

Improvements:

Sections 18 – 639.6 acres

Sprinklers- 1 – Zimmatic ½ mile sprinkler

Nozzle Package- 1,723 gpm

Irrigation Wells- 6 wells equipped with 5 Turbine pumps and 1 submersible pump.

Motors- 1 Cummins 855, 4 Chevy engines, 1 Chevy Gen – Set, 1 – Chevy booster pump at the pivot.

S ½ of Section 20 - 293 acres

Sprinklers- 2 – Zimmatic ¼ mile sprinklers

Nozzle Package

Irrigation Wells- 2 wells equipped with 2 Turbine pumps

Motors- 2 Chevy engines

Section 21 - 640.7 acres

Sprinklers- 1 – Reinke ½ mile sprinkler

Nozzle Package- 1,500 gpm

Irrigation Wells- 5 wells equipped with 5 Turbine pumps

Motors- 1 - 3306 CAT engine, 4 Chevy engines, 1 – Chevy booster pump at pivot

Section 22 - 640 acres

Sprinklers- 1 – Zimmatic ½ mile sprinkler

Nozzle Package- 1,970 gpm

Irrigation Wells- 4 wells equipped with 3 Turbine pumps and 1 submersible pump.

Motors- 2 Cummins 855 engines, 1 – 150 hp electric motor VFD, 1 submersible pump with VFD

Section 41 639.9 acres

Sprinklers- 1 – Reinke ½ mile sprinkler

Nozzle Package- 1,790 gpm

Irrigation Wells- 3 wells equipped with 3 Turbine pumps

Motors- 1 3406 CAT engine, 2 Chevy engines, 1- Chevy booster pump at pivot N ½

Section 46 - 290.83 acres

Sprinklers- 2 – ¼ mile sprinklers. 1 – Reinke, 1 - Pierce

Nozzle Package- 700 gpm, sprinklers alternate

Irrigation Wells- 4 wells equipped with 4 Turbine pumps, 2 of the 4 wells are located in the grass in the south ½ of Section 46. Easement provided.

Motors- 2 - Chevy engines, 2 – electric motors

N ½ and SW ¼ of Section 47 - 482.88 acres

Sprinklers- 3 – ¼ mile sprinklers. SW ¼ - Zimmatic; NW ¼ Reinke, NE ¼ Zimmatic

Nozzle Package- NW & SW sprinklers alternate at 998 gpm; NE nozzled for 845 gpm

Irrigation Wells- 2 wells equipped with 2 Turbine pumps; 1 well on Section 48 pumps to Section 47 for a total of 3 wells. The NW ¼ of Section 47 has an electric Booster pump with VFD.

Motors- 2 Chevy engines on Section 47, 1 Chevy engine on Section 48 that pumps to Section 47.

Section 48 – 639.7 acres

Sprinklers- 1 – Zimmatic ½ mile sprinkler

Nozzle Package- 1,920 gpm

Irrigation Wells- 6 wells equipped with 5 Turbine pumps and 1 submersible pump. 1 of the 6 irrigation wells is in the grass on Section 74. Easement provided. A second well on Section 73 is pumped to Section 48. This well is surveyed in with Section 48.

Motors- 5 Chevy engines, 1 Chevy gen-set for the submersible Well and 1 Chevy booster pump at the pivot.

Irrigation Wells**Section 18-**

SH- 0942 Drilled - 09/29/1966; Depth – 467'

SH – 4895 Drilled - 02/17/2012, Depth – 495'

SH – 4894 Drilled - 02/21/2012, Depth – 538'

SH – 1099 Drilled - 02/06/1968, Depth – 467'

SH – 0988 Drilled - 03/10/1967, Depth – 515'

SH – 0943 Drilled - 10/03/1966, Depth – 700'

SH – 0942 Drilled - 09/26/1966, Depth – 467'

S ½ of Section 20

SH – 2347 Drilled - 03/07/2008, Depth – 560'

SH – 2346 Drilled - 03/06/2008, Depth – 580'

Section 21

SH – 11078 Drilled - 04/17/2019, Depth – 512

SH – 1986 Drilled - No information

SH – 0675 Drilled - 07/24/1964, Depth – 494'

SH – 0943 Drilled - 03/01/1963, Depth – 700'

Section 22

SH – 4893 Drilled - 02/24/2012, Depth – 748'

SH – 4945 Drilled - 03/05/2012, Depth – 577'

SH – 2185 Drilled - 03/27/2004, Depth – 522'

SH – 1757 Drilled - 05/02/1989, Depth – 530'

Section 41

SH – 11088 Drilled - 04/19/2019, Depth – 531'

SH – 1700 Drilled - 05/29/1981, Depth – 495'

SH – 0675 Drilled - 07/24/1964, Depth – 494'

N ½ of Section 46

SH – 3850 Drilled - 12/23/2010, Depth – 461'

SH – 3851 Drilled - 12/22/2010, Depth – 462'

SH – 2261 Drilled - No information

SH – 1479 Drilled - 05/28/1974, Depth – 529'

N ½ and SW ¼ of Section 47

SH – 7985 Drilled - 04/20/2014, Depth – 494’

SH – 1130 Drilled - 03/08/1968, Depth – 494’

From Section 48: **SH – 2142** Drilled - 06/21/2002, Depth – 479’

Section 48

SH – 8022 Drilled - No information

SH – 8023 Drilled - No information

SH – 7985 Drilled - No information

SH – 1861 Drilled - 07/24/1995, Depth – 545’

SH – 0810 Drilled - 06/01/1965, Depth – 487’

SH – 0812 Drilled - 04/09/1965, Depth – 450’