 Boundary



# Sandy Fork Ranch

Gonzales County, Texas, 277 AC +/-



Boundary

John Lynd

P: 8304466145

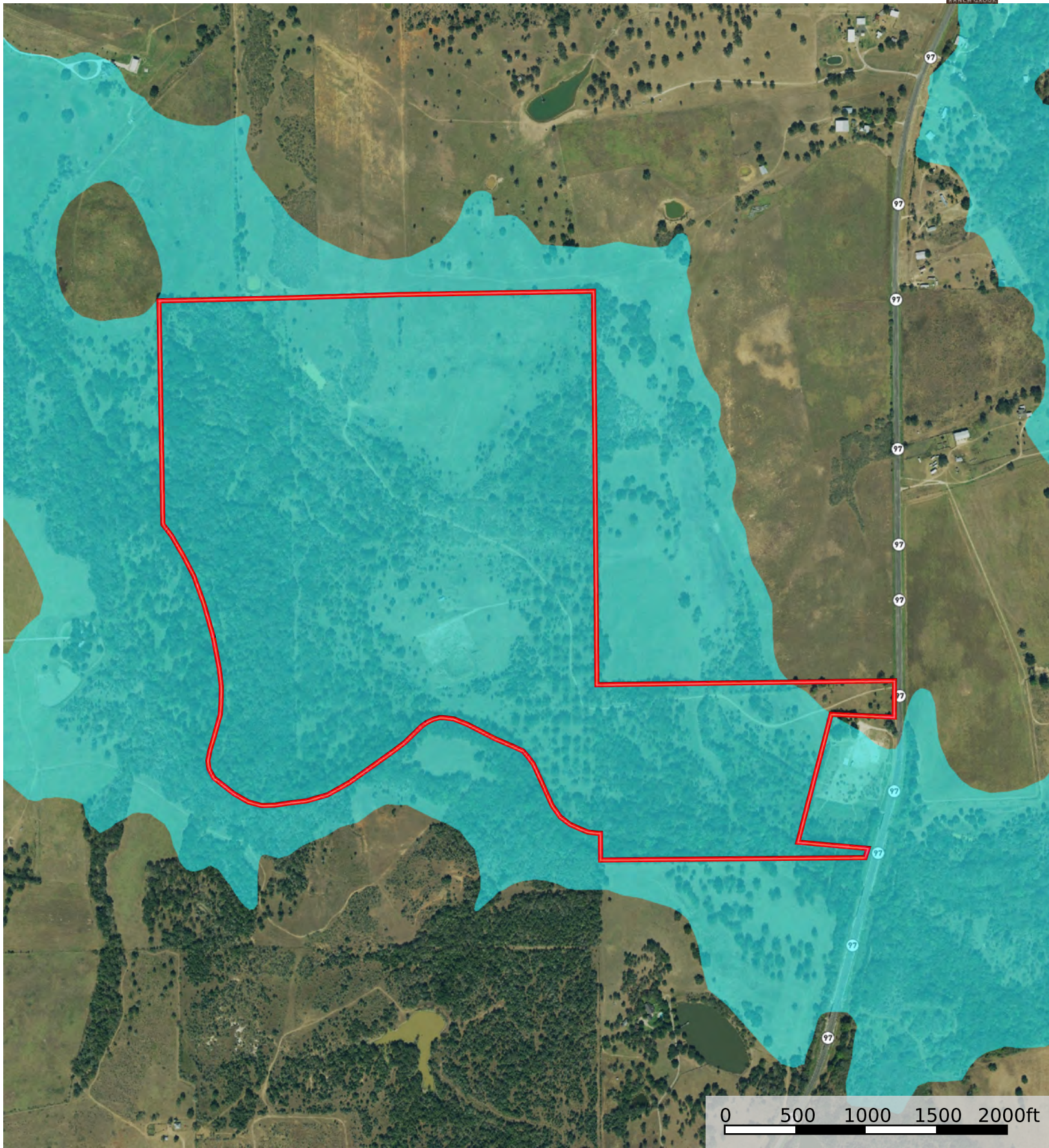
[john@bluestembranchgroup.com](mailto:john@bluestembranchgroup.com)

32041 Oak Ridge Parkway

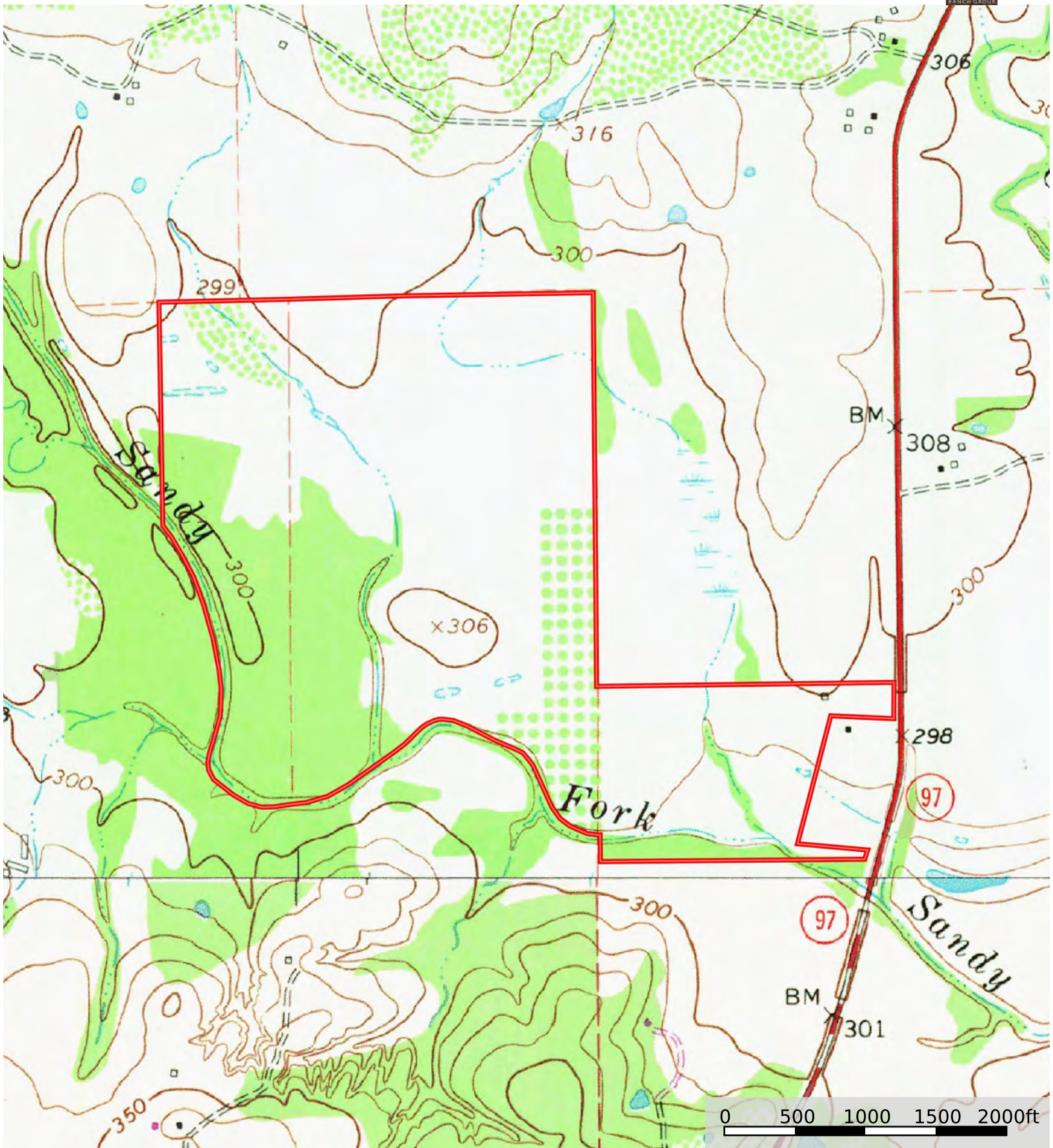


The information contained herein was obtained from sources deemed to be reliable. MapRight Services makes no warranties or guarantees as to the completeness or accuracy thereof.



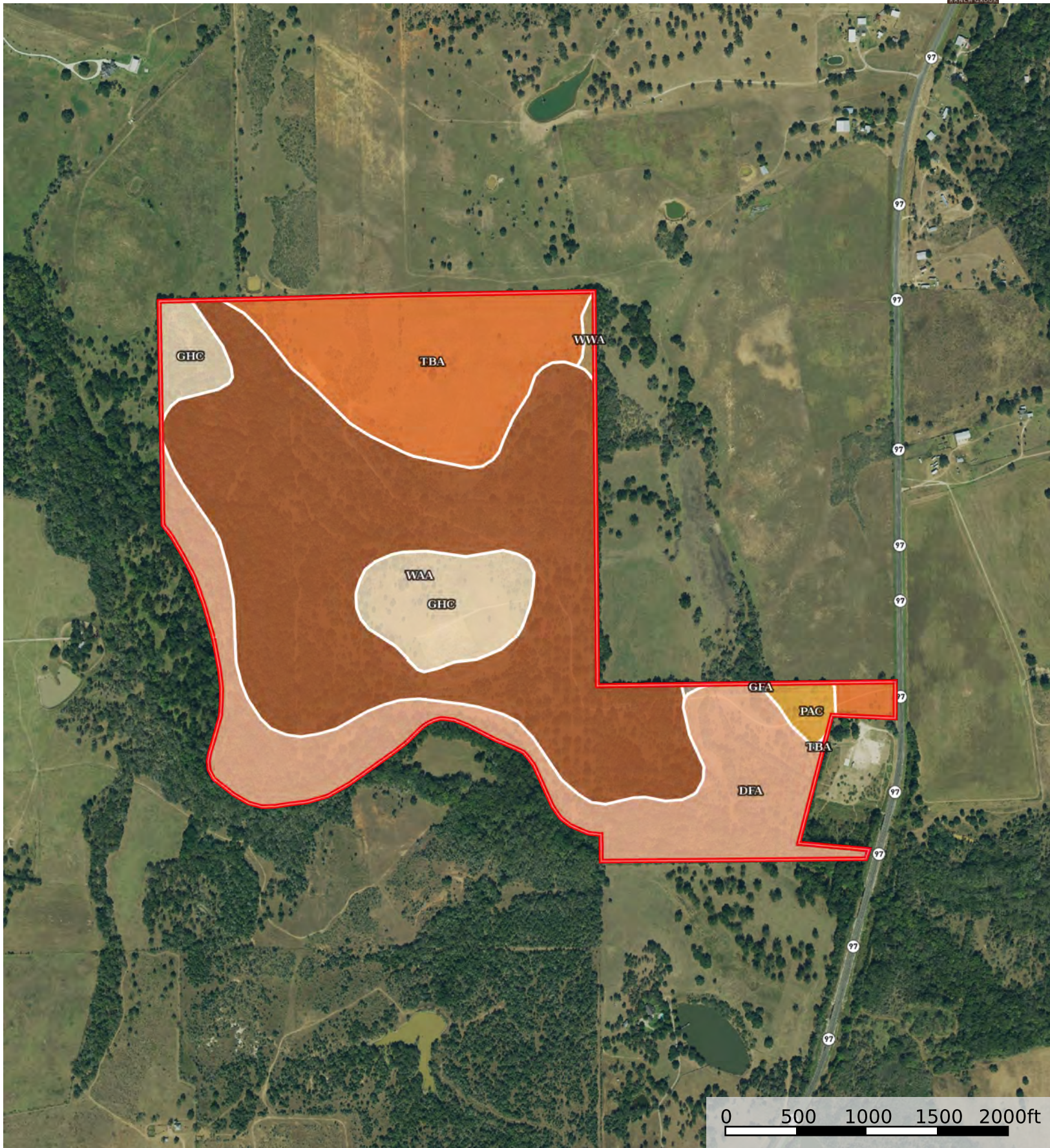







Boundary





 Boundary



Boundary 274.46 ac

SOIL CODE	SOIL DESCRIPTION	ACRES	%	NCCPI	CAP
WaA	Waelder loam, 0 to 1 percent slopes, occasionally flooded	137.52	50.1	46	2w
DfA	Degola clay loam, 0 to 1 percent slopes, frequently flooded	59.04	21.51	47	5w
TbA	Tabor fine sandy loam, 0 to 1 percent slopes	47.86	17.44	39	3s
GhC	Gholson loamy fine sand, 1 to 5 percent slopes	25.41	9.26	47	3e
PaC	Padina loamy fine sand, 1 to 5 percent slopes	3.35	1.22	39	4e
WwA	Wilson clay loam, 0 to 1 percent slopes	1.01	0.37	37	3w
GfA	Ganado clay, 0 to 1 percent slopes, frequently flooded	0.27	0.1	38	5w
TOTALS		274.47(*)	100%	44.96	2.94

(\*) Total acres may differ in the second decimal compared to the sum of each acreage soil. This is due to a round error because we only show the acres of each soil with two decimal.

