

NOT SUBDIVIDED

NOT SUBDIVIDED

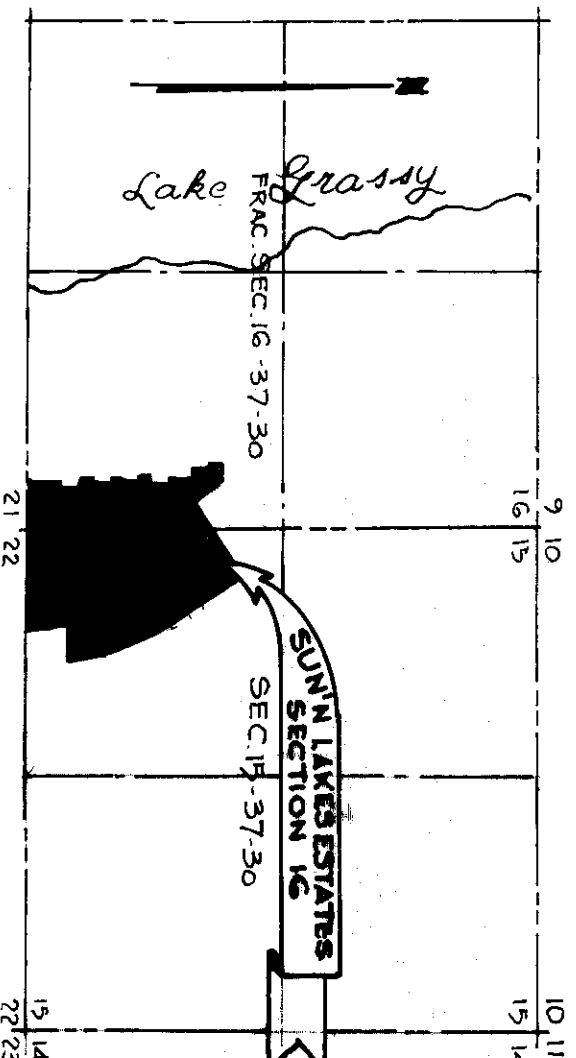
SUN'N LAKES ESTATES

SECTION 16
A SUBDIVISION IN SECTIONS 15 AND 16, TWP. 37N., RGE. 30E.,
HIGHLANDS COUNTY, FLORIDA

M. B. GARRIS
MIAMI, FLORIDA
CIVIL & CONSULTING ENGINEER
OCTOBER, 1966

SCALE:
1"=100'

Note: There is a 75' easement along the rear of every lot shown on this plat.
from October's Permanent Reference Monument set.
Bearings refer to an assumed meridian.



LOCATION MAP
SCALE 1"=1000'



