

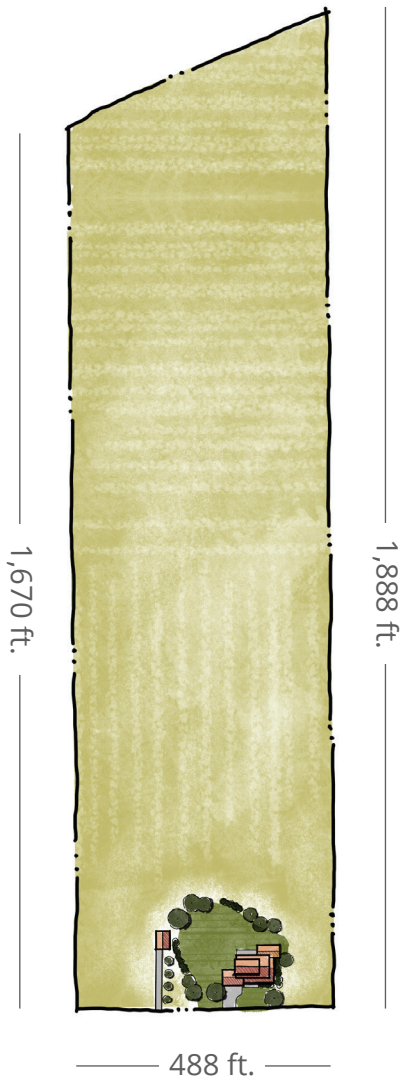
# PETERSEN ESTATES

## LOT 2

*20 Acres in Fielding, Utah*

*Agriculture – Wheat & Corn*

*Offered at \$375,000*



**LANCE MAY**

(801) 201-5200

Lance@Tridestin.com

www.Tridestin.com

EXCLUSIVELY MARKETING BY

  
**TRIDESTIN**  
GROUP

**BERKSHIRE**  
**HATHAWAY**  
HomeServices  
Utah Properties

  
**ROCKY MOUNTAIN**  
HORSE PROPERTY



# PETERSEN ESTATES

## LOT 2

*20 Acres in Fielding, Utah*  
*Agriculture – Wheat & Corn*  
*Offered at \$375,000*



### *Irrigation Water*

Includes 18 Shares of  
Bear River Canal Company for  
Flood Irrigation

### *Culinary Water*

Utah State Well  
Permit #13-4051 is  
Pending Approval (1.73 AC-FT)  
Submitted 3.24.2021

### *Septic Perc Test*

Completed with Bear River  
Health Department

### *Power*

New Power Lines Installed  
Above Ground Along the  
Frontage of the Lot.  
Connection with the Power  
Company will be Required.



©2021 BHH Affiliates, LLC. An independently owned and operated franchisee of BHH Affiliates, LLC. Berkshire Hathaway HomeServices and the Berkshire Hathaway HomeServices symbol are registered service marks of Columbia Insurance Company, a Berkshire Hathaway affiliate. Equal Housing Opportunity. Information not verified or guaranteed.

**LANCE MAY**

(801) 201-5200

Lance@Tridestin.com

www.Tridestin.com

EXCLUSIVELY MARKETING BY



**BERKSHIRE  
HATHAWAY**  
HomeServices  
Utah Properties

