

FOR SALE

26.787 Acres MOL

Farm & Ranch, Residential, Commercial
Waco MSA, Falls County, TX

\$169,500

For a virtual tour and investment offering go to: www.texasfarmandranchrealty.com



— "Stewards of Land" —
A DBA of Dube's Commercial, Inc. TREC# 484723

Bob Dube (Broker)

512-423-6670 (mobile) 254-803-5263 (LAND)

bob@texasfarmandranchrealty.com

www.texasfarmandranchrealty.com

**FOR
SALE**

26.787 Acres MOL

Multi-Use: Residential & Pasture Use

Marlin, Falls County, TX 76661

Property Highlights

Location – 26.787 Acres MOL located at 2893 Hwy 6, Marlin, Texas 76661. Traveling south on Hwy 6 past Marlin, from Hwy 7 go .5 miles. Turn right at the sign for the Texas Dept of Criminal Justice and go .2 miles. The property is located on the right. Located just 35 minutes from Waco, approximately 1.5 hours from Fort Worth, 1 hour 30 minutes from Austin and 2 hours 15 minutes from Houston.

Acres – 26.787 Acres MOL according to survey provided by Toby Tibbit dated 6/25/21.

Features – Approximately half the property is heavily wooded with the rest being covered in native grasses. The land is well located for multiple uses ie: farm & ranch with a house, recreational or commercial development.

Water – City of Marlin services the area there not an existing meter on the property.

Electricity – There is not currently a meter on the property. Oncore services the area.

Soil – There are various soil types that make up the property. Please refer to the USDA Soil Map located in this brochure for the highest and best use of the soil.

Minerals – Seller retains all owned minerals.

Topography – The land is flat.

Easements – An abstract of title will need to be performed to determine easements that may exist.

Property Condition – Seller nor Seller's Broker does not represent or warrant expressed or implied the property is suitable for Buyer's intended, current or future use and is taking the Property "as is", "where is"

Restrictions – See below in this brochure.

Showings - By appointment only. Buyers who are represented by an agent/broker shall have their agent/broker actively involved and present at all showings.

Presented At - \$169,500 or \$6,332 per acre

Texas Farm and Ranch Realty dba Dube's Commercial, Inc., does not make any representations or warranties expressed or implied as to the accuracy of this information. All sources are deemed reliable.



Bob Dube (Broker)

512-423-6670 (mobile) 254-803-5263 (LAND)

bob@texasfarmandranchrealty.com

www.texasfarmandranchrealty.com

**FOR
SALE**

26.787 Acres MOL

Multi-Use: Residential & Pasture Use

Marlin, Falls County, TX 76661

Property Pictures



Bob Dube (Broker)

512-423-6670 (mobile) 254-803-5263 (LAND)

bob@texasfarmandranchrealty.com

www.texasfarmandranchrealty.com

A DBA of Dube's Commercial, Inc. TREC# 484723

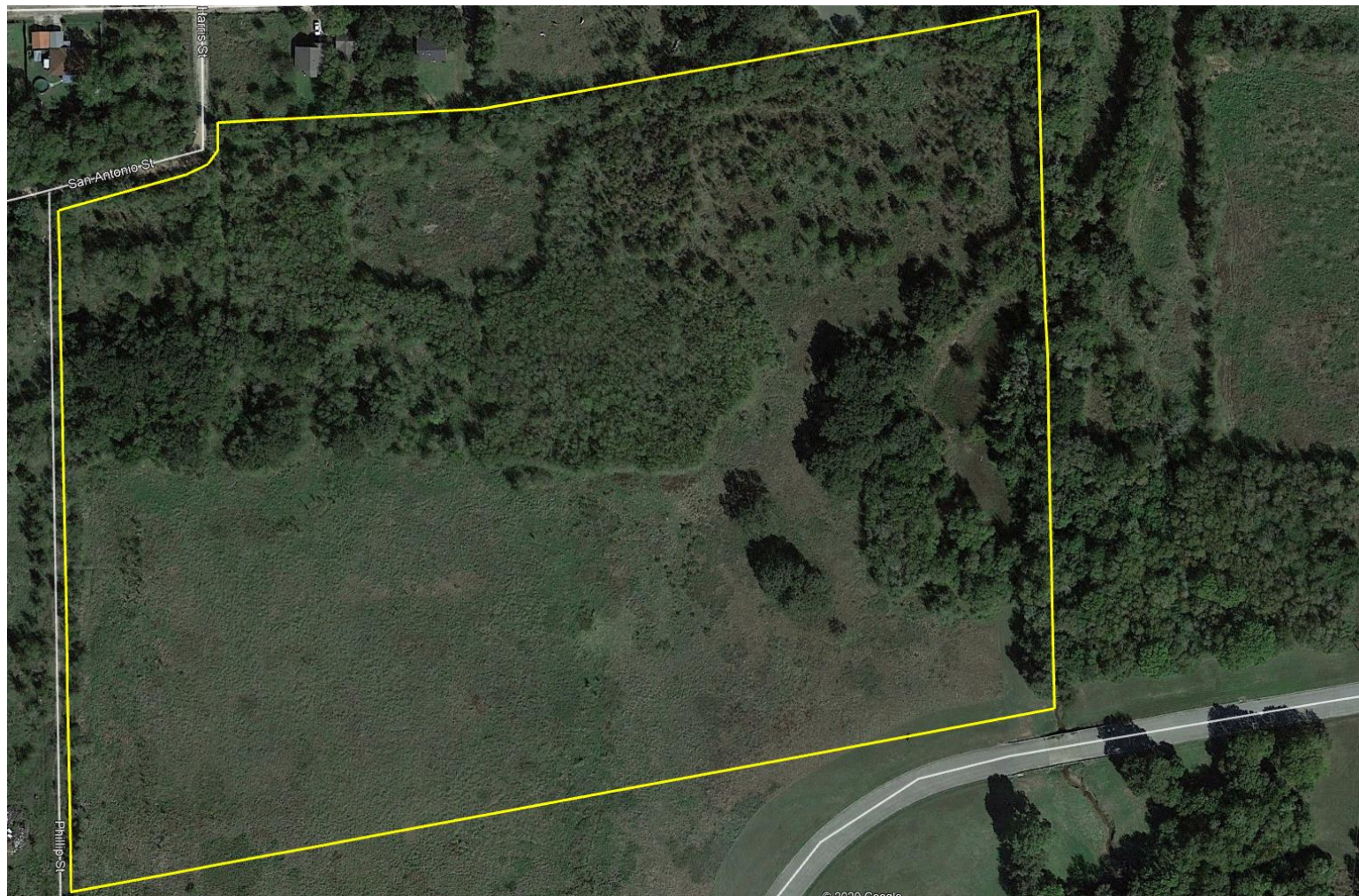
**FOR
SALE**

26.787 Acres MOL

Multi-Use: Residential & Pasture Use

Marlin, Falls County, TX 76661

Property Aerial View



—“Stewards of Land”—
A DBA of Dube's Commercial, Inc. TREC# 484723

Bob Dube (Broker)

512-423-6670 (mobile) 254-803-5263 (LAND)

bob@texasfarmandranchrealty.com

www.texasfarmandranchrealty.com

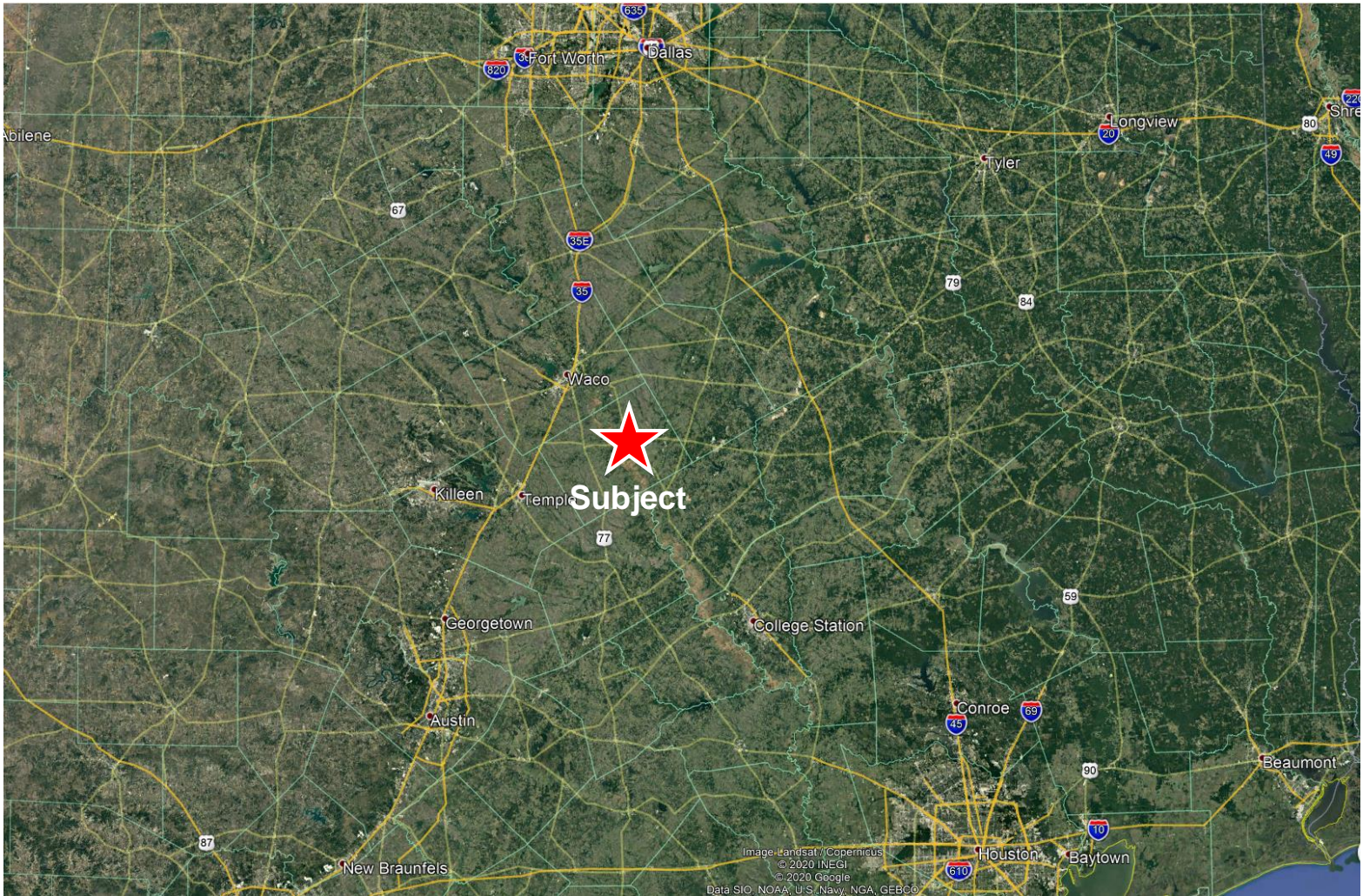
**FOR
SALE**

26.787 Acres MOL

Multi-Use: Residential & Pasture Use

Marlin, Falls County, TX 76661

Property Location Relative to DFW, Austin and Houston



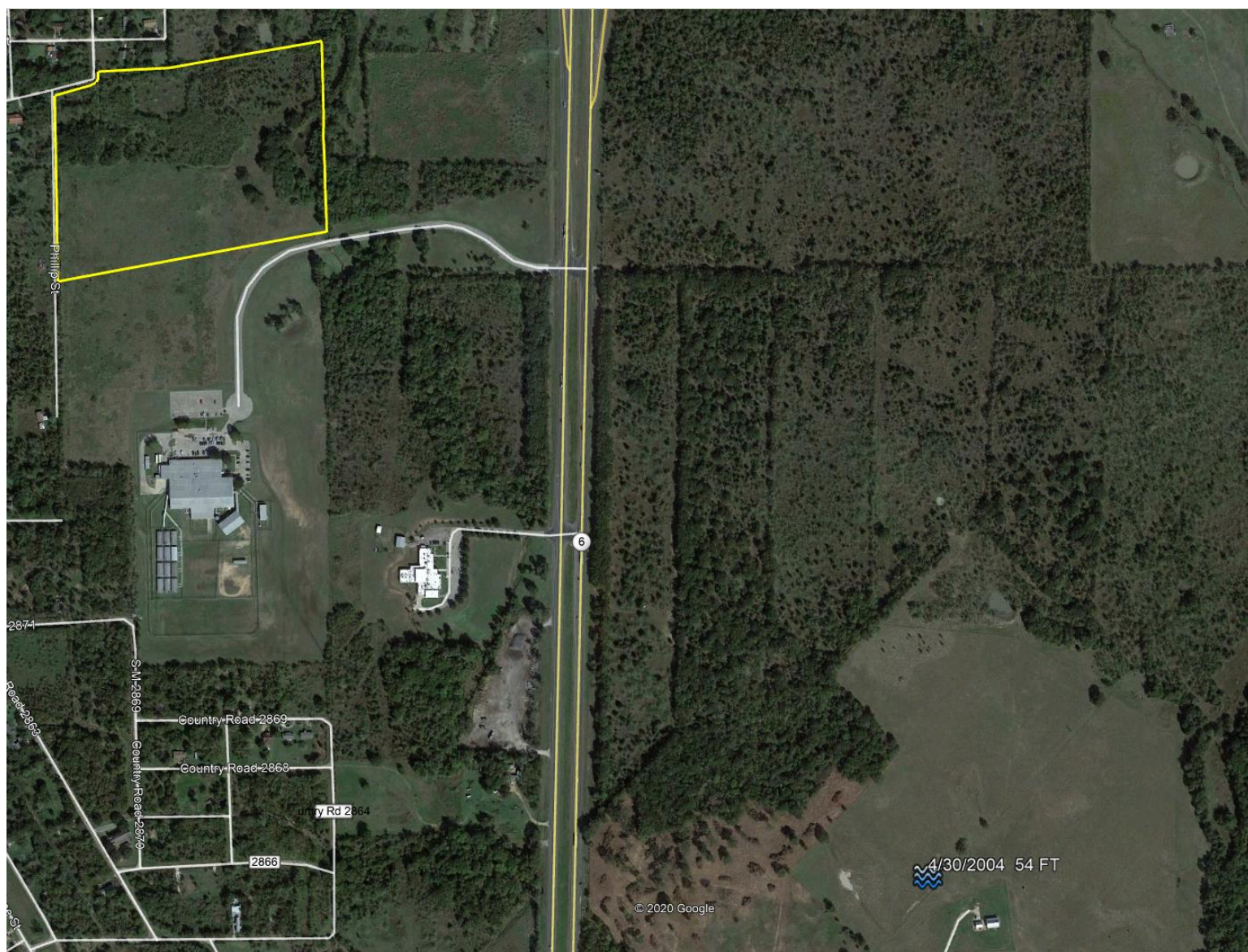
**FOR
SALE**

26.787 Acres MOL

Multi-Use: Residential & Pasture Use

Marlin, Falls County, TX 76661

Aerial of Water Well Nearest Property



— "Stewards of Land" —
A DBA of Dube's Commercial, Inc. TREC# 484723

Bob Dube (Broker)

512-423-6670 (mobile) 254-803-5263 (LAND)

bob@texasfarmandranchrealty.com

www.texasfarmandranchrealty.com

**FOR
SALE**

26.787 Acres MOL

Multi-Use: Residential & Pasture Use

Marlin, Falls County, TX 76661

Soil Map Aerial



**FOR
SALE**

26.787 Acres MOL

Multi-Use: Residential & Pasture Use

Marlin, Falls County, TX 76661

Soil Type Legend

Map Unit Symbol	Map Unit Name	Acres in AOI	Percent of AOI
19	Crockett fine sandy loam, 0 to 1 percent slopes	17.7	67.6%
20	Crockett fine sandy loam, 1 to 3 percent slopes	4.8	18.3%
63	Wilson loam, 0 to 1 percent slopes	3.7	14.1%
Totals for Area of Interest		26.1	100.0%



Bob Dube (Broker)

512-423-6670 (mobile) 254-803-5263 (LAND)

bob@texasfarmandranchrealty.com

www.texasfarmandranchrealty.com

A DBA of Dube's Commercial, Inc. TREC# 484723

**FOR
SALE**

26.787 Acres MOL

Multi-Use: Residential & Pasture Use

Marlin, Falls County, TX 76661

Soil Type – 19

19—Crockett fine sandy loam, 0 to 1 percent slopes. This deep, moderately well drained, nearly level soil is on broad uplands and narrow ridgetops. Slopes are convex, and areas range from 50 to 200 acres in size.

This soil has a surface layer of brown, medium acid fine sandy loam about 10 inches thick. Between depths of 10 and 15 inches is reddish brown, medium acid clay that has reddish yellow and yellowish brown mottles. Between depths of 15 and 26 inches is brownish yellow, medium acid clay that has yellow and yellowish red mottles. Below this layer, to a depth of 37 inches, is light reddish brown, slightly acid clay that has yellowish red and yellow mottles. Very pale brown, neutral clay that has yellow, brownish yellow, and reddish yellow mottles is between depths of 37 and 56 inches. The underlying layer, to a depth of 80 inches, is light gray, moderately alkaline clay loam.

This soil is difficult to work; when dry, it forms extremely hard surface crusts. A dense plowpan forms in cultivated areas. Permeability is very slow, and available water capacity is high. The root zone is deep, but root penetration is slow and difficult in the underlying layers. Runoff is slow. The hazard of water erosion is slight.

Included with this soil in mapping are a few intermingled areas of Normangee and Wilson soils. The included soils make up 10 to 20 percent of this map unit.

This soil has medium potential for crops. The major crops are small grain for winter grazing and grain sorghum. The major objectives in management of this soil are improving soil tilth, maintaining fertility, and controlling erosion. Proper management includes growing high-residue crops and deep-rooted legumes.

This soil has high potential for pasture. It is well suited to coastal bermudagrass, common bermudagrass, and weeping lovegrass. Good pasture management includes fertilization, weed control, and controlled grazing.

This soil has high potential for range. The climax plant community is a mixture of tall and mid grasses and an overstory of a few live oak, elm, and hackberry trees along streams and occasionally in motts.

This soil has low potential for most urban uses. Its most restrictive limitations are shrinking and swelling with changes in moisture, corrosivity to uncoated steel, low strength, and slow percolation. The potential for recreation is medium. The very slow permeability is the most restrictive limitation for this use. Potential for openland and rangeland wildlife habitat is medium. Capability subclass IIIs; Claypan Prairie range site.



Bob Dube (Broker)

512-423-6670 (mobile) 254-803-5263 (LAND)

bob@texasfarmandranchrealty.com

www.texasfarmandranchrealty.com

—'Stewards of Land'
A DBA of Dube's Commercial, Inc. TREC# 484723

**FOR
SALE**

26.787 Acres MOL

Multi-Use: Residential & Pasture Use

Marlin, Falls County, TX 76661

Soil Type – 20

20—Crockett fine sandy loam, 1 to 3 percent slopes. This deep, moderately well drained, gently sloping soil is on uplands. Slopes are convex. Areas range from 35 to 400 acres in size.

This soil has a surface layer of brown, medium acid fine sandy loam about 9 inches thick. Between depths of 9 and 17 inches is mottled brownish yellow and red, medium acid clay that has grayish brown mottles. Below this layer, to a depth of 29 inches, is mottled yellow and grayish brown, medium acid clay, that has reddish yellow mottles. Between depths of 29 and 42 inches is brown, slightly acid clay that has brownish yellow mottles; and between depths of 42 and 53 inches is brownish yellow, neutral clay that has light brownish gray and reddish yellow mottles. Between depths of 53 and 73 inches is yellow, moderately alkaline sandy clay loam that has light brownish gray, white, and yellowish brown mottles. The underlying layer, to a depth of 80 inches, is mottled yellow light gray, and brownish yellow, moderately alkaline sandy clay loam.

Hard surface crusts and dense plowpans that form in cultivated areas make this soil difficult to work. Permeability is very slow, and available water capacity is high. The root zone is deep, but root penetration is slow and difficult in the underlying layers. Runoff is medium. The hazard of water erosion is moderate.

Included with this soil in mapping are a few intermingled areas of Normangee and Wilson soils and eroded Crockett soils. The included soils make up about 10 to 20 percent of this map unit.

This soil has medium potential for production of crops, but it is limited by low natural fertility and rapid loss of soil moisture during the summer. The major crops are small grain for winter grazing and grain sorghum. The major objectives in management are controlling erosion, maintaining fertility, and improving tilth. Terracing and growing high-residue crops and deep-rooted legumes help control erosion and maintain tilth.

This soil has high potential for pasture. It is well suited to coastal bermudagrass, common bermudagrass, and weeping lovegrass. Proper pasture management includes fertilization, weed control, and controlled grazing.

This soil has high potential for range. The climax plant community is a mixture of tall and mid grasses and an overstory of a few live oak, elm, and hackberry trees along streams and in occasional motts.

This soil has low potential for most urban uses. Its most restrictive limitations are shrinking and swelling with changes in moisture, corrosivity to uncoated steel, and slow percolation. The potential for recreation is medium. The very slow permeability is the most restrictive limitation for this use. Potential for openland and rangeland wildlife habitat is medium. Capability subclass IIIe; Claypan Prairie range site.

**FOR
SALE**

26.787 Acres MOL

Multi-Use: Residential & Pasture Use

Marlin, Falls County, TX 76661

Soil Type – 63

63—Wilson loam, 0 to 1 percent slopes. This deep, somewhat poorly drained, nearly level soil is on uplands and terraces. Slopes are plane. Areas range from 15 to 120 acres in size.

This soil has a surface layer of dark grayish brown, slightly acid loam about 6 inches thick. Between depths of 6 and 32 inches is dark gray, neutral clay loam. Between depths of 32 and 60 inches is gray, mildly alkaline clay loam that has brown mottles in the lower part. The underlying layer, to a depth of 80 inches, is light olive gray, moderately alkaline clay loam that has light gray and light brownish gray mottles.

The soil is difficult to work because of dense plowpan layers that form in cultivated areas. Permeability is very slow, and the available water capacity is high. The root zone is deep, but root penetration is slow and difficult in the underlying layers. Runoff is slow. The hazard of water erosion is slight.

Included with this soil in mapping are a few intermingled areas of Wilson silty clay loam and Crockett soils. The included soils make up 10 to 20 percent of these areas.

This soil has medium potential for production of crops. The major crops are grain sorghum, cotton, hay, and some small grain for winter grazing. The objectives of management are improving tilth and maintaining fertility. Growing crops that produce large amounts of residue and legumes helps maintain tilth.

This soil has medium potential for pasture. It is well suited to coastal bermudagrass, King Ranch bluestem, and weeping lovegrass. Proper management includes fertilization, weed control, and controlled grazing.

This soil has medium potential for range. The climax plant community is a mixture of tall and mid grasses and an overstory of a few live oak, elm, and hackberry trees along streams and occasionally in motts.

This soil has low potential for most urban uses. Its most restrictive limitations are shrinking and swelling with changes in moisture, occasional wetness, low strength, corrosivity to uncoated steel, and slow percolation. The potential for recreation is medium. Wetness and the very slow permeability are the most restrictive limitations for this use. Potential for both openland and rangeland wildlife habitat is medium. Capability subclass IIIw; Claypan Prairie range site.



Bob Dube (Broker)

512-423-6670 (mobile) 254-803-5263 (LAND)

bob@texasfarmandranchrealty.com

www.texasfarmandranchrealty.com

—Stewards of Land—
A DBA of Dube's Commercial, Inc. TREC# 484723

FOR
SALE

26.787 Acres MOL

Multi-Use: Residential & Pasture Use

Marlin, Falls County, TX 76661

Survey



—“Stewards of Land”—
A DBA of Dube’s Commercial, Inc. TREC# 484723

Bob Dube (Broker)

512-423-6670 (mobile) 254-803-5263 (LAND)

bob@texasfarmandranchrealty.com

www.texasfarmandranchrealty.com

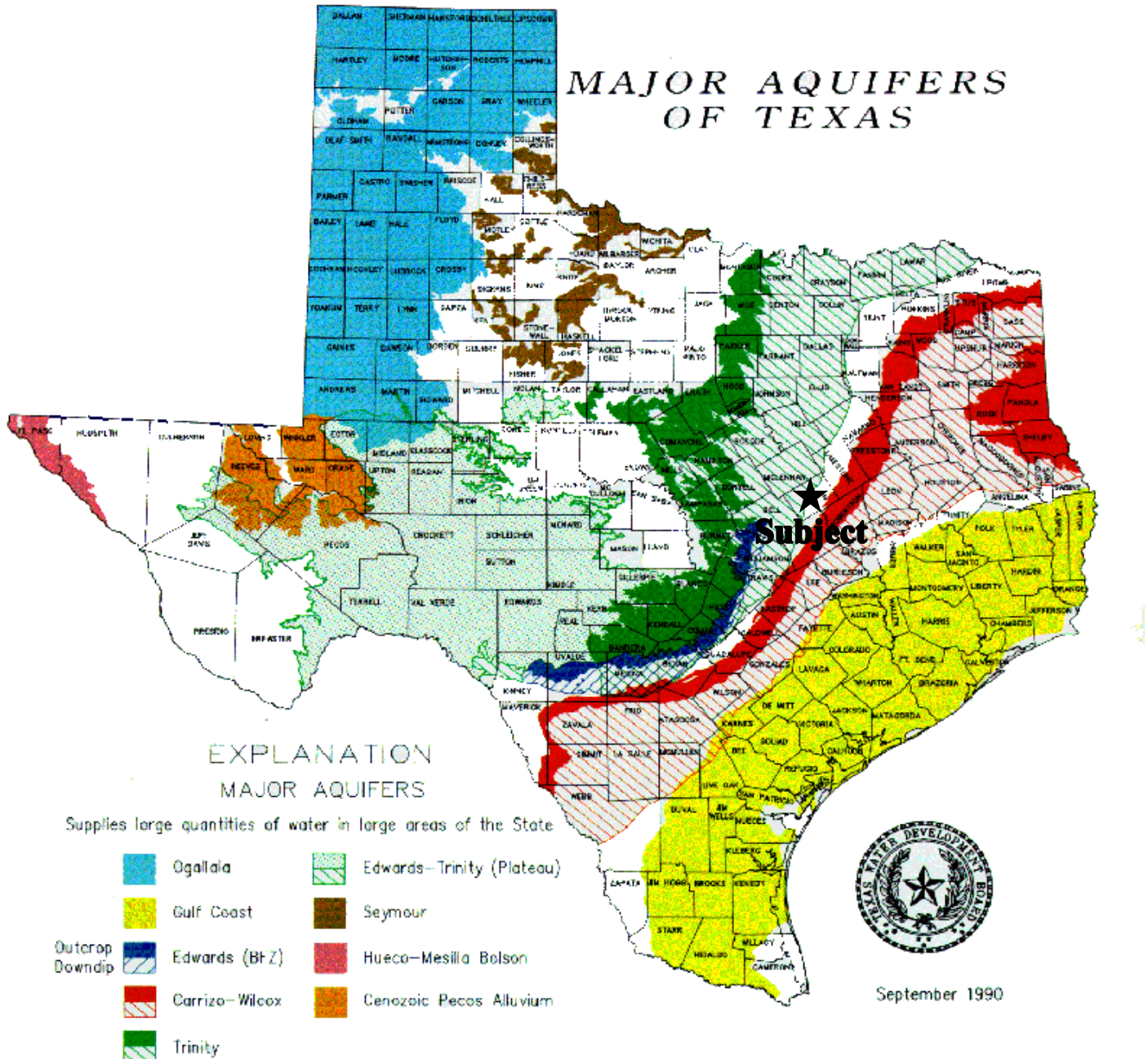
FOR
SALE

26.787 Acres MOL

Multi-Use: Residential & Pasture Use

Marlin, Falls County, TX 76661

Property Location to Major Aquifers of Texas



TEXAS
FARM & RANCH REALTY

—“Stewards of Land”—
A DBA of Dube’s Commercial, Inc. TREC# 484723

Bob Dube (Broker)

512-423-6670 (mobile) 254-803-5263 (LAND)

bob@texasfarmandranchrealty.com www.texasfarmandranchrealty.com

**FOR
SALE**

26.787 Acres MOL

Multi-Use: Residential & Pasture Use

Marlin, Falls County, TX 76661

Regulations for Livestock and Hoofed Animals

The following are regulations that must be adhered to if you have or intend to have livestock or hoofed animals within the city limits.

Hogs, Sows and Pigs are not permitted within the City Limits, no exceptions.

You may not allow any livestock or hoofed animal to be pastured, herded, staked or tied in any street, lane, alley, park or other public place. Must have property owner's permission and may not be allowed to trespass upon private, public or neighboring property.

Livestock or hoofed animals may not remain tied or staked beyond sunset.

You may not keep or harbor any livestock or hoofed animal within the City in a pen or other enclosure situated at any point closer than two hundred (200) feet to any residence, excluding the residence of the person keeping or harboring the livestock or hoofed animal.

Livestock and hoofed animals must have at least six hundred (600) square feet of shelter area per animal except for those persons who hold right, by title or lease, to at least 1.5 acres per animal at the site where the livestock is kept or harbored.

You are not allowed to ride any livestock or hoofed animal in the downtown area or on any public street or sidewalk.

If you currently have livestock or hoofed animals being kept or harbored in the city limits of Marlin and you are not in compliance with the current regulations, you could be subject to fines and fees at such time that contact is made by the Animal Control Officer, Police Officer or Code Enforcement Officer.

If you have any questions or concerns regarding these regulations, please contact the Animal Control Officer at (254) 883-1450 ext.1022 or via email at animalcontrol@marlintx.net



Bob Dube (Broker)

512-423-6670 (mobile) 254-803-5263 (LAND)

bob@texasfarmandranchrealty.com

www.texasfarmandranchrealty.com

A DBA of Dube's Commercial, Inc. TREC# 484723

**FOR
SALE**

26.787 Acres MOL

Multi-Use: Residential & Pasture Use

Marlin, Falls County, TX 76661

CONFIDENTIALITY & DISCLAIMER

The information contained in the following Investment Brochure is proprietary and strictly confidential. It is intended to be reviewed only by the party receiving it from Dube's Commercial Inc. and should not be made available to any other person or entity without the written consent of Dube's Commercial Inc. This Investment Brochure has been prepared to provide summary information to prospective investors, and to establish only a preliminary level of interest in the subject property. The information contained herein is not a substitute for a thorough due diligence investigation. Dube's Commercial Inc. makes no warranty or representation, with respect to the income or expenses for the subject property, the future projected financial performance of the property, the size and square footage of the property and improvements, the presence or absence of contaminating substances, PCB's or asbestos, the compliance with State and Federal regulations, the physical condition of the improvements thereon, or the financial condition or business prospects of any tenant, or any tenant's plans or intentions to continue its occupancy of the subject property. The information contained in this Investment Brochure has been obtained from sources we believe to be reliable; however, Dube's Commercial Inc. makes no warranty or representation whatsoever regarding the accuracy or completeness of the information provided.

**THE TEXAS REAL ESTATE COMMISSION (TREC) REGULATES
REAL ESTATE BROKERS AND SALES AGENTS, REAL ESTATE INSPECTORS,
HOME WARRANTY COMPANIES, EASEMENT AND RIGHT-OF-WAY AGENTS
AND TIMESHARE INTEREST PROVIDERS**

**YOU CAN FIND MORE INFORMATION AND
CHECK THE STATUS OF A LICENSE HOLDER AT
WWW.TREC.TEXAS.GOV**

**YOU CAN SEND A COMPLAINT AGAINST A LICENSE HOLDER TO TREC
A COMPLAINT FORM IS AVAILABLE ON THE TREC WEBSITE**

**TREC ADMINISTERS TWO RECOVERY FUNDS WHICH MAY BE USED TO
SATISFY A CIVIL COURT JUDGMENT AGAINST A BROKER, SALES AGENT,
REAL ESTATE INSPECTOR, OR EASEMENT OR RIGHT-OF-WAY AGENT,
IF CERTAIN REQUIREMENTS ARE MET**

**IF YOU HAVE QUESTIONS OR ISSUES ABOUT THE ACTIVITIES OF
A LICENSE HOLDER, THE COMPLAINT PROCESS OR THE
RECOVERY FUNDS, PLEASE VISIT THE WEBSITE OR CONTACT TREC AT**



**TEXAS REAL ESTATE COMMISSION
P.O. BOX 12188
AUSTIN, TEXAS 78711-2188
(512) 936-3000**



Bob Dube (Broker)

512-423-6670 (mobile) 254-803-5263 (LAND)

bob@texasfarmandranchrealty.com

www.texasfarmandranchrealty.com

~"Stewards of Land"
A DBA of Dube's Commercial, Inc. TREC# 484723



Information About Brokerage Services

Texas law requires all real estate license holders to give the following information about brokerage services to prospective buyers, tenants, sellers and landlords.

11-2-2015



TYPES OF REAL ESTATE LICENSE HOLDERS:

- A **BROKER** is responsible for all brokerage activities, including acts performed by sales agents sponsored by the broker.
- A **SALES AGENT** must be sponsored by a broker and works with clients on behalf of the broker.

A BROKER'S MINIMUM DUTIES REQUIRED BY LAW (A client is the person or party that the broker represents):

- Put the interests of the client above all others, including the broker's own interests;
- Inform the client of any material information about the property or transaction received by the broker;
- Answer the client's questions and present any offer to or counter-offer from the client; and
- Treat all parties to a real estate transaction honestly and fairly.

A LICENSE HOLDER CAN REPRESENT A PARTY IN A REAL ESTATE TRANSACTION:

AS AGENT FOR OWNER (SELLER/LANDLORD): The broker becomes the property owner's agent through an agreement with the owner, usually in a written listing to sell or property management agreement. An owner's agent must perform the broker's minimum duties above and must inform the owner of any material information about the property or transaction known by the agent, including information disclosed to the agent or subagent by the buyer or buyer's agent.

AS AGENT FOR BUYER/TENANT: The broker becomes the buyer/tenant's agent by agreeing to represent the buyer, usually through a written representation agreement. A buyer's agent must perform the broker's minimum duties above and must inform the buyer of any material information about the property or transaction known by the agent, including information disclosed to the agent by the seller or seller's agent.

OR BOTH - INTERMEDIARY: To act as an intermediary between the parties the broker must first obtain the written *each party* to the transaction. The written agreement must state who will pay the broker and, in conspicuous bold or underlined print, set forth the broker's obligations as an intermediary. A broker who acts as an intermediary:

- Must treat all parties to the transaction impartially and fairly;
- May, with the parties' written consent, appoint a different license holder associated with the broker to each party (owner and buyer) to communicate with, provide opinions and advice to, and carry out the instructions of each party to the transaction.
- Must not, unless specifically authorized in writing to do so by the party, disclose:
 - that the owner will accept a price less than the written asking price;
 - that the buyer/tenant will pay a price greater than the price submitted in a written offer; and
 - any confidential information or any other information that a party specifically instructs the broker in writing not to disclose, unless required to do so by law.

AS SUBAGENT: A license holder acts as a subagent when aiding a buyer in a transaction without an agreement to represent the buyer. A subagent can assist the buyer but does not represent the buyer and must place the interests of the owner first.

TO AVOID DISPUTES, ALL AGREEMENTS BETWEEN YOU AND A BROKER SHOULD BE IN WRITING AND CLEARLY ESTABLISH:

- The broker's duties and responsibilities to you, and your obligations under the representation agreement.
- Who will pay the broker for services provided to you, when payment will be made and how the payment will be calculated.

LICENSE HOLDER CONTACT INFORMATION: This notice is being provided for information purposes. It does not create an obligation for you to use the broker's services. Please acknowledge receipt of this notice below and retain a copy for your records.

Dube's Commercial, Inc.	484723	bob@dubesccommercial.com	512-671-8008
Licensed Broker /Broker Firm Name or Primary Assumed Business Name	License No.	Email	Phone
Robert T. Dube	365515	bob@texasfarmandranchrealty.com	254-803-5263
Designated Broker of Firm	License No.	Email	Phone
Licensed Supervisor of Sales Agent/ Associate	License No.	Email	Phone
Sales Agent/Associate's Name	License No.	Email	Phone

Buyer/Tenant/Seller/Landlord Initials

Date