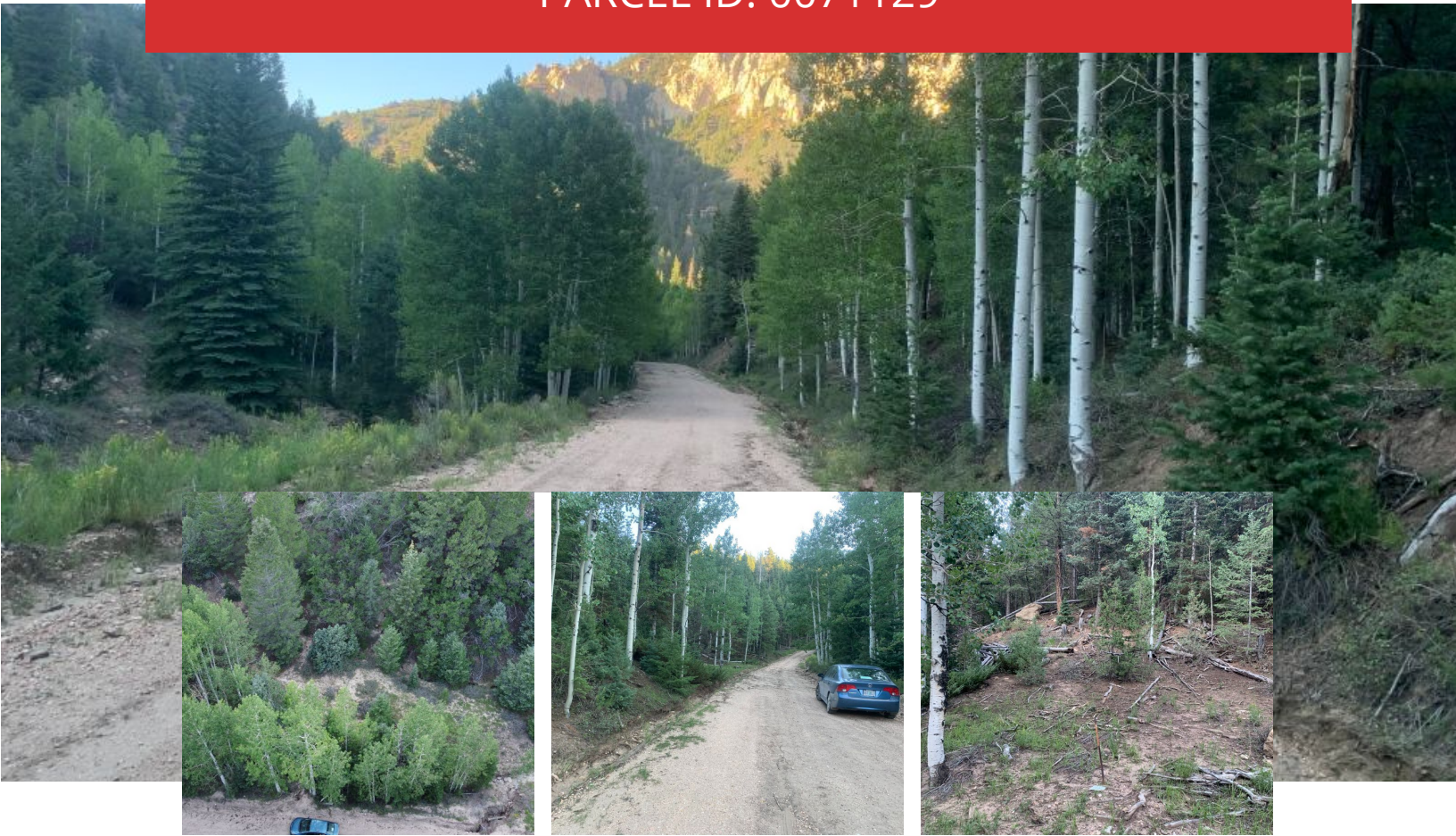




# 0.50 acre in Bryce Woodlands, Alton, UT

PARCEL ID: 0071129



## Description

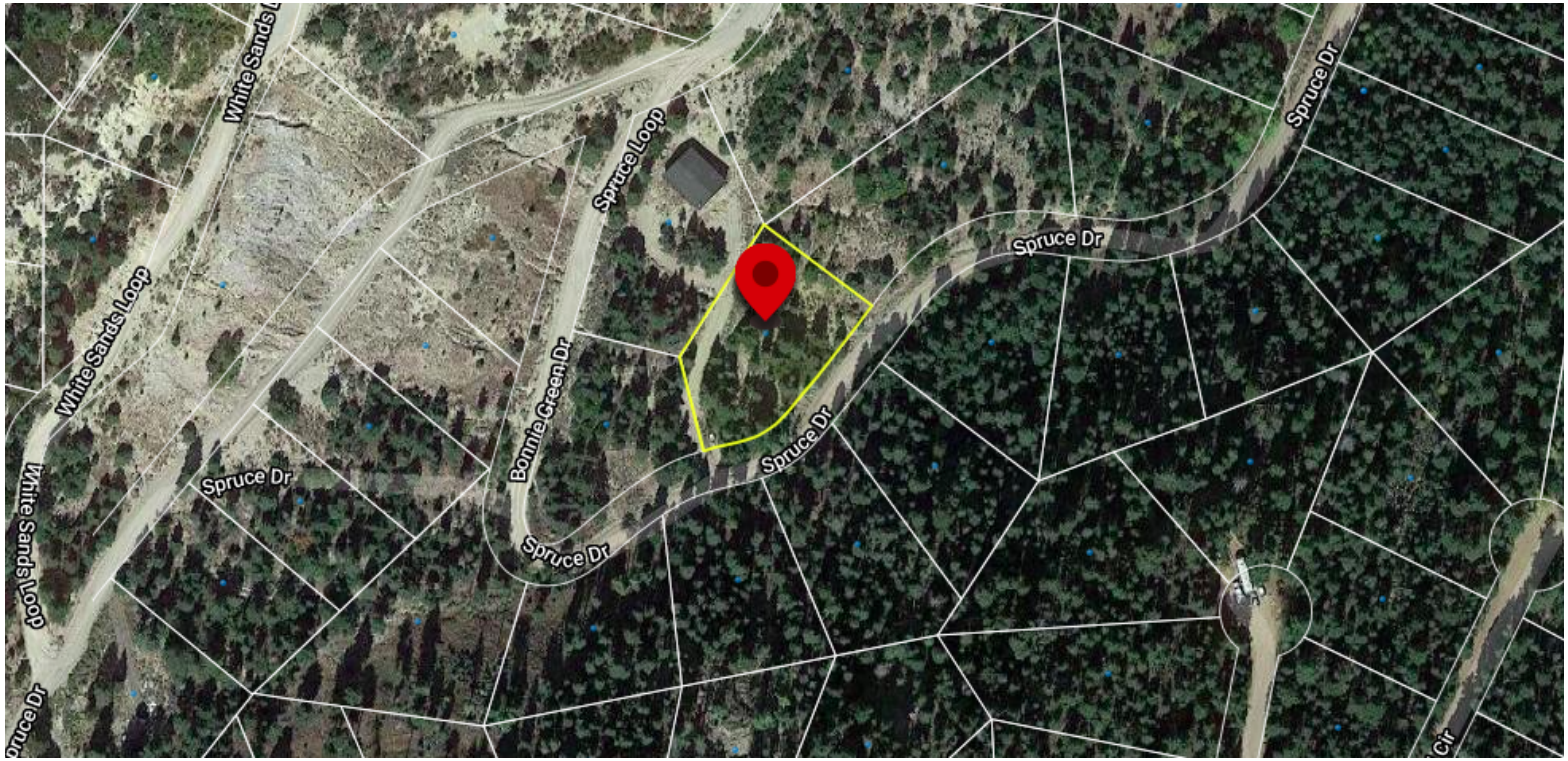
Enjoy a tranquil mountain setting with this 0.50 acre land just North of Kanab in Kane County, Utah. Conveniently located near Duck Creek Village, Zion National Park and Bryce Canyon National Park, this is a cool property tucked into a neighborhood offers picturesque views of Utah's rugged mountains.

It's about 200 miles northeast of Las Vegas and is currently the 6th town in Airbnb's list of most popular destinations – talk about a great way to cash flow off your investment!

Build your home and be near Southern Utah's geological wonders, state parks, national monuments and national parks. Explore the unique history and culture of the region with nearby historical sites, museums, and galleries.

[wilcolandllc.com](http://wilcolandllc.com)





## Property Details:

ACREAGE  
0.47

PARCEL ID  
0071129

ZONING  
R1/2

COUNTY  
Kane

STATE  
Utah

ANNUAL TAXES  
\$71.24

## ACCESS

Use GPS coordinates to access. Google earth, aerial imagery and OnX are also helpful!

## TERRAIN

Power, telephone and internet are available. You can drill a well for water and install septic.

## MORE INFO ON ZONING

- To provide for residential neighborhoods of a rural character together with a limited number of livestock for the benefit and enjoyment of the residents.

## BUILDABILITY:

- Yes. Single family dwelling (1 per lot or parcel)

## AREA AND SETBACK REGULATIONS:

Area - 1/2 acre

Front - 30 feet

Side - 10 feet

Rear - 10 feet





CENTER COORDINATES  
37.525353, -112.411240

GOOGLE EARTH

[View on Google Earth](#)

GOOGLE MAPS

[View on Google Maps](#)

Contact property sales manager for  
pricing and terms!!

\*Wilco reserves the right to approve or deny any proposed installment payment plans.

Questions? Contact the Property Sales Manager:

Lis Rosaldo | 605-667-5474 | [Liz@WilcolandLLC.com](mailto:Liz@WilcolandLLC.com)

