



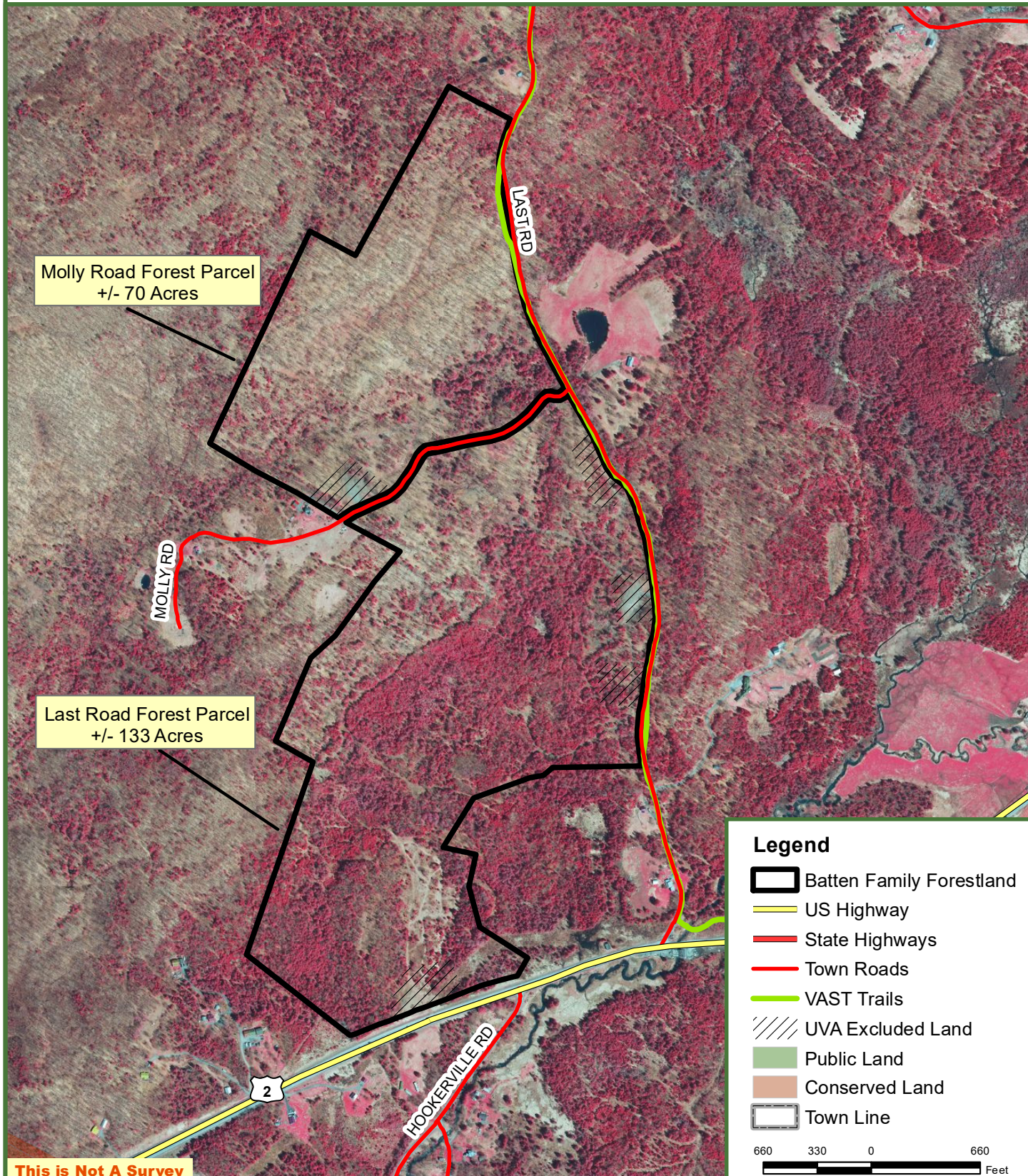
# Batten Family Forestland

203 +/- Tax Acres

Cabot, Washington County, Vermont



**Fountains  
Land**  
AN F&W COMPANY



## Legend

- Batten Family Forestland
- US Highway
- State Highways
- Town Roads
- VAST Trails
- UVA Excluded Land
- Public Land
- Conserved Land
- Town Line

660 330 0 660  
Feet

Map produced from the best available information including UVA map, town tax maps, hand held GPS data, aerial photography and reference information obtained from publicly available GIS sources. Boundary lines portrayed on this map are approximate and could be different than the actual location of boundaries found in the field. Map is not a survey.