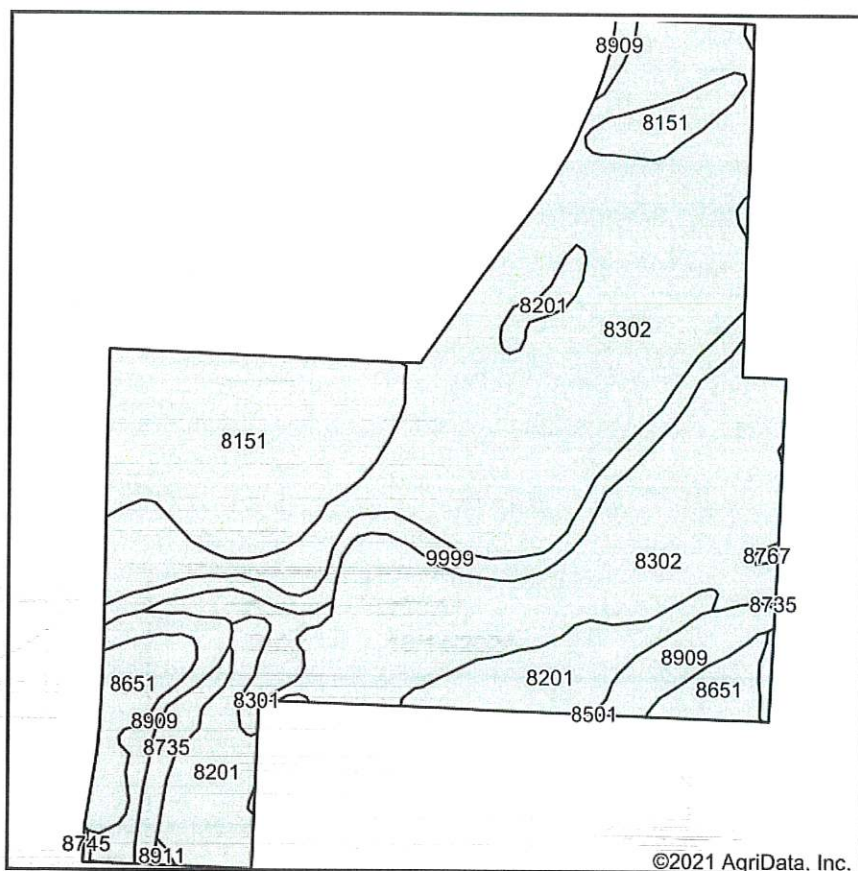
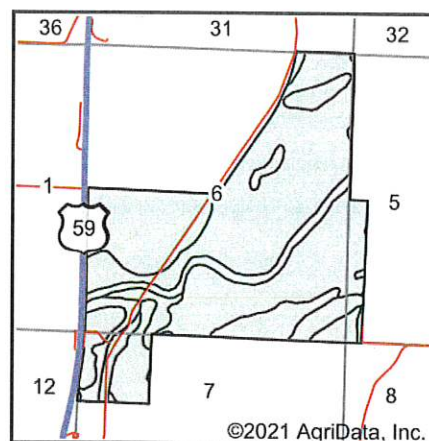


# Soils Map



Soils data provided by USDA and NRCS.



State: **Kansas**  
 County: **Anderson**  
 Location: **6-20S-20E**  
 Township: **Monroe**  
 Acres: **459.57**  
 Date: **10/14/2021**



Area Symbol: KS003, Soil Area Version: 20

| Code             | Soil Description                                                    | Acres  | Percent of field | Non-Irr Class *c | Range Production (lbs/acre/yr) | *n NCCPI Soybeans |
|------------------|---------------------------------------------------------------------|--------|------------------|------------------|--------------------------------|-------------------|
| 8302             | Verdigris silt loam, 0 to 1 percent slopes, occasionally flooded    | 251.35 | 54.7%            | IIw              | 7758                           | 76                |
| 8151             | Lanton silty clay loam, 0 to 2 percent slopes, occasionally flooded | 75.44  | 16.4%            | IIw              | 7000                           | 64                |
| 8201             | Osage silty clay loam, 0 to 1 percent slopes, occasionally flooded  | 45.05  | 9.8%             | IIw              | 7282                           | 43                |
| 8909             | Stony Land-Talihina complex, 15 to 45 percent slopes                | 25.17  | 5.5%             | VIIe             | 1796                           | 24                |
| 9999             | Water                                                               | 21.32  | 4.6%             |                  | 0                              |                   |
| 8651             | Clareson-Rock outcrop complex, 1 to 3 percent slopes                | 21.30  | 4.6%             | VIIs             | 3275                           | 25                |
| 8301             | Verdigris silt loam, 0 to 1 percent slopes, frequently flooded      | 9.94   | 2.2%             | VW               | 8048                           | 52                |
| 8735             | Eram silty clay loam, 3 to 7 percent slopes                         | 7.48   | 1.6%             | IVe              | 4116                           | 38                |
| 8763             | Eram-Talihina complex, 5 to 20 percent slopes                       | 1.27   | 0.3%             | VIe              | 4045                           | 29                |
| 8767             | Eram-Verdigris complex, 0 to 8 percent slopes                       | 0.53   | 0.1%             | IVe              | 5256                           | 44                |
| 8911             | Summit silty clay loam, 1 to 3 percent slopes                       | 0.45   | 0.1%             | Ile              | 4828                           | 60                |
| 8745             | Eram-Clareson complex, 1 to 15 percent slopes                       | 0.27   | 0.1%             | IVe              | 3921                           | 35                |
| Weighted Average |                                                                     |        |                  | 2.48             | 6621.4                         | *n 60.7           |

\*n: The aggregation method is "Weighted Average using all components"

\*c: Using Capabilities Class Dominant Condition Aggregation Method

Soils data provided by USDA and NRCS.