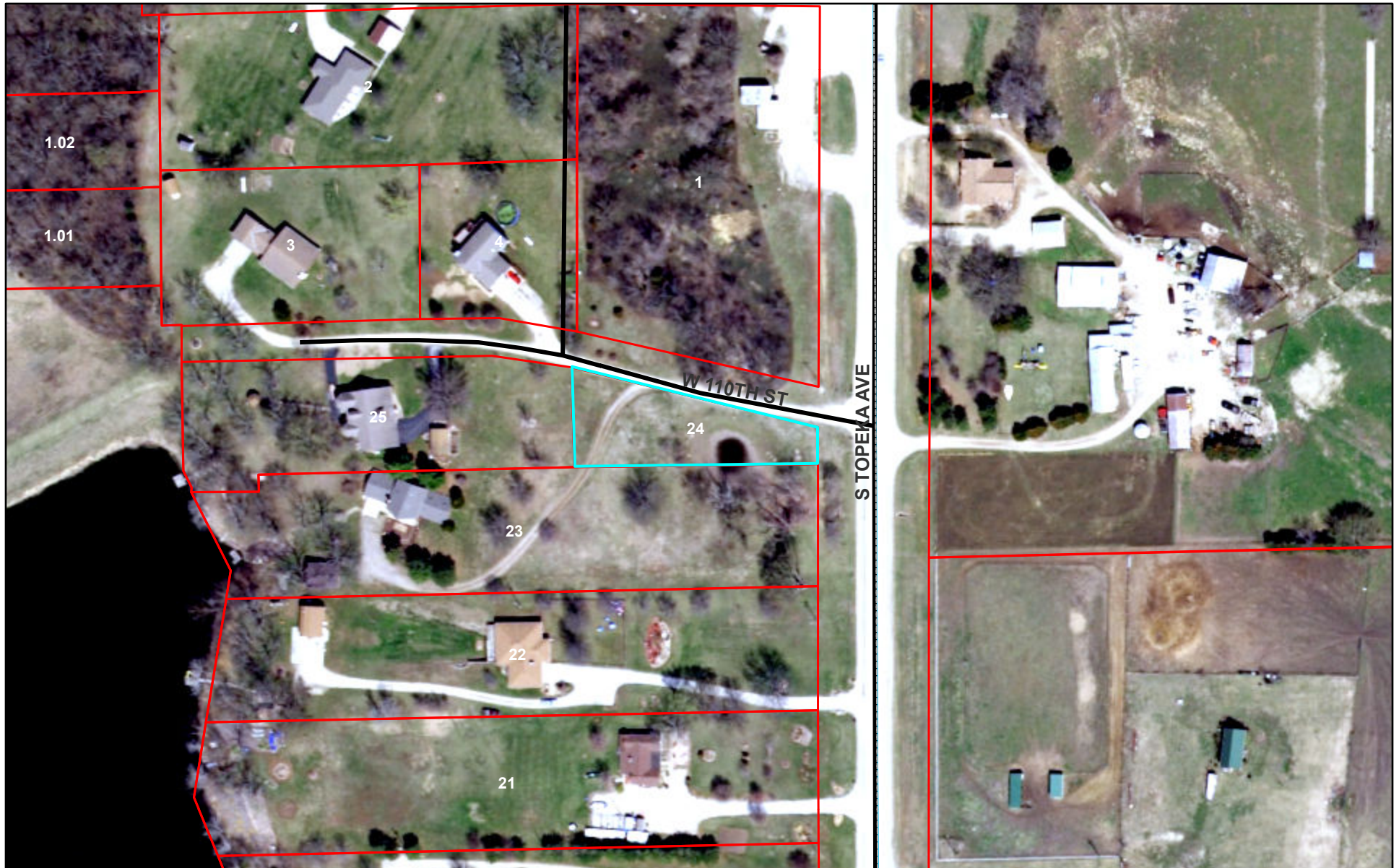


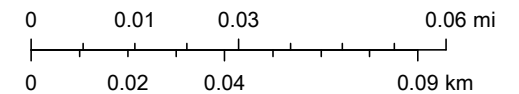
# 141 W 110th St 2nd parcel



10/28/2021, 10:06:28 PM

- Appraisers Office Land Ownership (Parcels)
- CAMA Map Sheet Index
- Sections
- Osage County Boundary
- Roads
- NG911 2014 Aerial Image (leaf off, 1' pixel)
- Red: Band\_1
- Green: Band\_2

1:2,257



Missouri Dept. of Conservation, Esri, HERE, Garmin, INCREMENT P, NGA,

OS User  
Missouri Dept. of Conservation, Esri, HERE, Garmin, INCREMENT P, NGA, USGS |