

FOR SALE



**PEARSON
REALTY**

AGRICULTURAL PROPERTIES
A Tradition in Trust Since 1919

Plainview Olives



**39.56± Assessed Acres
Tulare County, California**

- Lindmore Irrigation District
- Organically Farmed Olives
- Great Location

**Exclusively Presented By:
Pearson Realty**



CALIFORNIA'S LARGEST AG BROKERAGE FIRM

www.pearsonrealty.com

CA DRE #00020875



Plainview Olives

39.56± Assessed Acres

\$1,068,120

DESCRIPTION:

Available for sale is an organic olive ranch in an excellent farming location and features good soil and irrigation water from Lindmore Irrigation District.

LOCATION:

The property is conveniently located on the northwest corner of Avenue 208 and Road 196, just west of Strathmore and north of the community of Plainview, California.

LEGAL:

Tulare County APN: 198-140-006.
Zoning: AE-20
The property is in the Williamson Act Contract.

PLANTINGS:

The property is planted to organically farmed olives.

WATER:

Irrigation water is provided by Lindmore Irrigation District. The trees are furrow irrigated.

SOILS:

100% Exeter loam 0 to 2 percent slopes.

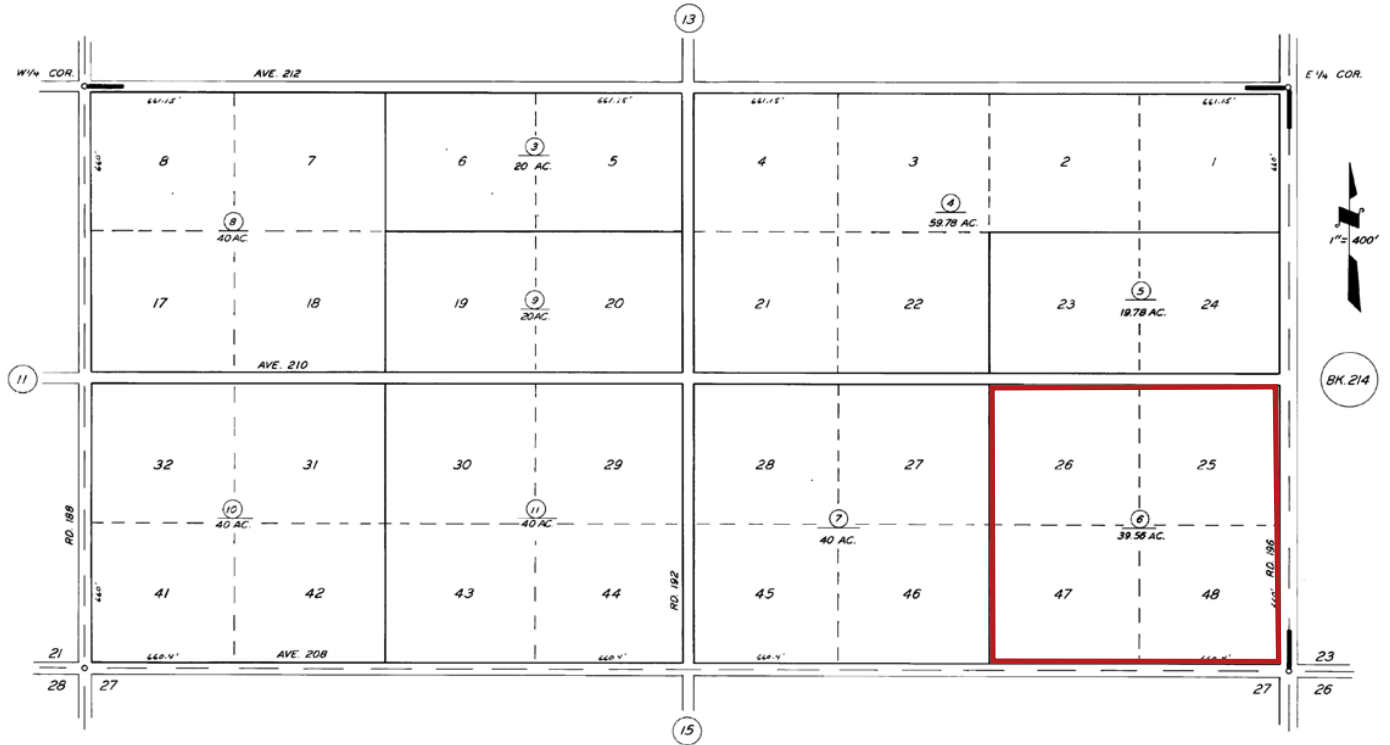
PRICE/TERMS:

The asking price is \$1,068,120 cash at close of escrow.

ASSESSOR'S PARCEL MAP

S 1/2 SEC. 22, T.20S., R.26E., M.D.B. & M.

TAX CODE AREA **198-14**
141-001



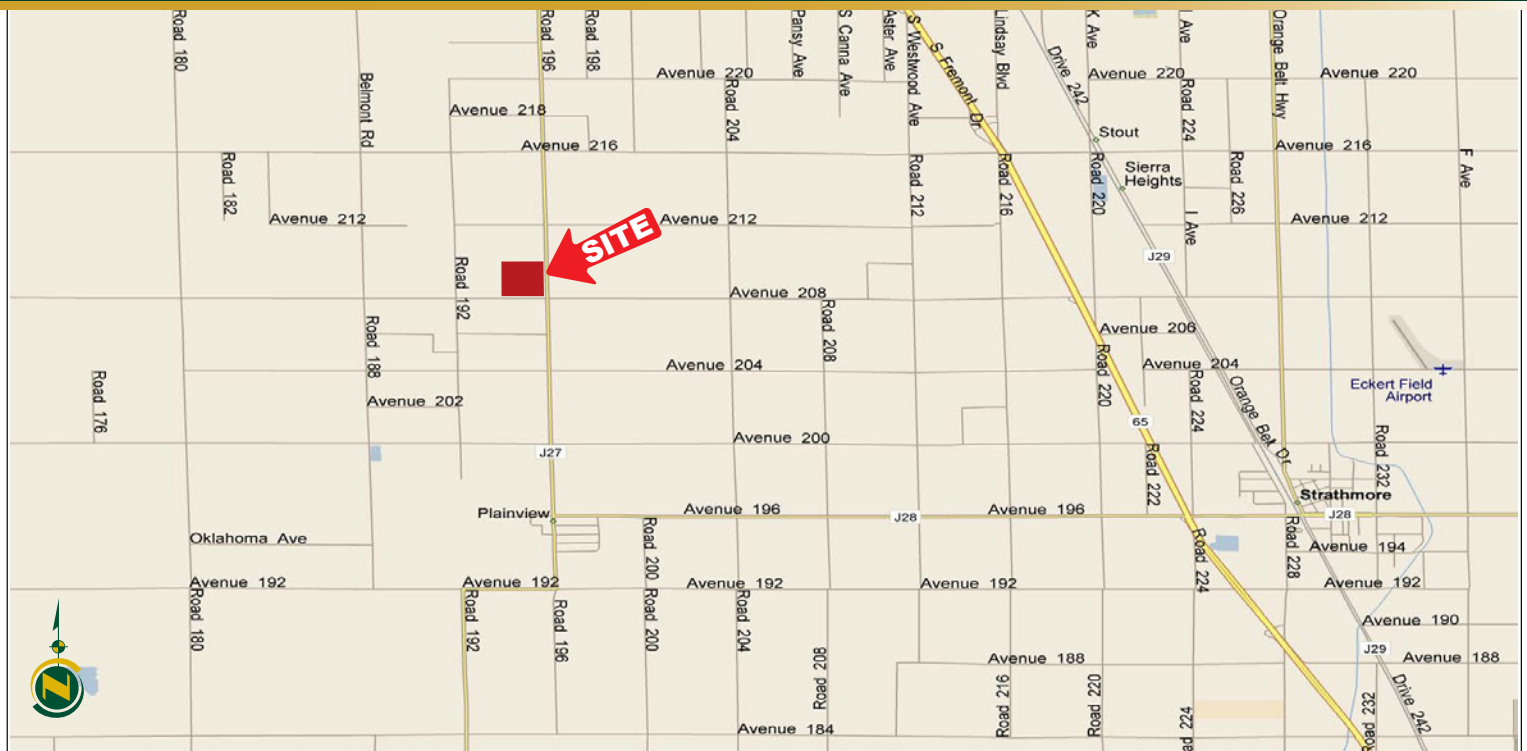
POR. LINDSAY ORANGE COL. R.M. 10-6

ASSESSOR'S MAPS BK. 198, PG. 14
COUNTY OF TULARE, CALIF.

AERIAL MAP



LOCATION MAP



REGIONAL MAP



Water Disclosure: The Sustainable Groundwater Management Act (SGMA) was passed in 2014, requiring groundwater basins to be sustainable by 2040. SGMA requires a Groundwater Sustainability Plan (GSP) by 2020. SGMA may limit the amount of well water that may be pumped from underground aquifers. Buyers and tenants to a real estate transaction should consult with their own water attorney; hydrologist; geologist; civil engineer; or other environmental professional. Additional information is available at: California Department of Water Resources Sustainable Groundwater Management Act Portal - <https://sgma.water.ca.gov/portal/> Telephone Number: (916) 653-5791

Offices Serving The Central Valley

FRESNO

7480 N Palm Ave, Ste 101
Fresno, CA 93711
559.432.6200

VISALIA

3447 S Demaree Street
Visalia, CA 93277
559.732.7300

BAKERSFIELD

4900 California Ave, Ste 210 B
Bakersfield, CA 93309
661.334.2777



**Download Our
Mobile App!**

pearsonrealty.com/mobileapp



Download on the
App Store



GET IT ON
Google Play

We believe the information contained herein to be correct. It is obtained from sources which we regard as reliable, but we assume no liability for errors or omissions. Policy on cooperation: All real estate licensees are invited to offer this property to prospective buyers. Do not offer to other agents without prior approval.