



# Cuero Oilfield Housing

513 FM 766, Cuero, TX 77954

7.82 Acres

\$3,115,000



## 104 STUDIO UNITS

## REC/DINING HALL

## CITY UTILITIES

Cuero Oilfield Housing, LLC currently operates 104 rooms to provide lodging for the oilfield workers in the Eagleford Shale. This property is very popular with several oilfield companies and provides guests with food and housing as needed. As the oil and gas prices continue to rise, this income-producing property potentially stands to benefit into the future. See the company website at [ohcuero.com](http://ohcuero.com).

Built in 2014, this compound consists of 20 – 18x76 ft. lodge buildings with 5 rooms per building. Each studio room has its own bed, recliner, bathroom, closet, TV, and wireless internet. There is also a separate office building, and a larger dining facility with a lounge area, open dining room, laundry rooms, office space, workout room, and a state-of-the-art commercial kitchen with all the necessary equipment to feed large quantities of people. A lighted basketball court is located behind the dining hall. The site was originally designed for 170 rooms and has the infrastructure in place to add more rooms or even RVs for additional income. Utilities include City of Cuero water and sewer for all buildings. The property is high fenced along the perimeter and has a security gate at the entrance.

The land is level with no floodplain and has 800 feet of FM 766 road frontage. A large, manicured yard with several live oak trees wraps around the side and back of the property. Other trees include mesquites along the perimeter and crepe myrtles near the buildings. No mineral rights are included.

Copyright 2021 Grand Land Realty, LLC  
The material contained in this document is based in part upon information furnished to Grand Land Realty, LLC. by sources deemed to be reliable. The information is believed to be accurate in all material respects, but no representation or warranty, expressed, or implied, as to list accuracy or completeness is made by any party. Recipients should conduct their own investigation and analysis of the information described herein.



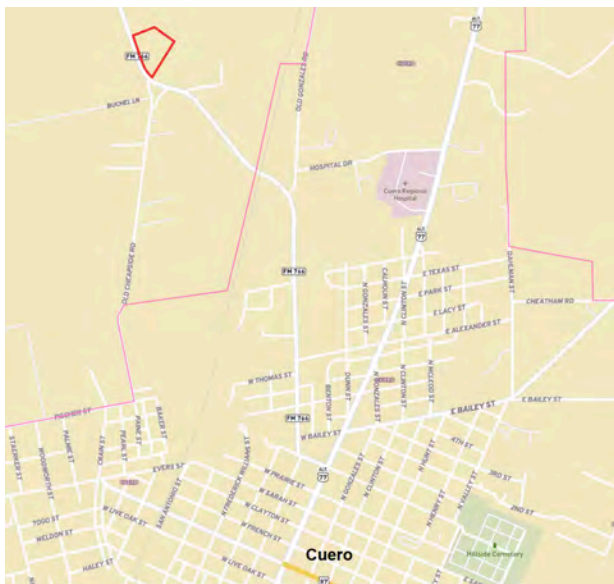
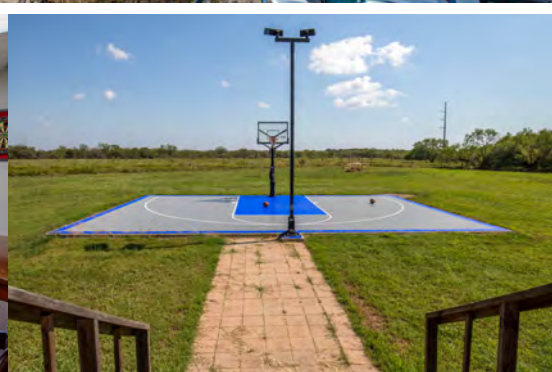
**Kendrick Baros**

**Realtor® - Land Specialist**

**[kendrick@grandlandco.com](mailto:kendrick@grandlandco.com)**

**(361) 212-2892**





## LOCATION

DeWitt County, Cuero ISD. 1.6 miles to Hwy 183 in Cuero, 30 miles to Victoria, 94 miles to downtown San Antonio, 102 miles to San Antonio International Airport.

## DIRECTIONS

From Cuero head north on Hwy 183 (Esplanade St). Turn left on FM 766 (W Reuss Blvd). In 1.6 miles look for the Cuero Oilfield Housing entrance on the right.

Copyright 2021 Grand Land Realty, LLC  
The material contained in this document is based in part upon information furnished to Grand Land Realty, LLC. by sources deemed to be reliable. The information is believed to be accurate in all material respects, but no representation or warranty, expressed, or implied, as to list accuracy or completeness is made by any party. Recipients should conduct their own investigation and analysis of the information described herein.



**Kendrick Baros**

**Realtor® - Land Specialist**

**kendrick@grandlandco.com**

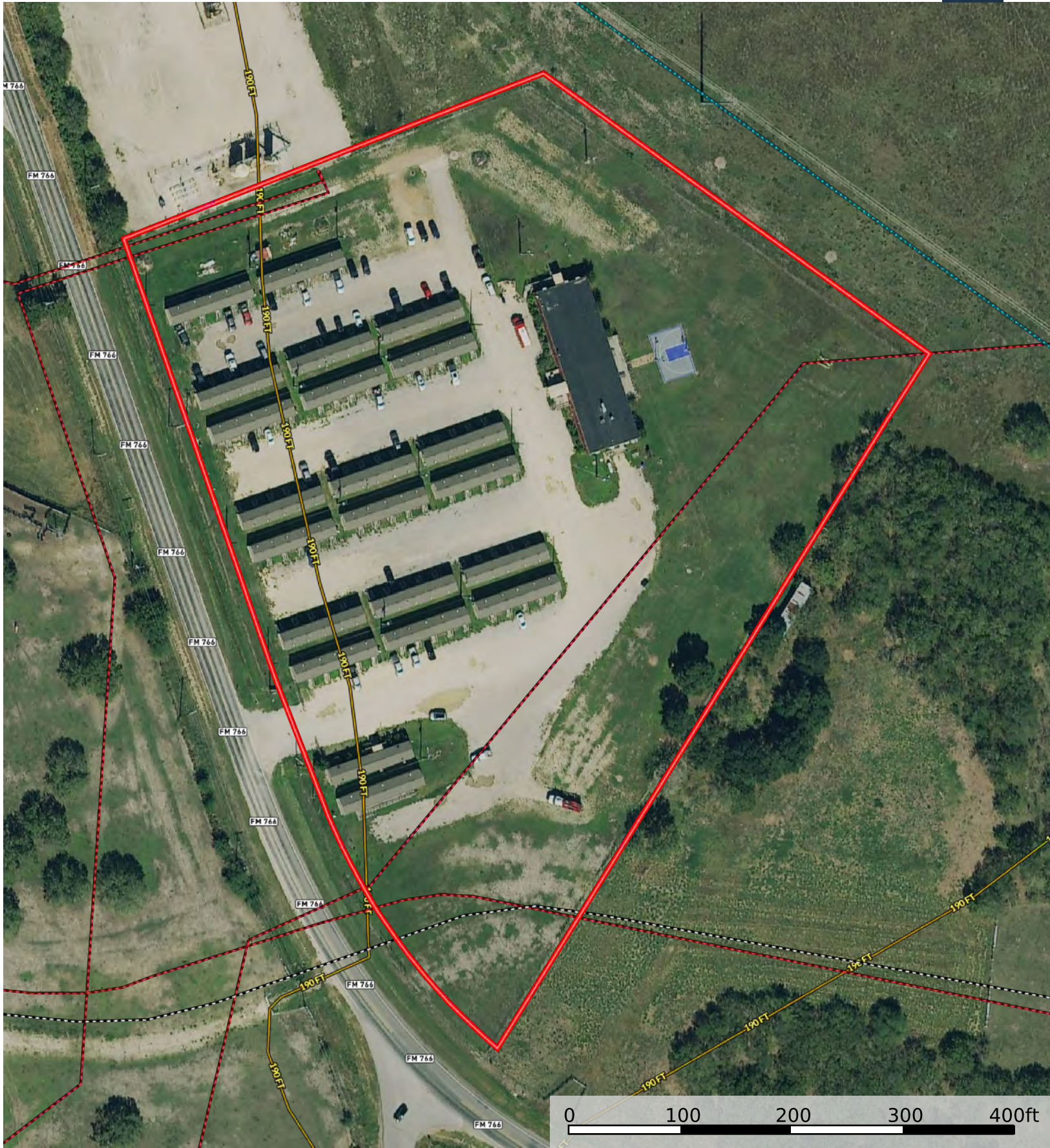
**(361) 212-2892**





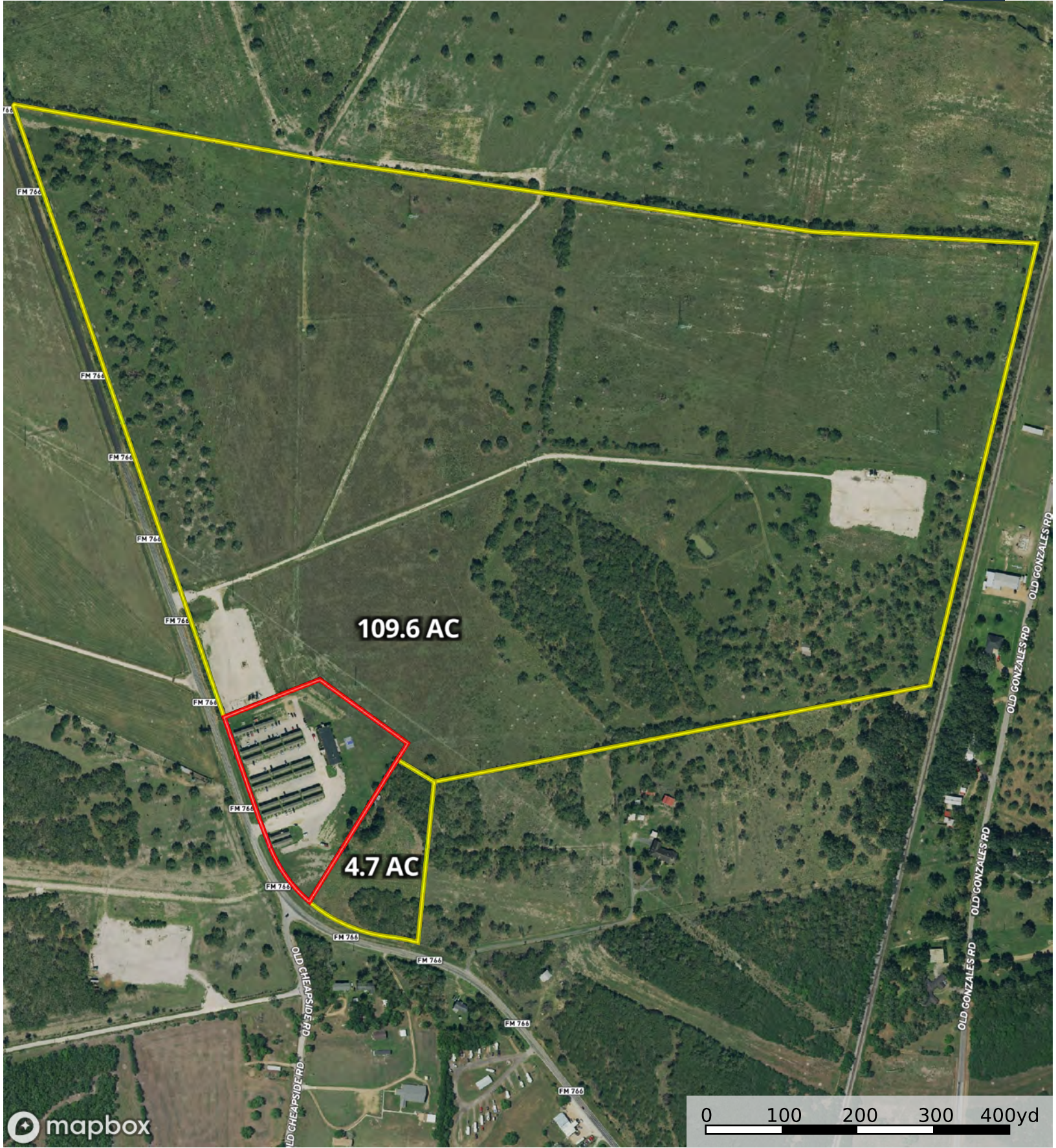
 Boundary





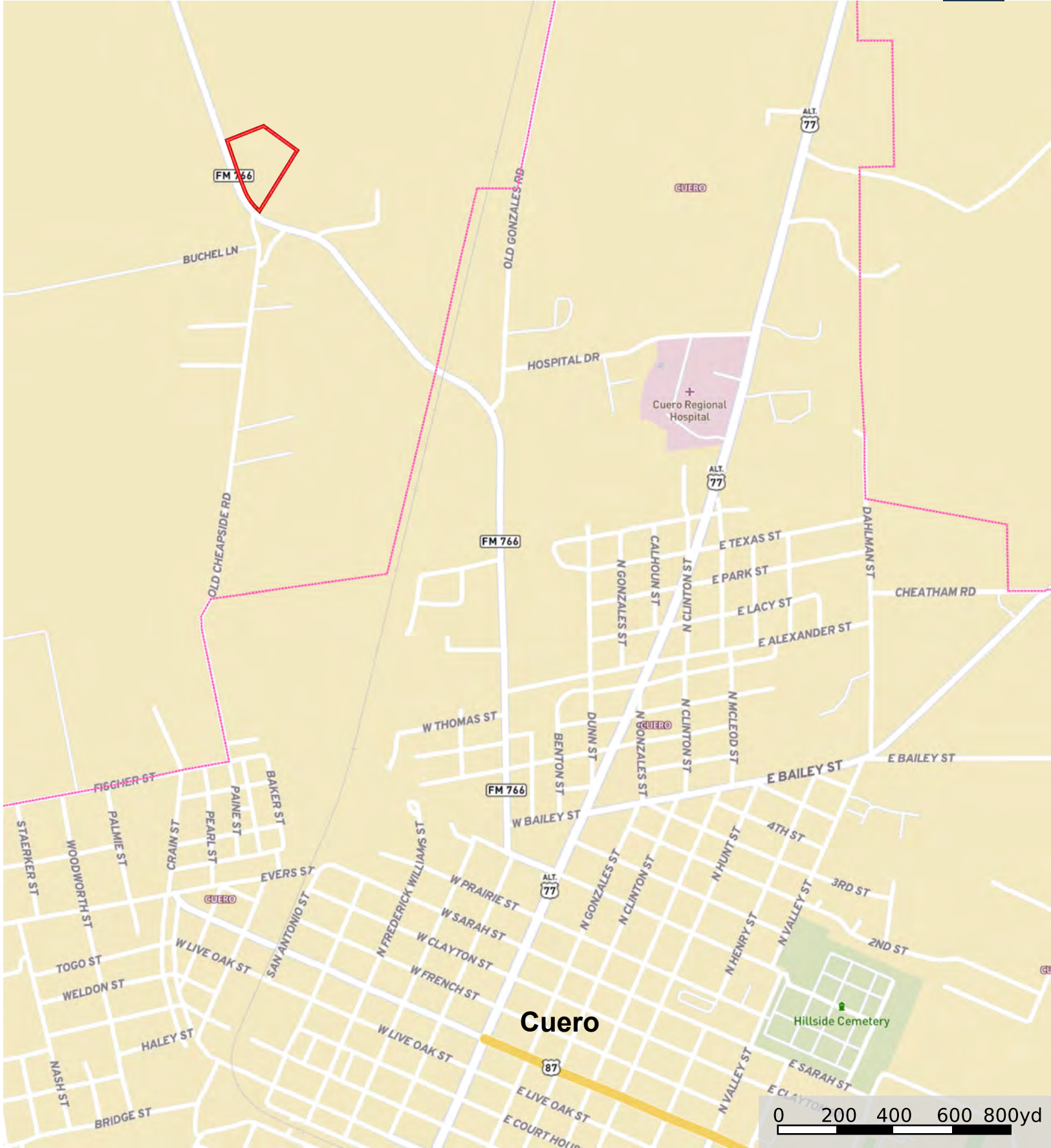
Boundary    Crude Oil    Natural Gas    Other    NOT AVAILABLE    Voltage 0 - 99 KV    Voltage 100 - 161 KV    Voltage 220 - 287 KV    Voltage 345 KV    Voltage 500 KV





Neighbor Boundary





Boundary