

DATED
884. (Parcel "A")
APR. 5.

WAS SURVEYED
REPORT AND
LECT ALL
RT.
THE FUTURE
PART OF THIS

CHARLES D. & CAROLYN R.
DICKERSON
D.B. 279, PG. 316
PLAT BK. 5, PG. 12

CHESAPEAKE FOREST
COMPANY
PRODUCTS
D.B. 260 PG. 686
PLAT: D.B. 69, PG. 58
"SCOTT TRACT"

MEREDITH HELM
D.B. 190, PG. 85
PLAT: D.B. 171, PG. 611

"C"
2.89 ACRES

"B"
5.95 ACRES

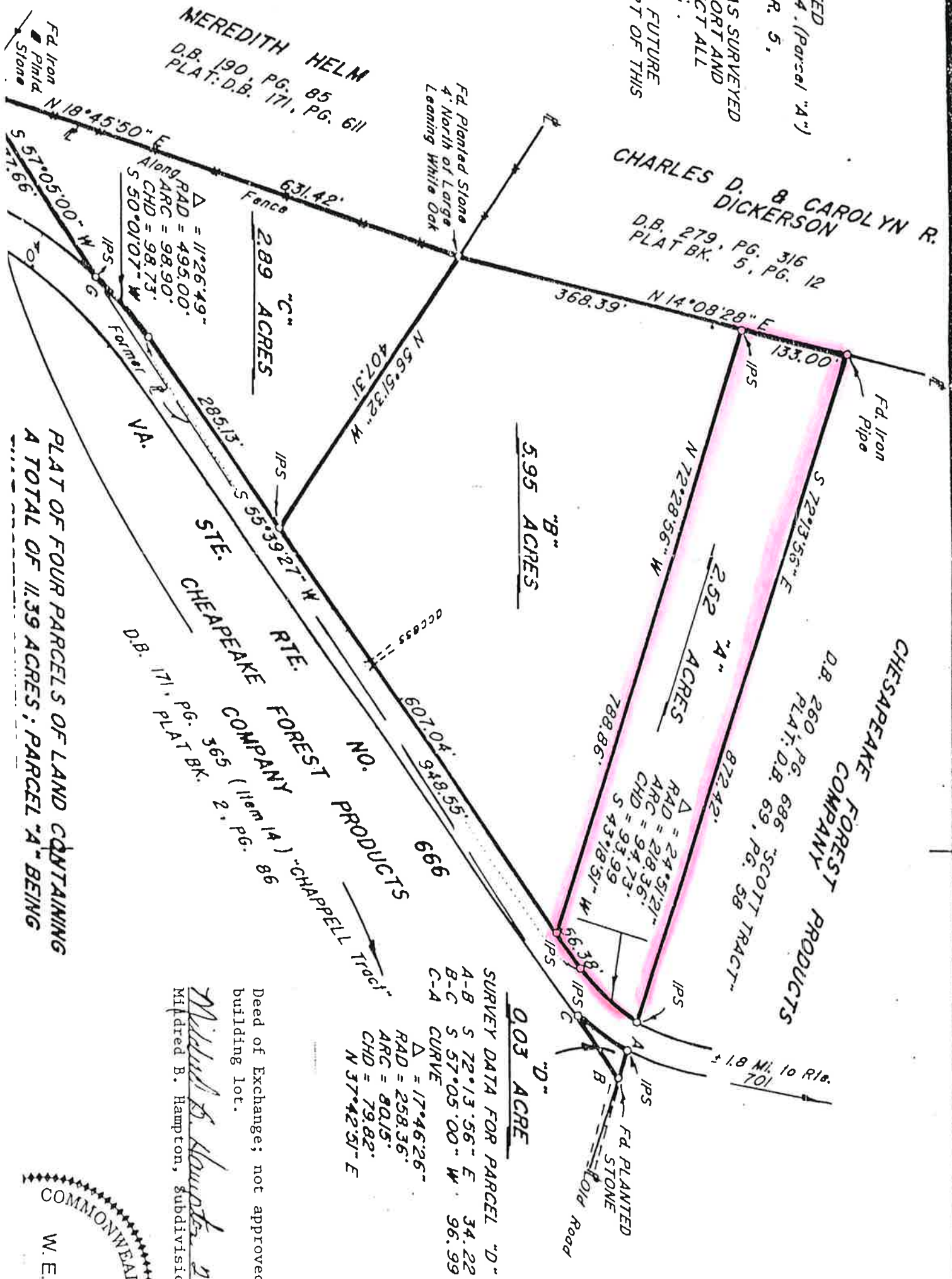
"A"
2.52 ACRES

"D"
0.03 ACRE

SURVEY DATA FOR PARCEL "D"
A-B S 72°13'56" E 34.22'
B-C S 57°05'00" W 96.99'
C-A CURVE
Δ = 17°46'26"
RAD = 258.36'
ARC = 80.15'
CHD = 79.82'
N 37°42'31" E

Deed of Exchange; not approved
building lot.
Mildred B. Hampton
Mildred B. Hampton, Subdivisio

PLAT OF FOUR PARCELS OF LAND CONTAINING
A TOTAL OF 11.39 ACRES; PARCEL "A" BEING



COMMONWEALTH
W. E.