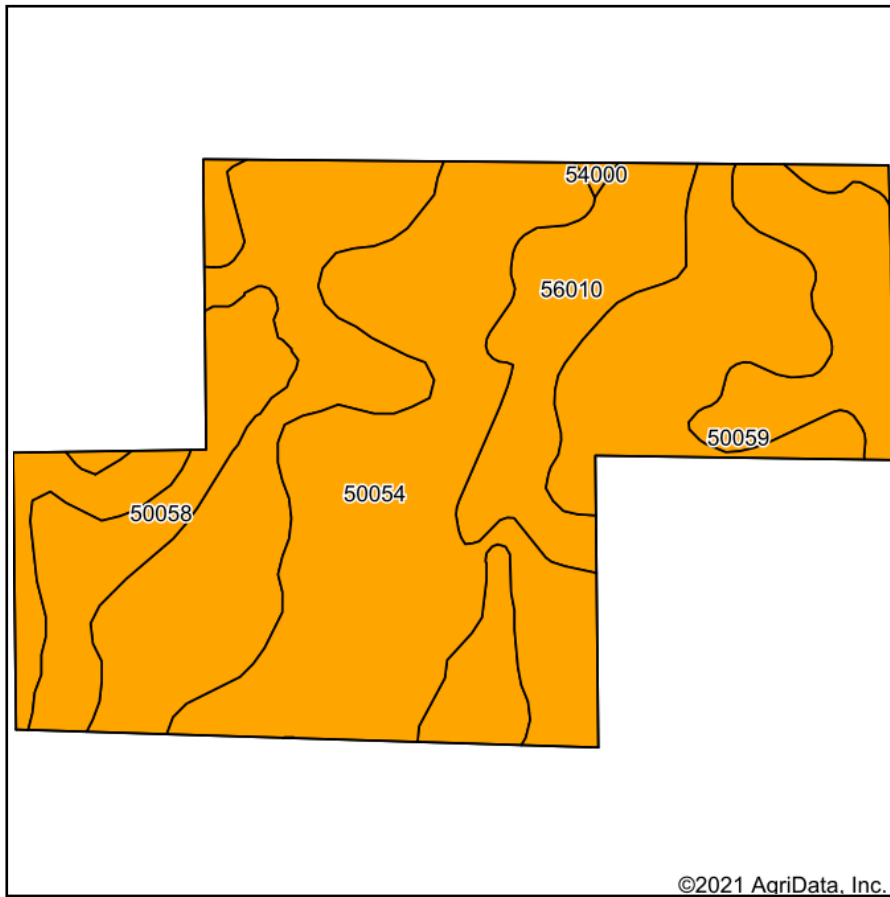
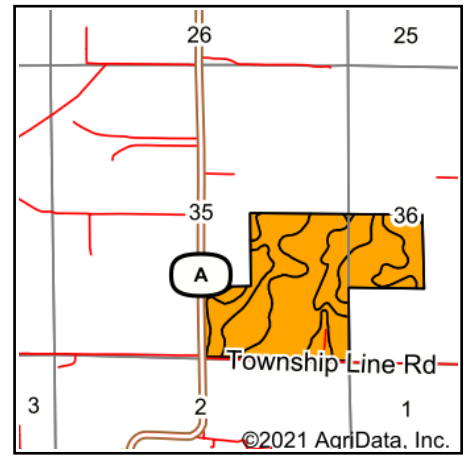


Soils Map



Soils data provided by USDA and NRCS.



State: **Missouri**
 County: **Warren**
 Location: **35-48N-3W**
 Township: **Camp Branch**
 Acres: **173.45**
 Date: **10/21/2021**

Maps Provided By:

 CUSTOMIZED ONLINE MAPPING
 © AgriData, Inc. 2021 www.AgriDataInc.com



Area Symbol: MO219, Soil Area Version: 20

Code	Soil Description	Acres	Percent of field	Non-Irr Class Legend	Non-Irr Class *c
50054	Armster silt loam, 2 to 7 percent slopes	80.62	46.5%		IIIe
50059	Mexico silt loam, 1 to 4 percent slopes, eroded	59.58	34.3%		IIIe
56010	Belknap silt loam, 0 to 2 percent slopes, frequently flooded	18.20	10.5%		IIIw
50058	Mexico silt loam, 0 to 2 percent slopes	14.71	8.5%		IIIw
54000	Chariton silt loam, 0 to 2 percent slopes, rarely flooded	0.34	0.2%		IIIw
Weighted Average					3.00

*c: Using Capabilities Class Dominant Condition Aggregation Method
 Soils data provided by USDA and NRCS.