

# LANDX

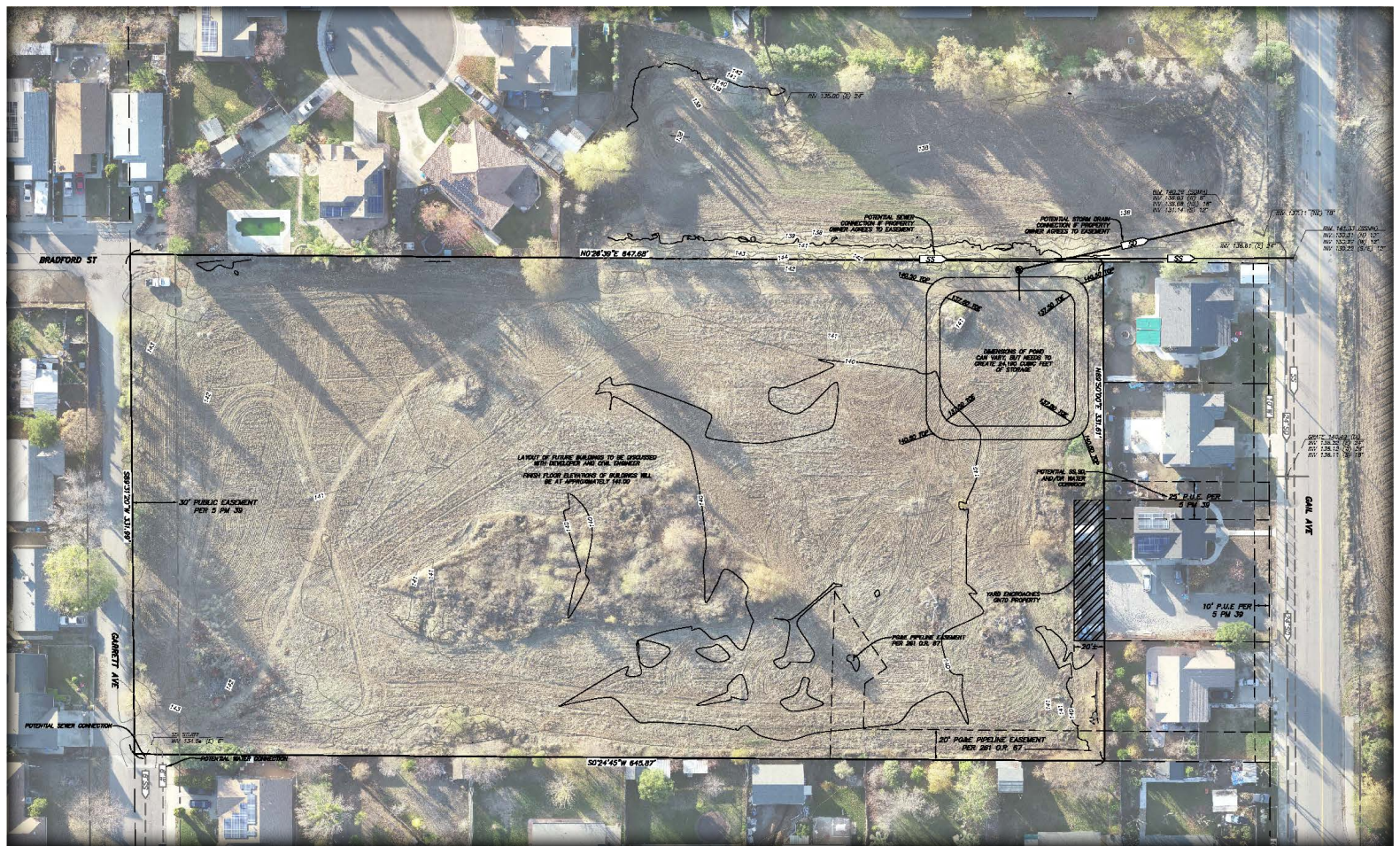
## REAL ESTATE

HUNTING | FARM | RANCH

+/- 4.93 ACRES  
GARRETT AVE. - ARBUCKLE, CA.

CONTACT

BRAD HULBERT  
BRAD@LANDXINC.COM  
530.848.3314  
DRE#01979855  
LANDXINC.COM



# SOILS MAP



## MAP LEGEND

### Area of Interest (AOI)

Area of Interest (AOI)

### Soils

#### Soil Rating Polygons

- Capability Class - I
- Capability Class - II
- Capability Class - III
- Capability Class - IV
- Capability Class - V
- Capability Class - VI
- Capability Class - VII
- Capability Class - VIII
- Not rated or not available

#### Soil Rating Lines

- Capability Class - I
- Capability Class - II
- Capability Class - III
- Capability Class - IV
- Capability Class - V
- Capability Class - VI
- Capability Class - VII
- Capability Class - VIII
- Not rated or not available

#### Soil Rating Points

- Capability Class - I
- Capability Class - II

- Capability Class - III
- Capability Class - IV
- Capability Class - V
- Capability Class - VI
- Capability Class - VII
- Capability Class - VIII
- Not rated or not available

### Water Features

Streams and Canals

### Transportation

- Rails
- Interstate Highways
- US Routes
- Major Roads
- Local Roads

### Background

Aerial Photography

## Irrigated Capability Class

Map unit symbol	Map unit name	Rating	Acres in AOI	Percent of AOI
112	Westfan loam, 0 to 2 percent slopes	1	4.5	100.0%
<b>Totals for Area of Interest</b>			<b>4.5</b>	<b>100.0%</b>

Irrigated Capability Class—Colusa County, California

SIMA Arbuckle LLC

*Tie-break Rule: Higher*

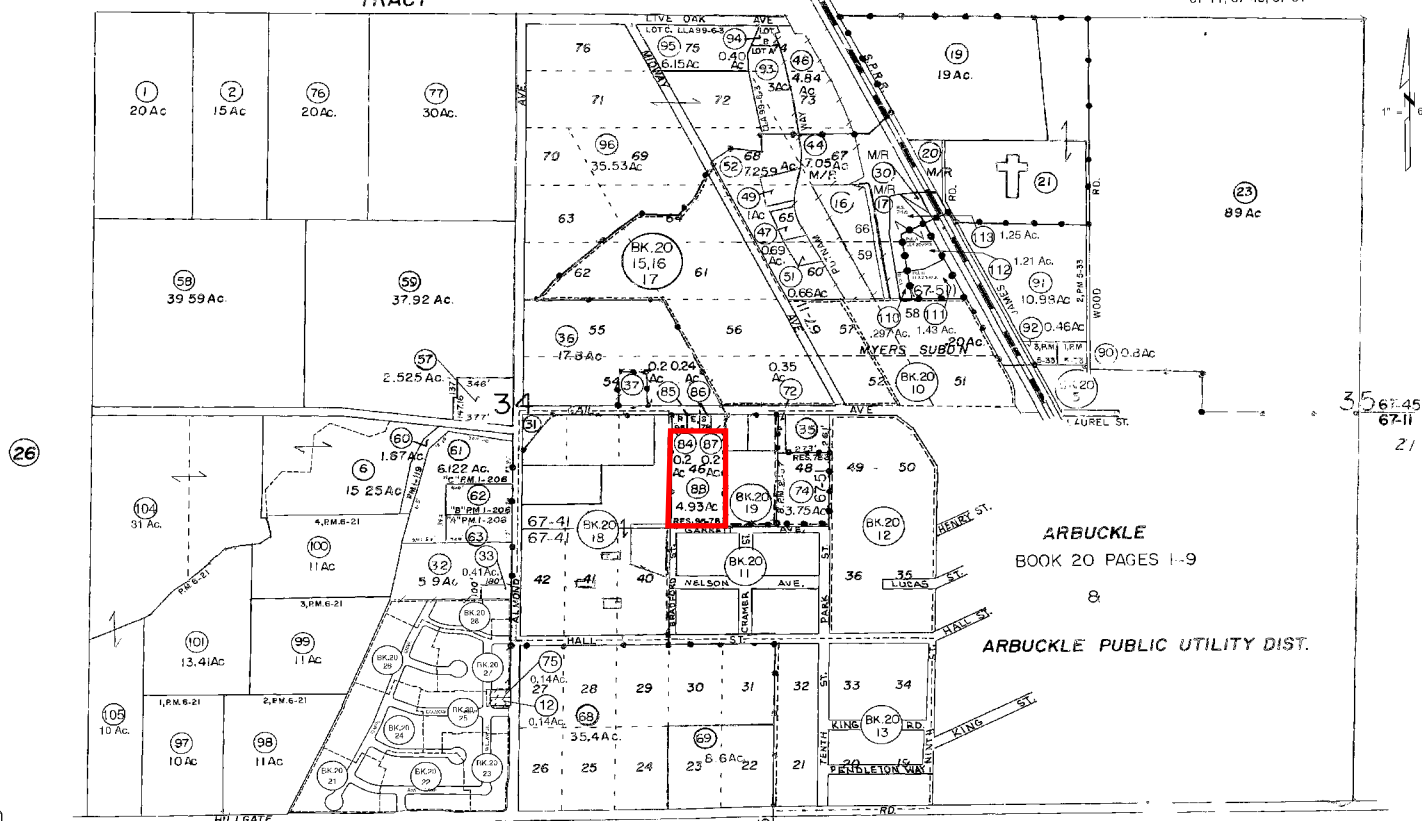
# APN MAP & LOCATION

POR. HOERNLEIN T. 14 N, R. 2 W, M.D.B. & M. TRACT

CAUTION - These Maps ARE NOT to be used for legal descriptions.

Tax Area Code 67-11, 67-45, 67-51

18-28

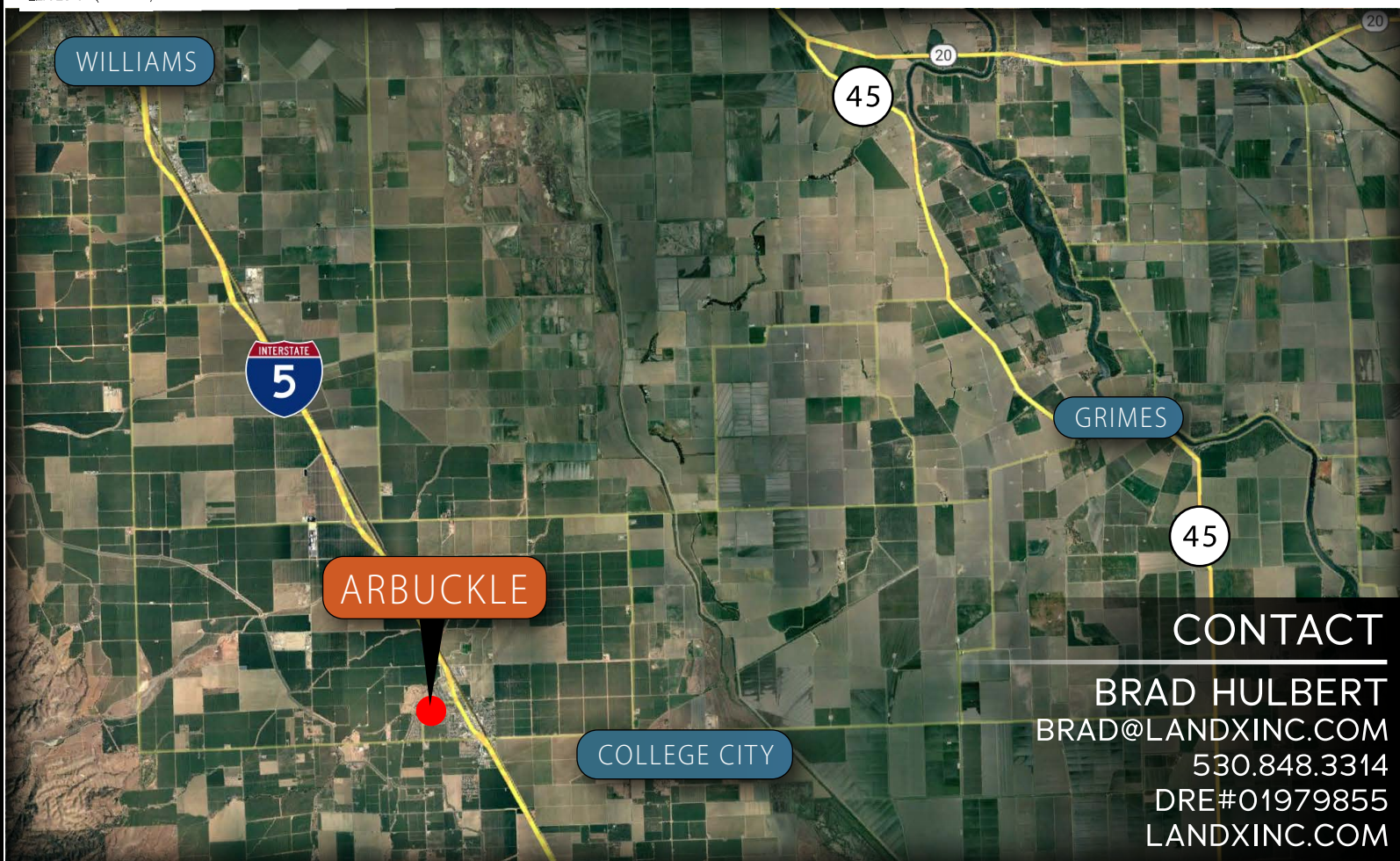


Deed (2015-2387)  
L.L.A 99-6-3(99-2845)  
RES. 95-78(95-003385)  
P.M. BK. 5, PG. 33  
P.M. BK. 6, PG. 21  
C.O.C 2019-2315,  
LLA 18-5-3  
LLA 20-14 (20-2206)

CROSSCREEK ESTATES UNIT 1 SUBD'N BK. 1, PG. 40  
**Hoernlein Add'n To Reddington Ranch, R.S. Bk. 1 Pg. 44**  
COOPER'S ANNEXATION (RES. 78-3: P.M. BK. 5, PG. 39  
P.M. BK. 2, PG. 67 P.M. BK. 4, PG. 93 R.S. Bk. 7 Pg. 125

Assessor's Map Bk. 18 Pg. 28  
County of Colusa, Calif.  
2020

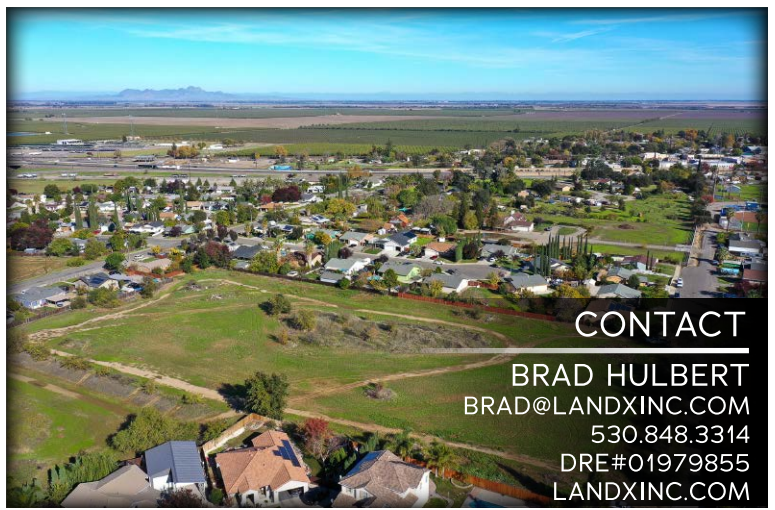
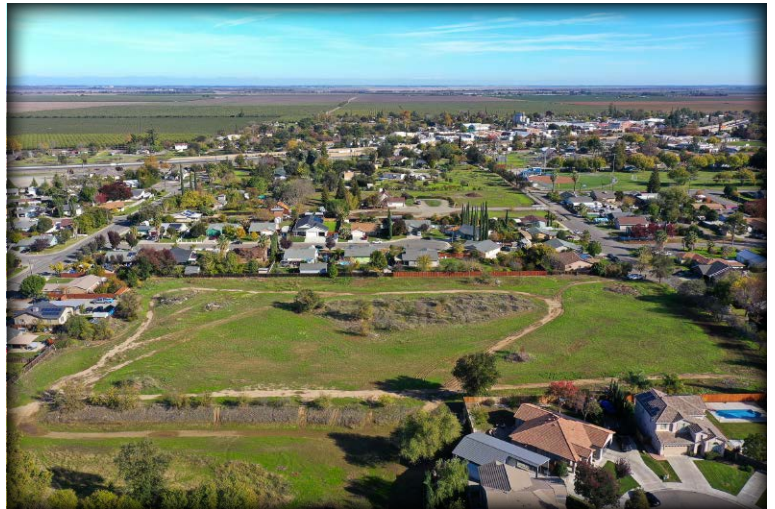
NOTE - Assessor's Block Numbers Shown in Ellipses  
Assessor's Parcel Numbers Shown in Circles



## CONTACT

BRAD HULBERT  
BRAD@LANDXINC.COM  
530.848.3314  
DRE#01979855  
LANDXINC.COM

# GARRETT AVE. PHOTOS



**CONTACT**

**BRAD HULBERT**  
[BRAD@LANDXINC.COM](mailto:BRAD@LANDXINC.COM)  
530.848.3314  
DRE#01979855  
[LANDXINC.COM](http://LANDXINC.COM)