

RE: Sale of TBD Elm Creek Rd Medina, TX 78055
SELLER(S): Patricia Louise Harvey
BUYER(S):

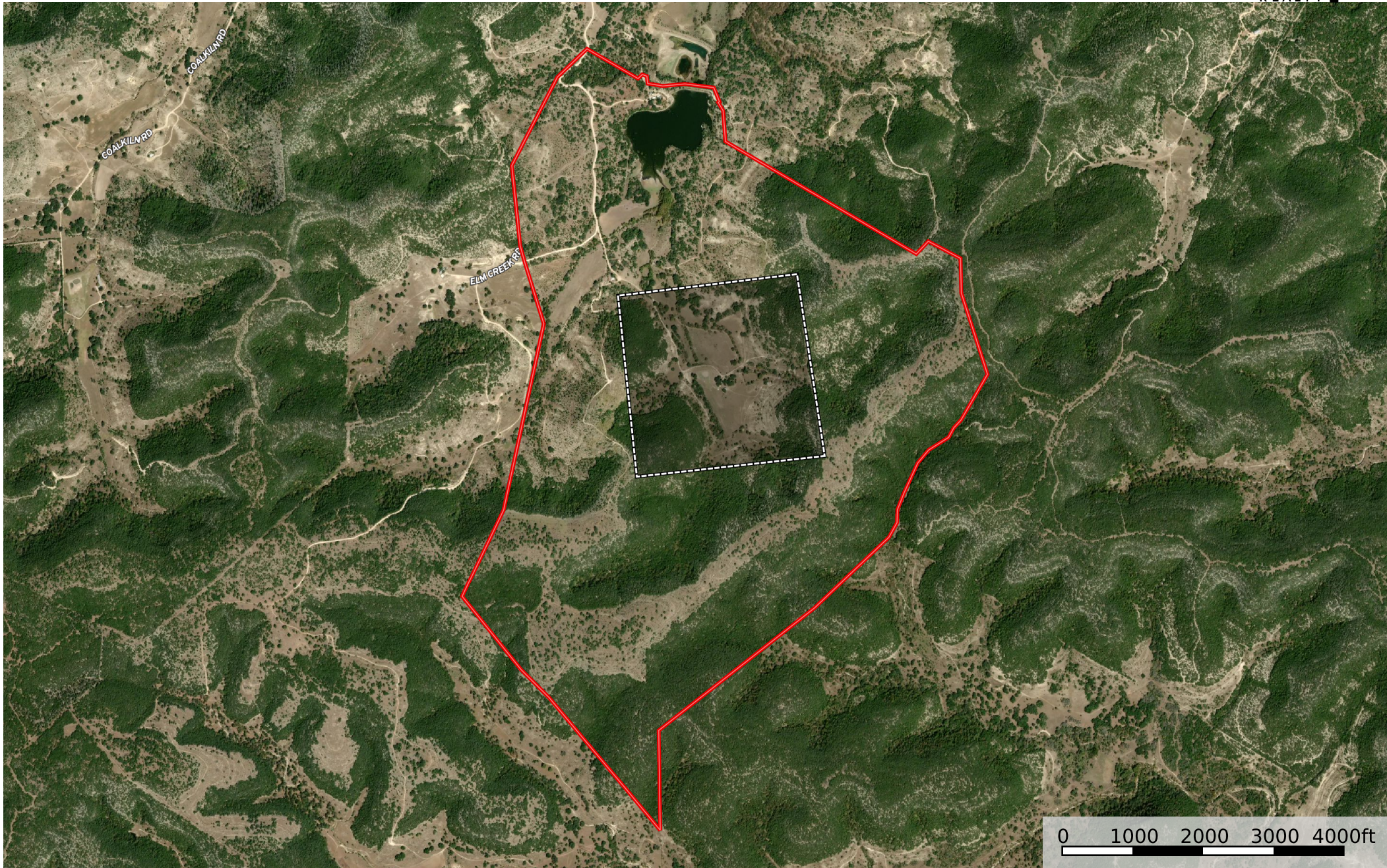
EXHIBIT "A"

Total acreage (approximately 881.41 acres more or less) to be determined by a new survey.

LEGAL DESCRIPTION(S) (Per Bandera County Appraisal District):

1. ABST 2528 E T STOVALL SVY 2.5 TR 1 52.4 ACRES (save and except approx. 7.57 acres = 44.83)
2. ABST 1250 W G TODD SVY 15.2 TR 1 11.2 ACRES (save and except approx. 1.5 acres = 9.7)
3. ABST 1262 J S AKIN SVY 53.6 TR 2 160 ACRES
4. ABST 1279 G C & S F RR CO SVY 313 TR 2 98 ACRES
5. ABST 1529 H H DIAL SVY 56 TR 1 97.7 ACRES (save and except approx. 3 acres = 94.7)
6. ABST 1561 M RENSHAW SVY 2314.25 TR 2 75.68 ACRES
7. ABST 2470 E T STOVALL SVY 26.25 TR 1 152.7 ACRES (save and except approx. 5 acres = 147.7)
8. ABST 918 G C & S F RR SVY 55 TR 6 25.3 ACRES
9. ABST 1249 W G TODD SVY 15.1 TR 1 6.70 ACRES (save and except approx. .57 acre = 6.13)
10. ABST 625 J S AKIN SVY 53.1 TR 2 158.7 ACRES (save and except approx. 25.26 acres = 133.44)
11. ABST 355 W A SHEPPARD SVY 53.2 TR 2 160 ACRES (save and except approx. 155.76 acres = 4.24)
12. ABST 36 JAMES BLAIR SVY 53 TR 27 264.1 ACRES (save and except approx. 245.85 acres = 18.25)
13. Unidentified parcel on E side of ranch will be included totaling approx. 63.44 acres.
14. ABST 355 W A SHEPPARD SVY 53.2 TR 2 **IMP ONLY ON 164972** **PFS1182510/11**

See MapRight map (attached Exhibit "B") for reference of approximate property lines.



 Boundary  Not for Sale

Exhibit "C"

Items that will not convey with the sale of
2751 Elm Creek Rd Medina, TX 78055:

1. Morgan building located near main house.
2. All personal property in main house and guest house.
3. Washer and dryer in main house.
4. Freezer and refrigerator in main house.
5. Stove from guest house.
6. Hunter's will take all personal property from the cabin.
7. Portable RV barn and all storage containers near the hunter's cabin.
8. Washer and dryer from guest house next to main house.
9. Outdoor refrigerator underneath the pavilion.
10. Personal property underneath the pavilion.
11. Grills and bbq pits underneath the pavilion.