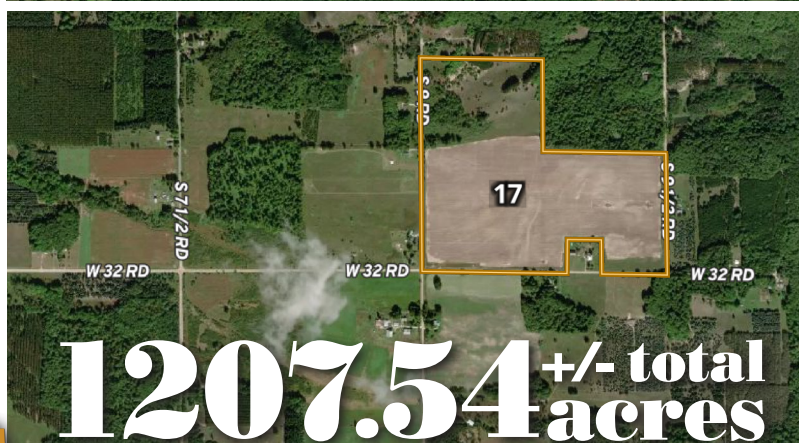
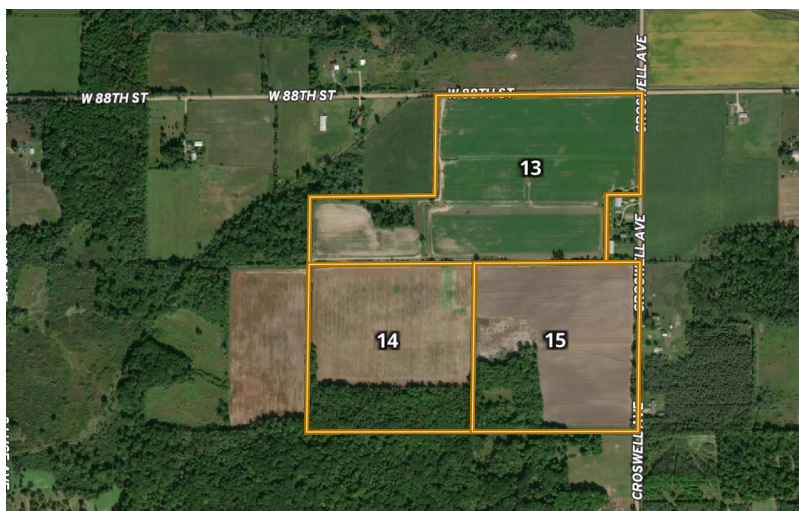
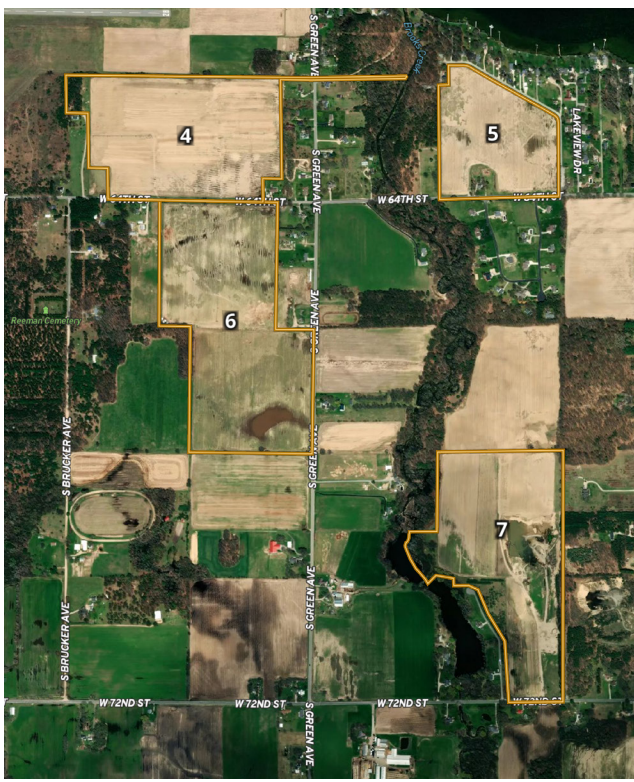


# PRIME VEGETABLE FARMLAND



**1207.54<sup>±</sup> total acres**

# FOR SALE



**Tom Bosserd**  
734.646.7339  
thomasb@halderman.com



**Colten Yager**  
620.214.1915  
colteny@halderman.com



**HALDERMAN**  
REAL ESTATE & FARM MANAGEMENT

800.424.2324 | halderman.com





1207.54<sup>+/-</sup> ACRES • PRIME VEGETABLE FARMLAND • HOME  
(2) 4,000+ HOG FACILITIES IN MICHIGAN



Visit [halderman.com/property-listings](https://halderman.com/property-listings) for additional photos and details.

**PARCEL 1: 32<sup>+/-</sup> Acres**  
27.78<sup>+/-</sup> Tillable | Hog Barn  
**BEAVER TWP, NEWAYGO CO**

**PARCEL 2: 191.42<sup>+/-</sup> Acres**  
157.29<sup>+/-</sup> Tillable | 2.61<sup>+/-</sup> Woods  
\*128.56<sup>+/-</sup> Tillable Acres are Irrigated

**PARCEL 3: 66.25<sup>+/-</sup> Acres**  
35.2<sup>+/-</sup> Tillable | 31.05<sup>+/-</sup> Other

**PARCEL 4: 62<sup>+/-</sup> Acres**  
55.81<sup>+/-</sup> Tillable | 1.5<sup>+/-</sup> Woods

**PARCEL 5: 33<sup>+/-</sup> Acres**  
29.81<sup>+/-</sup> Tillable/Irrigated

**PARCEL 6: 76.53<sup>+/-</sup> Acres**  
71.14<sup>+/-</sup> Tillable  
\*29.81<sup>+/-</sup> Tillable Acres are Irrigated

**PARCEL 7: 65.5<sup>+/-</sup> Acres**  
36.97<sup>+/-</sup> Tillable | 2.8<sup>+/-</sup> Woods  
\*62.03<sup>+/-</sup> Tillable/Other Acres are Irrigated

**PARCEL 8: 47.5<sup>+/-</sup> Acres**  
37.02<sup>+/-</sup> Tillable | 10.21<sup>+/-</sup> Woods  
\*22.04<sup>+/-</sup> Tillable Acres are Irrigated

**PARCEL 9: 20<sup>+/-</sup> Acres**  
17.29<sup>+/-</sup> Tillable | 1.53<sup>+/-</sup> Woods  
\*37.02<sup>+/-</sup> Tillable Acres are Irrigated

**PARCEL 10: 24.9<sup>+/-</sup> Acres**  
19.67<sup>+/-</sup> Tillable | 3.56<sup>+/-</sup> Woods  
\*17.29<sup>+/-</sup> Tillable Acres are Irrigated

**PARCEL 11: 40<sup>+/-</sup> Acres**  
34.86<sup>+/-</sup> Tillable | 2.84<sup>+/-</sup> Woods  
\*31.69<sup>+/-</sup> Tillable Acres are Irrigated

**PARCEL 12: 221.78<sup>+/-</sup> Acres**  
148.14<sup>+/-</sup> Tillable/Irrigated  
55.35<sup>+/-</sup> Woods | Hog Barn

**SHERIDAN TWP, NEWAYGO CO**

**PARCEL 13: 58.66<sup>+/-</sup> Acres**  
51.27<sup>+/-</sup> Tillable | 1.69<sup>+/-</sup> Woods  
\*33.88<sup>+/-</sup> Tillable/Other Acres are Irrigated

**PARCEL 14: 40<sup>+/-</sup> Acres**  
27.98<sup>+/-</sup> Tillable/Irrigated  
11.29<sup>+/-</sup> Woods

**PARCEL 15: 40<sup>+/-</sup> Acres**  
30<sup>+/-</sup> Tillable | 8.28<sup>+/-</sup> Woods  
\*26.25<sup>+/-</sup> Tillable Acres are Irrigated

**GARFIELD TWP, NEWAYGO CO**

**PARCEL 16: 80<sup>+/-</sup> Acres**  
73.82<sup>+/-</sup> Tillable  
\*65.76<sup>+/-</sup> Tillable Acres are Irrigated

**PARCEL 17: 108<sup>+/-</sup> Acres**  
71.72<sup>+/-</sup> Tillable | 9.35<sup>+/-</sup> Woods  
\*57.7<sup>+/-</sup> Tillable/Other Acres are Irrigated

**SLAGLE TWP, WEXFORD CO**

**LISTING PRICE**  
\$10,000,000

**PROPERTY LOCATION**  
Tracts 1 & 2:  
Northeast of Hesperia

Tracts 3-15:  
South of Fremont and  
west of Newaygo

Tracts 16 & 17:  
South of Mesick and  
west of Cadillac

**(2) 4,000+  
HOG FACILITIES**  
(PARCEL 1 & 12)

**HOME** (PARCEL 1)

**ZONING**  
Agricultural

**SOIL TYPES**  
Mostly Sand and  
Loamy Sand

**SCHOOL DISTRICT**  
Tracts 1 & 2:  
Hesperia School District

Tracts 3-15:  
Fremont School District

Tracts 16 & 17:  
Mesick School District

**TOPOGRAPHY**  
Level to Gently Rolling

**FARM: K Farm Holdings, LLC**  
**HLS# TLB-12727 (21)**

**DOWNLOAD THE  
HALDERMAN APP**

Instant directions to  
property tracts and  
details on this listing.

