



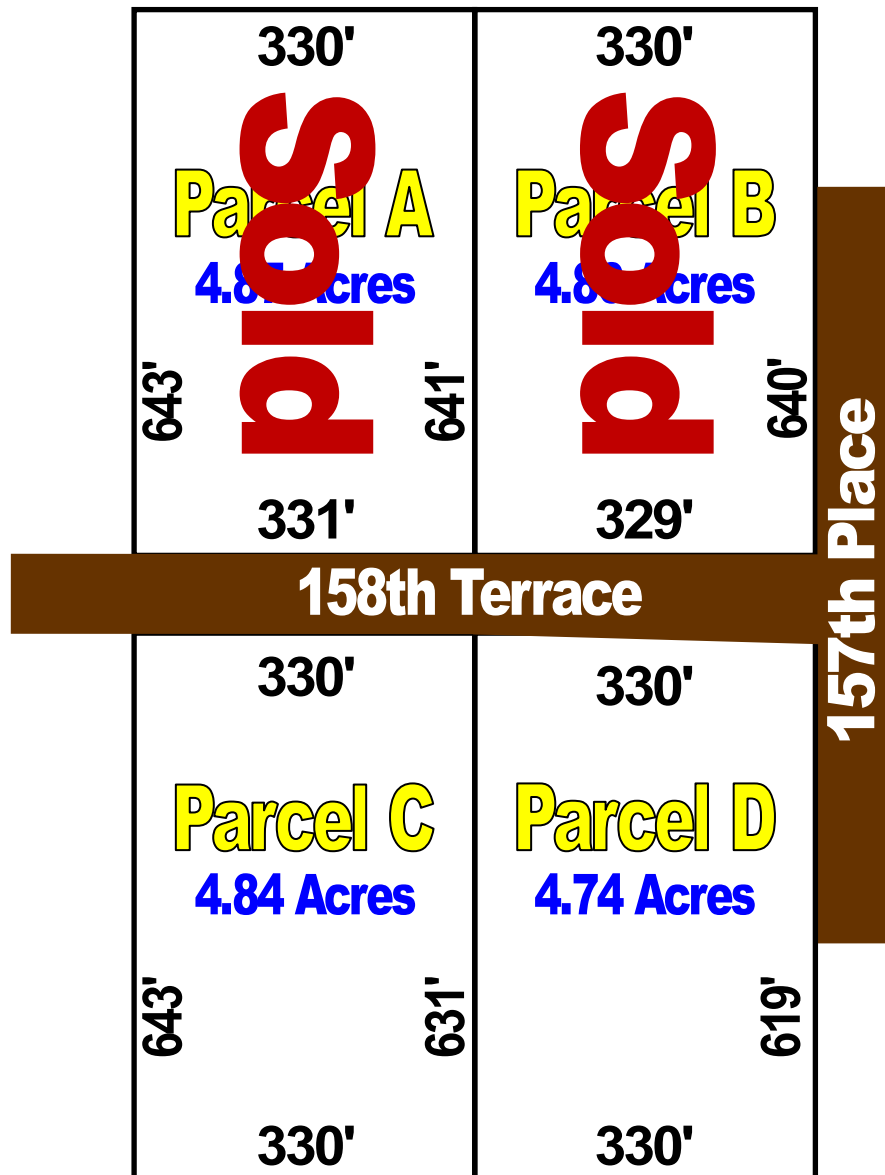
# Jim Jean Real Estate



1-800-722-5326

4131 NW 28<sup>th</sup> Lane, Suite 1, Gainesville, FL 32606 ♦ www.JimJean.com ♦ Cell: 352-339-4487

## Harrison Estates Sales Plat



\*Refer to recorded plat for survey details

**Automatic, Non-Qualifying** Seller Financing is available with **NO** Pre-Payment Penalties

Estate	Acreage	Sales Price	Down	Monthly	Rate	Term
A	4.87	\$59,995	\$5,995	\$450	8.90%	25 Years
B	4.86	\$59,995	\$5,995	\$450	8.90%	25 Years
C	4.84	\$59,995	\$5,995	\$450	8.90%	25 Years
D	4.74	\$59,995	\$5,995	\$450	8.90%	25 Years