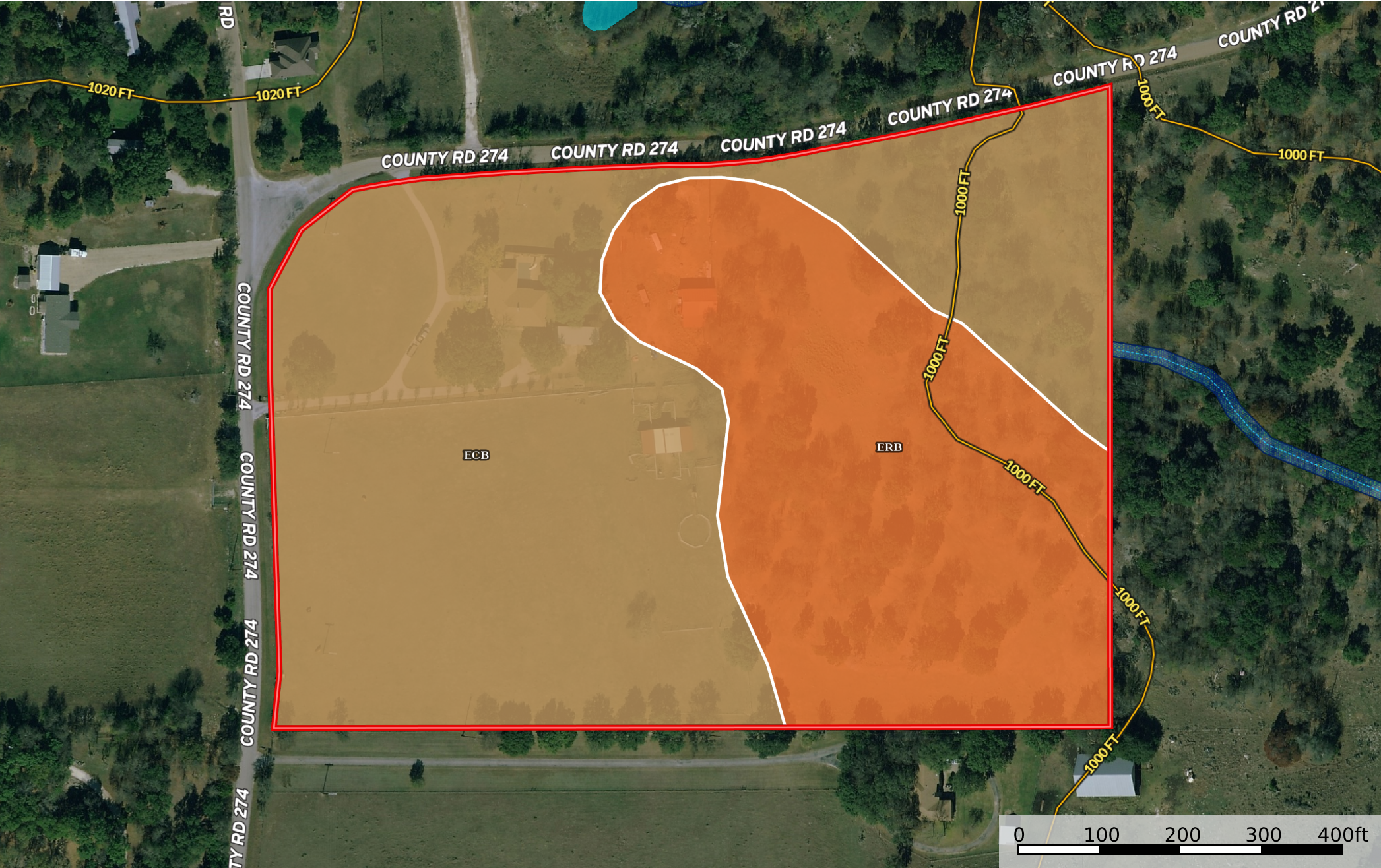


Dildine - 630 CR 274  
Coryell County, Texas, 16.7 AC +/-



## Boundary 16.61 ac

SOIL CODE	SOIL DESCRIPTION	ACRES	%	CPI	NCCPI	CAP
EcB	Eckrant very cobbly silty clay, 1 to 5 percent slopes, very stony	10.33	62.19	0	13	4s
ErB	Eckrant-Rock outcrop complex, 1 to 8 percent slopes, extremely stony	6.28	37.81	0	4	7s
TOTALS		16.61(*)	100%	-	9.6	5.13









(\*) Total acres may differ in the second decimal compared to the sum of each acreage soil. This is due to a round error because we only show the acres of each soil with two decimal.

### Capability Legend

Increased Limitations and Hazards

Decreased Adaptability and Freedom of Choice Users

Land, Capability

								
	1	2	3	4	5	6	7	8
'Wild Life'	•	•	•	•	•	•	•	•
Forestry	•	•	•	•	•	•	•	
Limited	•	•	•	•	•	•	•	
Moderate	•	•	•	•	•	•		
Intense	•	•	•	•	•			
Limited	•	•	•	•				
Moderate	•	•	•					
Intense	•	•						
Very Intense	•							

### Grazing Cultivation

(c) climatic limitations (e) susceptibility to erosion

(s) soil limitations within the rooting zone (w) excess of water