



Purple Sage Ranch

115 Acres



Located in Val Verde County, Texas
Less than 25 minutes from Lake Amistad
Short drive to Devils River State Park
Good easy access, less than 5 miles off intersection of Hwy 337 and 277
Terrain is level to hilly

Wet weather creek running along the property
Great area for a variety of wildlife including axis, whitetail, blackbuck, aoudad, turkey, hogs, elk
Plenty of cover and vegetation consisting of sage, cedar, mesquite, persimmon, and guajillo
+/- 650 sq ft cabin, 20 ft Connex storage, skinning rack
Good trail system leading to 4 blinds, and 4 feeders
\$199,000 listing #187

Western Hill Country Realty

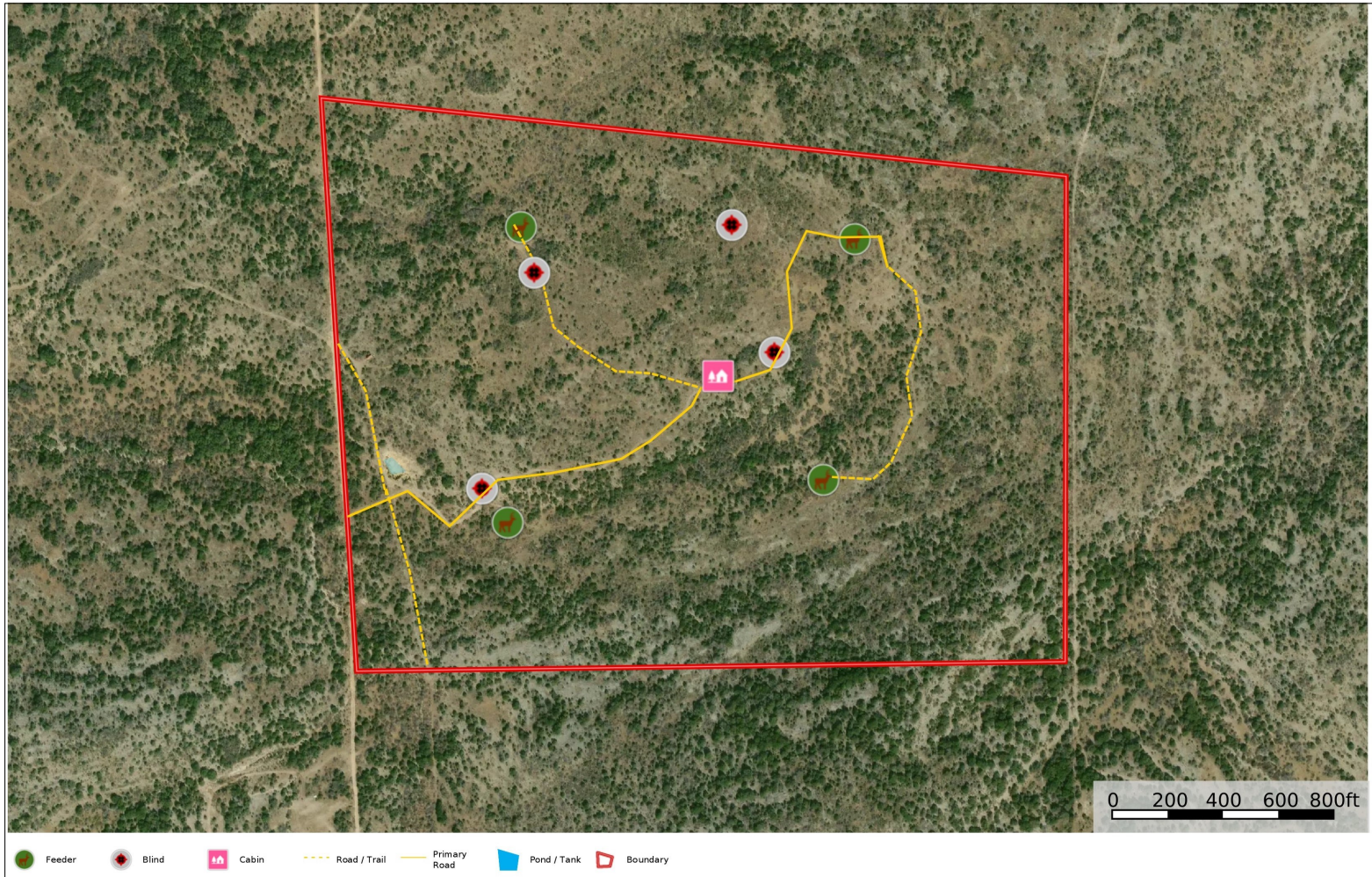
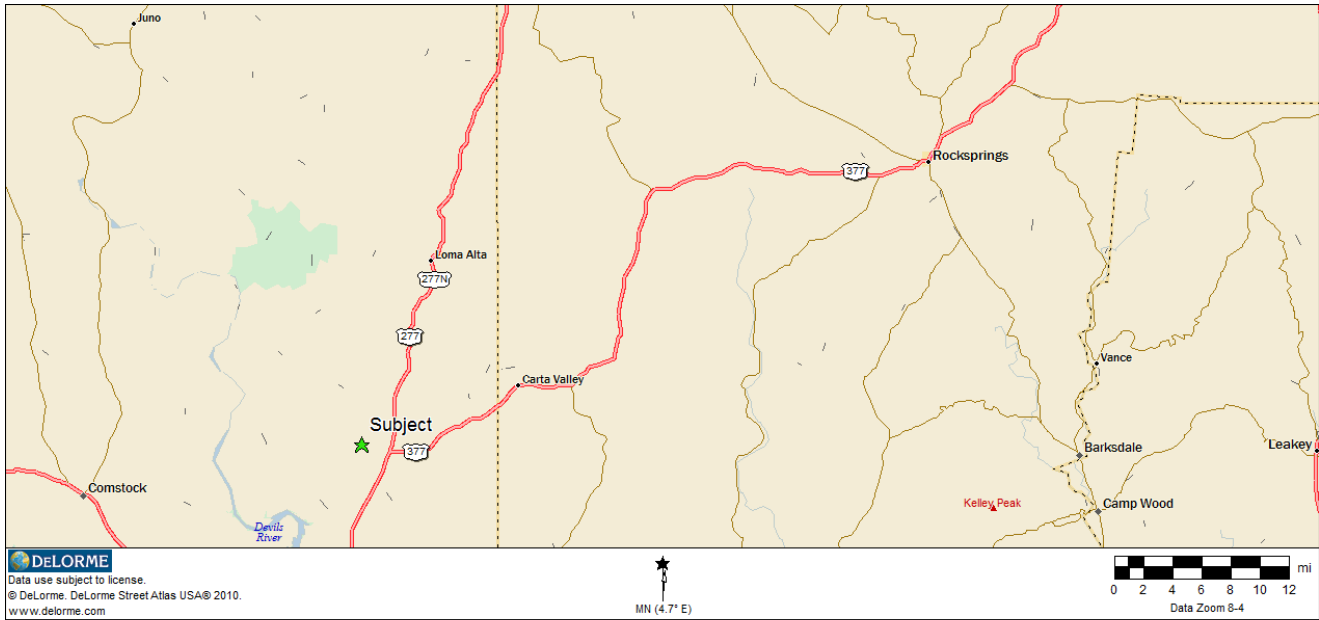
www.westernhillcountryrealty.com

info@westernhillcountryrealty.com

830-683-4435



Purple Sage Ranch 115 Acres



Western Hill Country Realty

www.westernhillcountryrealty.com

info@westernhillcountryrealty.com

830-683-4435



Purple Sage Ranch 115 Acres



Western Hill Country Realty

www.westernhillcountryrealty.com

info@westernhillcountryrealty.com

830-683-4435