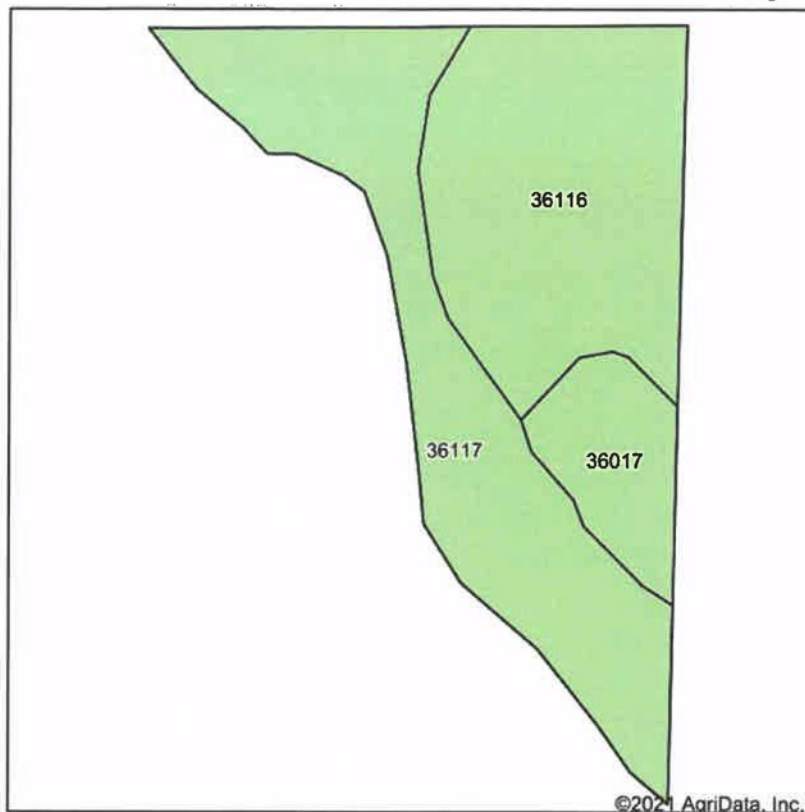
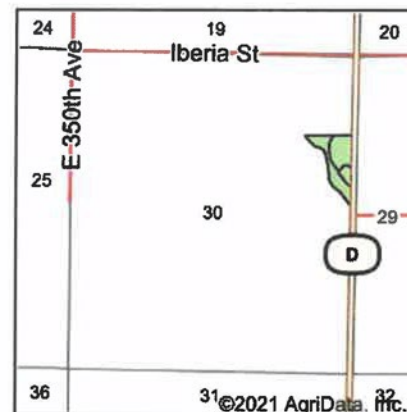


Soils Map



Soils data provided by USDA and NRCS.



State: **Missouri**
 County: **Mercer**
 Location: **30-64N-25W**
 Township: **Madison**
 Acres: **10.54**
 Date: **12/27/2021**

United
Country

NELSON REAL ESTATE

Maps Provided By:

 **surety**
 CUSTOMER ONLINE MAPPING

© AgriData, Inc. 2021

www.AgriDataInc.com



Area Symbol: MO129, Soil Area Version: 22

Code	Soil Description	Acres	Percent of field	Non-Irr Class *c
36117	Nodaway silt loam, heavy till, 0 to 2 percent slopes, occasionally flooded	4.82	45.7%	IIw
36116	Zook silty clay loam, heavy till, 0 to 2 percent slopes, occasionally flooded	4.47	42.4%	IIw
36017	Humeston silty clay loam, 0 to 2 percent slopes, occasionally flooded	1.25	11.9%	IIIw
Weighted Average				2.12

*c: Using Capabilities Class Dominant Condition Aggregation Method