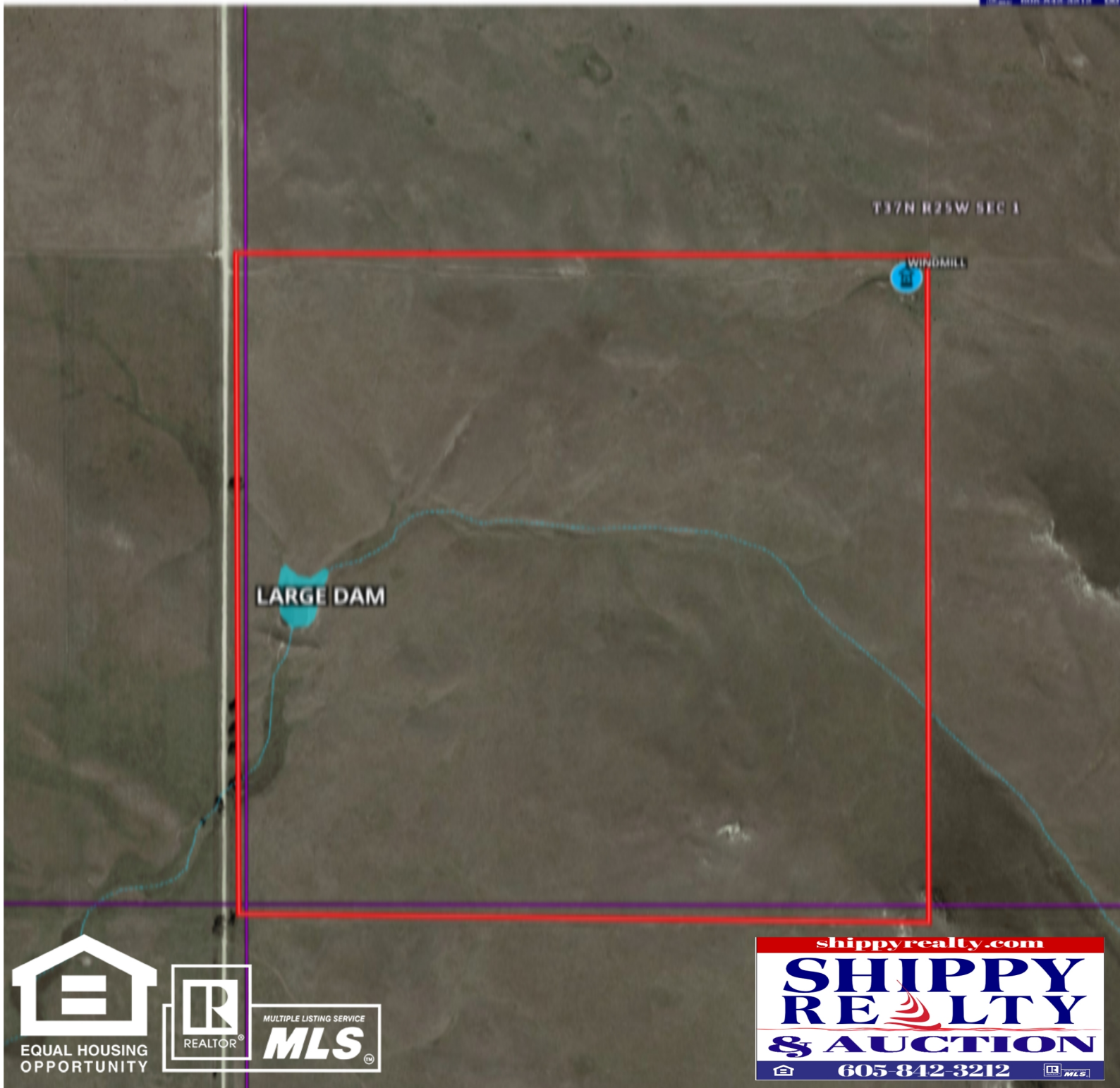


**SW 1-37-25 in Todd County**  
Todd County, South Dakota, 160 AC +/-



## 160 (+/-) Acres of Grazing Land, Eastern Todd Co, SD

FOR SALE: 1700 per acre

160 acres of grazing land with large dam and windmill with 30-foot cattle tank, good fence surrounding the quarter. Half mile from Tripp County. (SW1/4 of 1-37N-25W).