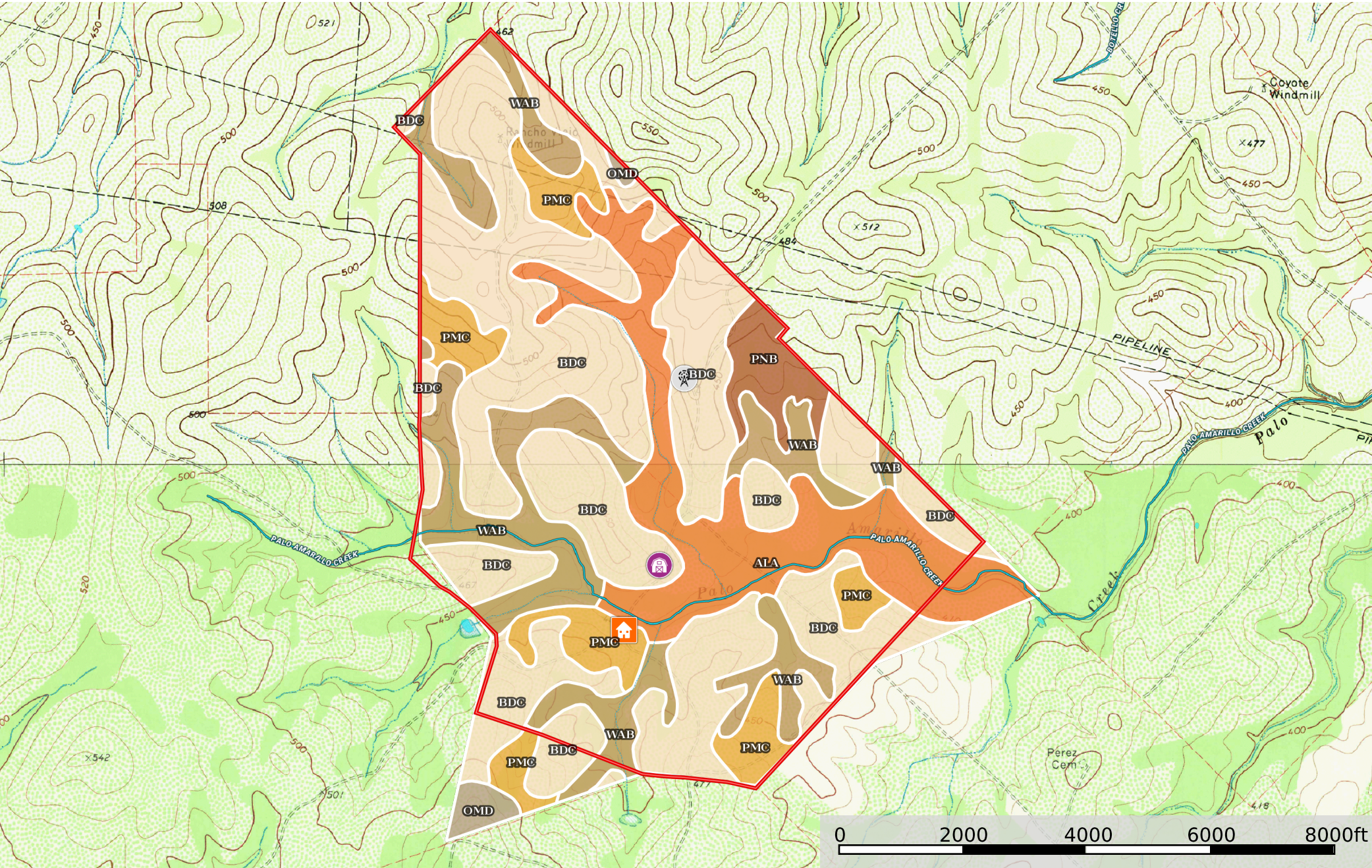


Old Gringos Ranch  
Texas, AC +/-



- Windmill
- Barn
- House
- Boundary
- Stream, Intermittent
- River/Creek
- Water Body



## Boundary 1606.27 ac

SOIL CODE	SOIL DESCRIPTION	ACRES	%	CPI	NCCPI	CAP
BdC	Benavides fine sandy loam, 2 to 5 percent slopes	822.28	51.19	0	41	3e
WaB	Weesatche fine sandy loam, dry, 1 to 3 percent slopes	285.11	17.75	0	49	2e
AlA	Alet sandy clay loam, 0 to 1 percent slopes, occasionally flooded	282.47	17.59	0	46	2e
PmC	Pernitas fine sandy loam, 1 to 5 percent slopes	148.94	9.27	0	43	3e
PnB	Pernitas sandy clay loam, 1 to 5 percent slopes	48.72	3.03	0	49	3e
OmD	Olmedo very gravelly sandy loam, 1 to 8 percent slopes	18.75	1.17	0	12	7s
TOTALS		1606.3(*)	100%	-	43.39	2.69









(\*) Total acres may differ in the second decimal compared to the sum of each acreage soil. This is due to a round error because we only show the acres of each soil with two decimal.

### Capability Legend

Increased Limitations and Hazards

Decreased Adaptability and Freedom of Choice Users

Land, Capability

								
	1	2	3	4	5	6	7	8
'Wild Life'	•	•	•	•	•	•	•	•
Forestry	•	•	•	•	•	•	•	
Limited	•	•	•	•	•	•	•	
Moderate	•	•	•	•	•	•		
Intense	•	•	•	•	•			
Limited	•	•	•	•				
Moderate	•	•	•					
Intense	•	•						
Very Intense	•							

### Grazing Cultivation

(c) climatic limitations (e) susceptibility to erosion

(s) soil limitations within the rooting zone (w) excess of water