

SE/4 OF SECTION NO. 30
T. & P. RR. CO. SURVEY
BLOCK "A", E.O.B.
ABSTRACT NO. 1345

NORTH OAK AVENUE (PAVED)

20.58 ACRES

APPROXIMATE LOCATION
OF FLOOD ZONE LIMITS
ZONE "A"

APPROX LOC
OF DITCH

OVERHEAD TRANSMISSION LINE

OVERHEAD ELECTRIC

OVERHEAD ELECTRIC

U.S. HIGHWAY 281

BOX CULVERT

PP & GUY

WATER METER

TP

GRAVEL DRIVE

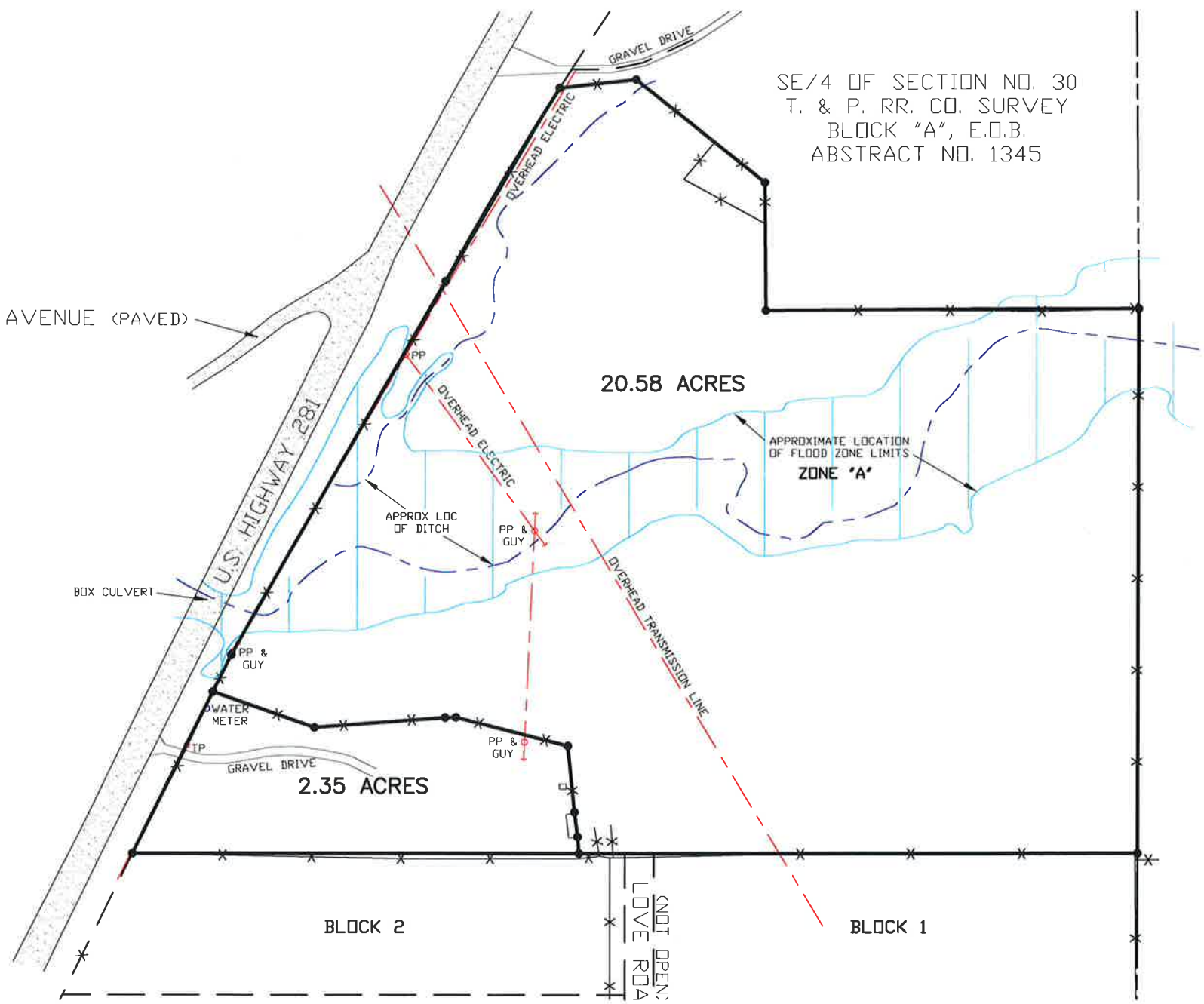
2.35 ACRES

PP & GUY

BLOCK 2

NOT OPEN
LOVE ROAD

BLOCK 1



SE/4 OF SECTION NO. 30
T. 1 P. RR. CO. SURVEY
BLOCK 'A', E.O.B.
ABSTRACT NO. 1345

NORTH OAK AVENUE (PAVED)

20.58 ACRES

APPROXIMATE LOCATION
OF FLOOD ZONE LIMITS

BOX CULVERT

U.S. HIGHWAY 281

APPROX. LOC
OF DITCH

OVERHEAD ELECTRIC

OVERHEAD ELECTRIC

OVERHEAD TRANSMISSION LINE

WATER METER

GRAVEL DRIVE

2.35 ACRES

(NOT OPEN)
LOVE ROAD

