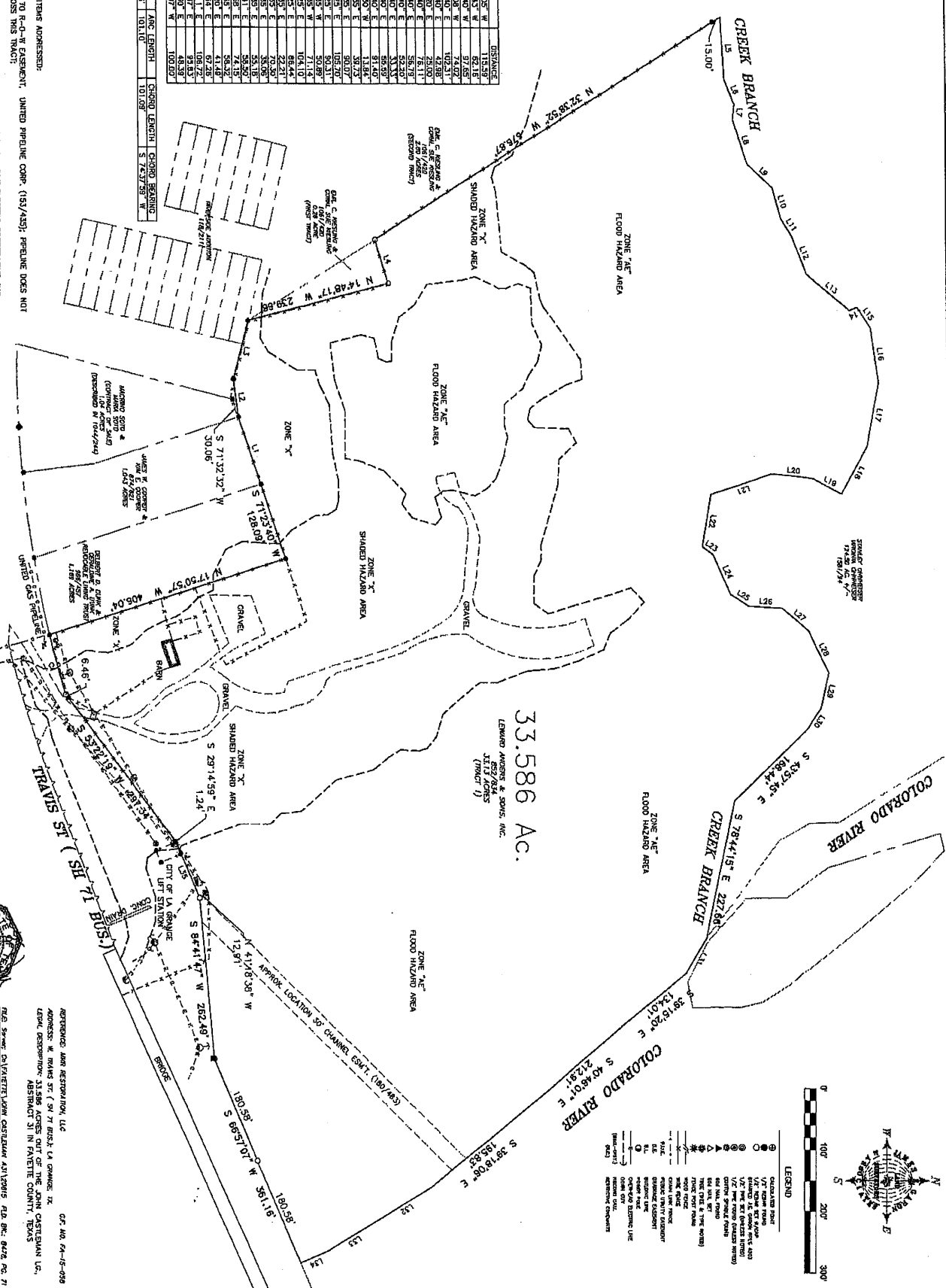


- LEGEND**
- ① Survey Point
 - ② 1/2" corner mark
 - ③ 1/4" corner mark
 - ④ 1/8" corner mark
 - ⑤ 1/16" corner mark
 - ⑥ 1/32" corner mark
 - ⑦ 1/64" corner mark
 - ⑧ 1/128" corner mark
 - ⑨ 1/256" corner mark
 - ⑩ 1/512" corner mark
 - ⑪ 1/1024" corner mark
 - ⑫ 1/2048" corner mark
 - ⑬ 1/4096" corner mark
 - ⑭ 1/8192" corner mark
 - ⑮ 1/16384" corner mark
 - ⑯ 1/32768" corner mark
 - ⑰ 1/65536" corner mark
 - ⑱ 1/131072" corner mark
 - ⑲ 1/262144" corner mark
 - ⑳ 1/524288" corner mark
 - ㉑ 1/1048576" corner mark
 - ㉒ 1/2097152" corner mark
 - ㉓ 1/4194304" corner mark
 - ㉔ 1/8388608" corner mark
 - ㉕ 1/16777216" corner mark
 - ㉖ 1/33554432" corner mark
 - ㉗ 1/67108864" corner mark
 - ㉘ 1/134217728" corner mark
 - ㉙ 1/268435456" corner mark
 - ㉚ 1/536870912" corner mark
 - ㉛ 1/1073741824" corner mark
 - ㉜ 1/2147483648" corner mark
 - ㉝ 1/4294967296" corner mark
 - ㉞ 1/8589934592" corner mark
 - ㉟ 1/17179869184" corner mark
 - ㊱ 1/34359738368" corner mark
 - ㊲ 1/68719476736" corner mark
 - ㊳ 1/137438953472" corner mark
 - ㊴ 1/274877906944" corner mark
 - ㊵ 1/549755813888" corner mark
 - ㊶ 1/1099511627776" corner mark
 - ㊷ 1/2199023255552" corner mark
 - ㊸ 1/4398046511104" corner mark
 - ㊹ 1/8796093022208" corner mark
 - ㊺ 1/17592186044416" corner mark
 - ㊻ 1/35184372088832" corner mark
 - ㊼ 1/70368744177664" corner mark
 - ㊽ 1/140737488355328" corner mark
 - ㊾ 1/281474976710656" corner mark
 - ㊿ 1/562949953421312" corner mark
 - ① 1/1125899906842624" corner mark
 - ② 1/2251799813685248" corner mark
 - ③ 1/4503599627370496" corner mark
 - ④ 1/9007199254740992" corner mark
 - ⑤ 1/18014398509481984" corner mark
 - ⑥ 1/36028797018963968" corner mark
 - ⑦ 1/72057594037927936" corner mark
 - ⑧ 1/144115188075855872" corner mark
 - ⑨ 1/288230376151711744" corner mark
 - ⑩ 1/576460752303423488" corner mark
 - ⑪ 1/1152921504606846976" corner mark
 - ⑫ 1/2305843009213693952" corner mark
 - ⑬ 1/4611686018427387904" corner mark
 - ⑭ 1/9223372036854775808" corner mark
 - ⑮ 1/18446744073709551616" corner mark
 - ⑯ 1/36893488147419103232" corner mark
 - ⑰ 1/73786976294838206464" corner mark
 - ⑱ 1/147573952589676412928" corner mark
 - ⑲ 1/295147905179352825856" corner mark
 - ⑳ 1/590295810358705651712" corner mark
 - ㉑ 1/1180591620717511303424" corner mark
 - ㉒ 1/2361183241435022606848" corner mark
 - ㉓ 1/4722366482870045213696" corner mark
 - ㉔ 1/9444732965740090427392" corner mark
 - ㉕ 1/18889465931480180844784" corner mark
 - ㉖ 1/37778931862960361689568" corner mark
 - ㉗ 1/75557863725920723379136" corner mark
 - ㉘ 1/151115727451841446758272" corner mark
 - ㉙ 1/302231454903682893516544" corner mark
 - ㉚ 1/604462909807365787033088" corner mark
 - ㉛ 1/1208925819614731574066176" corner mark
 - ㉜ 1/2417851639229463148132352" corner mark
 - ㉝ 1/4835703278458926296264704" corner mark
 - ㉞ 1/9671406556917852592529408" corner mark
 - ㉟ 1/19342813113835705185058816" corner mark
 - ㊱ 1/38685626227671410370117632" corner mark
 - ㊲ 1/77371252455342820740235264" corner mark
 - ㊳ 1/154742504910685641480470528" corner mark
 - ㊴ 1/309485009821371282960941056" corner mark
 - ㊵ 1/618970019642742565921882112" corner mark
 - ㊶ 1/1237940039285485131843764224" corner mark
 - ㊷ 1/2475880078570970263687528448" corner mark
 - ㊸ 1/4951760157141940527375056896" corner mark
 - ㊹ 1/9903520314283881054750113792" corner mark
 - ㊺ 1/1980704062856776209500022784" corner mark
 - ㊻ 1/3961408125713552419000045568" corner mark
 - ㊼ 1/7922816251427104838000091136" corner mark
 - ㊽ 1/1584563250285420967600018272" corner mark
 - ㊾ 1/3169126500570841935200036544" corner mark
 - ㊿ 1/6338253001141683870400072888" corner mark



LINE	BEARING	DISTANCE
L1	S 71°29'00" W	118.59
L2	S 82°31'42" W	62.18
L3	S 72°42'00" W	74.00
L4	S 72°42'00" W	74.00
L5	N 68°53'40" E	102.31
L6	N 68°53'40" E	42.88
L7	S 52°52'40" E	78.11
L8	S 52°52'40" E	58.75
L9	N 42°43'40" E	58.75
L10	N 74°46'40" E	52.30
L11	N 58°42'40" E	52.30
L12	N 38°54'40" E	81.40
L13	N 38°54'40" E	81.40
L14	N 21°11'50" W	13.84
L15	N 31°10'50" E	38.73
L16	S 28°39'50" W	50.89
L17	S 28°39'50" W	106.70
L18	S 28°39'50" W	50.81
L19	S 28°39'50" W	50.81
L20	S 28°39'50" W	50.81
L21	S 18°03'20" E	104.10
L22	S 80°37'20" E	88.44
L23	S 56°12'50" E	22.21
L24	N 67°14'50" E	35.28
L25	N 67°14'50" E	35.28
L26	N 03°59'50" E	55.18
L27	N 39°18'41" E	74.15
L28	N 39°18'41" E	74.15
L29	S 56°12'50" E	41.40
L30	S 56°12'50" E	67.28
L31	S 30°52'54" E	106.72
L32	S 30°52'54" E	106.72
L33	S 23°03'50" E	48.39
L34	S 23°03'50" E	48.39
L35	S 88°37'07" W	100.00

SCHEDULE "B" ITEMS ADDRESSED:
 10(a) SUBJECT TO R-O-W EASEMENT, UNITED PRELINE CORP. (153/452); PRELINE DOES NOT APPEAR TO CROSS THIS TRACT;
 10(b) SUBJECT TO BLANKET TYPE R-O-W EASEMENT, FAYETTE ELECTRIC COOPERATIVE, INC. (174/231)
 10(c) SUBJECT TO CHANNEL EASEMENT, STATE OF TEXAS (180/463); SHOWN
 10(d) SUBJECT TO 15' BLANKET TYPE R-O-W EASEMENT, FAYETTE WATER SUPPLY CORP. (689/291)

TO THE OWNERS, LEASEHOLDERS AND BOTH TITLE COMPANY:
 THE UNDERSIGNED DOES HEREBY CERTIFY THAT THIS SURVEY HAS BEEN MADE ON THE GROUND OF THE PROPERTY DESCRIBED HEREON AND IS CORRECT AND THAT THERE ARE NO DISCREPANCIES, SHORTAGES IN AREA, BOUNDARY LINE CONFLICTS, ENCROACHMENTS, AS SHOWN HEREON AND THAT SAID PROPERTY HAS ACCESS TO AND FROM A PUBLIC ROADWAY, EXCEPT AS SHOWN HEREON. THE UNDERSIGNED DOES FURTHER CERTIFY THAT THE PROPERTY SHOWN HEREON IS NOT SUBJECT TO ANY FEDERAL, STATE OR LOCAL FLOOD INSURANCE RATE MAP, PENDING 01/04/2020, EFFECTIVE OCTOBER 17, 2004.



JAMES E. GARON & ASSOC.
 PROFESSIONAL LAND SURVEYORS
 P.O. Box 1917
 Bostrop, Texas 76602
 (512) 303-4185
 www.jamesgaron.com
 jgaron@bostrop.com

REFERENCE: LAND RESTORATION, LLC
 ADDRESS: W. RAIN ST. (S 71 BUS.) LA GRANGE, TX
 100% DEED: 33.586 ACRES OUT OF THE JOHN CUSTEAMAN CO., TEXAS
 ABSTRACT 31 IN FAYETTE COUNTY, TEXAS

**JAMES E. GARON
& ASSOCIATES, INC.**
PROFESSIONAL LAND SURVEYORS

P.O. Box 1917
Bastrop, Texas 78602
512-303-4185
Firm Reg. #10058400
jgaron@austin.rr.com

March 23, 2015

LEGAL DESCRIPTION: BEING A 33.586 ACRE TRACT OF LAND LYING IN AND BEING SITUATED OUT OF THE JOHN CASTLEMAN LEAGUE, ABSTRACT 31 IN FAYETTE COUNTY, TEXAS AND BEING ALL OF THAT CERTAIN 33.13 ACRE TRACT OF LAND (TRACT 1) CONVEYED TO LEWARD ANDERS & SONS, INC. BY DEED RECORDED IN VOLUME 852, PAGE 834 OFFICIAL PUBLIC RECORDS, FAYETTE COUNTY, TEXAS; SAID 33.586 ACRE TRACT BEING MORE PARTICULARLY DESCRIBED AS FOLLOWS AND AS SURVEYED UNDER THE SUPERVISION OF JAMES E. GARON & ASSOCIATES IN MARCH, 2015:

BEGINNING at a calculated point on the northerly right-of-way line of Business Highway 71, also known as West Travis Street, for the southwesterly corner hereof and the southeast corner of that certain 1.169 acre tract of land conveyed to Delbert D. Dunk and Geraldine A. Dunk Revocable Living trust by deed recorded in Volume 966, Page 457 of said official records from which a 1/2" iron rod found bears S 17°50'57" E a distance of 0.30 feet;

THENCE N 17°50'57" W a distance of 406.05 feet to a 1/2" iron rod found for the northeasterly corner of said Dunk 1.169 acre tract;

THENCE S 71°23'40" W a distance of 128.09 feet to a 1/2" iron rod found for the northwest corner of said Dunk 1.169 acre tract and the northeast corner of that certain 1.043 acre tract of land conveyed to James W. Cooper and Kim E. Cooper by deed recorded in Volume 874, Page 821 of said official records;

THENCE S 71°29'05" W a distance of 115.59 feet to a 1/2" iron rod found for the northwest corner of said Cooper 1.043 acre tract and northeast corner of that certain 1.04 acre tract of land conveyed to Macrino Soto and Maria Soto by contract for deed and as described in Volume 1044, Page 244 of said official records;

THENCE S 82°31'43" W a distance of 62.16 feet to a 3/8" iron rod found for angle point;

THENCE N 75°43'40" W a distance of 97.65 feet to a 1/2" iron rod found on the north line of Lot 16, Block 1; Riverside addition as recorded in Volume 118, Page 211 deed records, Fayette County Texas for the southerly corner of that certain 0.26 acre tract of land conveyed to Emil C. Kiesling and Coral Sue Kiesling by deed recorded in Volume 1061, Page 420 of said official records;

THENCE with said Kiesling 0.26 acre tract, N 14°48'17" W a distance of 239.68 feet to an iron rod set for corner and S 72°29'08" W a distance of 74.02 feet to an iron rod set in the northeasterly line of that certain 2.80 acre tract of land conveyed to Emil C. Kiesling and Coral Sue Kiesling by deed recorded in Volume 1061, Page 420 of said official records;

THENCE N 32°38'52" W, passing a 1/2" iron rod found for reference at a distance of 661.87 feet and continuing for a total distance of 676.87 feet to a point in the approximate center of a creek branch;

THENCE with said creek branch the following twenty-eight (28) calls:

1. N 86°53'40" E a distance of 102.31 feet;
2. N 69°08'40" E a distance of 42.98 feet;
3. S 84°55'20" E a distance of 25.00 feet;
4. N 72°07'40" E a distance of 76.11 feet;
5. N 42°43'40" E a distance of 56.79 feet;
6. N 74°46'40" E a distance of 52.20 feet;
7. N 58°42'40" E a distance of 33.33 feet;
8. N 67°45'40" E a distance of 66.69 feet;
9. N 39°54'40" E a distance of 91.40 feet;
10. N 21°41'30" W a distance of 13.84 feet;
11. N 55°10'35" E a distance of 39.73 feet;
12. N 81°55'35" E a distance of 90.07 feet;
13. S 79°22'25" E a distance of 105.70 feet;
14. S 60°50'25" E a distance of 90.31 feet;
15. S 28°39'35" W a distance of 50.89 feet;
16. S 06°35'35" W a distance of 71.14 feet;
17. S 19°03'25" E a distance of 104.10 feet;
18. S 80°37'25" E a distance of 86.44 feet;
19. N 36°35'35" E a distance of 22.21 feet;
20. N 67°14'35" E a distance of 70.30 feet;
21. N 32°51'35" E a distance of 35.06 feet;
22. N 03°59'35" E a distance of 55.18 feet;
23. N 39°36'41" E a distance of 58.50 feet;
24. N 64°15'58" E a distance of 74.15 feet;
25. S 77°42'35" E a distance of 58.32 feet;
26. S 56°13'20" E a distance of 41.49 feet;
27. S 43°57'45" E a distance of 168.44 feet;
28. S 78°44'15" E a distance of 227.66 feet to a point on the westerly bank of the Colorado River;

THENCE with the Colorado River the following seven (7) calls:

1. S 59°52'54" E a distance of 67.26 feet;
2. S 39°15'20" E a distance of 134.01 feet;
3. S 40°46'01" E a distance of 212.91 feet;
4. S 39°18'06" E a distance of 195.83 feet;
5. S 30°55'11" E a distance of 106.72 feet;
6. S 31°45'37" E a distance of 95.83 feet;

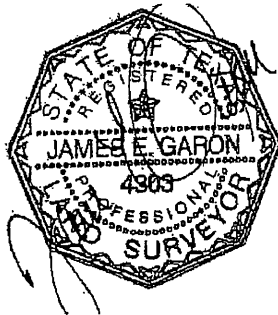
7. S 23°03'30" E a distance of 48.39 feet to a calculated point on the northerly right-of-way line of Business Highway 71, also known as West Travis Street;

THENCE with said right-of-way line the following five (5) calls:

1. S 66°57'07" W, passing an iron rod set for reference at a distance of 180.58 feet and continuing for a total distance of 361.16 feet to a concrete right-of-way monument found for angle point;
2. S 84°41'47" W a distance of 262.49 feet to an iron rod set for angle point from which a concrete right-of-way monument bears N 41°18'38" W a distance of 12.91 feet;
3. S 66°57'07" W a distance of 100.00 feet to a point for corner from which a concrete right-of-way marker bears S 29°14'59" E a distance of 1.24 feet;
4. S 53°22'19" W a distance of 297.34 feet to an iron rod set for angle point from which a 1/2" iron rod found bears N 53°22'19" E a distance of 6.46 feet;
5. a distance of 101.10 feet along the arc of a curve to the right having a radius of 1809.86 feet and a chord bearing S 74°37'59" W a distance of 101.09 feet

to the **POINT OF BEGINNING**, containing 33.586 acres of land, more or less and as shown on map of survey prepared herewith.

Surveyed by:



James E. Garon
Registered Professional Land Surveyor

Server; co\Fayette\surveys\John Castleman A31\20815