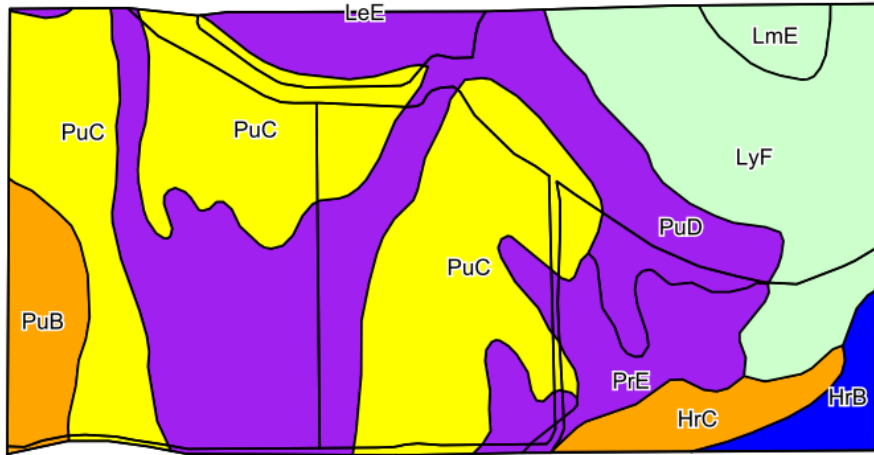
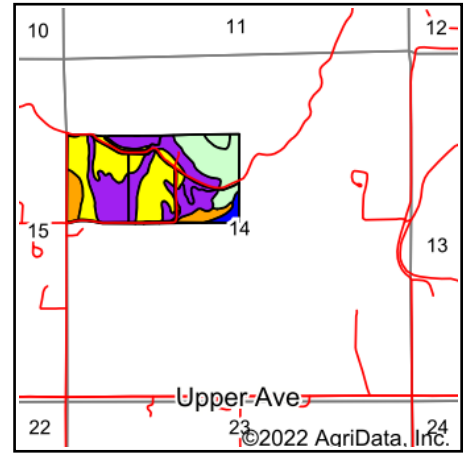


Soils Map



©2022 AgriData, Inc.

Soils data provided by USDA and NRCS.



State: **Idaho**
 County: **Gem**
 Location: **14-7N-3W**
 Township: **Emmett Bench**
 Acres: **81.23**
 Date: **1/31/2022**



Maps Provided By:



© AgriData, Inc. 2021

www.AgriDataInc.com



Area Symbol: ID660, Soil Area Version: 17

Code	Soil Description	Acres	Percent of field	Irr class Legend	Non-Irr Class *c	Irr Class *c	Alfalfa hay Irrigated Tons	Corn Irrigated Bu	Corn silage Irrigated Tons	Irish potatoes Irrigated Cwt	Legume hay Irrigated Tons	Pasture Irrigated AUM	Sugar beets Irrigated Tons	Sweet corn Irrigated Tons	Wheat Irrigated Bu	*n NCCP Soybeans
PuC	Power and Purdam soils, 3 to 7 percent slopes	27.87	34.3%		Vlc	Ive	6	89	15	321		14	23	2	92	
PuD	Power and Purdam soils, 7 to 12 percent slopes	25.00	30.8%		Vlc	Vle	4	81	12	147		10	11	2	68	
LyF	Lolalita coarse sandy loam, 30 to 60 percent slopes	13.59	16.7%		Vlle											
PrE	Power and Lolalita soils, 12 to 30 percent slopes	4.86	6.0%		Vle	Vle	2					5				
PuB	Power and Purdam soils, 1 to 3 percent slopes	3.73	4.6%		Vlc	Ille	7	102	17	351		17	26	3	100	
HrC	Harpt loam, 3 to 7 percent slopes	2.80	3.4%		Vlc	Ille		93	20	345	6	15	23		100	
HrB	Harpt loam, 1 to 3 percent slopes	1.88	2.3%		Vlc	Ile		105	25	370	7	16	28		110	



LmE	Lanktree and Chilcott loams, 12 to 30 percent slopes	1.50	1.8%		Vlc											
Weighted Average					6.17	3.87	3.7	65.8	10.9	192	0.4	9.8	13.9	1.4	63.1	*n

*n: The aggregation method is "Weighted Average using all components"

*c: Using Capabilities Class Dominant Condition Aggregation Method

Soils data provided by USDA and NRCS.