



## **Highway 97 Tract**



**14.5 Acres**  
**Escambia County, Florida**

# **Highway 97 Tract**

## **14.5 Acres**

### **Escambia County, Florida**

**LOCATION:** Northwest Florida. Atmore is 3.6 miles to the north. Molino is 21 miles to the south. Pensacola is 44.5 miles to the south.

**DESCRIPTION:** A country homesite in the woods overlooking a pond is a dream for most but can become a reality on the Highway 97 Tract. This property is covered in mature pine and hardwood timber that has been forestry mowed to clear out the underbrush. It has 2 acres of open land along the highway frontage that will make a great garden area. The current owner is in the process of finishing a pond on the tract also. This property has paved road frontage along Highway 97 with power and county water available.

**ACCESS:** From Atmore take Highway 97 south 5 miles and the Highway 97 Tract will be on the right.

**Price:**\$199,500.00

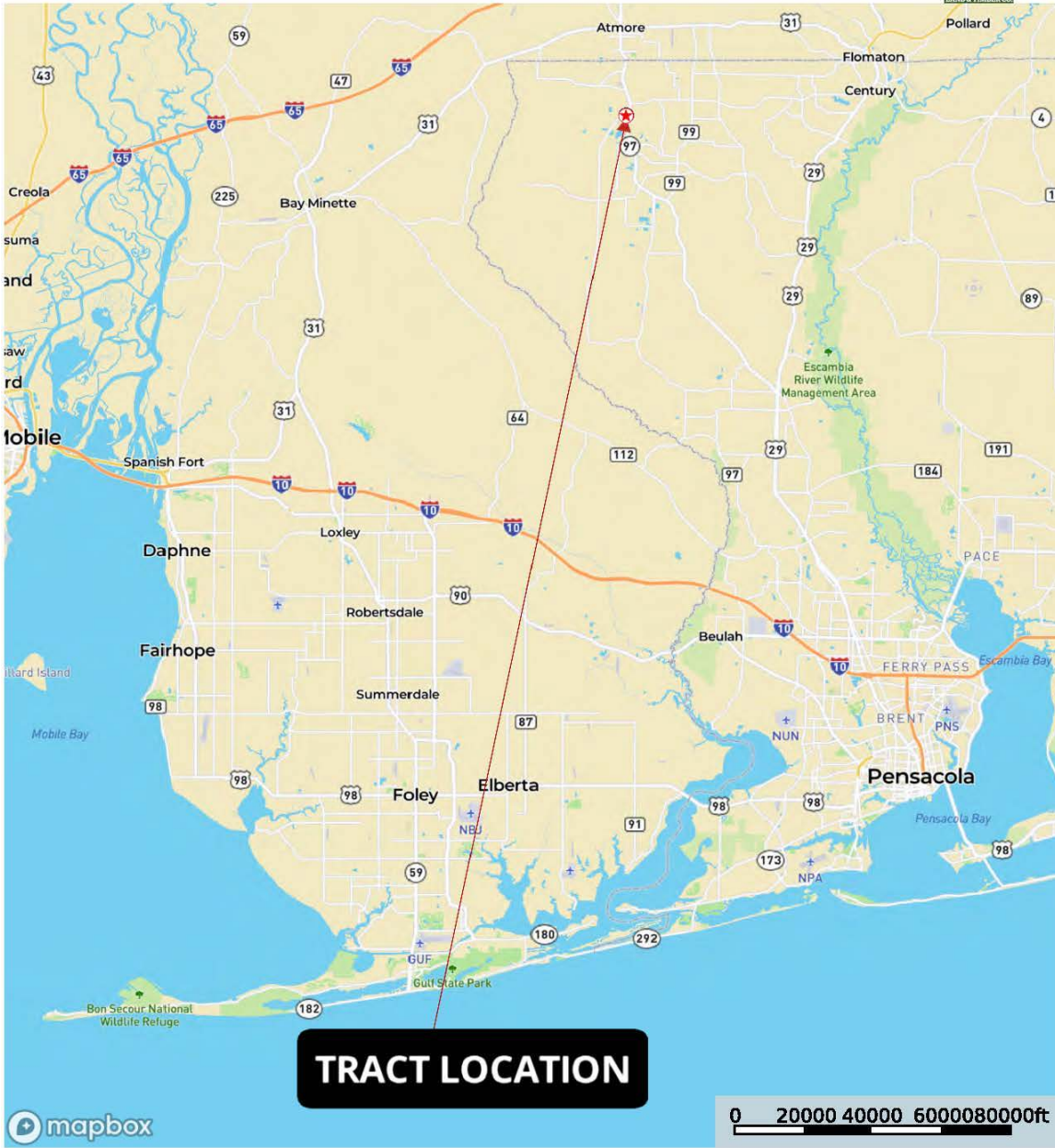
**Contact Information:**

**F. Bradford Butler**

**800-704-0645**

**[brad@butlerlandandtimber.com](mailto:brad@butlerlandandtimber.com)**

Escambia County, Florida, 14.5 AC +/-



[www.butlerlandandtimber.com](http://www.butlerlandandtimber.com)

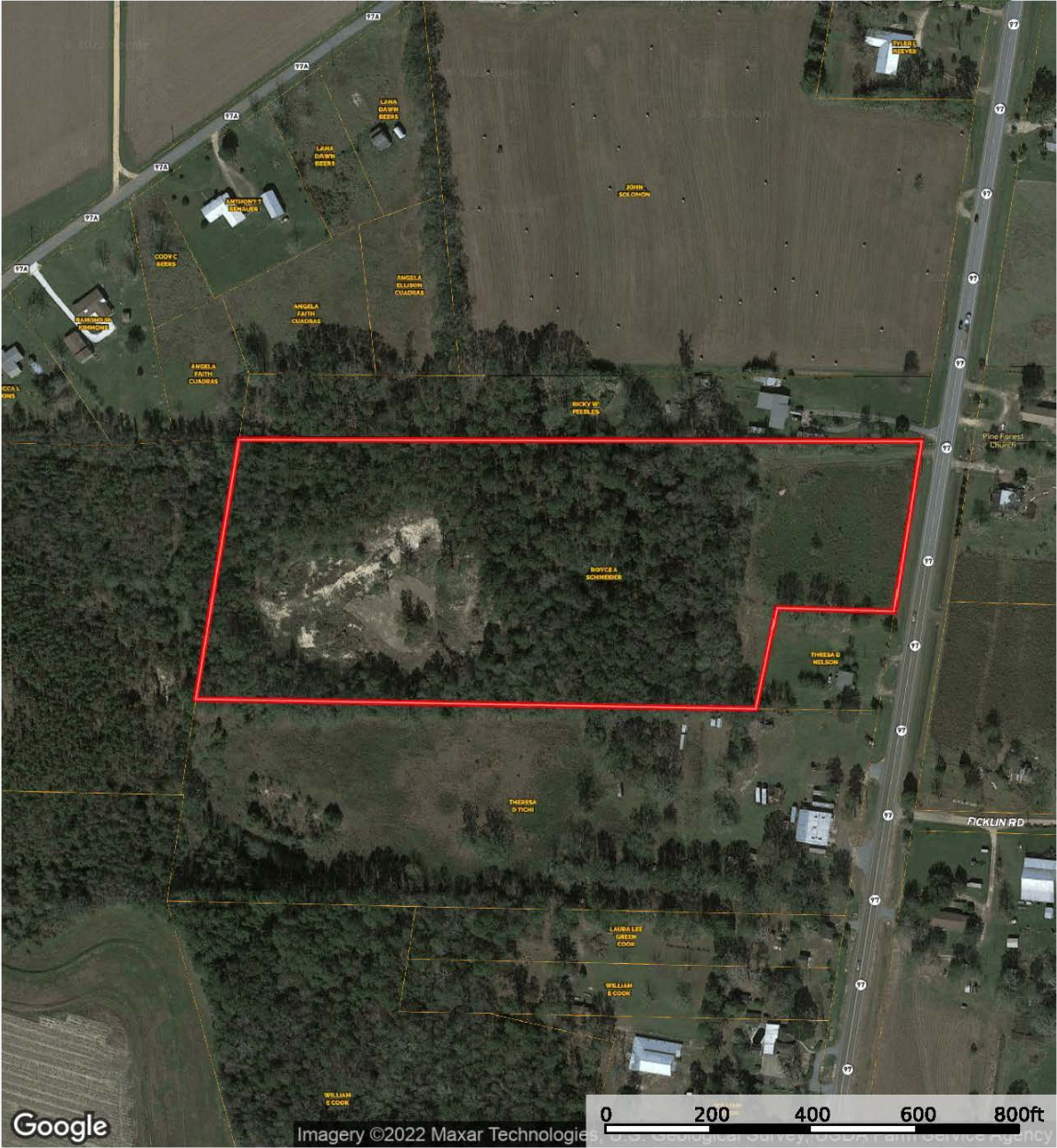


The information contained herein was obtained from sources deemed to be reliable.  
MapRight Services makes no warranties or guarantees as to the completeness or accuracy thereof.



# AERIAL

Highway 97 Tract  
Escambia County, Florida, 14.5 AC +/-



Boundary

Brad Butler  
P: 850-776-0252    [www.butterlandandtimber.com](http://www.butterlandandtimber.com)

**M** The information contained herein was obtained from sources deemed to be reliable. MapRight Services makes no warranties or guarantees as to the completeness or accuracy thereof.

# TOPOGRAPHY

## Highway 97 Tract

Escambia County, Florida, 14.5 AC +/-



Brad Butler  
P: 850-776-0252

[www.butterlandandtimber.com](http://www.butterlandandtimber.com)

**M** The information contained herein was obtained from sources deemed to be reliable. MapRight Services makes no warranties or guarantees as to the completeness or accuracy thereof.



**Listing Broker**

**F. Bradford Butler**

**850-776-0252**

**[brad@butlerlandandtimber.com](mailto:brad@butlerlandandtimber.com)**