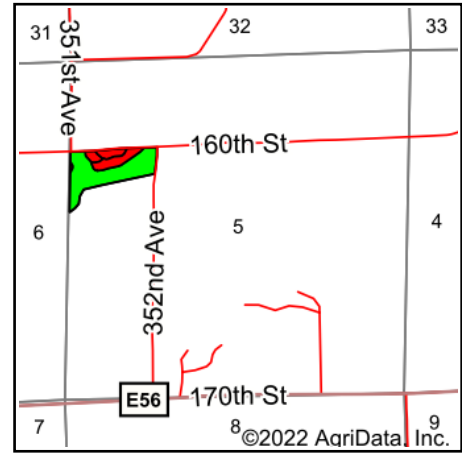
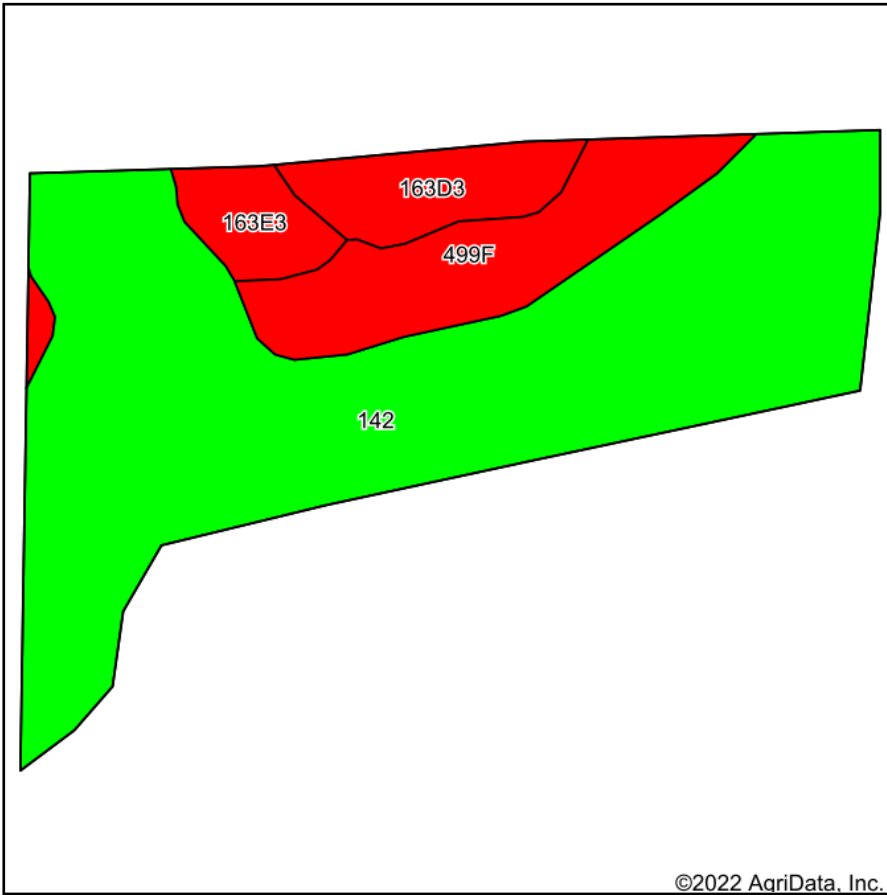


Soils Map - Total Acres



State: **Iowa**
 County: **Clinton**
 Location: **5-82N-5E**
 Township: **Center**
 Acres: **17**
 Date: **2/14/2022**



Maps Provided By:



Soils data provided by USDA and NRCS.

©2022 AgriData, Inc.

© AgriData, Inc. 2021

www.AgriDataInc.com

Area Symbol: IA045, Soil Area Version: 27

| Code | Soil Description | Acres | Percent of field | CSR2 Legend | Non-Irr Class *c | *i Corn Bu | *i Alfalfa Tons | *i Soybeans Bu | CSR2** | *n NCCPI Corn | *n NCCPI Soybeans |
|-------------------------|---|-------|------------------|-------------|------------------|-------------|-----------------|----------------|-------------|----------------|-------------------|
| 142 | Chaseburg silt loam, moderately well drained, 0 to 2 percent slopes | 12.43 | 73.1% | | IIw | 180.8 | 5.1 | 52.4 | 79 | 84 | 86 |
| 499F | Nordness silt loam, 14 to 25 percent slopes | 2.49 | 14.6% | | VIIIs | 88 | 2.5 | 25.5 | 5 | 43 | 27 |
| 163D3 | Fayette silty clay loam, 9 to 14 percent slopes, severely eroded | 1.20 | 7.1% | | IVe | 153.6 | 4.3 | 44.5 | 40 | 74 | 54 |
| 163E3 | Fayette silty clay loam, 14 to 18 percent slopes, severely eroded | 0.88 | 5.2% | | Vle | 129.6 | 3.6 | 37.6 | 29 | 71 | 51 |
| Weighted Average | | | | | | 3.08 | 162.6 | 4.6 | 62.8 | *n 76.6 | *n 73.3 |

**IA has updated the CSR values for each county to CSR2.

*i Yield data provided by the ISPAID Database version 8.1.1 developed by IA State University.

*n: The aggregation method is "Weighted Average using all components"

*c: Using Capabilities Class Dominant Condition Aggregation Method

Soils data provided by USDA and NRCS.