



**T R O P H Y**  
PROPERTIES AND AUCTION  
LAND | RECREATIONAL | RESIDENTIAL

# Tillable Land for Sale - Lincoln County Missouri

www.TrophyPA.com • (855) 573-5263 • leads@trophyhpa.com

**PRICE IMPROVED**



**PROPERTY ADDRESS:**

948 Plepers Corner Rd.  
Silex, MO 63377

**PRICE:** \$4509,000

**ACRES:** 57

**COUNTY:** Lincoln

**PROPERTY HIGHLIGHTS:**

- 57± acres of Vacant Land in Lincoln County
- 45± acres in current row crop production
- Property borders the Cuivre River West Fork
- Hunting & Fishing opportunities

**PROPERTY DESCRIPTION:**

Located Northwest of Troy, MO, this property is 57± acres of mostly tillable land lays along the Cuivre River West Fork on Piepers Corner Rd. Approximately 45± acres are in current row crop production. Hunting and Fishing opportunities. No known restrictions.



**PRESENTED BY:**

**JOE OGDEN**

**Land & Home Specialist—MO**

M: (636)358-3567

P: (855) 573-5263 x707

E: jogden@trophyhpa.com

**Trophy Properties and Auction**

15480 Clayton Road

Suite 101

Ballwin, MO 63011

www.Trophyhpa.com

leads@trophyhpa.com

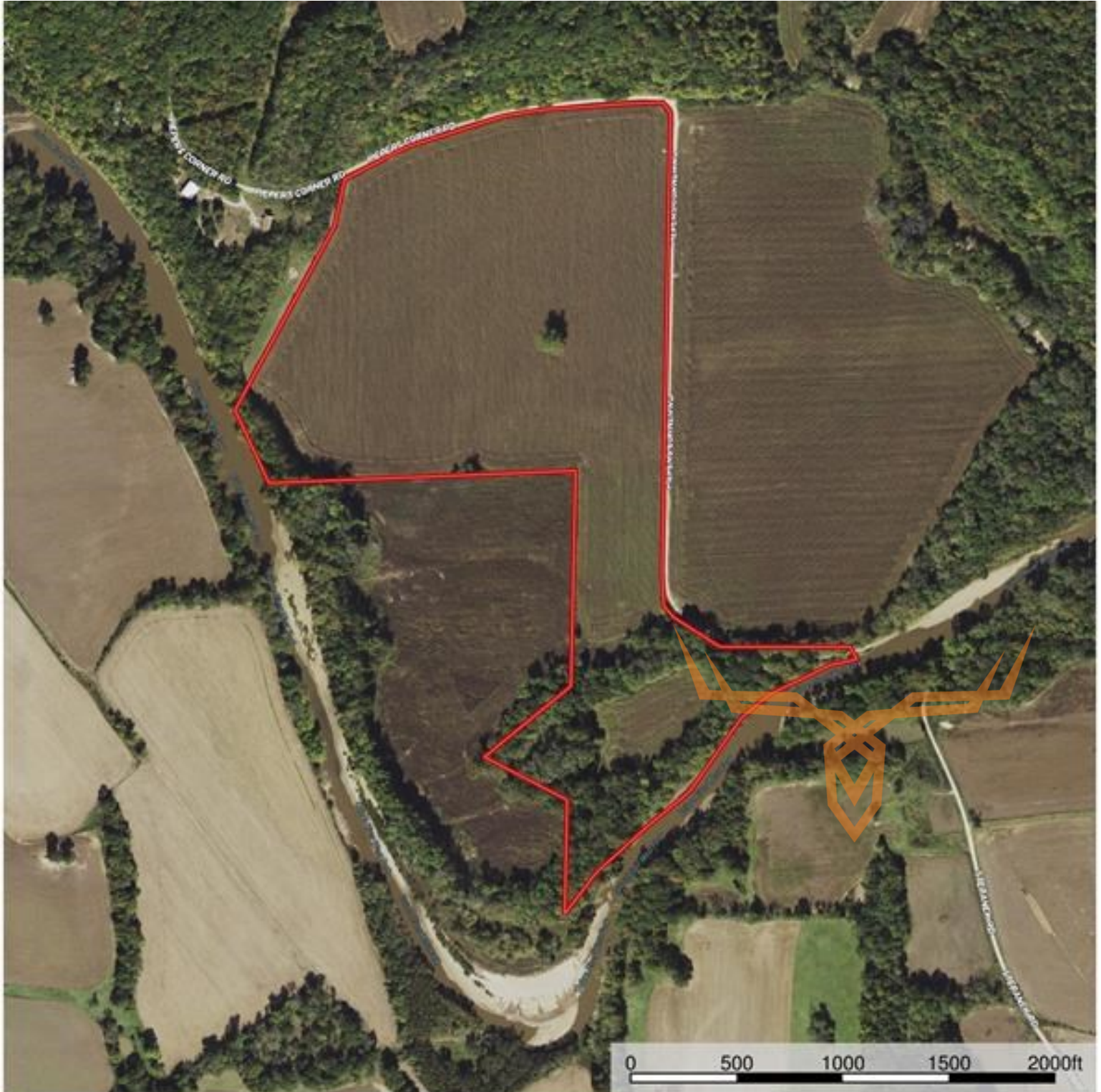




**T R O P H Y**  
PROPERTIES AND AUCTION  
LAND | RECREATIONAL | RESIDENTIAL

# Tillable Land for Sale - Lincoln County Missouri

[www.TrophyPA.com](http://www.TrophyPA.com) • (855) 573-5263 • [leads@trophy.com](mailto:leads@trophy.com)



Broker does not guarantee the accuracy of sq. ft., lot size, or other information, buyer is advised to independently verify the accuracy of information through personal inspection and with appropriate professionals