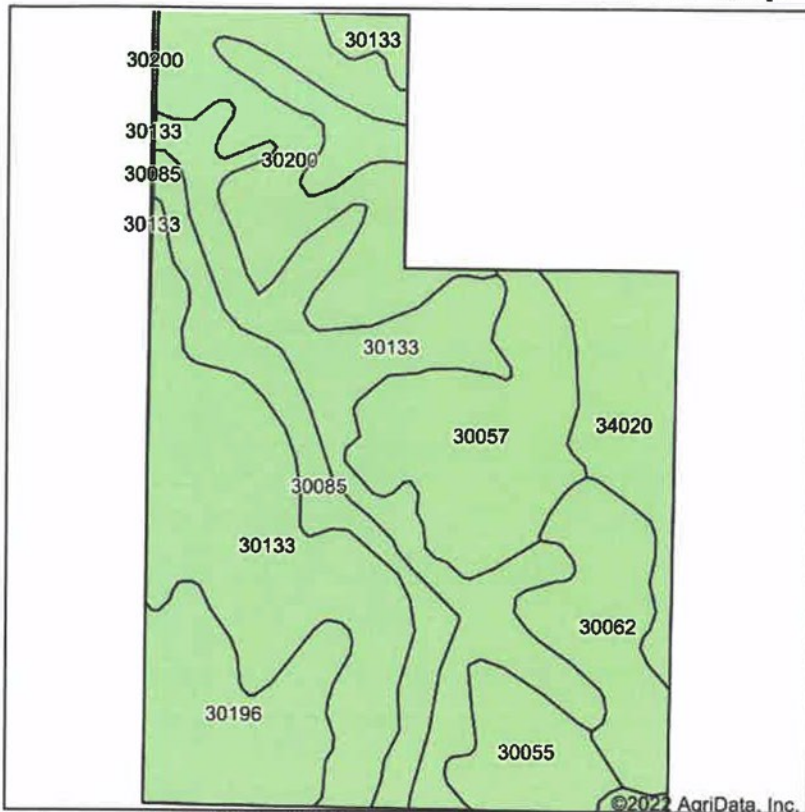
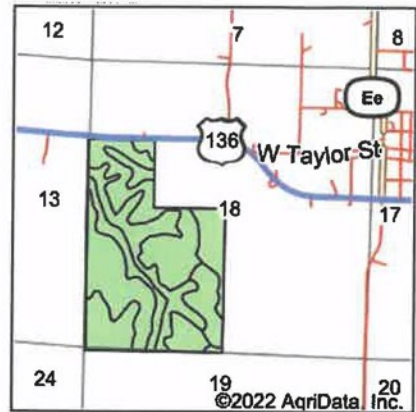


Soils Map



Soils data provided by USDA and NRCS.



State: **Missouri**
 County: **Harrison**
 Location: **18-63N-29W**
 Township: **White Oak**
 Acres: **190.3**
 Date: **2/18/2022**

United
Country
NELSON REAL ESTATE

Maps Provided By:

surety
 CUSTOMIZED ONLINE MAPPING
 © AgriData, Inc. 2021 www.AgriDataInc.com



Area Symbol: MO075, Soil Area Version: 24
 Area Symbol: MO081, Soil Area Version: 25

Code	Soil Description	Acres	Percent of field	Non-Irr Class *c
30133	Lamoni clay loam, 5 to 9 percent slopes, eroded	67.85	35.7%	IIIe
30200	Shelby loam, 9 to 14 percent slopes	23.92	12.6%	IIIe
30057	Gara loam, 14 to 18 percent slopes	22.49	11.8%	VIe
34020	Colo silty clay loam, drainageway, 2 to 5 percent slopes, frequently flooded	20.63	10.8%	IIw
30196	Shelby clay loam, 9 to 14 percent slopes, severely eroded	17.60	9.2%	IVe
30062	Gara loam, 9 to 14 percent slopes	14.27	7.5%	IVe
30085	Grundy silt loam, 2 to 5 percent slopes	13.98	7.3%	IIe
30055	Gara clay loam, 9 to 14 percent slopes, severely eroded	9.10	4.8%	IVe
30200	Shelby loam, 9 to 14 percent slopes	0.23	0.1%	IIIe
30133	Lamoni clay loam, 5 to 9 percent slopes, eroded	0.17	0.1%	IIIe
30085	Grundy silt loam, 2 to 5 percent slopes	0.06	0.0%	IIe
Weighted Average				3.39

*c: Using Capabilities Class Dominant Condition Aggregation Method