



OFFERING MEMORANDUM

14.62 ACRES

TYREE ROAD | DOUGLAS COUNTY | GEORGIA



Disclosure / Confidentiality Statement

The material contained in this Offering Memorandum is confidential, furnished solely for the purpose of considering the acquisition of the 14.62 Acres in Douglas County, Georgia ("Property"), and is not to be used for any other purpose or made available to any other person without the express written consent of Pioneer Land Group ("Broker") and the Owner ("Owner"). This Offering Memorandum was prepared by Broker, and the Information contained herein has been obtained from sources that Broker deems to be reliable, and Broker has no reason to doubt its accuracy. However, neither Owner, its affiliates, officers, directors or employees, nor the Broker, nor any other party, make any warranty or representation, expressed or implied, as to the accuracy or completeness of the information contained herein, including but not limited to financial information and projections, and any engineering and environmental information. Prospective purchasers should make their own investigations, projections, and conclusions. It is expected that prospective purchasers will conduct their own independent due diligence concerning the Property, including such engineering inspections as they deem necessary to determine the condition of the Property. Pioneer Land Group represents the Owner in this transaction and makes no representations, expressed or implied, as to the foregoing matters.

This Offering Memorandum is exclusively presented by the Broker. For additional Information or to schedule a property tour, please contact:



Chris Rentz

Office: (770) 225-0718

Fax: (770) 225-0718

Cell: (404) 702-7193

E-Mail: crentz@pioneerlandga.com



Kyle Gable

Office: (770) 225-0718

Fax: (770) 225-0718

Cell: (404) 867-3332

E-Mail: kgable@pioneerlandga.com

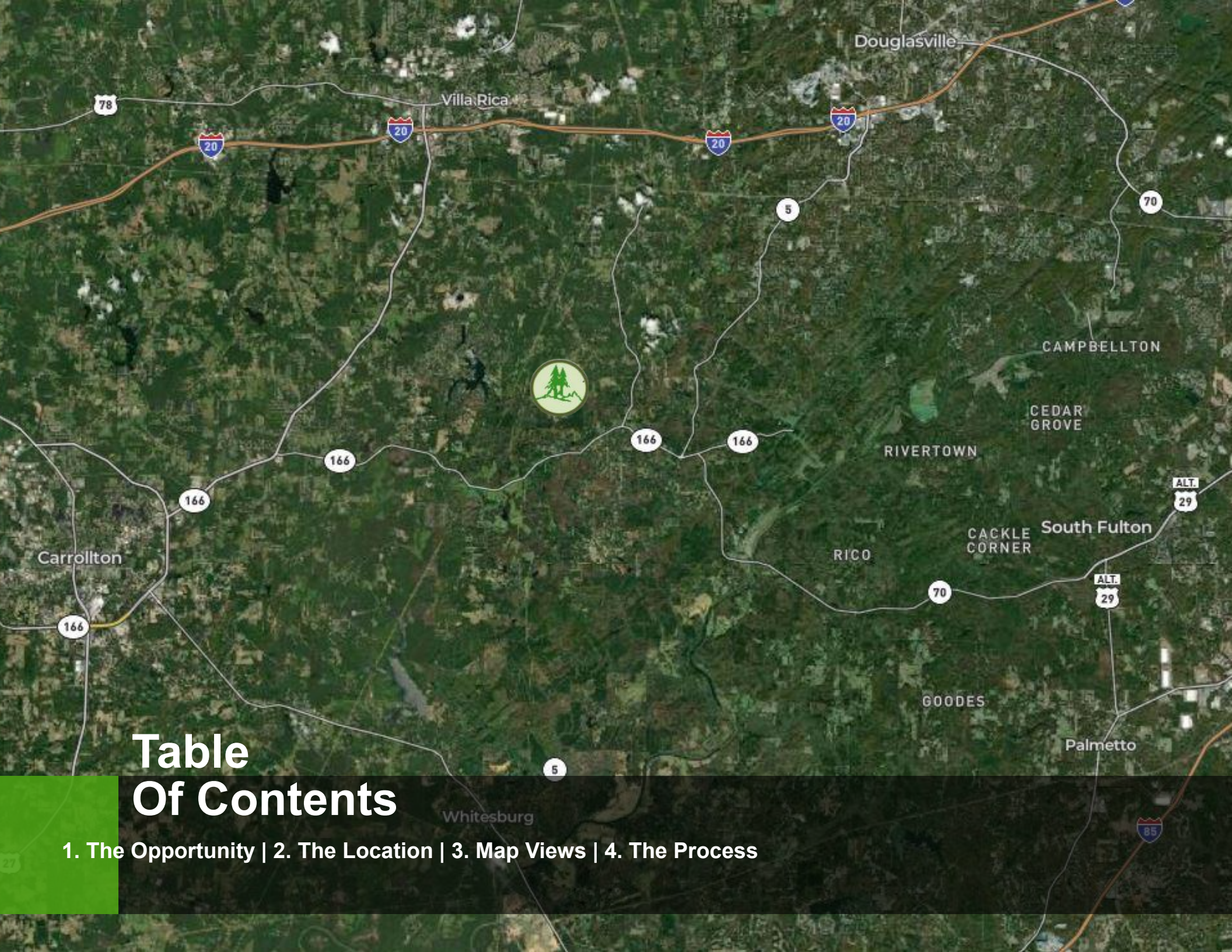


Table Of Contents

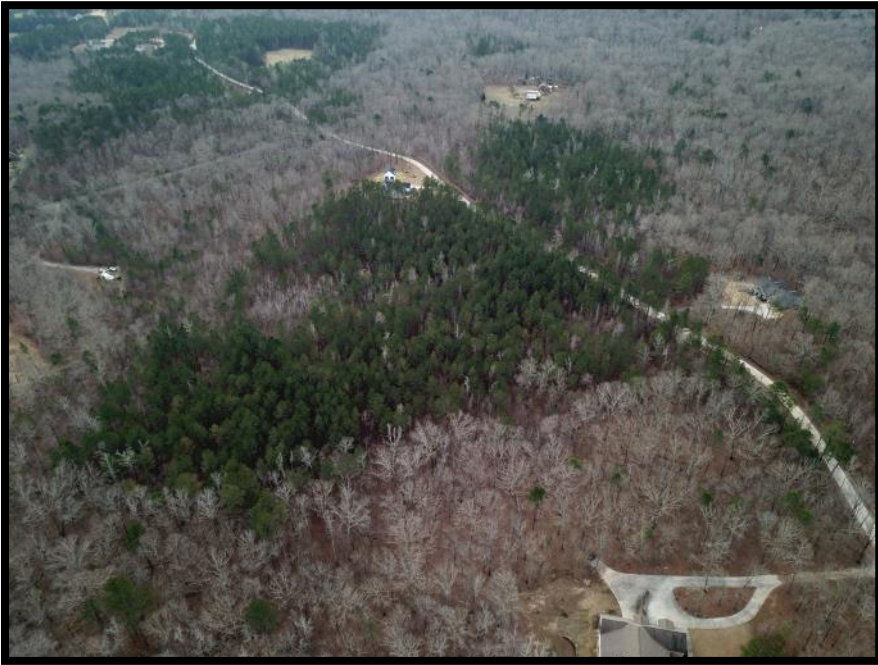
1. The Opportunity | 2. The Location | 3. Map Views | 4. The Process

The Opportunity

Pioneer Land Group is pleased to present Tyree Road, a 14.62 acre parcel in Douglas County, Georgia. The Property offers the following attributes:

- The Opportunity is zoned R-A, Residential Agricultural.
- The site offers a level topography with a variety of mature timber. The trees consist of different species of hardwood and pines.
- The Site offers 771' of frontage on Tyree Road. Tyree Road is county maintained road that intersects major corridors in the county.
- The Site is easy to navigate by foot with minimal fallen timber. Strong game trails are present throughout.
- There is a variety of single family detached housing off this section of Tyree Road. The Neighboring houses are all established estates that would easily sale for over \$450,000 in value.
- The Land offers a topographic lay that can service single family development– recreational use– and investment opportunity.





Utilities:

The Property is served by public water, septic, and electricity. All utilities should be independently verified by prospective purchaser.

Distance to Key Landmarks:

Hartsfield-Jackson Atlanta International Airport: 31.8 Miles

Interstate 20: 6.9 Miles

Clinton Nature Preserve: 6.4 Miles

Historic Downtown Douglasville: 12.8 Miles

Historic Downtown Villa Rica: 8.3 Miles

Schools:

South Douglas Elementary School-



Fairplay Middle School-



Alexander High School-



**Ranking 's obtained through schooldigger.com*

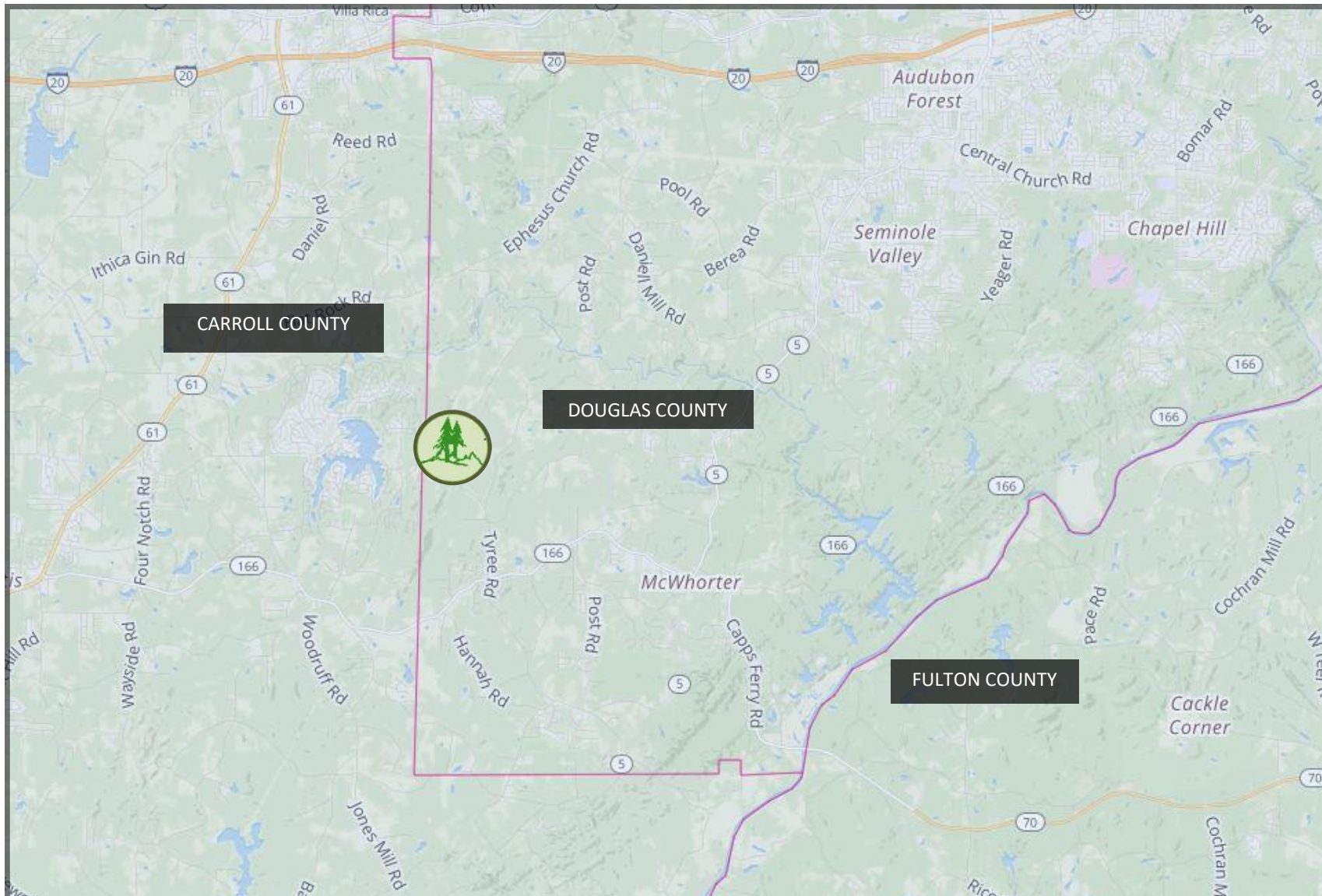
County Taxes:

County	Parcel ID	Tax Year	Tax Amount
Douglas	01560350001	2021	\$1,432
Douglas	01560350001	2020	\$1,457
Douglas	01560350001	2019	\$2,154



Location Overview

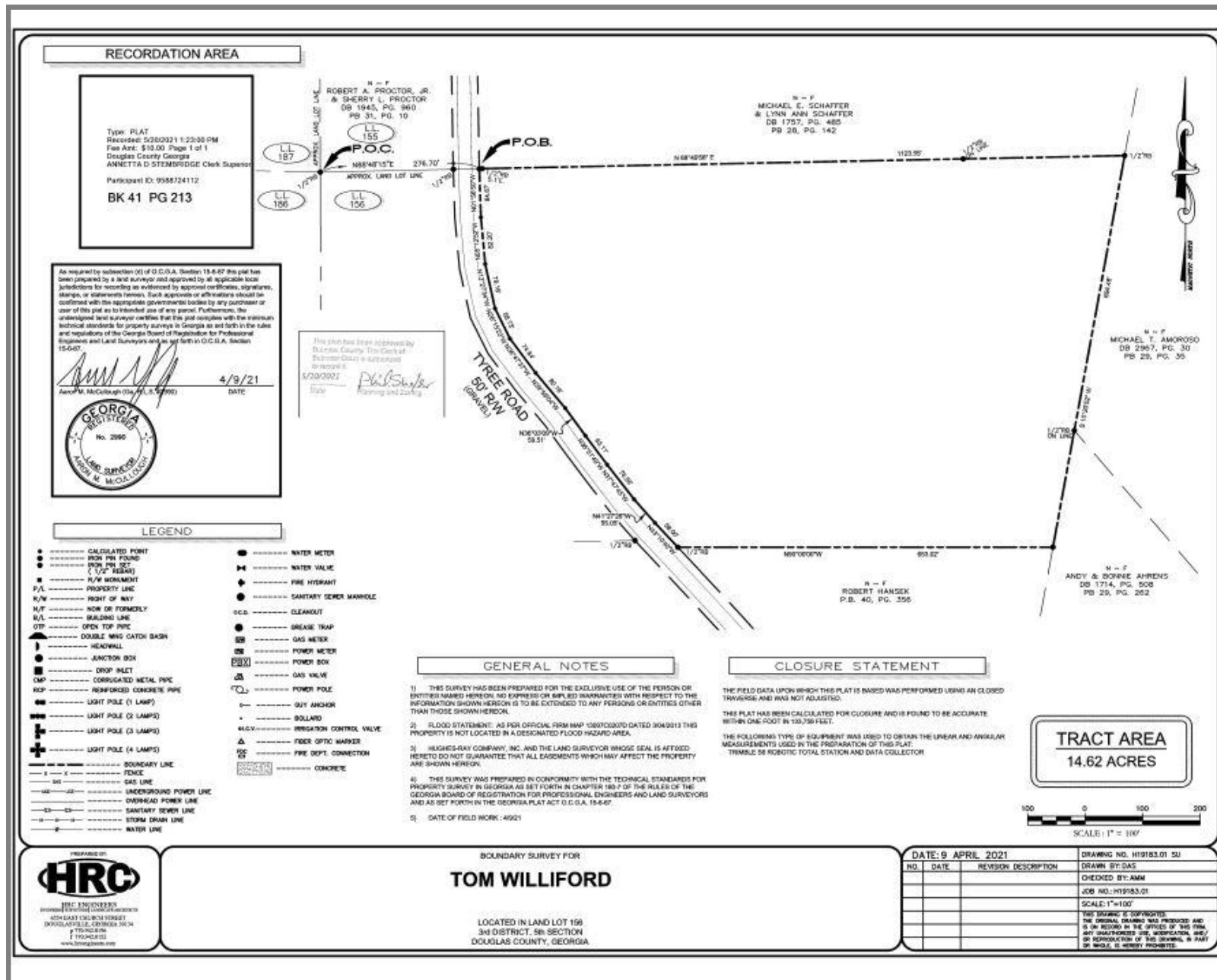
The Opportunity is located in the unincorporated community of Winston. The area is in the southwestern section of Douglas County, Georgia. The city of Winston provides a rural setting with commercial and industrial restrictions. Such ordinances and restrictions are in place to preserve the current setting. The Winston area is also districted for the best performing school's in the county. The neighboring Property address is 7270 Tyree Road Winston, GA.



Low Altitude Map View



Property Survey



The Process

The owner has set an offering price for the Property at \$182,750 (\$12,500 per acre).

Interested parties should submit an offer in the form of GAR documents or a proposed term sheet that includes the following information:

- Price
- Earnest Money
- Due Diligence Period
- Closing Period
- Contingencies
- Overview of purchaser including financial capabilities

We are available to discuss the project and address any questions at your convenience. If you would like to schedule a showing with a member of our team please contact one of the listing agents.



Kyle Gable
Office: (770) 225-0718
Fax: (770) 225-0718
Direct: (404) 867-3332
E-Mail: kgable@pioneerlandga.com

Chris Rentz
Office: (770) 225-0718
Fax: (770) 225-0718
Direct: (404) 702-7193
E-Mail: crentz@pioneerlandga.com

