

BUILD YOUR DREAM HOME ON THE RIVER!

39303 Plagman (Next to) Lebanon, OR

 \$385,000



5 Acres



Water Rights

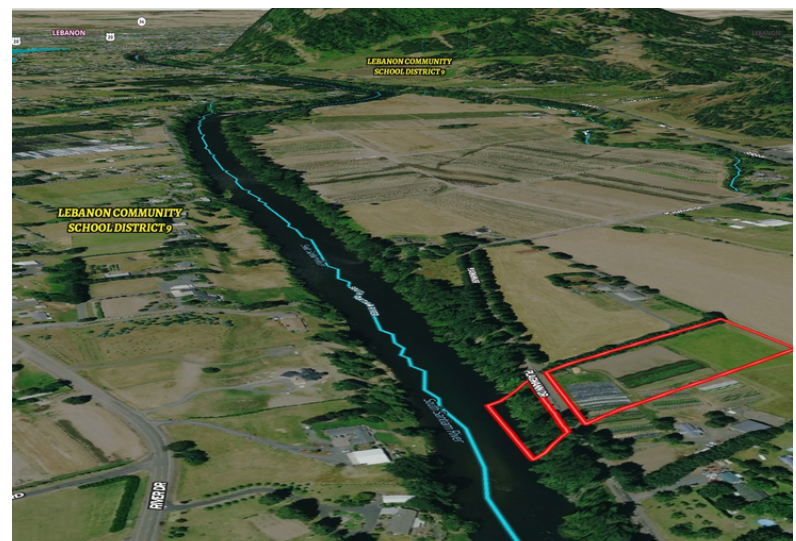
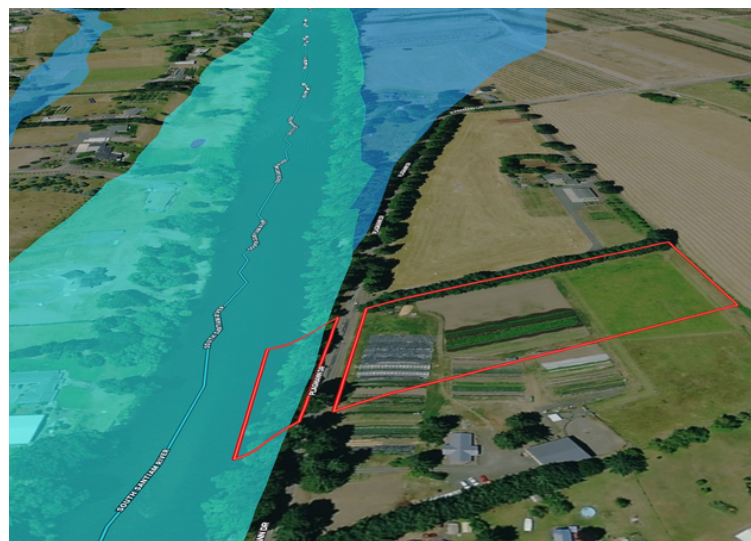


THE PROPERTY

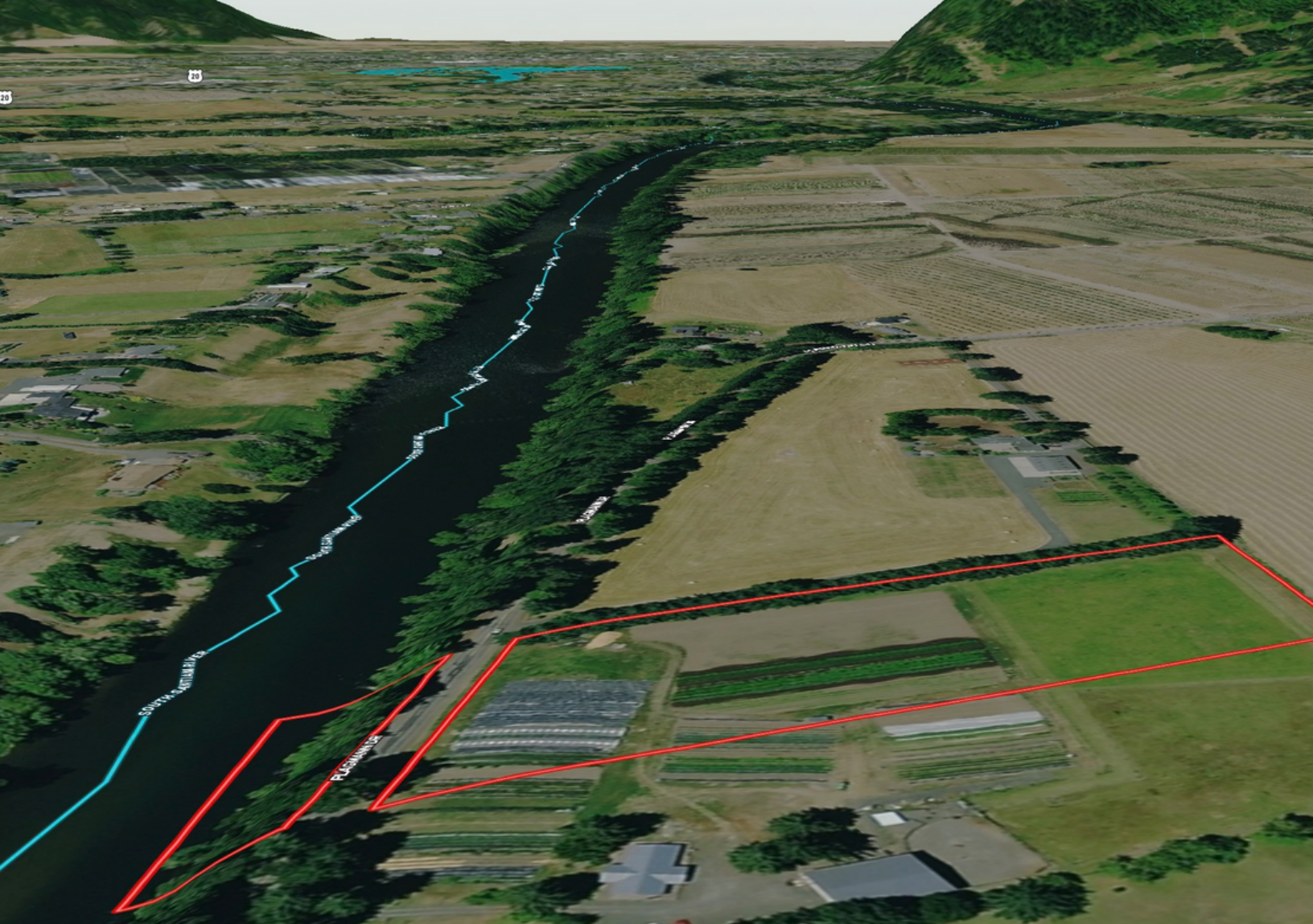
This 5 acre Santiam riverfront homesite with water rights and fertile Class I (Chapman) soils could grow just about anything in the Willamette Valley. Surrounded by farms and fronting the South Santiam River, this lot offers you the perfect peaceful location for your new home. Fish from the bank, swim, play, kayak, or paddleboard up to Waterloo Falls or down to the Lebanon Dam for some of the best salmon and steelhead fishing in the valley.

KEY FACTS

- South Santiam River Frontage
- Good Fishing (Salmon, Steelhead)
- Buildable
- Water Rights
- Class 1 Soils
- Septic Approval



NOTICE OFFER IS SUBJECT TO ERRORS, OMISSIONS, PRIOR SALE, CHANGE OR WITHDRAWAL WITHOUT NOTICE, AND APPROVAL OF PURCHASE BY OWNER. INFORMATION REGARDING LAND CLASSIFICATION, CARRYING CAPACITIES, MAPS, ETC., IS INTENDED ONLY AS A GENERAL GUIDELINE AND HAS BEEN PROVIDED BY THE OWNERS AND OTHER SOURCES DEEMED RELIABLE, BUT THE ACCURACY CANNOT BE GUARANTEED. PROSPECTIVE PURCHASERS ARE ENCOURAGED TO RESEARCH THE INFORMATION TO THEIR OWN SATISFACTION.



**Oregon
Farm & Home**
★ B R O K E R S ★

Paul Terjeson

503-999-6777


Steve Helms

541-979-0118

OregonFarmandHomeBrokers.com

kw MID-WILLAMETTE 
KELLERWILLIAMS. REALTY

Each office is independently
owned and operated

 **Columbia**