



# TILLER

CONSULTING | REALTY | DEVELOPMENT

- EST. 2020 -

FARMLAND COLLECTION

PRESENTING

## THE BONO FARM

CRAIGHEAD COUNTY, ARKANSAS



# THE BONO FARM

Craighead County Arkansas

The Bono Farm is a 855 acre family-owned rice and soybean farm located in one of the largest rice producing counties in Arkansas. The farm is in a highly productive area with good water accessibility for irrigation on the 820 farmable acres. There are 8 irrigation wells and a relift on the farm. Grain storage with up to 90,000 bushel capacity has recently been added.



## PROPERTY HIGHLIGHTS

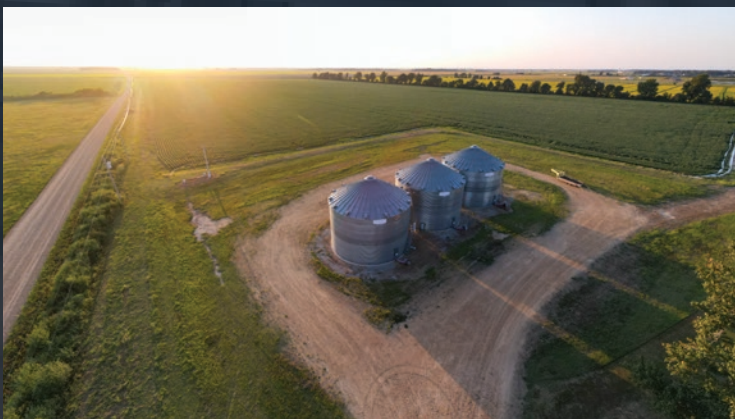
- Highly productive rice and soybean area.
- 8 irrigation wells and a relift.
- Farm has a 75%/25% cropshare lease.
- Recently added grain storage.





# THE BONO FARM

Craighead County Arkansas





# THE BONO FARM

Craighead County Arkansas

**TOTAL BASE ACRES: 855**

**OIL, GAS & MINERAL:** All rights owned will transfer

**CURRENT RENT:** 75%-25% Crop Share

**REAL ESTATE TAXES:** TBD

**TOTAL ACREAGE:** +/- 855 approx.

**FARMABLE ACREAGE:** +/- 820, per FSA data

**COUNTY:** Craighead

**ASKING PRICE:** \$ 5,950,000

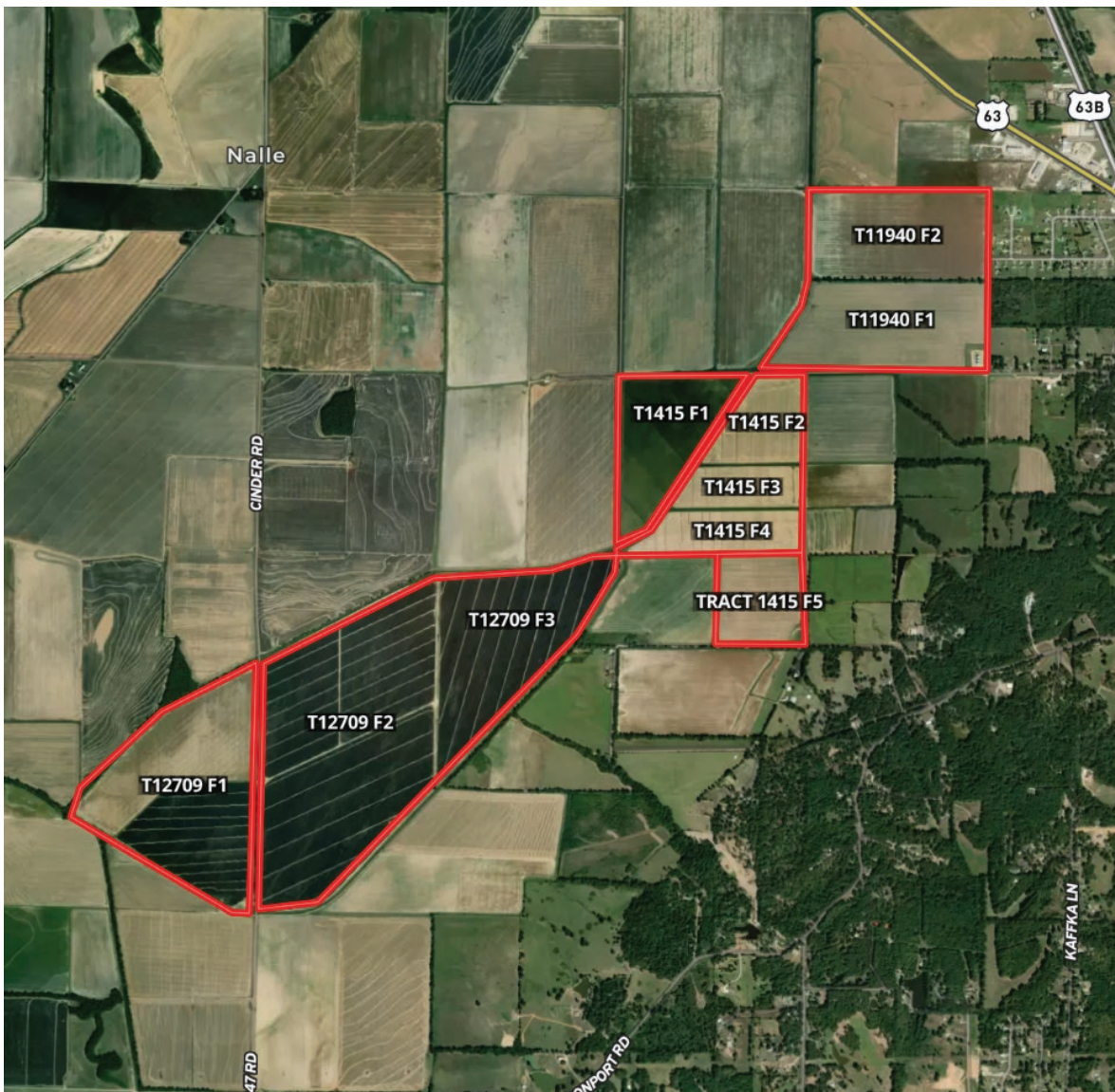




# THE BONO FARM

Craighead County Arkansas

## AERIAL MAP

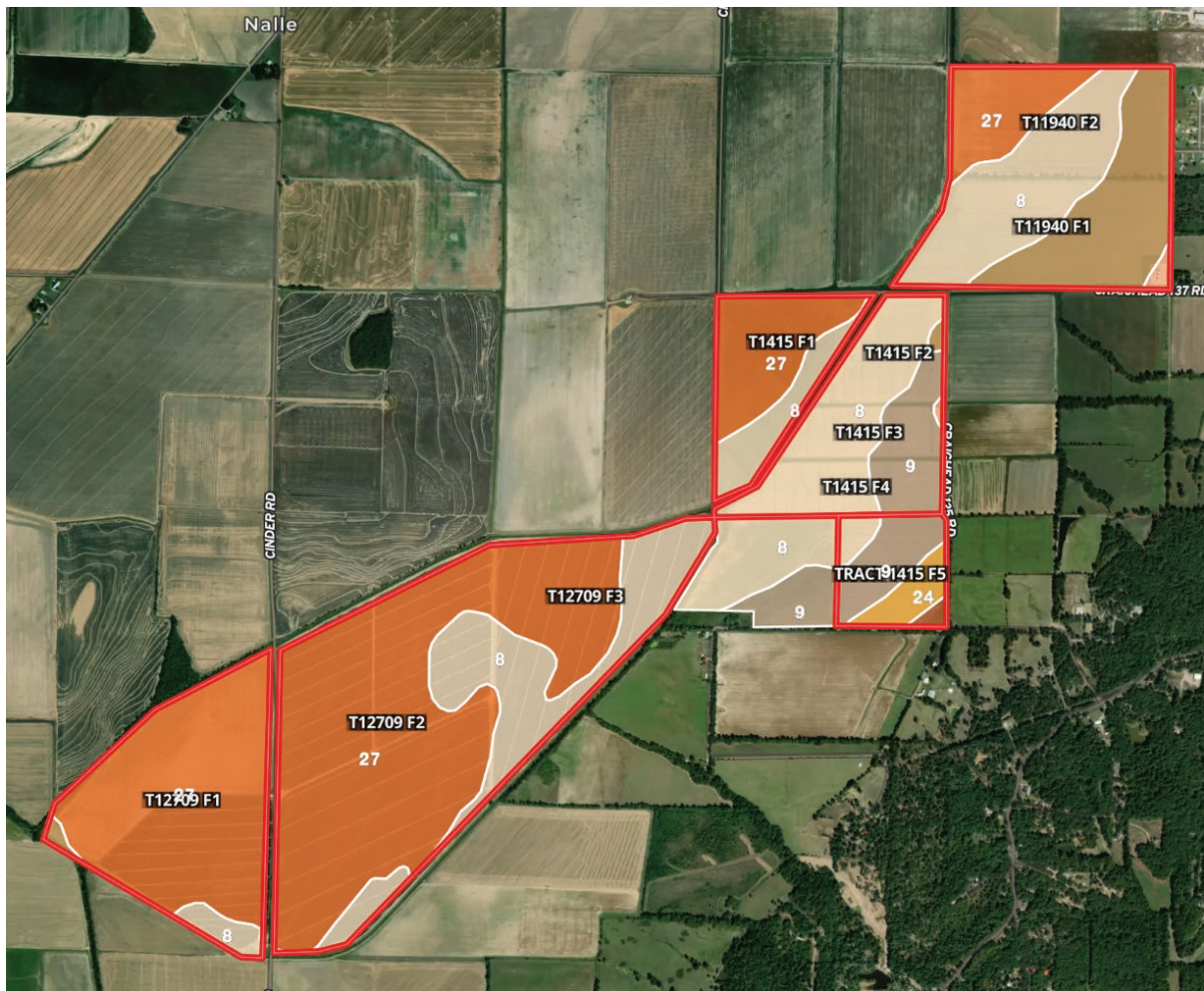




# THE BONO FARM

Craighead County Arkansas

## SOIL MAP



### Soil Code Key

<b>27</b>	Jackport silty clay loam, 0 to 1 percent slopes (428.54 Acres/49.8%)	<b>24</b>	Grenada silt loam, 1 to 3 percent slopes (11.7 Acres/1.36%)
<b>8</b>	Calhoun silt loam (282.31 Acres/32.81%)	<b>10</b>	Calloway silt loam, 1 to 3 percent slopes (3.1 Acres/0.36%)
<b>21</b>	Falaya silt loam, 0 to 1 percent slopes, occasionally flooded, brief duration (67.79 Acres/7.88%)	<b>30</b>	Loring silt loam, 3 to 8 percent slopes, west, upland phase (2.18 Acres/0.25%)
<b>9</b>	Calloway silt loam, 0 to 1 percent slopes (64.97 Acres/7.55%)		





# THE BONO FARM

Craighead County Arkansas

## REGIONAL MAP





# TILLER

CONSULTING | REALTY | DEVELOPMENT

- EST. 2020 -

Thanks for your interest in  
**THE BONO FARM**

Let us know if we can answer any  
questions or if you'd like a property tour.

**BRIAN MACK**

870.919.5945  
BRIAN@TILLERLAND.COM

**KELLY PHIPPS**

870.351.2097  
KELLY@TILLERLAND.COM