

LAND FOR SALE

GOOSE POND ROAD GROVE

0 GOOSE POND ROAD

Ona, FL 33865

PRESENTED BY:

DANIEL LANIER

Senior Advisor

O: 863.648.1528 | C: 863.698.2971

daniel.lanier@svn.com





SALE PRICE

\$320,000

OFFERING SUMMARY

ACREAGE:	37.7 Acres
PRICE / ACRE:	\$8,488
CITY:	Ona
COUNTY:	Hardee
PROPERTY TYPE:	Land: Citrus, Farms & Nurseries Properties, Hemp, Land Other, Nursery, Vegetables

PROPERTY OVERVIEW

Located in Southwestern Hardee County, Goose Pond Road Grove could be the perfect property for a citrus grower or many other types of agricultural uses. The Valencia and Tangerine trees are irrigated with an 8 inch well powered by a John Deere diesel power unit. While half of the grove has mature trees, but the eastern half of the property is set with young Valencia trees. This property would be great to convert to vegetables, hemp, or bamboo or continue the citrus production established on the property.



SPECIFICATIONS & FEATURES

LAND TYPES:	<ul style="list-style-type: none"> • Citrus • Farms & Nurseries Properties • Hemp • Land Other • Nursery • Vegetables
UPLANDS / WETLANDS:	98.9% Uplands
SOIL TYPES:	<ul style="list-style-type: none"> • Zolfo • Tavares and Myakka Fine Sand
TAXES & TAX YEAR:	\$857.47 [2021]
WATER SOURCE & UTILITIES:	8 Inch well with John Deere Diesel Engine
ROAD FRONTAGE:	1,330 ± FT on Goose Pond Road
CURRENT USE:	Citrus Production
WELLS INFORMATION:	8 inch well with John Deere diesel engine
INCOME FEATURES:	Valencia and Tangerine crop
IRRIGATION:	Microjets under the trees



LOCATION & DRIVING DIRECTIONS

PARCEL:

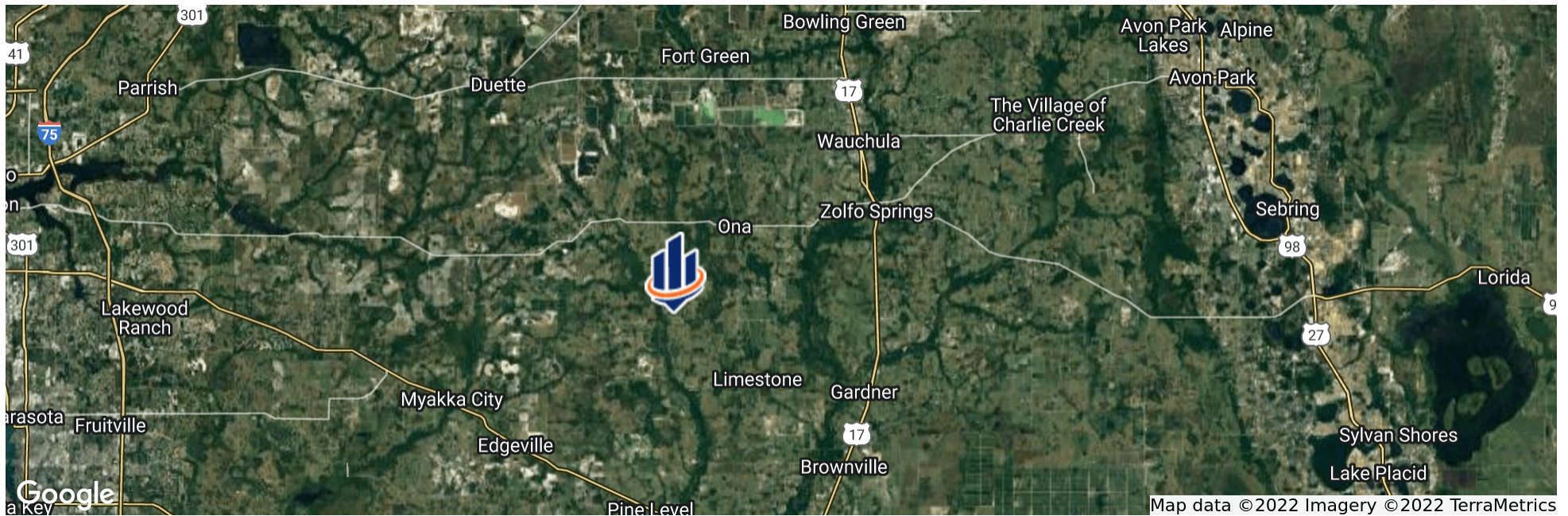
24-35-23-0000-09620-0000

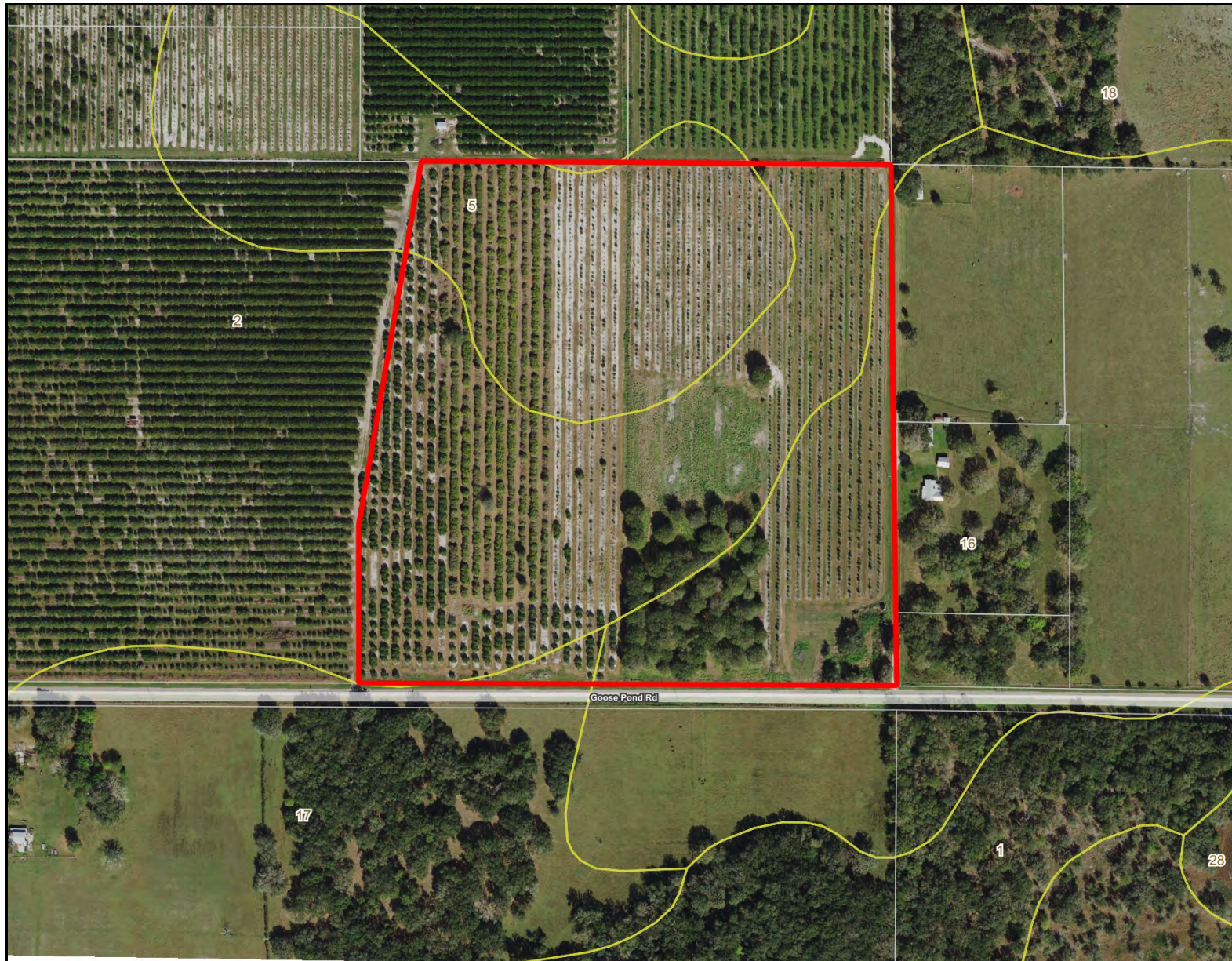
GPS:

27.4111272, -81.9696756

DRIVING DIRECTIONS:

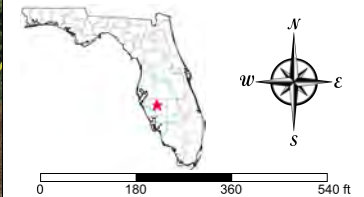
- From Ona, South on Post Plant Road 5.8 miles
- Turn East onto Goose Pond Road
- The Property is on the North side of the road 1/4 mile from the Intersection of Post Plant Road and Goose Pond Road.



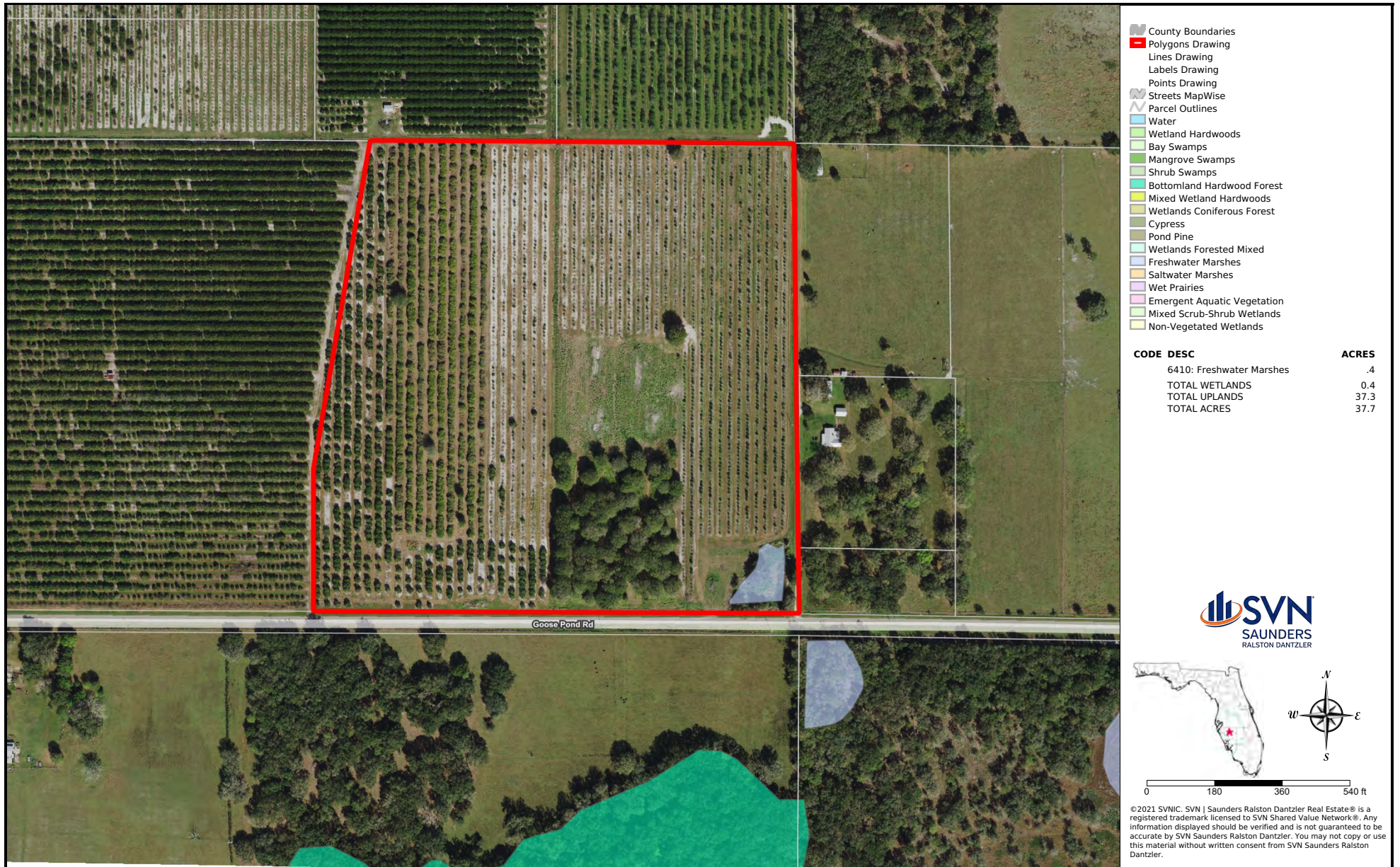


- County Boundaries
- Polygons Drawing
- Lines Drawing
- Labels Drawing
- Points Drawing
- Streets MapWise
- Parcel Outlines
- Soils Boundaries

CODE	DESC	ACRES
2	Zolfo Fine Sand	19
5	Tavares Fine Sand, 0 To 5 Percent Slopes	11
16	Myakka Fine Sand	8
17	Smyrna Sand	0
TOTAL = 37.6726629743828 acres		



©2021 SVN. SVN | Saunders Ralston Dantzler Real Estate® is a registered trademark licensed to SVN Shared Value Network®. Any information displayed should be verified and is not guaranteed to be accurate by SVN Saunders Ralston Dantzler. You may not copy or use this material without written consent from SVN Saunders Ralston Dantzler.





HARDEE COUNTY
FLORIDA

FOUNDED	1921	DENSITY	42.2 [2019]
COUNTY SEAT	Wauchulla	POPULATION	26,937 [2019]
AREA	637 sq mi	WEBSITE	hardeecounty.net

Located in West Central Florida, Hardee County is home to a population of 102k people. The serene Peace River offers “Old Florida” recreation like fossil hunting, kayaking, and canoeing. Hardee County is situated amid large phosphate deposits in an area known as “Bone Valley.” Phosphate mining is a significant industry, and a leading employer is The Mosaic Company, a Fortune 500 company with headquarters in Tampa. The Mosaic company currently owns all the mining land in Hardee County.

According to Data USA, Hardee County’s economy, FL employs 32,800 people, with an unusually high number of employees in the Farming, Fishing, & Forestry Occupations [6.35 times higher than expected]. The highest paying industries by median earnings are Mining, Quarrying, & Oil & Gas Extraction [\$88,194], Finance & Insurance [\$47,625], and Public Administration [\$40,925].



1723 Bartow Rd
Lakeland, Florida 33801
863.648.1528

125 N Broad Street, Suite 210
Thomasville, Georgia 31792
229.299.8600

356 NW Lake City Ave
Lake City, Florida 32055
386.438.5896

www.SVNsaunders.com

All SVN® Offices Independently Owned & Operated | 2022 All Right Reserved

©2021 SVN | Saunders Ralston Dantzler Real Estate. All SVN® Offices Independently Owned and Operated SVN | Saunders Ralston Dantzler Real Estate is a full-service land and commercial real estate brokerage with over \$3 billion in transactions representing buyers, sellers, investors, institutions, and landowners since 1996. We are recognized nationally as an authority on all types of land, including agriculture, ranch, recreation, residential development, and international properties. Our commercial real estate services include marketing, property management, leasing and tenant representation, valuation, business brokerage, and advisory and counseling services for office, retail, industrial, and multi-family properties. Our firm also features an auction company, forestry division, international partnerships, hunting lease management, and extensive expertise in conservation easements. Located at the center of Florida's I-4 corridor, we provide proven leadership and collaborative expertise backed by the strength of the SVN® global platform. To learn more, visit SVNsaunders.com.

