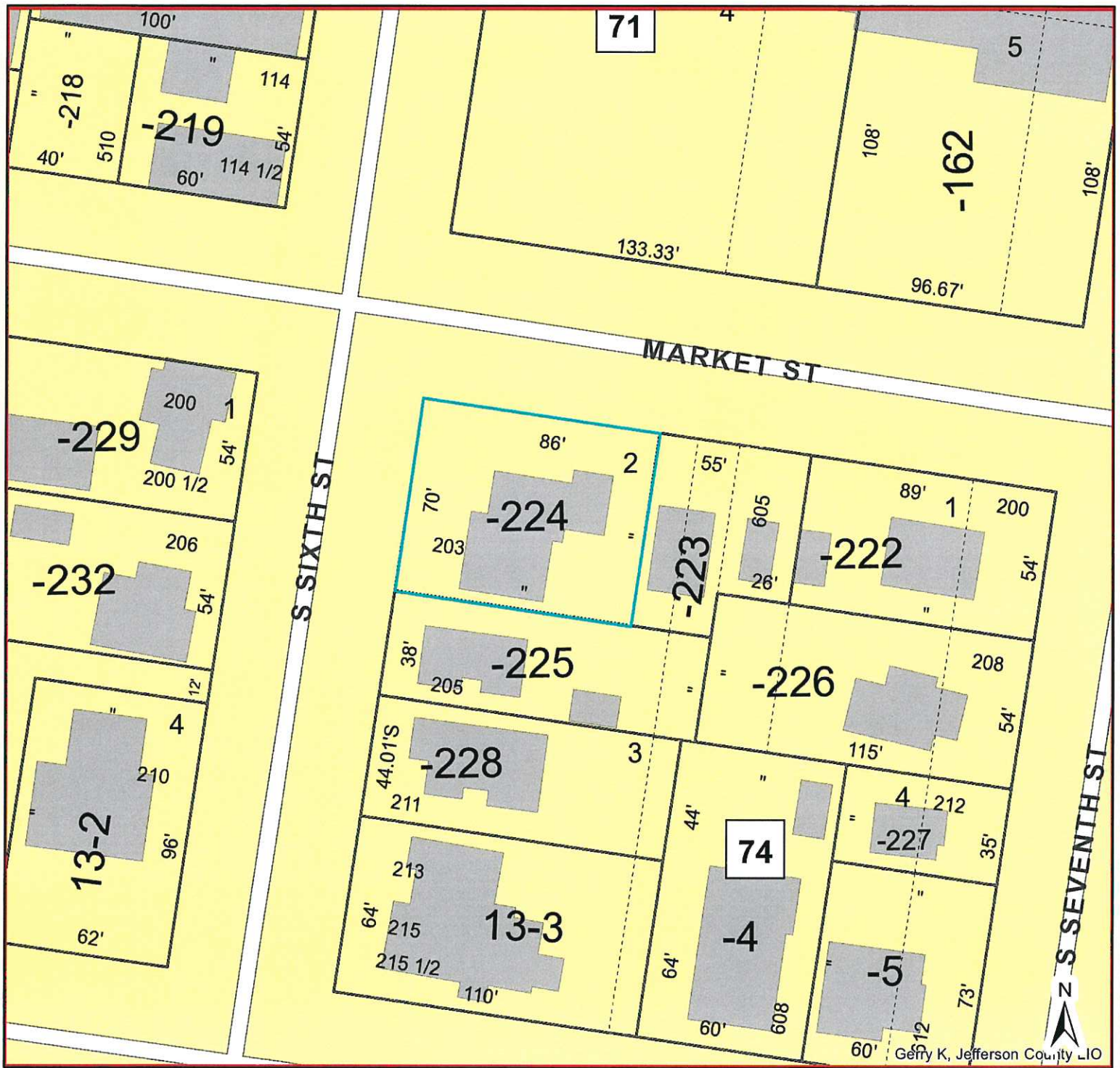
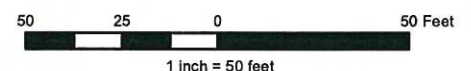


Jefferson County Land Information



- | | | | | |
|--|-----------------------|---|--------------------|-------------|
| | Description | — | Rail Right of Ways | Tax Parcels |
|  | Municipal Boundaries | — | Road Right of Ways | |
| Parcel Lines | | — | Section Lines | |
| — | Property Boundary | — | Surface Water | |
| --- | Old Lot/Meander Lines | — | Map Hooks | |



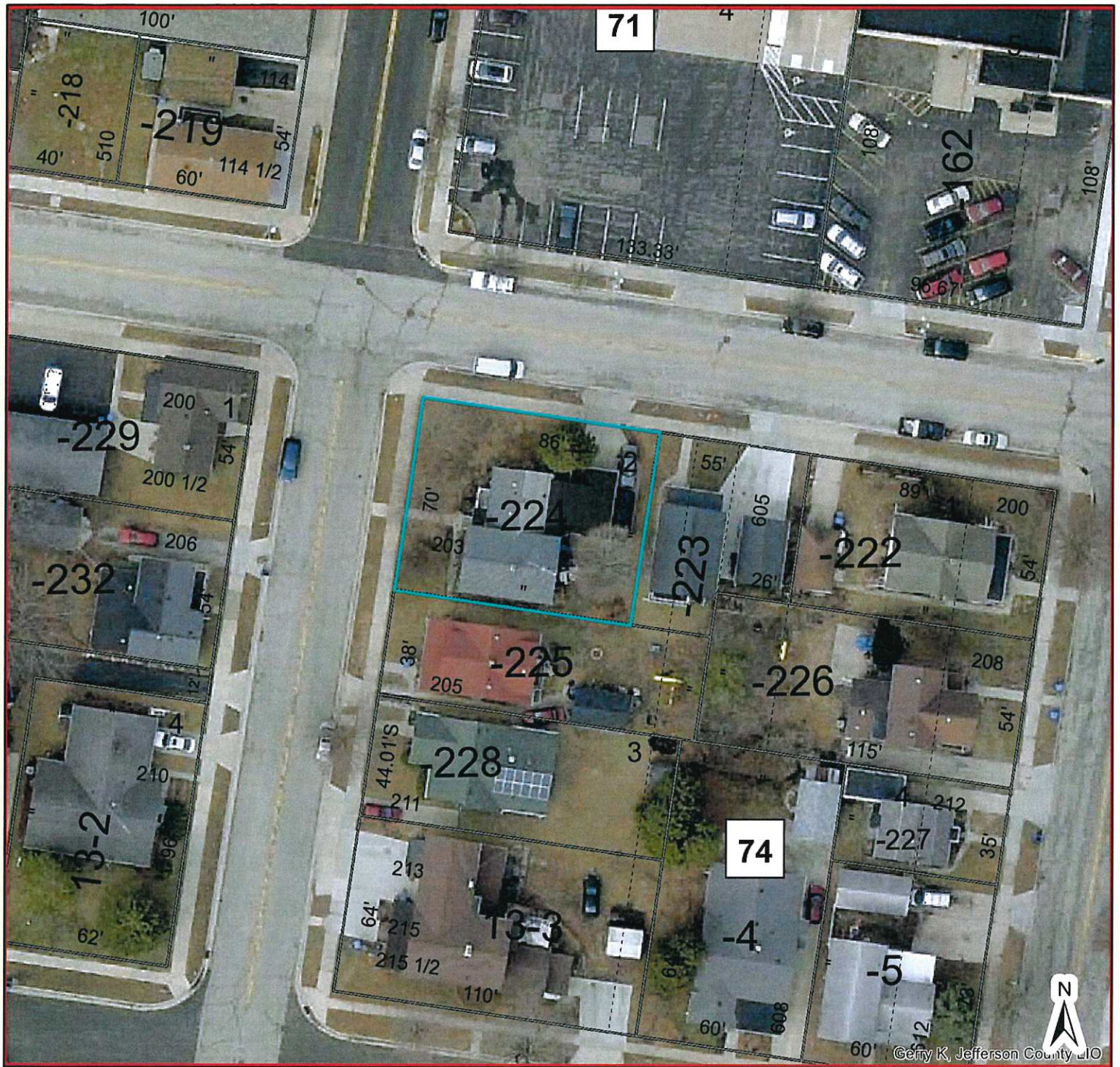
Jefferson County Geographic Information System

DISCLAIMER: This map is not a substitute for an actual field survey or onsite investigation. The accuracy of this map is limited to the quality of the records from which it was assembled. Other inherent inaccuracies occur during the compilation process. Jefferson County makes no warranty whatsoever concerning this information.

Printed on: February 8, 2022

Author: Public User

Jefferson County Land Information



Description	Rail Right of Ways	Tax Parcels
Municipal Boundaries	Road Right of Ways	raster.SDE.ORTHOS_2018
Parcel Lines	Section Lines	Red: Band_1
Property Boundary	Surface Water	Green: Band_2
Old Lot/Meander Lines	Map Hooks	Blue: Band_3

50 25 0 50 Feet
1 inch = 50 feet

Jefferson County Geographic Information System

DISCLAIMER: This map is not a substitute for an actual field survey or onsite investigation. The accuracy of this map is limited to the quality of the records from which it was assembled. Other inherent inaccuracies occur during the compilation process. Jefferson County makes no warranty whatsoever concerning this information.

Printed on: February 8, 2022
Author: Public User