



143 +/- ACRE DRYLAND FARM FURNAS COUNTY, NEBRASKA

Furnas10-2

PRICE - \$380,000



JEFF MOON, ALC
Farm & Ranch Specialist
Holdrege, Nebraska
308.627.2630
Jeff.Moon@AgWestLand.com

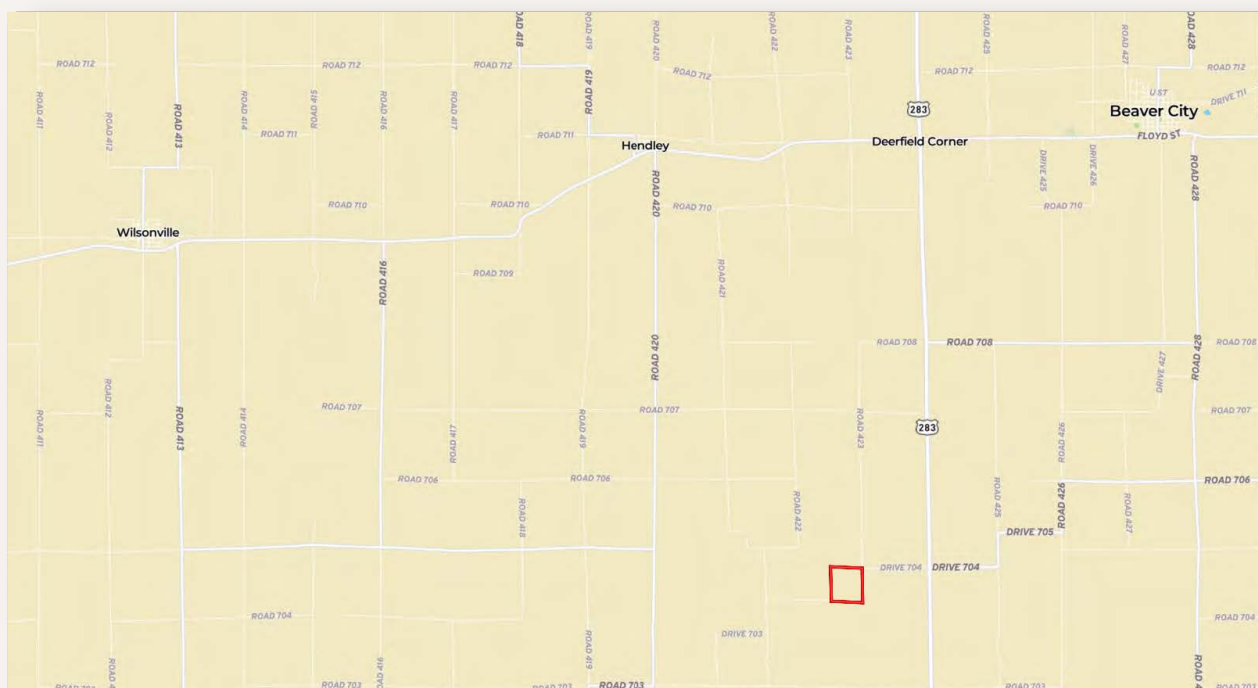
Very nice dryland farm with great access and high-quality soils. This parcel offers great recreational habitat with the Sappa Creek running through it. Subject to 2022 cash rent farming and 2022-2023 hunting lease. Take advantage of this one-of-a-kind property!

Total Acres (Per Assessor) - 143.00 +/-
Dryland Acres - 116.00 +/-
Grassland Acres - 6.00 +/-
Other Acres - 21.00 +/-

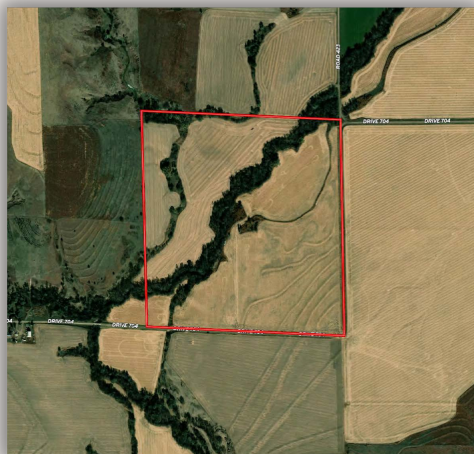
Real Estate Taxes - \$2,040.56

Legal Description - S1/2NE1/4 & N1/2SE1/4 Section 21 Township 1 North, Range 23 West in Furnas County, Nebraska

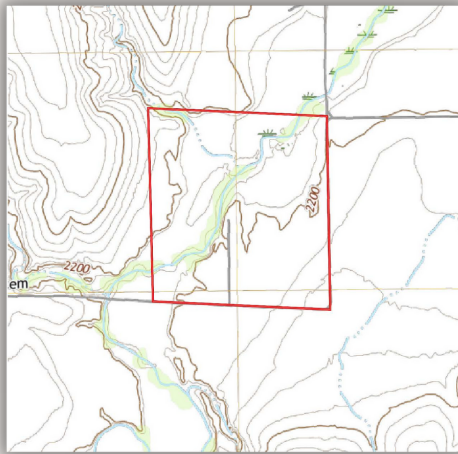
Property Directions - From the intersection of Hwy 89 and Hwy 283, travel south approximately 6 miles to Road 705. Head west 1 mile on Road 705 to the "T" intersection. The farm will be on the southwest corner of the intersection of Road 705 and Road 423.



AERIAL MAP



TOPOGRAPHY MAP



SOILS MAP



The information contained herein is as obtained by AgWest Land Brokers LLC—Holdrege, NE from the owner and other sources. Even though this information is considered reliable, neither broker nor owner make any guarantee, warranty or representation as to the correctness of any data or descriptions. The accuracy of such statements should be determined through independent investigation made by the prospective purchaser. This offer for sale is subject to prior sale, errors and omissions, change of price, terms or other conditions or withdrawal from sale in whole or in part, by seller without notice and at the sole discretion of seller. Readers are urged to form their own independent conclusions and evaluations in consultation with legal counsel, accountants, and/or investment advisors concerning any and all material contained herein. Maps are for illustrative purposes only and are not intended to represent actual property lines.