



Land Sales Specialists

Setting the trend for how Real Estate is sold in the Midwest.

www.BarnesRealty.com

18156 Hwy 59
Mound City, MO 64470
(660) 442-3177

1711 Oregon
Hiawatha, KS 66434
(785) 742-4580

1708 Prairie View Rd, Suite B
Platte City, MO 64079
(816) 219-3010

14 Acres +/- Riverfront, Nodaway County, MO

Here is an opportunity to own your personal timbered getaway! It's almost ALL timber and is loaded with deer and turkeys, and who knows how many mushrooms?

It has got a lot of Nodaway River frontage, too!

LOCATION:

This timbered riverfront tract is located on the East side of the Nodaway River about mid-way between Elmo, MO. and Clearmont, MO.

PRICE:

\$4,995.00/acre or \$69,930.00 total

TAXES/TAXABLE ACRES:

Taxes are to be determined

RENTAL STATUS:

Property is available at the time of closing.

ACCESS FROM ROAD:

There is a 20 ft deeded shared access from 140th St/Eagle Road

LISTING AGENT:

Garrett Barnes
(660) 851-1495 or Garrett@barnesrealty.com



BROKER PARTICIPATION:

Barnes Realty Company, as listing Broker, will gladly and fully cooperate with most licensed Real Estate Brokers to obtain a sale of the property on terms satisfactory to the current Owners. Brokers should call our office for details of our Co-Brokerage Policy.

Setting the trend for how Real Estate is sold in the Midwest.

This information is thought to be accurate; however, it is subject to verification and no liability for error and omissions is assumed. Barnes Realty has made every effort to present accurate information on the property presented. Most of the information comes from outside sources:

County/Government/Seller and human error can occur. It's the Buyer's responsibility to satisfy himself with the information presented and to determine the information to be true and accurate and the property to be suited for his intended use. The listing may be withdrawn with or without approval. The Seller further reserves the right to reject any and all offers.

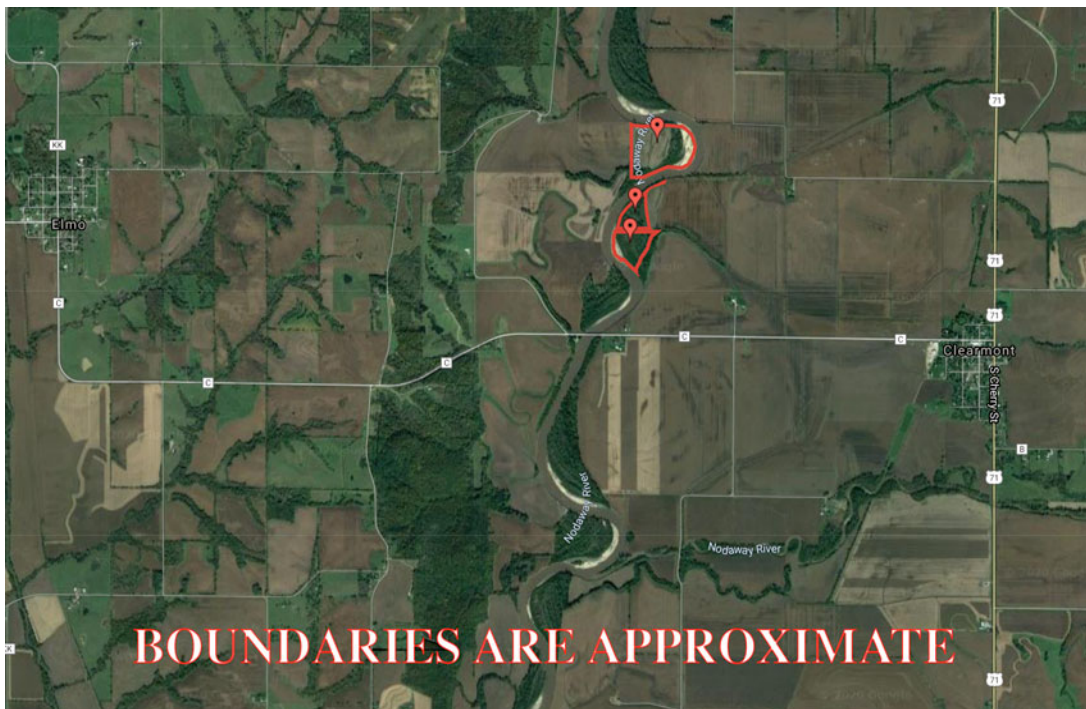
All inquiries, inspections, appointments, and offers must be sent through:

RICK BARNES, BROKER, BARNES REALTY COMPANY, 18156 HWY 59, MOUND CITY, MO 64470 PHONE NUMBER: 1-660-442-3177.

14 Acres +/- Riverfront, Nodaway County, MO
Google Aerial Map



General Location Map



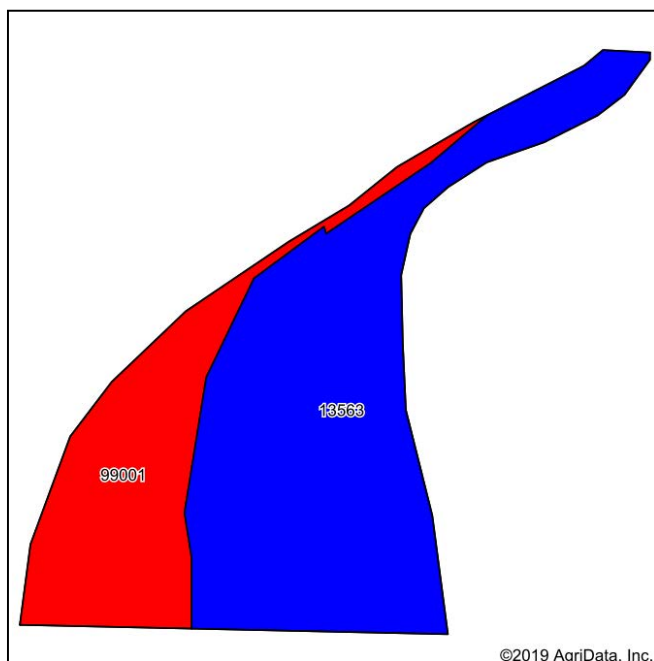
14 Acres +/- Riverfront, Nodaway County, MO
Driving Map



14 Acres +/- Riverfront, Nodaway County, MO

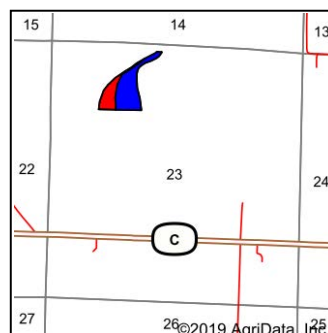
Soil Map

Soils Map



Soils data provided by USDA and NRCS.

©2019 AgriData, Inc.



State: **Missouri**
 County: **Nodaway**
 Location: **23-66N-37W**
 Township: **Atchison**
 Acres: **14**
 Date: **6/3/2020**



Maps Provided By:



© AgriData, Inc. 2019
 www.AgrIDataInc.com



Area Symbol: MO147, Soil Area Version: 20									
Code	Soil Description	Acres	Percent of field	Non-Irr Class Legend	Non-Irr Class *c	*n NCCPI Overall	*n NCCPI Corn	*n NCCPI Small Grains	*n NCCPI Soybeans
13563	Nodaway silt loam, 0 to 2 percent slopes, occasionally flooded	9.59	68.5%		IIw	96	96	59	92
99001	Water	4.41	31.5%		VIII		0	0	0
Weighted Average						*n 65.8	*n 65.8	*n 40.4	*n 63

*n: The aggregation method is "Weighted Average using major components"

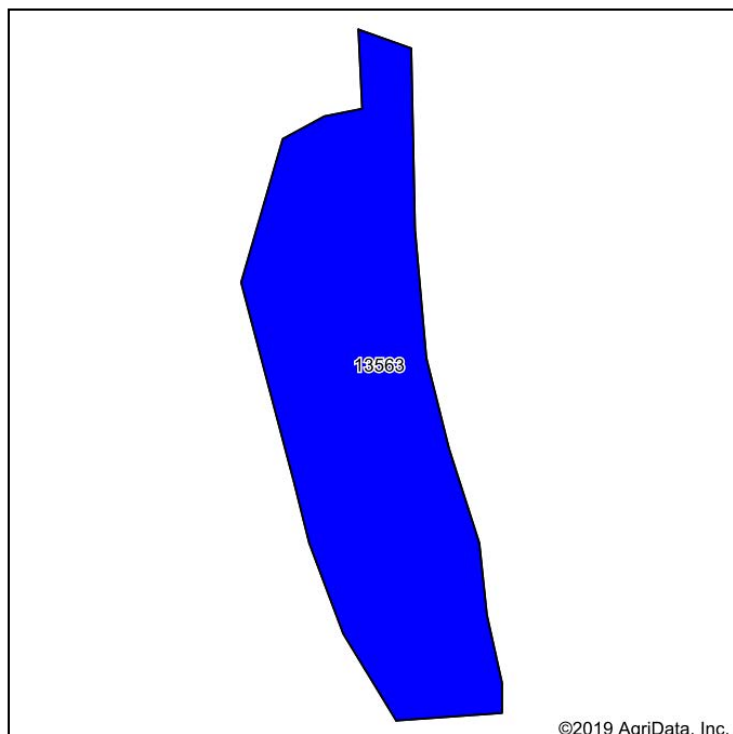
*c: Using Capabilities Class Dominant Condition Aggregation Method

Soils data provided by USDA and NRCS.

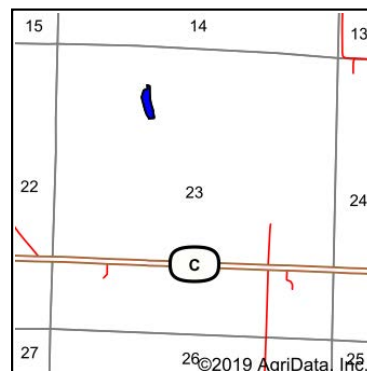
14 Acres +/- Riverfront, Nodaway County, MO

Soil Map Tillable

Soils Map



Soils data provided by USDA and NRCS.



State: **Missouri**
 County: **Nodaway**
 Location: **23-66N-37W**
 Township: **Atchison**
 Acres: **1.83**
 Date: **6/3/2020**



Maps Provided By:



© AgriData, Inc. 2019

www.AgriDataInc.com



Area Symbol: MO147 Soil Area Version: 20									
Code	Soil Description	Acres	Percent of field	Non-Irr Class Legend	Non-Irr Class *c	*n NCCPI Overall	*n NCCPI Corn	*n NCCPI Small Grains	*n NCCPI Soybeans
13563	Nodaway silt loam, 0 to 2 percent slopes, occasionally flooded	1.83	100.0%		IIw	96	96	59	92
Weighted Average						*n 96	*n 96	*n 59	*n 92

*n: The aggregation method is "Weighted Average using major components"

*c: Using Capabilities Class Dominant Condition Aggregation Method

Soils data provided by USDA and NRCS.

14 Acres +/- Riverfront, Nodaway County, MO
Aerial Photos

