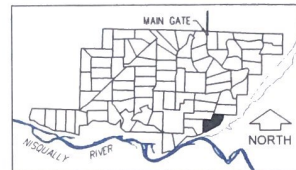


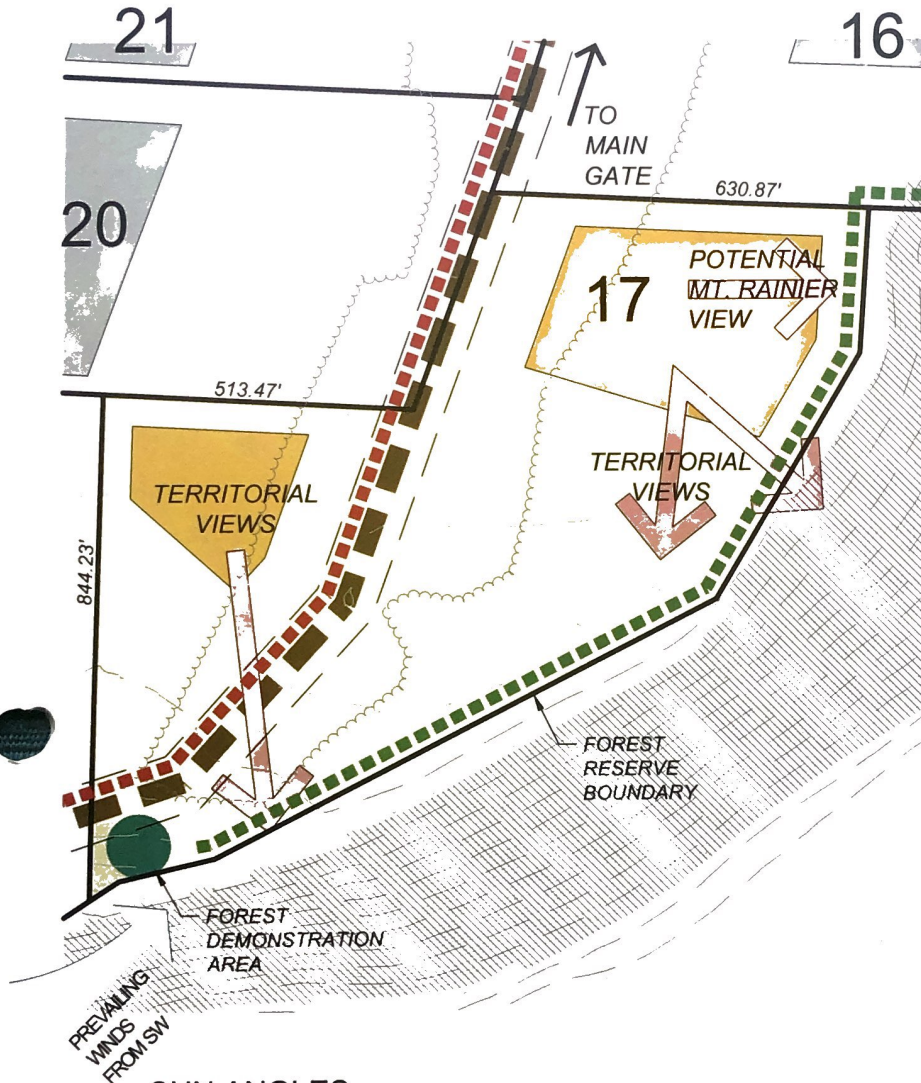


# HOMESITE 17

20.01 ACRES



KEY MAP



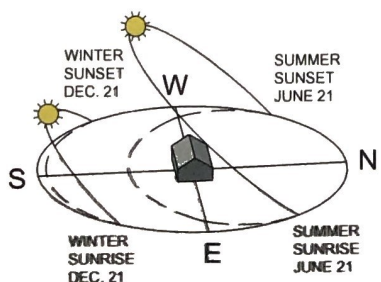
## SITE FEATURES:

- POTENTIAL TERRITORIAL & MT. RAINIER VIEWS
- EXCELLENT USABLE SPACE DUE TO SHAPE & TOPOGRAPHY
- MULTIPLE POTENTIAL BUILDING AREAS
- MULTIPLE FOREST STANDS

## LEGEND

- LOT LINE
- EASEMENT LINE
- POTENTIAL HOME BUILDING AREA
- NEIGHBORING HOME BUILDING AREA (POTENTIAL)
- POTENTIAL VIEWS
- PRIMARY OR SECONDARY ROAD
- MULTI-PURPOSE TRAIL
- FOOTPATH
- STEEP TOPOGRAPHY (>30%)

## SUN ANGLES



## NOTES:

1. HOMESITE AREAS HIGHLIGHT POTENTIAL BUILDING AREAS. INVESTORS ARE ENCOURAGED TO FIELD VERIFY THEIR BUILDING NEEDS IN THE FIELD.
2. IN ADDITION, INVESTORS ARE ENCOURAGED TO FIELD VERIFY:
  - > WETLAND TYPES, BOUNDARIES AND ASSOCIATED BUFFERS
  - > STEEP SLOPES
  - > PROPERTY BOUNDARIES, EASEMENTS AND SETBACKS
  - > ACCESS TO SUBJECT PROPERTY TO MEET THEIR SPECIFIC NEEDS
3. GRADE CONTOUR INTERVAL: 5' ELEVATION INCREMENTS.
4. PLEASE CONSULT APPLICABLE ASSOCIATION CC&R'S AND LOCAL LAND USE REGULATIONS.



Weyerhaeuser Real Estate  
Development Company



A Forest Reserve Community