



FARM & RANCH

52-ACRE TRACT, WITH A NEW HUNTING CABIN

572 Co Road 342 – Ranger, TX



STEPHEN
REICH GROUP
WILLIAMS TREW REAL ESTATE

WilliamTrew[☆]
A DIVISION OF EBBY HALLIDAY REAL ESTATE, INC.

LISTED BY **STEPHEN REICH GROUP** OF WILLIAMS TREW REAL ESTATE

PROPERTY SUMMARY

DESCRIPTION

This 52-acre tract, with a new hunting cabin, is situated just north of Ranger and is the perfect getaway place to hunt, fish or just relax. The dense cover this place provides is the perfect habitat for Deer, Hogs, Turkey, and Quail. There is a large stock tank on this property that is heavily stocked with largemouth bass for the fisherman in anybody. In addition to the abundance of fish in this tank, it also has been an excellent duck hunting location. The new, 400 square foot hunting cabin comes complete with all of the necessary amenities. The water well and septic are new and the cabin will convey with all furnishings as it sits now.

LOCATION

CITY	Ranger
County	Eastland
Schools	Ranger ISD

Driving Directions Going west on I 20, exit SH-254 Loop W. In 3.5 mi turn right on W Main. Right on Lakeside. Keep right onto Westland. Left on Sunset. Slight left on Wayland and property will be on your left in 1.3 mi.

OFFER SUMMARY

List Price	\$499,000
Lot Size	52.96 acres
Utilities	Septic, Well, Co-op Electric

HIGHLIGHTS

- 52.96 ACRES
- NEW 400 SF CABIN
- LARGE HEAVILY STOCKED TANK
- NEW WATER WELL & SEPTIC
- HUNT, FISH OR JUST RELAX
- DEER, HOG, TURKEY, QUAIL, DUCK

LISTING PRESENTED BY:



STEPHEN REICH
817-597-8884
stephen.reich@williamstrew.com



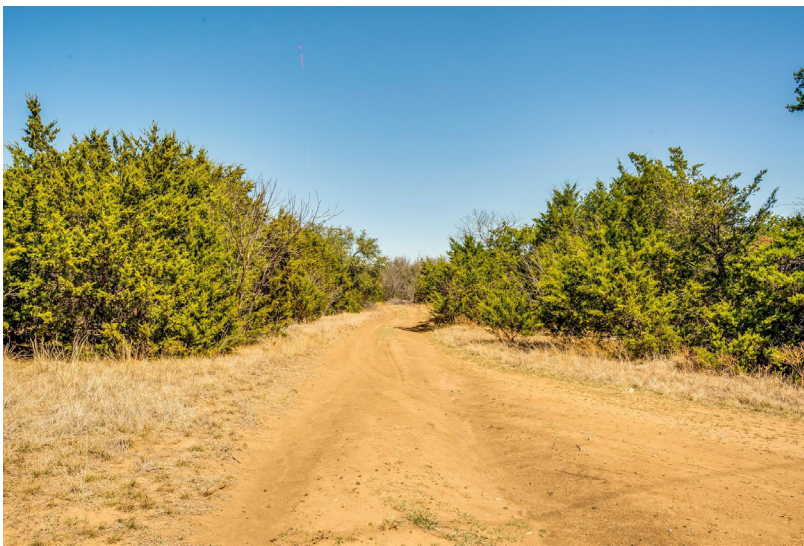
PROPERTY WEBSITE LINK:
stephenreichgroup.com/20021633



PARKER COUNTY OFFICE
400 Shops Boulevard, Ste. 200
Willow Park, TX 76087

FARM & RANCH • RESIDENTIAL • COMMERCIAL-DEVELOPMENT • LAND

PROPERTY PHOTOS



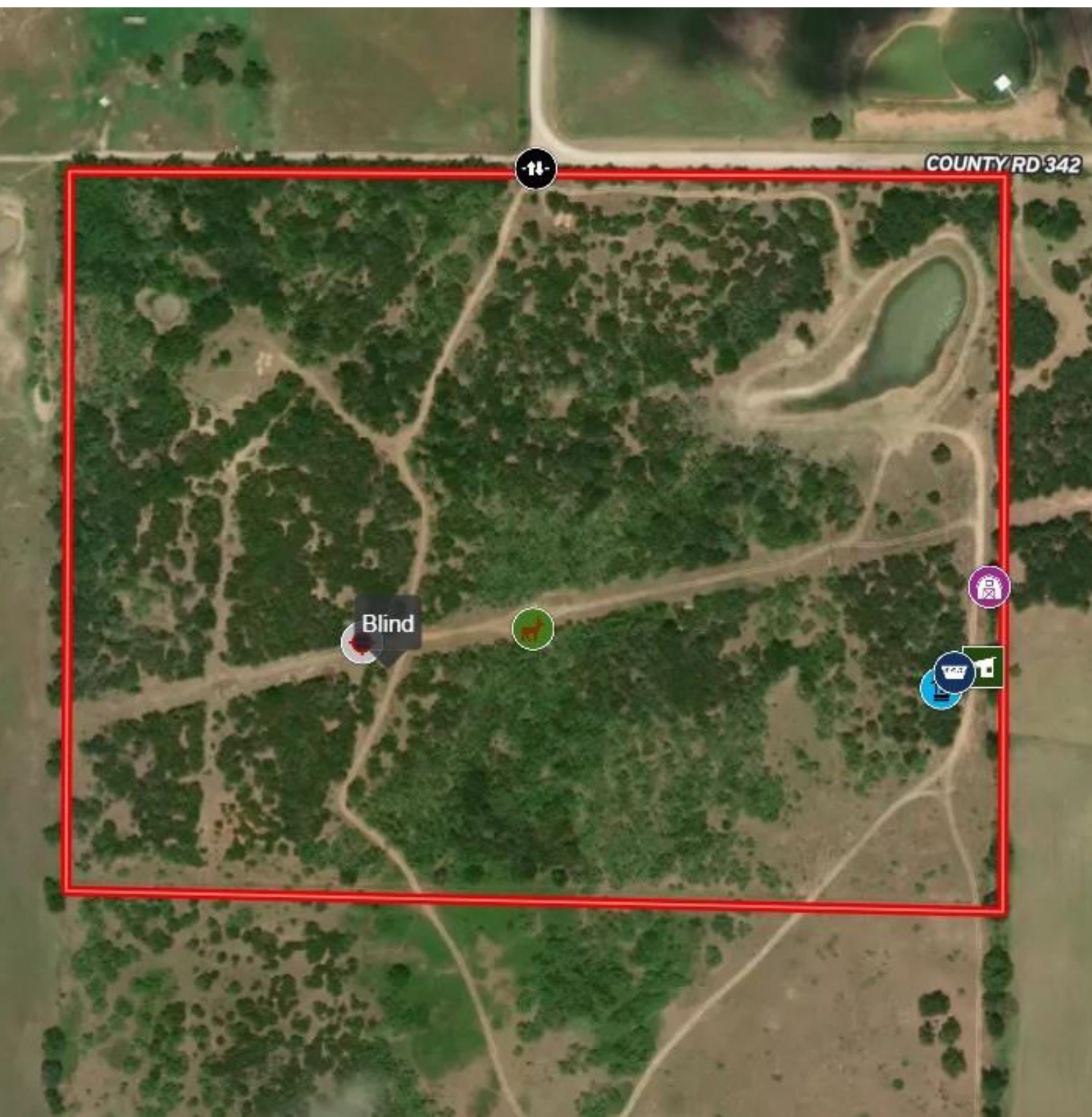
PROPERTY PHOTOS



STEPHEN REICH – 817.597.8884



AERIAL MAP



CONTOUR LINES & FLOODPLAIN

