



# SPRING 2022 AUCTION

*No Starting Bids and No Hidden Reserves!*

## GreenGold Timberland

***50± Acre Drift Creek Tract with 1.6± Million Board Feet  
Lincoln County, Oregon***



- *Near term cash flow from harvest of primarily 60 year old Douglas-fir*
- *Strategic location with proximity to both coastal and Willamette Valley log markets*
- *Highly productive Douglas-fir growing Site Class I*
- *February 2022 Cruise Report by Northwest Forestry Resources*

**PUBLISHED RESERVE: \$730,000**

**SEE BACK FOR MAP AND ADDITIONAL INFORMATION**

**Sealed Bids Due: June 8, 2022**

*Broker Cooperation Invited*

**Color Catalog #2202 and Bid Package #125 available by contacting**

**1-800-845-3524**

*or info@rmnrw-auctions.com*

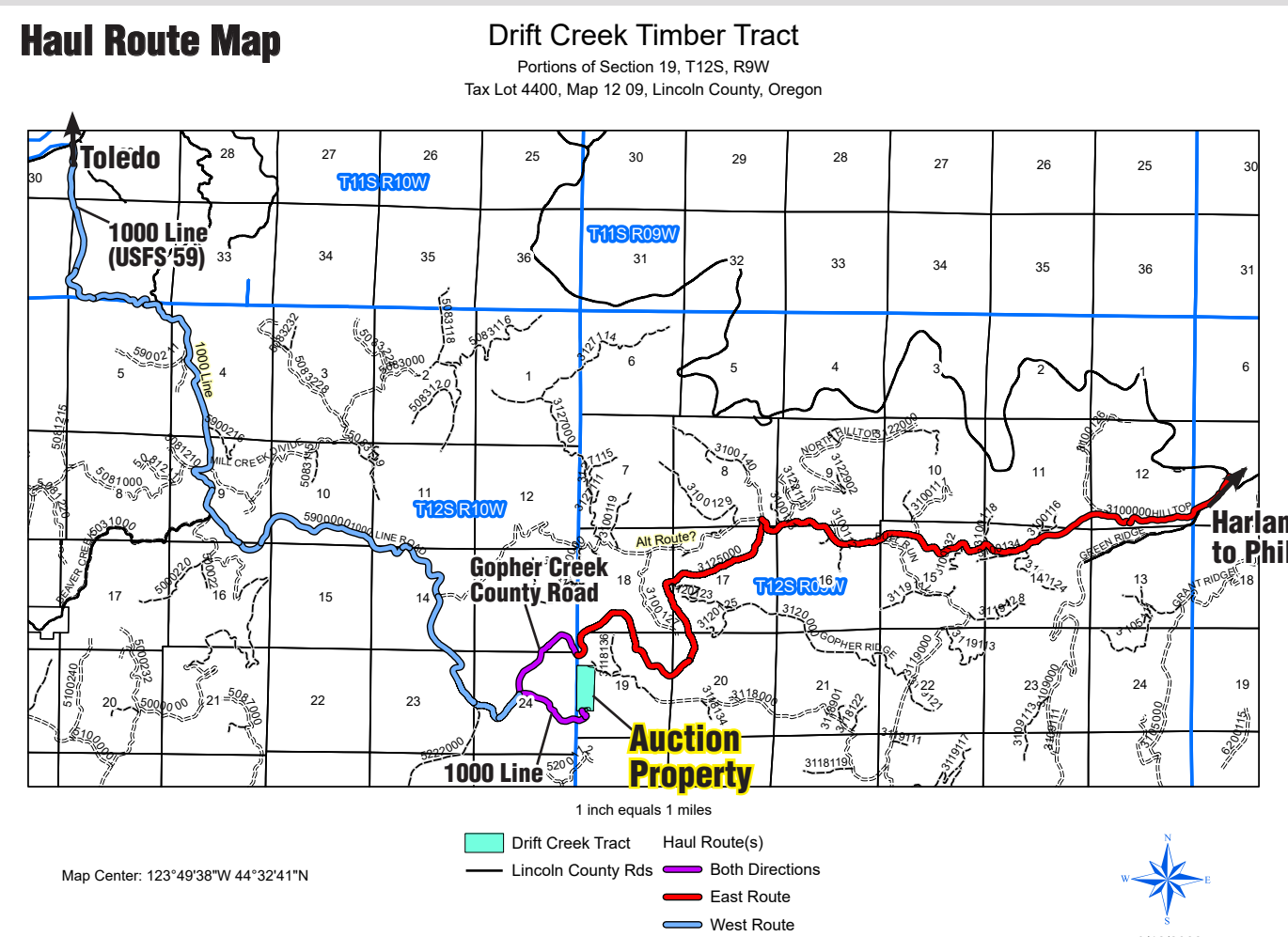


*Auction Conducted By:*

**Realty Marketing/Northwest**

*2310 NW Everett St. Suite 250, Portland, Oregon 97210*





Adjoining owners are Siuslaw National Forest and Weyerhaeuser.  
Easement to haul routes east to Harlan and northwest to Toledo



| CRUISE SUMMARY – LOG SORT BY SPECIES (Net MBF) |          |          |          |         |           |       |
|--|----------|----------|----------|---------|-----------|-------|
|  | Oversize | 12” + 2S | 8” - 11” | 5” – 7” | 3S – 12”+ | Total |
| DF   | 65       | 632      | 289      | 100     | 4         | 1,090 |
| WH   | 52       | 50       | 16       | 8       | 16        | 142   |
| RA   | --       | 115      | 226      | 115     | --        | 456   |
| Total  | 117      | 797      | 531      | 223     | 20        | 1,688 |

February 2022 Cruise Report Available in Bid Package

Sealed Bids Due: June 8, 2022

Broker Cooperation Invited

Color Catalog #2202 and Bid Package #125 available by contacting

1-800-845-3524  
or info@rmnrw-auctions.com

Preferred Lender

