



# Axis Draw Meadows 105.35 Acres



Located in southwestern Edwards county  
Less than 15 minutes from Rocksprings  
Very easy access with highway frontage  
Electricity is very close

The terrain is very gentle rolling with nice bottoms

Great soil for several food plot possibilities

Good trail system all through the property leading to several spots for blinds and feeders

Nice views on several high points of the property

Lots of large oak trees and oak tree thickets

Some clearing has been done opening up good areas of the property

Plenty of good cover and vegetation

Large neighbor to the north of the property

Lots of axis in the area as well as whitetail, turkey, hogs

Ag exempt taxes \$405,000 Listing #191

## Western Hill Country Realty

[www.westernhillcountryrealty.com](http://www.westernhillcountryrealty.com)

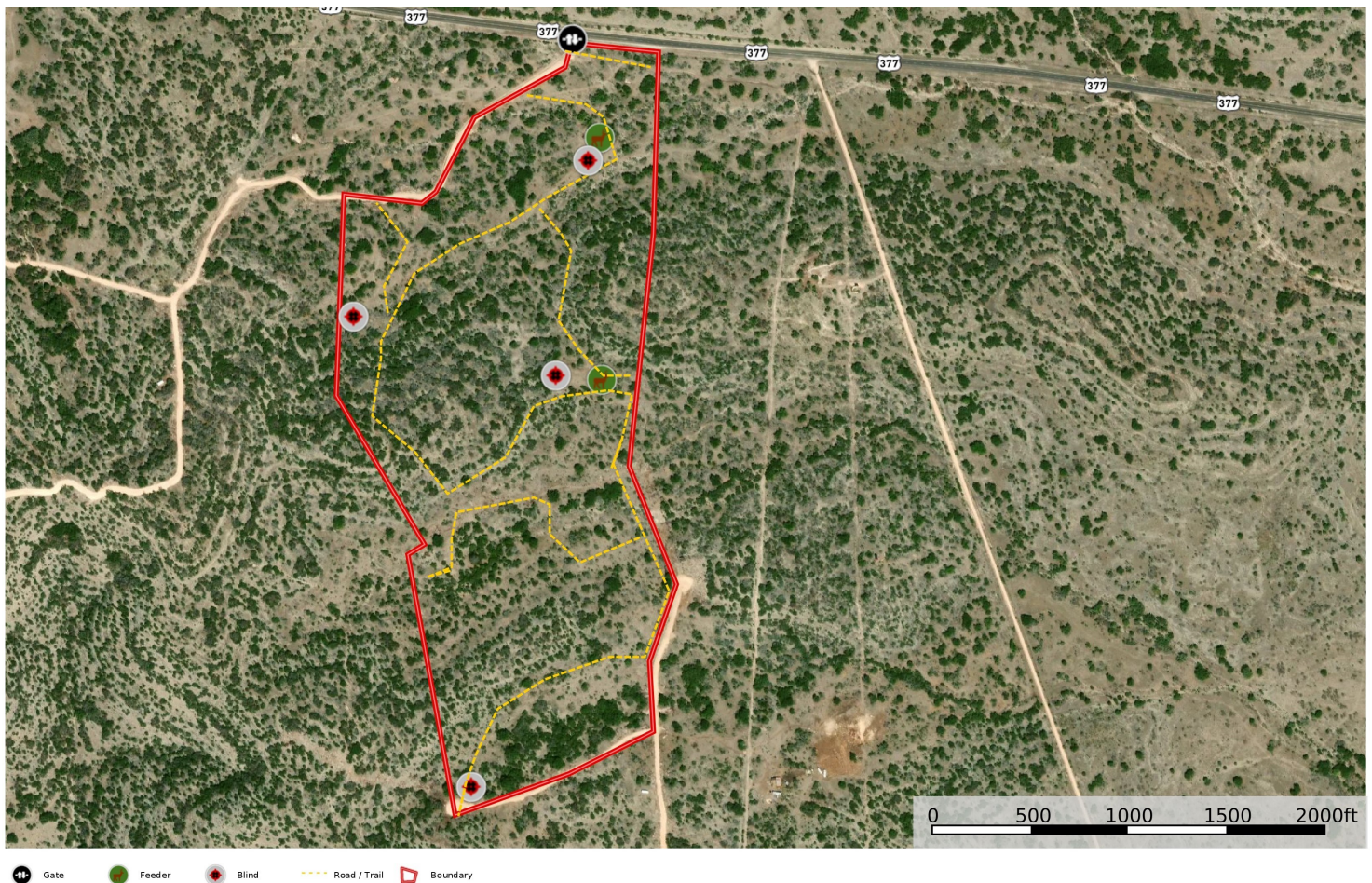
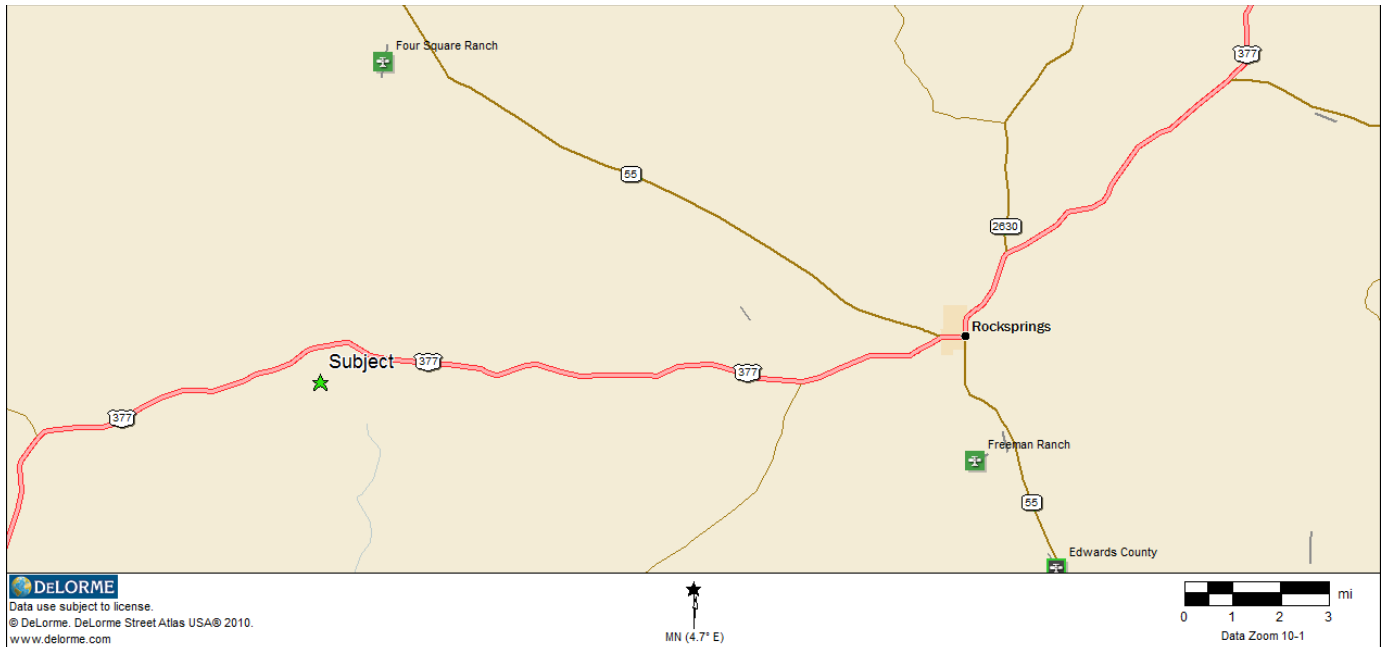
[info@westernhillcountryrealty.com](mailto:info@westernhillcountryrealty.com)

830-683-4435





# Axis Draw Meadows 105.35 Acres



## Western Hill Country Realty

[www.westernhillcountryrealty.com](http://www.westernhillcountryrealty.com)

[info@westernhillcountryrealty.com](mailto:info@westernhillcountryrealty.com)

830-683-4435





# Axis Draw Meadows 105.35 Acres



**Western Hill Country Realty**

[www.westernhillcountryrealty.com](http://www.westernhillcountryrealty.com)

[info@westernhillcountryrealty.com](mailto:info@westernhillcountryrealty.com)

830-683-4435