



**AlabamaLandAgent.com**

**Land • Farms • Lake Property**

**Chad Camp  
205-478-4974**



**578+/- ACRES**

**\$2,261,000**

**Jeff & St. Clair County, AL ~ GPS 33.762205, -86.564388-**

*Waterfalls on Big Canoe Creek - 578+/- Acres of land for sale in Alabama with Trail Riding, Hunting, Home Sites and Nature Sight Seeing Adventures. Reminiscent of the Smokey Mountains. Deer and Turkey Hunting. 5 Miles of Trails throughout the Property & 7 Green Fields. Over 7,000 Ft of Big Canoe Creek and 2,000+/- on Bear Brush Branch. Creeks are moss rock and pebble sandy bottoms. Large Rocky Bluff Shelves. This borders Camp Tekawitha and Zamora Temple Camp. Beautiful Mature Hardwoods throughout the property. Lower section is accessed from Deer Haven Road. Upper section is accessed off Carroll Dr which is off Mize Drive. Could be a Conservation Easement for someone or Multi-Generational Compound for multiple families. Possibly a Business Retreat with long-term investment potential. It's only 40 Minutes from Downtown Birmingham Alabama and makes this very convenient for afternoon trips. 2 Hours away from Atlanta Georgia and Chattanooga Tennessee. Appointment Only with an Agent.*

**Chad Camp  
(205) 478-4974**

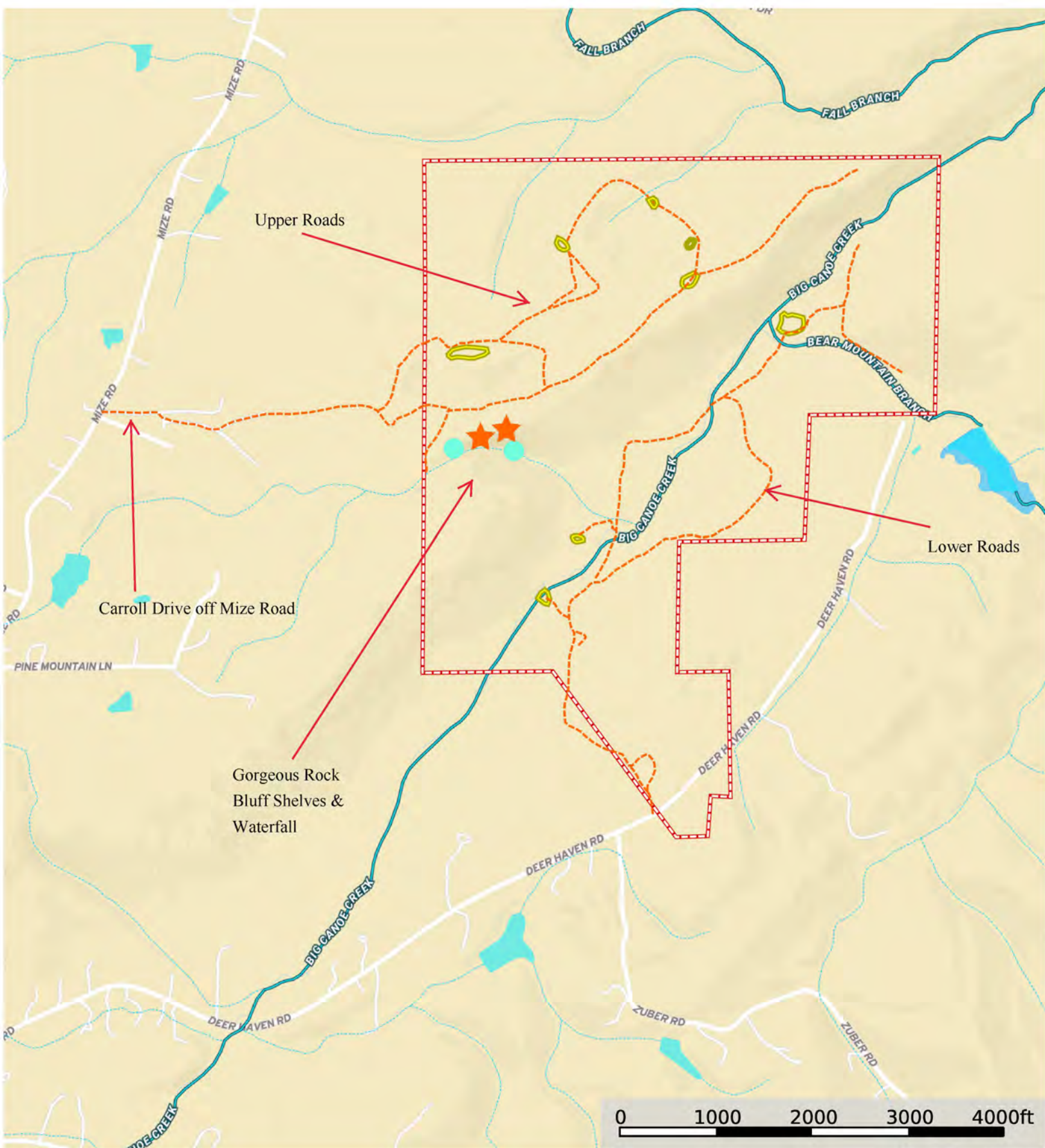


**AlabamaLandAgent.com**

**Land • Farms • Lake Property**







- Five Miles of Trails
- 7,000+/- Ft. on Big Canoe Creek
- 2,000+/- on Bear Brush Branch
- 7 Green Fields
- Waterfall and Rock Bluffs
- Multiple Cabin Sites



