

**TURKEY HAVEN RANCH
WITH LEASED
FARMLAND
3,840 +/- Acres
Hendry County, FL
\$21,000,000**

NEW LISTING

**NATIONAL
LAND
REALTY®**



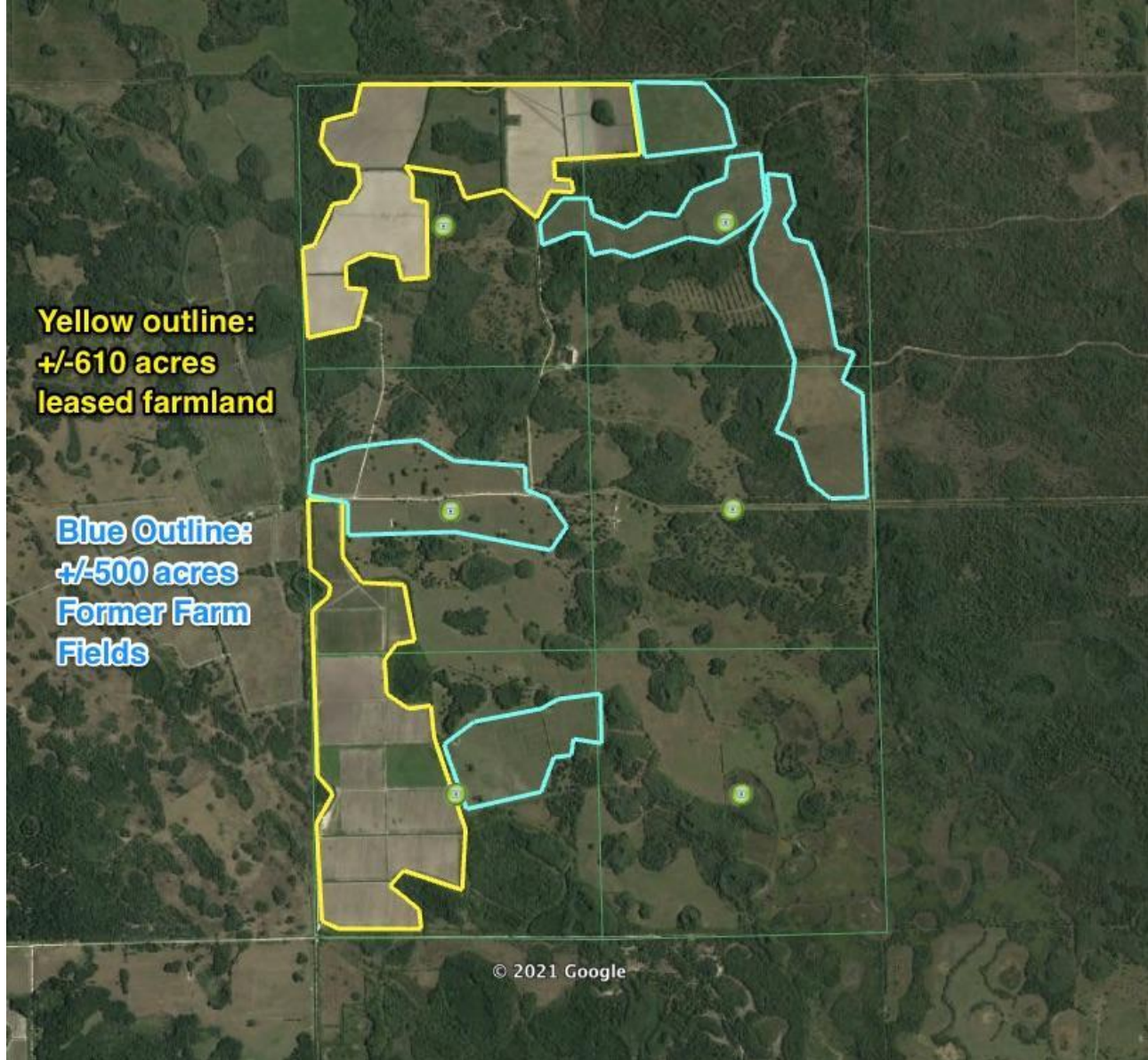
**NATIONAL
LAND
REALTY®**

National Land Realty
141 5th Street NW
Suite 202
Winter Haven, FL 33881
www.NationalLand.com



Trevor C. Williams, MA
Office: 863.293.5600
Cell: 863.289.7222
Fax: 864.331.1610
twilliams@nationalland.com

The information herein is from sources deemed reliable, however the accuracy is not guaranteed.
National Land Realty assumes no liability for error, omissions or investment results.



OVERVIEW:

Offered for sale is this incredibly diverse farm, ranch, and hunting investment just one hour due east of Naples. The Turkey Haven Ranch and Farm is a total of six contiguous sections (3,840 acres) of land located southeast of Immokalee in Hendry County. At this time, +/-610 acres of farm fields are under lease to a vegetable grower. In addition to the leased farmland income, the property is an excellent cattle ranch, and a world-class hunting location, known for Osceola Turkey and White-tail Deer. SELLER IS WILLING TO PARTITION THE PROPERTY, OFFERING +/-3,000 acres OF RANCH/HUNTING ACREAGE FOR \$15,000,000.

ADDRESS:

Shoults Grade Rd.
Clewiston, FL 33440

LOCATION:

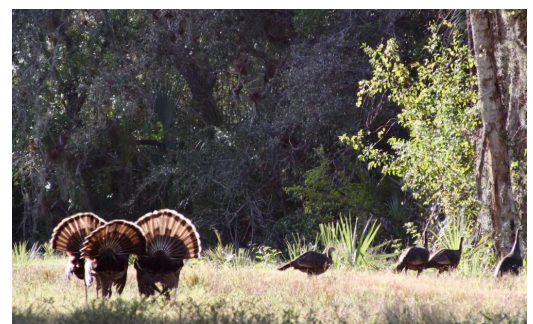
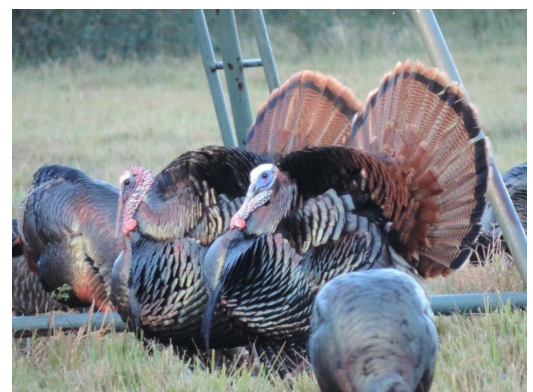
Located just under one hour east of Naples. East of Hwy 29, south of downtown Immokalee.

ACREAGE BREAKDOWN:

+/- 610 acres leased active farmland, +/-500 acres fallow farmland, +/-1,910 pasture, +/-820 acres wooded native land

TAXES:

(Call Agent for Details)



PROPERTY HIGHLIGHTS:

- OFFERED WITH OR WITHOUT FARMLAND;
\$15,000,000 FOR +/-3,000 acres RANCH LAND.
- World-class Osceola Turkey hunting
- Excellent cattle ranch
- Permitted large farming wells
- Good road system
- One hour from Naples
- Picturesque "Old Florida" flora and fauna
- +/-610 acres currently leased for farming
- +/-500 additional acres of farmable fields ready for use

LEGAL DESCRIPTION:

TBD by survey

VIEW FULL LISTING:

www.nationalland.com/viewlisting.php?listingid=2091131





National Land Realty
 141 5th Street NW
 Suite 202
 Winter Haven, FL 33881
www.NationalLand.com



Trevor C. Williams, MA
 Office: 863.293.5600
 Cell: 863.289.7222
 Fax: 864.331.1610
twilliams@nationalland.com