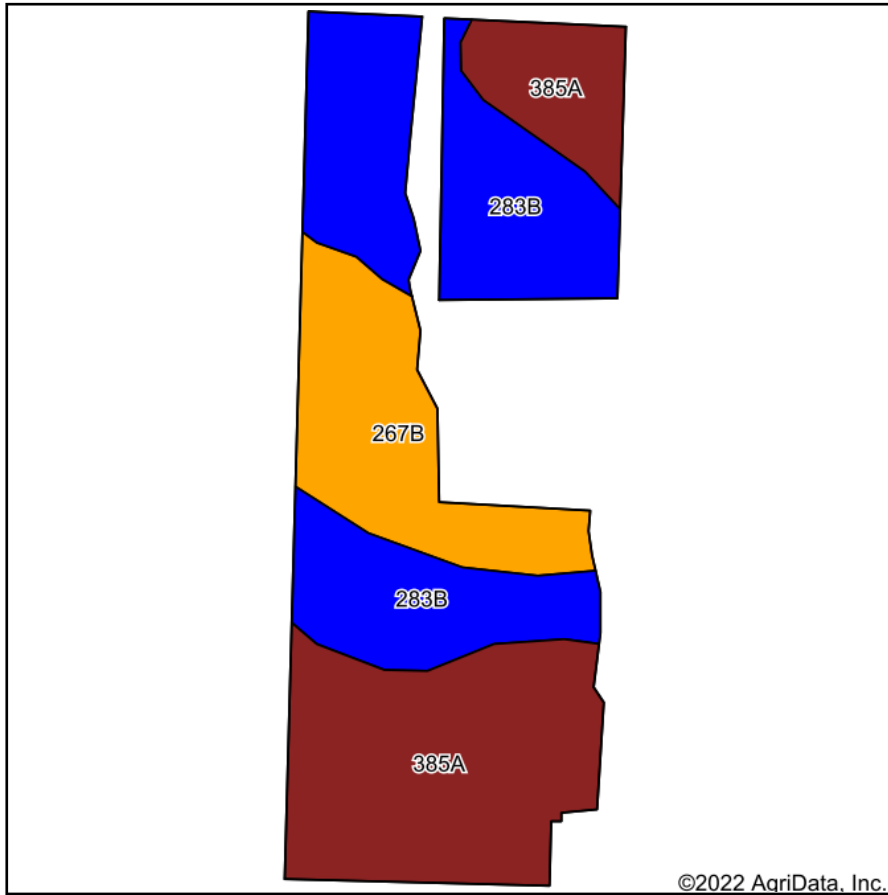
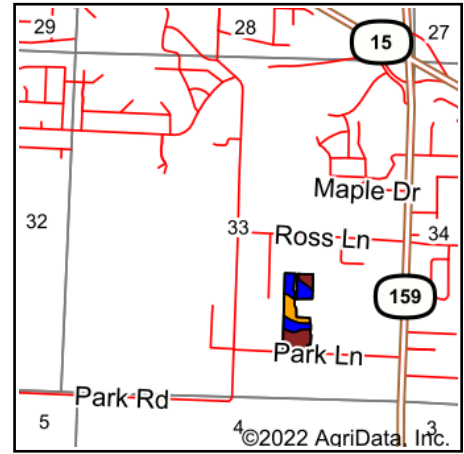


# Soils Map



Soils data provided by USDA and NRCS.



State: **Illinois**  
 County: **St. Clair**  
 Location: **33-1N-8W**  
 Township: **Belleville**  
 Acres: **9.84**  
 Date: **4/8/2022**



Maps Provided By:  
  
 CUSTOMIZED ONLINE MAPPING  
 © AgriData, Inc. 2021 www.AgriDataInc.com



Area Symbol: IL163, Soil Area Version: 13									
Code	Soil Description	Acres	Percent of field	Il. State Productivity Index Legend	Corn Bu/A	Soybeans Bu/A	Wheat Bu/A	Alfalfa <sup>d</sup> hay, T/A	Crop productivity index for optimum management
**283B	Downsouth silt loam, 2 to 5 percent slopes	3.96	40.2%		**182	**56	**69	**6.34	**135
385A	Mascoutah silty clay loam, 0 to 2 percent slopes	3.91	39.7%		194	61	71	0.00	141
**267B	Caseyville silt loam, 2 to 5 percent slopes	1.97	20.0%		**169	**51	**64	0.00	**125
<b>Weighted Average</b>					<b>184.2</b>	<b>57</b>	<b>68.8</b>	<b>2.55</b>	<b>135.4</b>

**Table: Optimum Crop Productivity Ratings for Illinois Soil by K.R. Olson and J.M. Lang, Office of Research, ACES, University of Illinois at Champaign-Urbana.** Version: 1/2/2012 Amended Table S2 B811

Crop yields and productivity indices for optimum management (B811) are maintained at the following NRES web site: <http://soilproductivity.nres.illinois.edu/>

\*\* Indexes adjusted for slope and erosion according to Bulletin 811 Table S3

<sup>d</sup> Soils in the poorly drained group were not rated for alfalfa and are shown with a zero "0".

Soils data provided by USDA and NRCS. Soils data provided by University of Illinois at Champaign-Urbana.