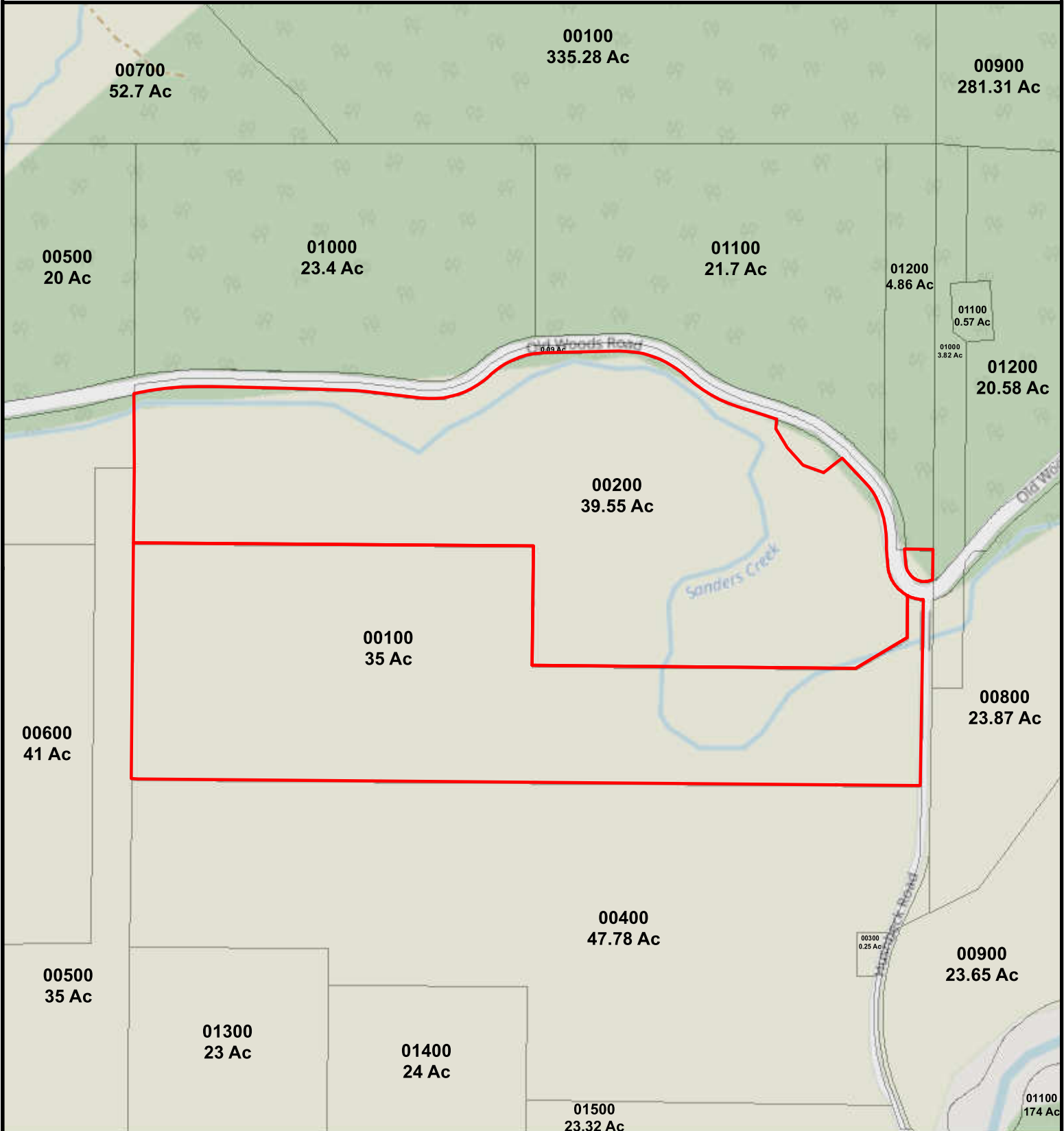




First American Title

4S10290000100,4S10290000200
35100 Learned Rd
Cloverdale, OR 97112



Taxlot



Subject



Taxlot

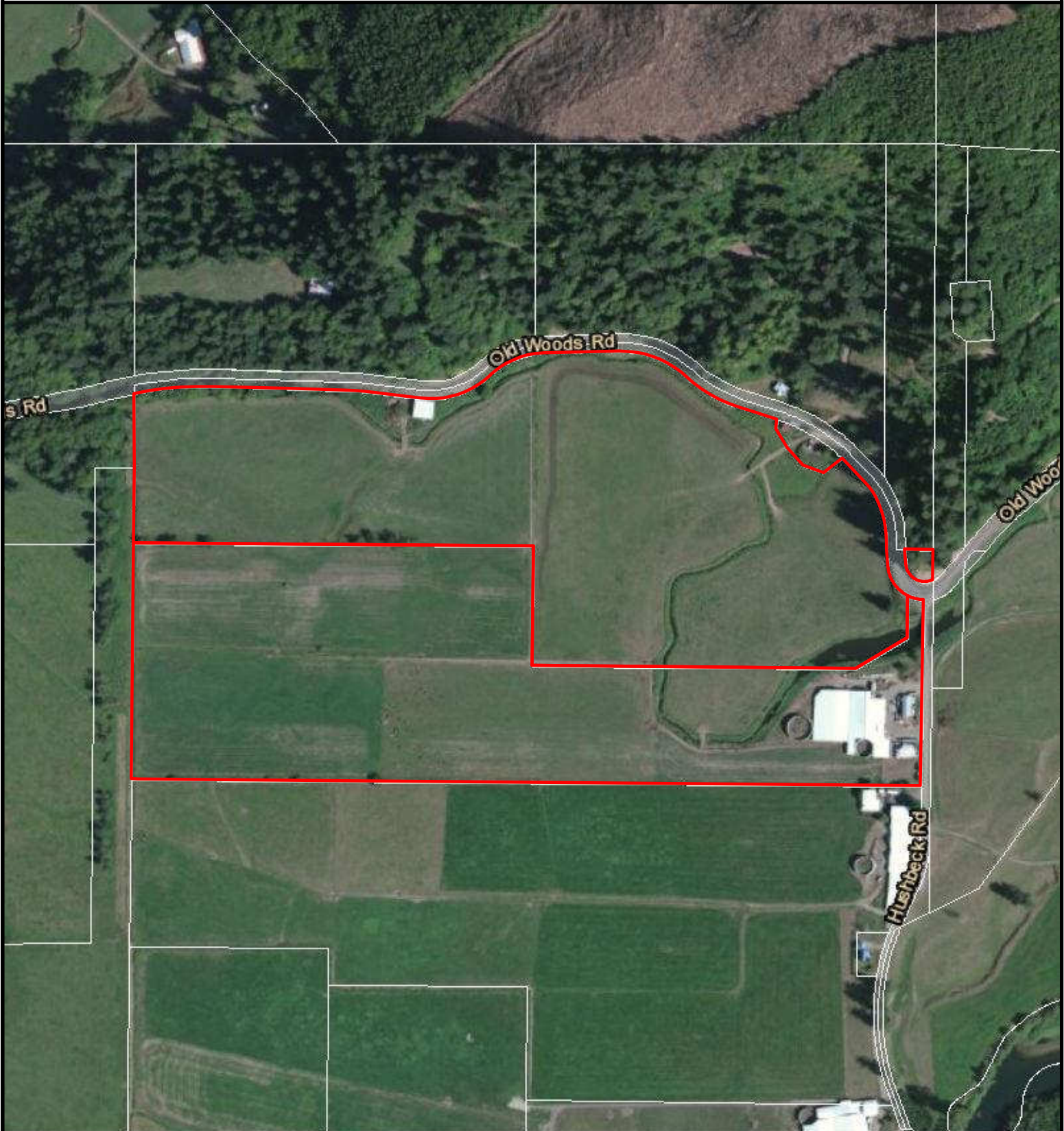
4/21/2022

First American Title Insurance Company makes no express or implied warranty respecting the Information presented and assumes no responsibility for errors or omissions. FIRST AMERICAN, the Eagle logo, and FIRST AMERICAN TITLE INSURANCE COMPANY are trademarks owned by First American Financial Corporation. Information is provided by Home Junction. <https://www.homejunction.com/> School information is copyrighted and provided by GreatSchools.org. <https://www.greatschools.org>



First American Title

4S10290000100,4S10290000200
35100 Learned Rd
Cloverdale, OR 97112



Aerial



Subject



Taxlot

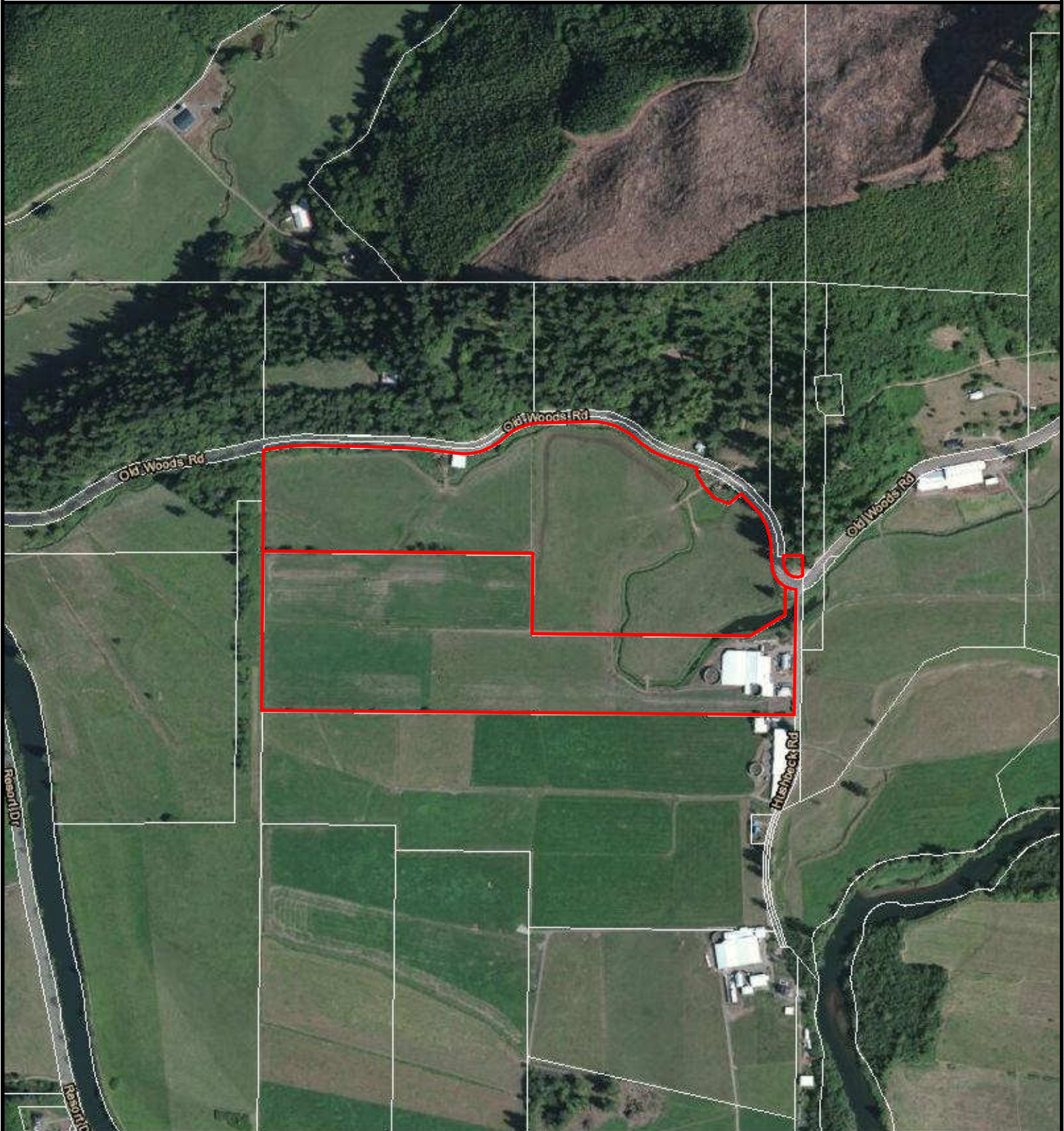
4/21/2022

First American Title Insurance Company makes no express or implied warranty respecting the Information presented and assumes no responsibility for errors or omissions. FIRST AMERICAN, the Eagle logo, and FIRST AMERICAN TITLE INSURANCE COMPANY are trademarks owned by First American Financial Corporation. Information is provided by Home Junction. <https://www.homejunction.com/> School information is copyrighted and provided by GreatSchools.org. <https://www.greatschools.org>



First American Title

4S10290000100,4S10290000200
35100 Learned Rd
Cloverdale, OR 97112



Aerial



Subject



Taxlot

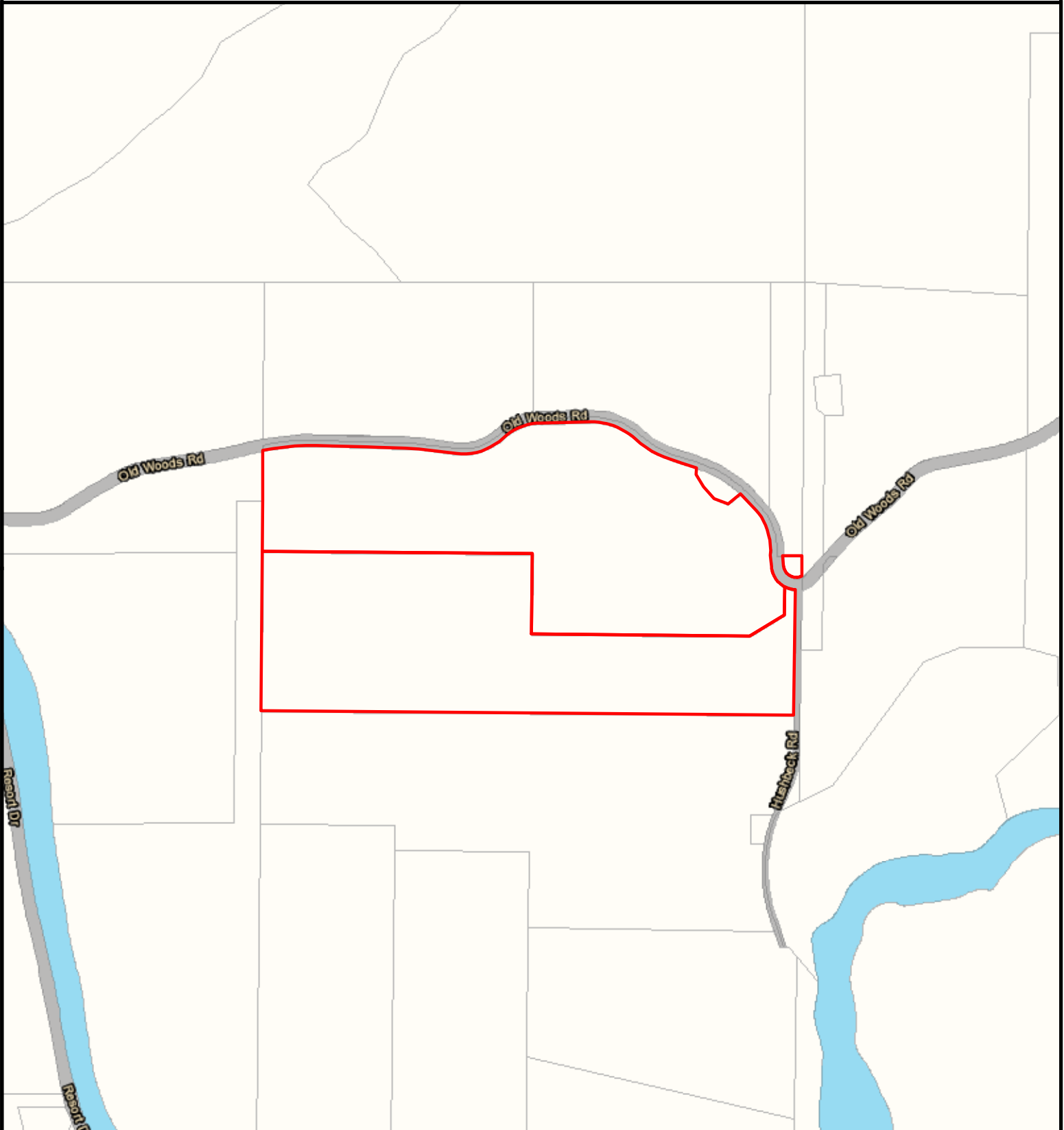
4/21/2022

First American Title Insurance Company makes no express or implied warranty respecting the information presented and assumes no responsibility for errors or omissions. FIRST AMERICAN, the Eagle logo, and FIRST AMERICAN TITLE INSURANCE COMPANY are trademarks owned by First American Financial Corporation. Information is provided by Home Junction. <https://www.homejunction.com/> School information is copyrighted and provided by GreatSchools.org. <https://www.greatschools.org>



First American Title

4S10290000100,4S10290000200
35100 Learned Rd
Cloverdale, OR 97112



Community



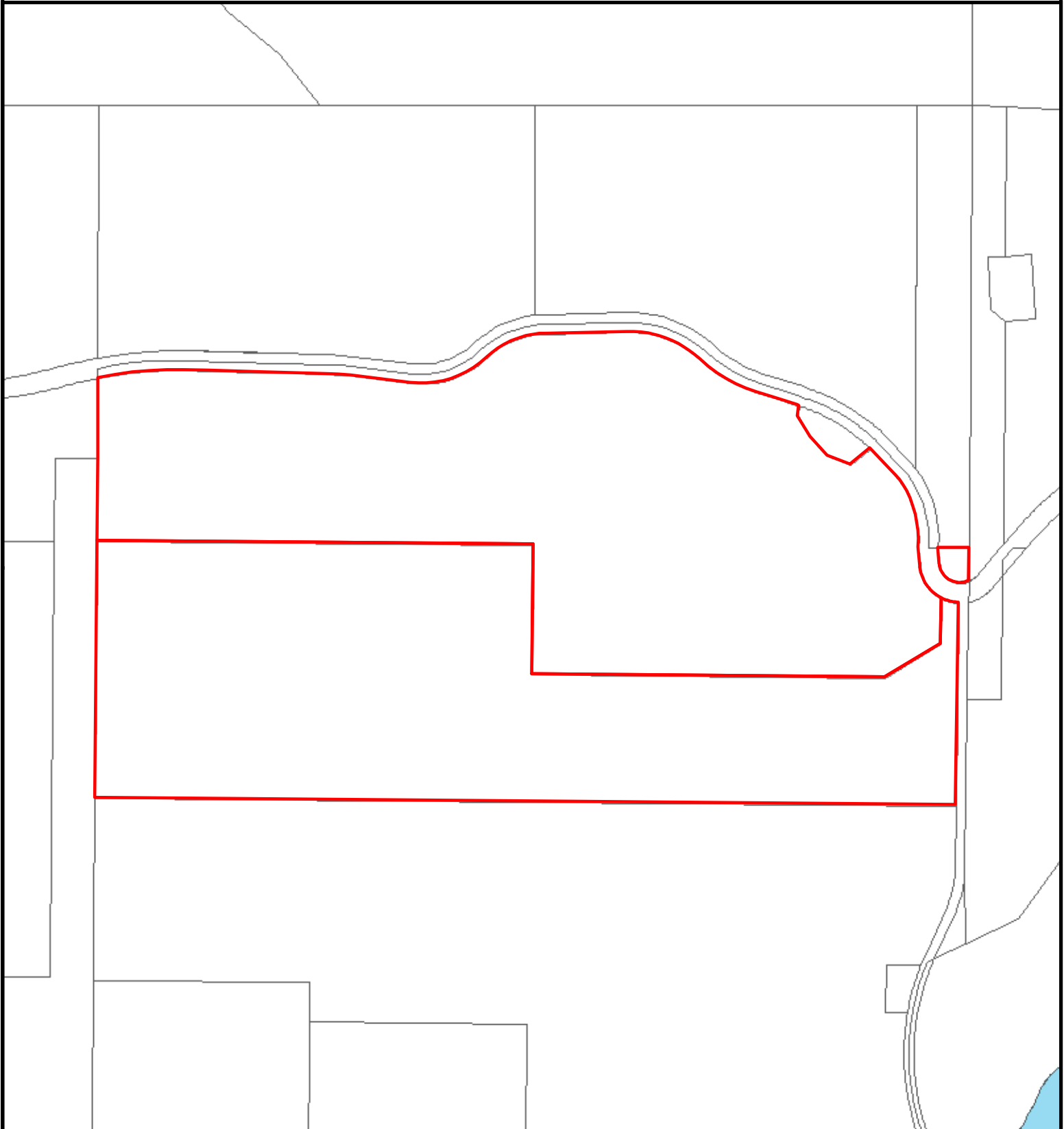
4/21/2022

First American Title Insurance Company makes no express or implied warranty respecting the information presented and assumes no responsibility for errors or omissions. FIRST AMERICAN, the Eagle logo, and FIRST AMERICAN TITLE INSURANCE COMPANY are trademarks owned by First American Financial Corporation. Information is provided by Home Junction. <https://www.homejunction.com/> School information is copyrighted and provided by GreatSchools.org. <https://www.greatschools.org>



First American Title

4S10290000100,4S10290000200
35100 Learned Rd
Cloverdale, OR 97112



Zoning



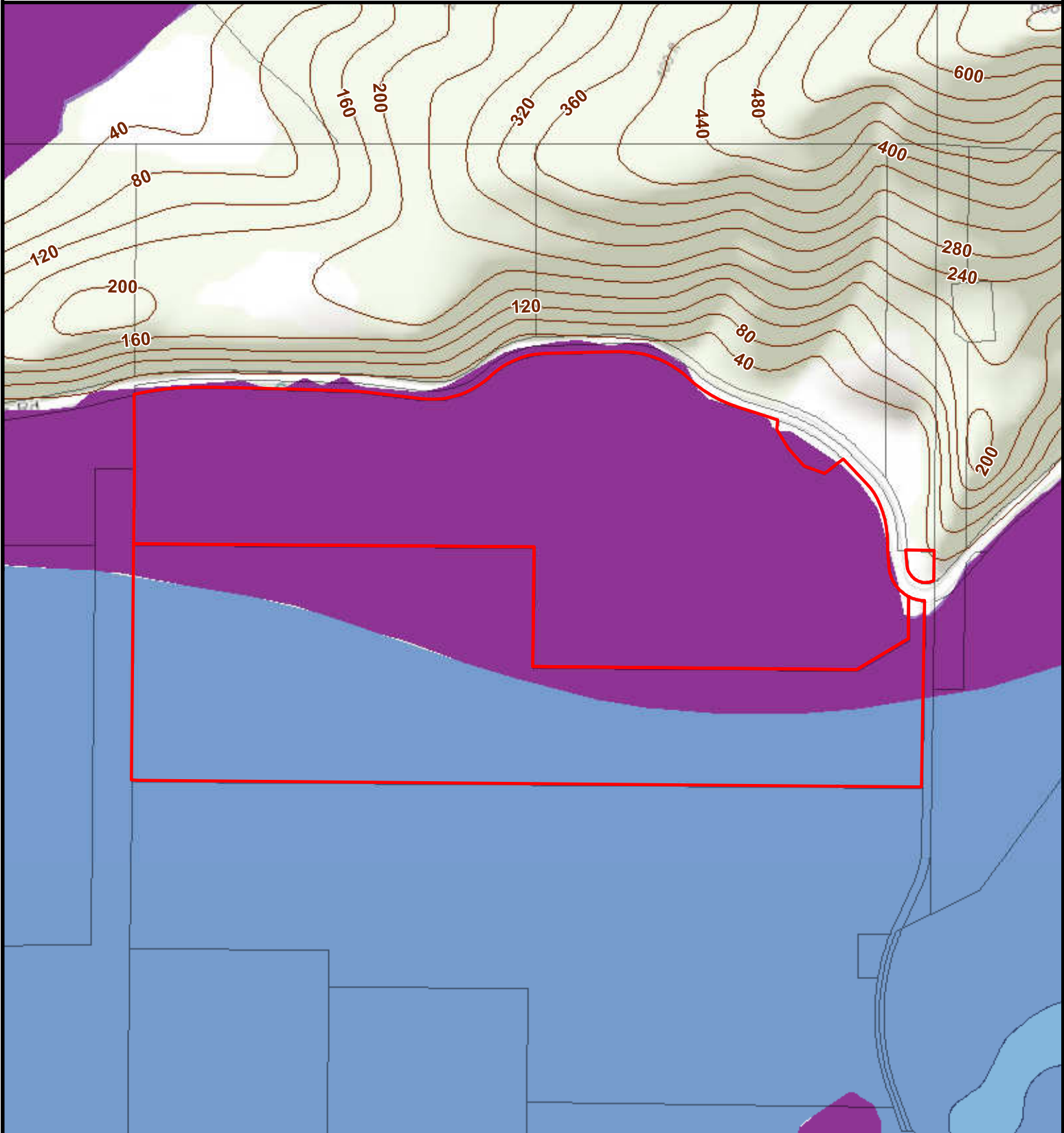
Subject



Taxlot

4/21/2022

First American Title Insurance Company makes no express or implied warranty respecting the Information presented and assumes no responsibility for errors or omissions. FIRST AMERICAN, the Eagle logo, and FIRST AMERICAN TITLE INSURANCE COMPANY are trademarks owned by First American Financial Corporation. Information is provided by Home Junction. <https://www.homejunction.com/> School information is copyrighted and provided by GreatSchools.org. <https://www.greatschools.org>

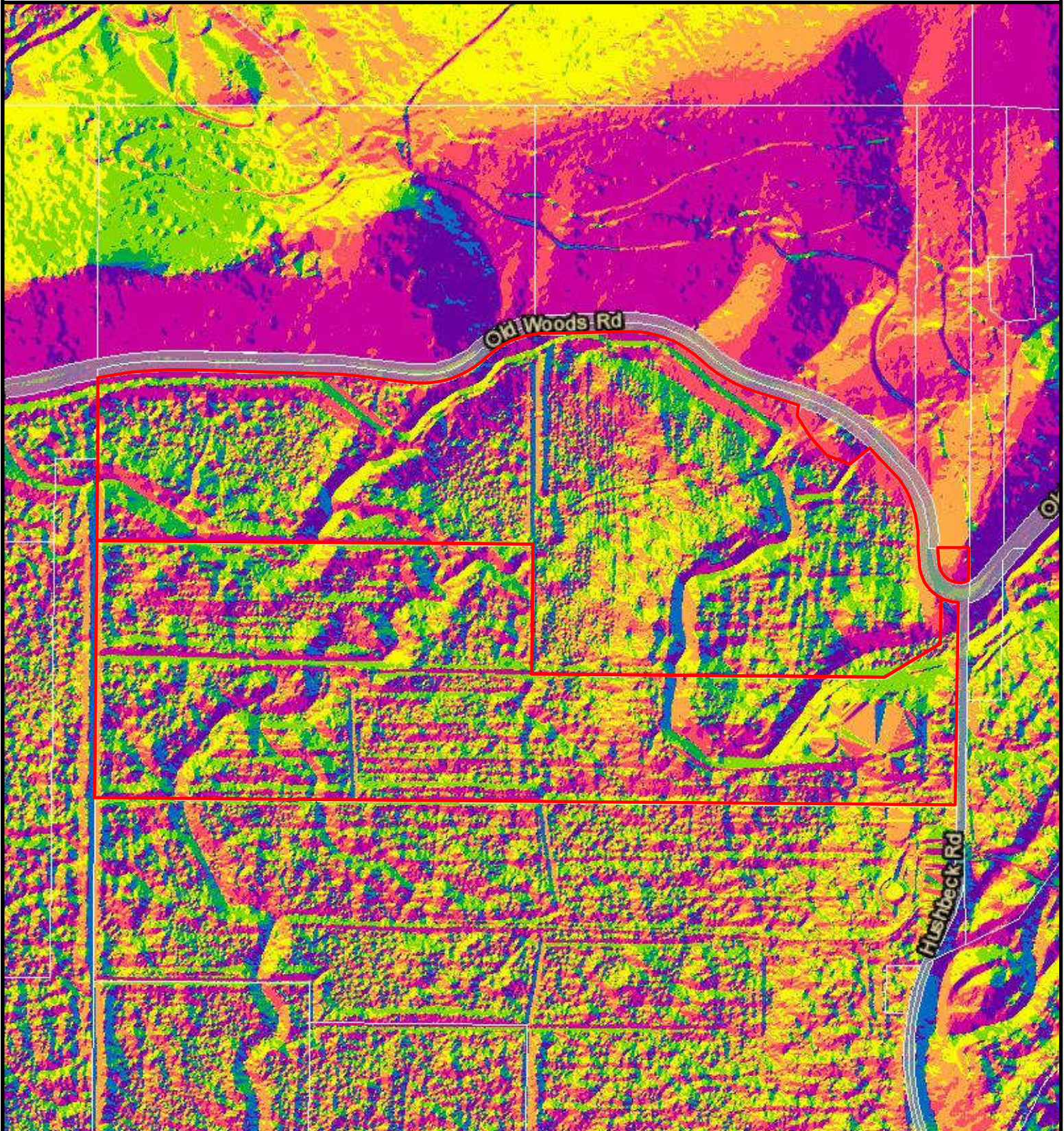


Natural Features

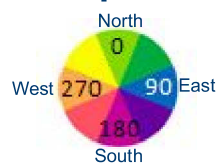
- Contour
- 1% Annual Chance Flood
- 0.2% Annual Chance Flood
- Special Floodway
- Wetlands
- Area of Undetermined Flood
- Regulatory Floodway
- Area with Reduced Risk Due to Levee
- Future Conditions 1% Annual Chance Flood Hazard

4/21/2022

First American Title Insurance Company makes no express or implied warranty respecting the information presented and assumes no responsibility for errors or omissions. FIRST AMERICAN, the Eagle logo, and FIRST AMERICAN TITLE INSURANCE COMPANY are trademarks owned by First American Financial Corporation. Information is provided by Home Junction. <https://www.homejunction.com/> School information is copyrighted and provided by GreatSchools.org. <https://www.greatschools.org>



Aspect





First American Title

4S10290000100,4S10290000200
35100 Learned Rd
Cloverdale, OR 97112

Nestucca-Brenner silt
loams, 0 to 3 percent slopes
77A

Klootchie-Necanicum complex, 30
to 60 percent slopes
20E

Necanicum-Ascar-Klootchie
complex, 60 to 90 percent slopes
21F

Old Woods Rd

Klootchie-Necanicum
complex, 30 to 60 percent slopes
20E

Brenner silt loam, 0
to 1 percent slopes
1A

Nehalem silt loam, 0
to 3 percent slopes
74A

Hushbeck Rd

Nestucca-Brenner silt loams,
0 to 3 percent slopes
77A

Nehalem silt loam, 0
to 3 percent slopes
74A

Soil



Subject



Taxlot

4/21/2022

First American Title Insurance Company makes no express or implied warranty respecting the information presented and assumes no responsibility for errors or omissions. FIRST AMERICAN, the Eagle logo, and FIRST AMERICAN TITLE INSURANCE COMPANY are trademarks owned by First American Financial Corporation. Information is provided by Home Junction. <https://www.homejunction.com/> School information is copyrighted and provided by GreatSchools.org. <https://www.greatschools.org>