



**T R O P H Y**  
PROPERTIES AND AUCTION  
LAND | RECREATIONAL | RESIDENTIAL

# 186 +/- Acre Missouri Duck Club & Home for Sale - Pike County

www.TrophyPA.com • (855) 573-5263 • leads@trophy.com

**PRICE IMPROVED**



**PROPERTY ADDRESS:**

8750 County Road 118  
Louisiana, MO 63353

**PRICE:** \$1,946,500

**ACRES:** 186

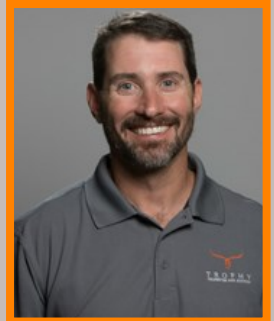
**COUNTY:** Pike

**PROPERTY HIGHLIGHTS:**

- 173± Acres of Bottomland for Waterfowl Hunting
- Pumps and Blinds installed on the property
- 5000+ sq ft house
- Incredible views of the Salt River!

**PROPERTY DESCRIPTION:**

With 173 acres of bottomland and a 5000+ sq ft house, this property is perfect for the waterfowl hunter that wants to own their own duck club! The house could easily sleep 12+ people and it has amazing views as it sits on a bluff overlooking the Salt River. Just a short drive from the house is the 173 acres of waterfowl hunting, with pumps and blinds already installed, this place is ready to be your dream duck club.



**PRESENTED BY:**

**JASON CLEVELAND**

**Broker/Partner**

M: (636) 751-4579

P: (855) 573-5263 x702

E: jcleveland@trophy.com

**Trophy Properties and Auction**

15480 Clayton Road

Suite 101

Ballwin, MO 63011

www.Trophy.com

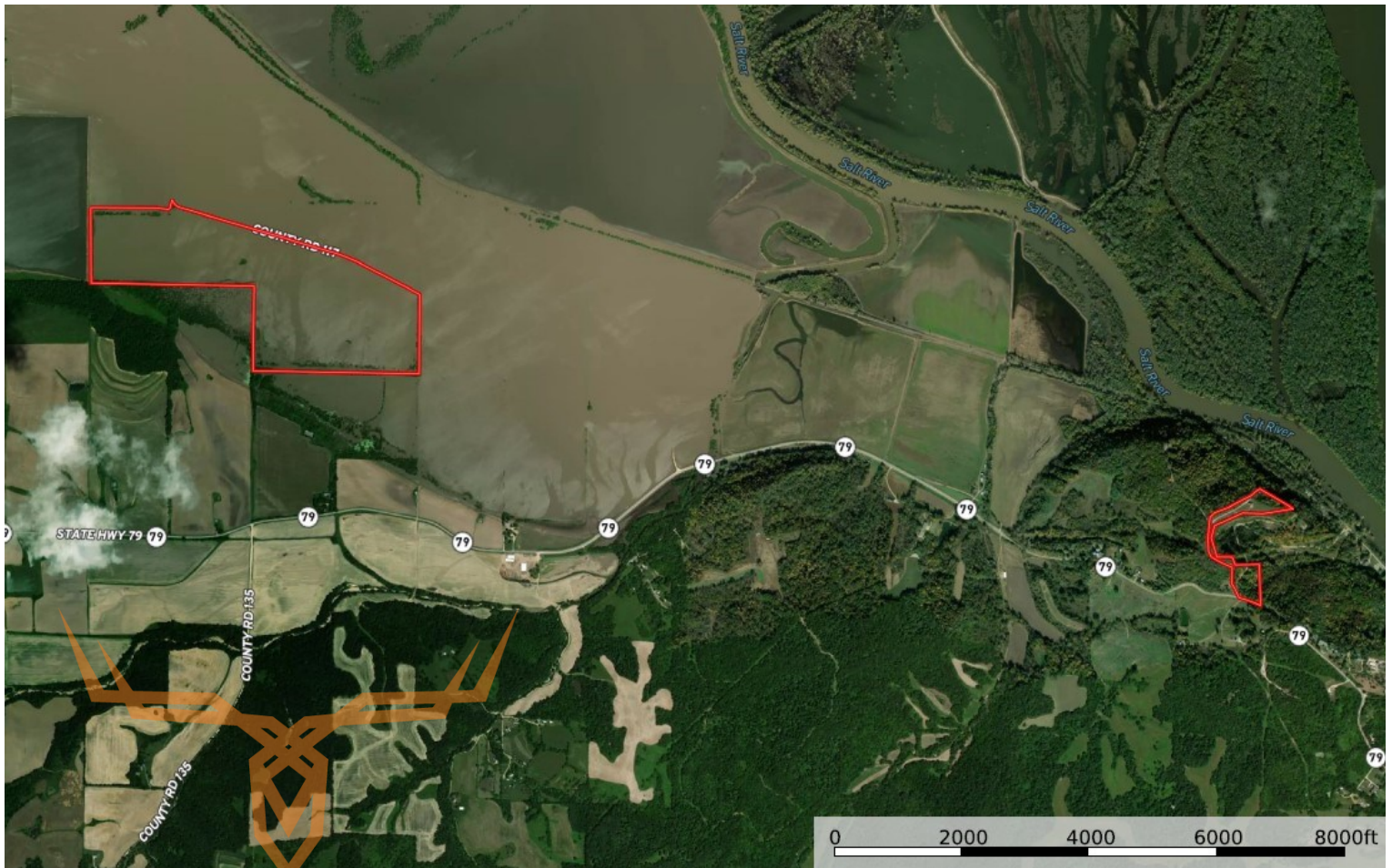
leads@trophy.com



**T R O P H Y**  
PROPERTIES AND AUCTION  
LAND | RECREATIONAL | RESIDENTIAL

# 186 +/- Acre Missouri Duck Club & Home for Sale - Pike County

[www.TrophyPA.com](http://www.TrophyPA.com) • (855) 573-5263 • [leads@trophyPA.com](mailto:leads@trophyPA.com)



Broker does not guarantee the accuracy of sq. ft., lot size, or other information, buyer is advised to independently verify the accuracy of information through personal inspection and with appropriate professionals