

STIMSON WEST RANCH

FOR SALE

627 Acres

Bradley, CA
Monterey County

\$650,000

Monterey Ranch Land For Sale. 627 +/- ac. of mixed terrain ranch land for sale in southern Monterey County. Property contains 2 tax parcels along Jolon Road. Ranch has been operated as a spring feeder ranch as conditions permit. Included are a set of old corrals in poor condition, a stock well/pump. There are several building sites available along Jolon Road. Property contains excellent hunting habitat with populations of deer, pig, quail and dove and is adjacent to an additional 400 acres of BLM land.

TRI Outdoor Properties

LAND BROKERAGE / Recreational · Agricultural · Conservation

A Division of TRI Commercial Real Estate

Building Great Relationships Between People and the Outdoors

SERVING
NORTHERN & CENTRAL
CALIFORNIA

STIMSON WEST RANCH



Operated as a spring feeder ranch, included are a set of old corrals in poor condition, a stock well/pump.



TRI *Outdoor Properties*

LAND BROKERAGE / Recreational · Agricultural · Conservation

A Division of TRI Commercial Real Estate

Building Great Relationships Between People and the Outdoors

SERVING
NORTHERN & CENTRAL
CALIFORNIA

STIMSON WEST RANCH

Jolon Road
Bradley, CA 93426

APN: 423-071-030; 423-071-055;

Acres: 627

Elevation Minimum/Maximum:
1,100 Feet - 1,700 Feet

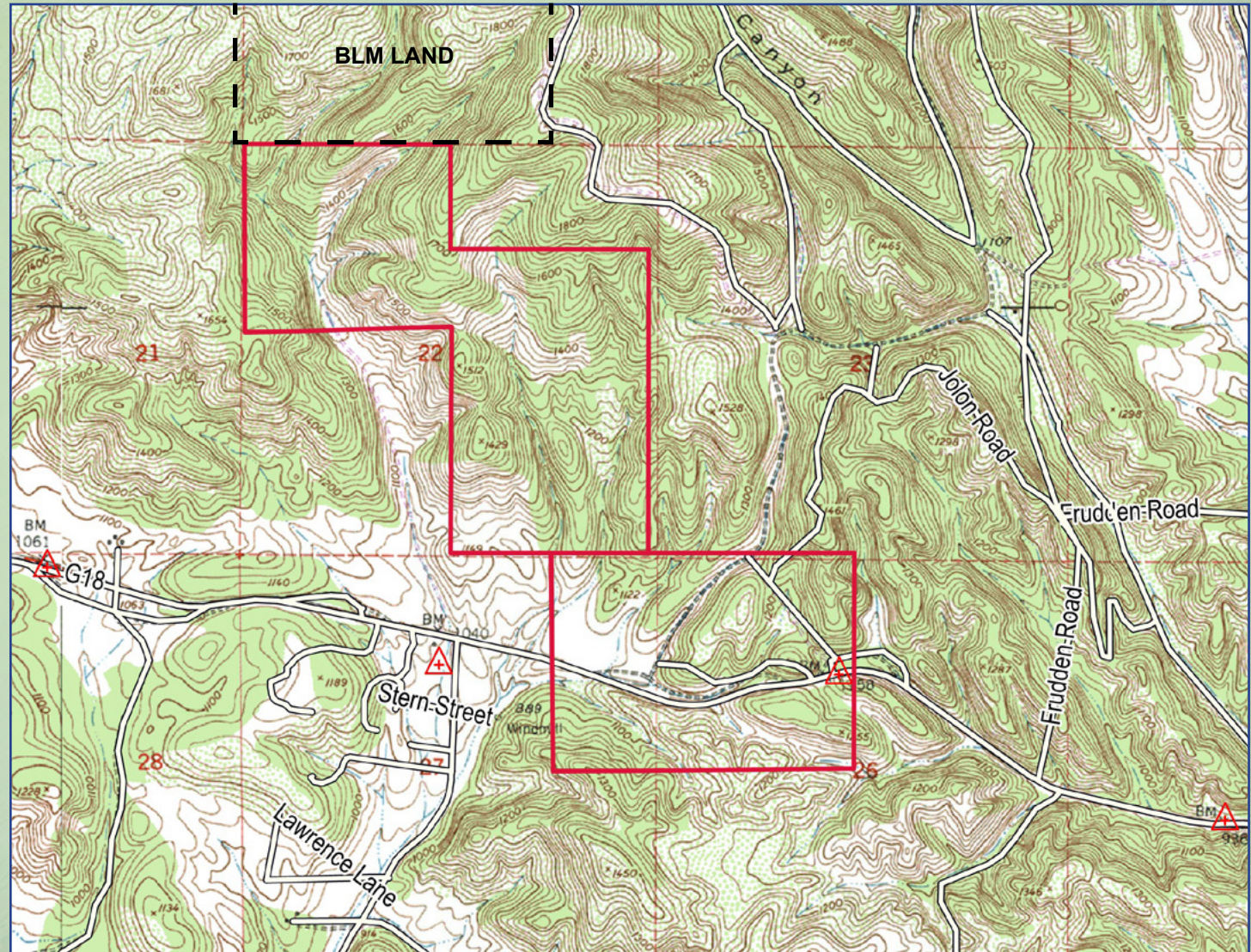
Latitude: 35.90345
Longitude: -120.9757

Zoning: RG 160

Price: \$650,000

Terms: Cash or submit terms.

Amenities: Mixed Use Property,
Adjacent to 400 acres of BLM Land;
easy access; fenced for grazing;
domestic well with pump; electricity
to site; good hunting and recreation
property.



TRI Outdoor Properties

LAND BROKERAGE / Recreational · Agricultural · Conservation

A Division of TRI Commercial Real Estate

Building Great Relationships Between People and the Outdoors

SERVING
NORTHERN & CENTRAL
CALIFORNIA

STIMSON WEST RANCH

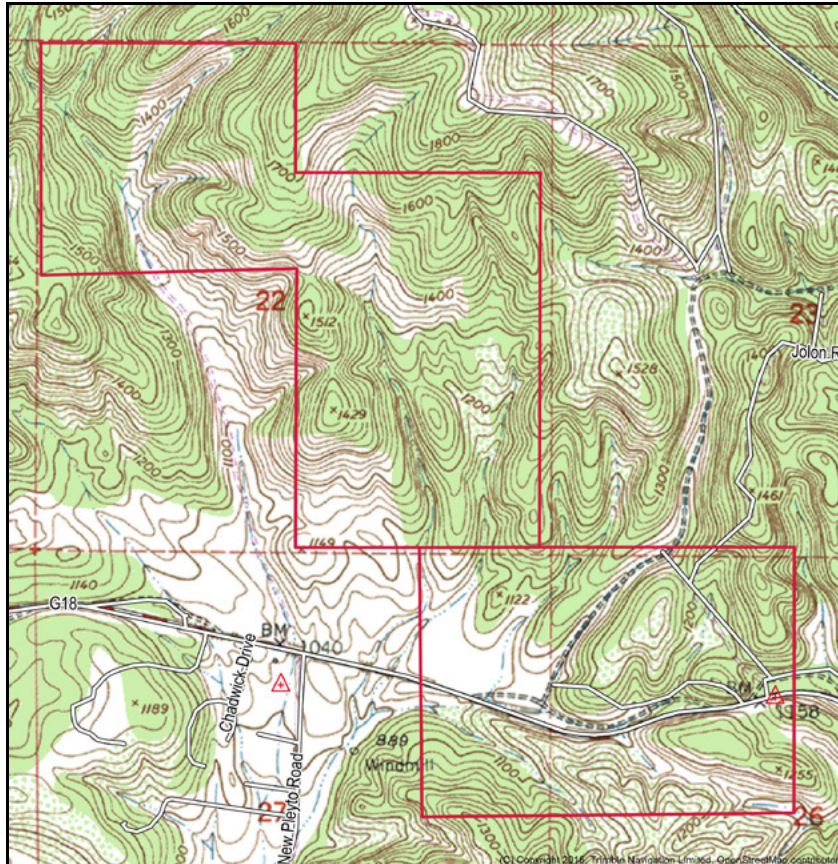
Monterey County

TRI Outdoor Properties

627 Ac / Monterey County
Exclusive Listing
\$650,000

LAND BROKERAGE | Recreational · Agricultural · Conservation
A Division of TRI Commercial Real Estate Services, Inc.

TRI Outdoor Properties
Office: 866-761-7930
Cell: 916-233-8416
mkupp@tricommercial.com



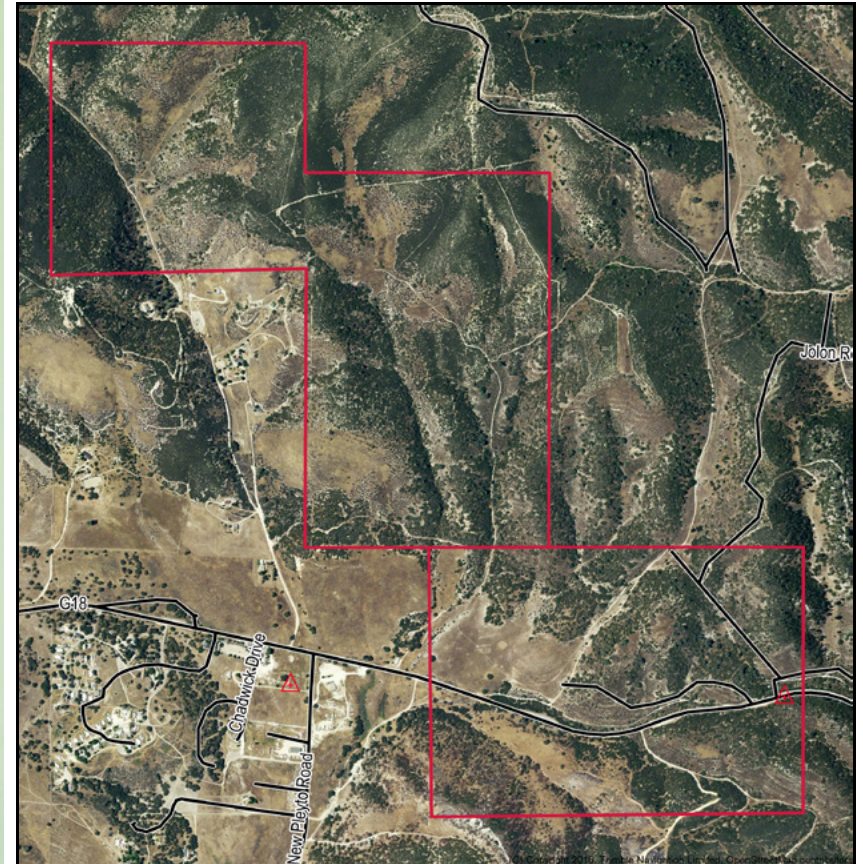
DISCLAIMER: The information contained herein is as obtained by this broker from sellers, owners, or other sources. This information is considered reliable, neither this broker nor owners make any guarantee, warranty or representation as to correctness of any data or descriptions and the accuracy of such statements. The correctness and / or accuracy of any and all statements should be determined through independent investigation made by the prospective purchaser. Any offer for sale is subject to prior sale, errors and omissions, change of price, terms or other conditions or withdrawal from sale in whole or in part, by seller without notice and at the sole discretion of seller. Readers are urged to form their own independent conclusions and evaluations in consultation with legal counsel, accountants, and/or investment advisors concerning all material contained herein.

TRI Outdoor Properties

627 Ac / Monterey County
Exclusive Listing
\$650,000

LAND BROKERAGE | Recreational · Agricultural · Conservation
A Division of TRI Commercial Real Estate Services, Inc.

TRI Outdoor Properties
Office: 866-761-7930
Cell: 916-233-8416
mkupp@tricommercial.com



DISCLAIMER: The information contained herein is as obtained by this broker from sellers, owners, or other sources. This information is considered reliable, neither this broker nor owners make any guarantee, warranty or representation as to correctness of any data or descriptions and the accuracy of such statements. The correctness and / or accuracy of any and all statements should be determined through independent investigation made by the prospective purchaser. Any offer for sale is subject to prior sale, errors and omissions, change of price, terms or other conditions or withdrawal from sale in whole or in part, by seller without notice and at the sole discretion of seller. Readers are urged to form their own independent conclusions and evaluations in consultation with legal counsel, accountants, and/or investment advisors concerning all material contained herein.

TRI Outdoor Properties

LAND BROKERAGE / Recreational · Agricultural · Conservation
A Division of TRI Commercial Real Estate

Building Great Relationships Between People and the Outdoors

SERVING
NORTHERN & CENTRAL
CALIFORNIA

06 423 07

05

04

SCALE: 1 IN = 30 CHAINS
1 IN = 1980 FT

PLEYTO

LAGUNA

SAN ANTONIO RESERVOIR

219-01

424-06

T. 24 S. R. 9 E.

21

27

26

25

24

23

22

21

20

19

18

17

16

15

14

13

12

11

10

9

8

7

6

5

4

3

2

1

0

153 AC

150 AC

79 AC

120 AC

40 AC

193.66 AC

37.81 AC

101.25 AC

102

100

101

103

104

105

106

107

108

109

110

111

112

113

114

115

116

117

118

119

120

121

122

123

124

125

126

127

128

129

130

131

132

133

134

135

136

137

138

139

140

141

142

143

144

145

146

147

148

149

150

151

152

153

154

155

156

157

158

159

160

161

162

163

164

165

166

167

168

169

170

171

172

173

174

175

176

177

178

179

180

181

182

183

184

185

186

187

188

189

190

191

192

193

194

195

196

197

198

199

200

201

202

203

204

205

206

207

208

209

210

211

212

213

214

215

216

217

218

219

220

221

222

223

224

225

226

227

228

229

230

231

232

233

234

235

236

237

238

239

240

241

242

243

244

245

246

247

248

249

250

251

252

253

254

255

256

257

258

259

260

261

262

263

264

265

266

267

268

269

270

271

272

273

274

275

276

277

278

279

280

281

282

283

284

285

286

287

288

289

290

291

292

293

294

295

296

297

298

299

300

301

302

303

304

305

306

307

308

309

310

311

312

313

314

315

316

317

318

319

320

321

322

323

324

325

326

327

328

329

330

331

332

333

334

335

336

337

338

339

340

341

342

343

344

345

346

347

348

349

350

351

352

353

354

355

356

357

358

359

360

361

362

363

364

365

366

367

368

369

370

371

372

373

374

375

376

377

378

379

380

381

382

383

384

385

386

387

388

389

390

391

392

393

394

395

396

397

398

399

400

401

402

403

404

405

406

407

408

409

410

411

412

413

414

415

416

417

418

419

420

421

422

423

424

425

426

427

428

429

430

431

432

433

434

435

436

437

438

439

440

441

442

443

444

445

446

447

448

449

450

451

452

453

454

455

456

457

458

459

460

461

462

463

464

465

466

467

468

469

470

471

472

473

474

475

476

477

478

479

480

481

482

483

484

485

486

487

488

489

490

491

492

493

Building Great Relationships Between People and the Outdoors



**SERVING
NORTHERN & CENTRAL
CALIFORNIA**

STIMSON WEST RANCH

Monterey County

TRI *Outdoor Properties*

LAND BROKERAGE | Recreational · Agricultural · Conservation
A Division of TRI Commercial Real Estate Services, Inc.

Contact:

Mike Kuppenbender, SIOR, CCIM, ALC
BRE: 00811112

Olen Zirkle, ALC
BRE: 01190000

Tel: 866.761.7930

Fax: 916.677.8199

3400 Douglass Blvd, Suite 190
Roseville, CA 95661

www.trioutdoorproperties.com



TRI *Outdoor Properties*

LAND BROKERAGE / Recreational · Agricultural · Conservation

A Division of TRI Commercial Real Estate

Building Great Relationships Between People and the Outdoors

SERVING
NORTHERN & CENTRAL
CALIFORNIA